

breezeYachting.swiss



2006/2021 Posillipo Technema 95 'ELVI'

from 55'000 EUR p/week | 23m | Greece

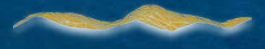
Introducing ELVI, a fantastic yacht for sun-soaked charters in Greece, boasting a proven record of positive reviews.

Crewed by highly experienced professionals with extensive knowledge of the best charter itineraries throughout the Greek islands and their secluded turquoise bays, ELVI ensures an exceptional voyage at 100%.

ELVI boasts a spacious aft swimming platform, providing easy access to the water, as well as a unique array of water toys, offering endless opportunities for adventure and recreation for guests of all ages and preferences.

The yacht's ample exterior deck spaces offer versatility and flexibility, ideal for alfresco dining, socializing, or simply basking in the sun while taking in breathtaking views of the surrounding vistas.

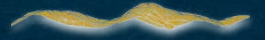
This yacht is perfect for a luxury vacation under the Greek sun, offering more than everything a guest could wish for.



KEY POINTS

- Full-beam master cabin on main deck
- Large aft swimming platform
- Versatile interior layout
- Vast variety of water toys
- Variety of ample exterior deck spaces









WATER TOYS

- Tender 4.50m with Outboard engine 70 HP
- 1 x Jet Ski SEA DOO GTI 1500cc 2019
- 3 x Seabob F5s
- 2 x Water ski (1 for adults – 1 for kids)
- 1 x Wakeboard
- 1 x Kayak
- 1 x SUP
- 2 x Tubes
- Water sofa 3-seater
- Snorkeling & fishing equipment





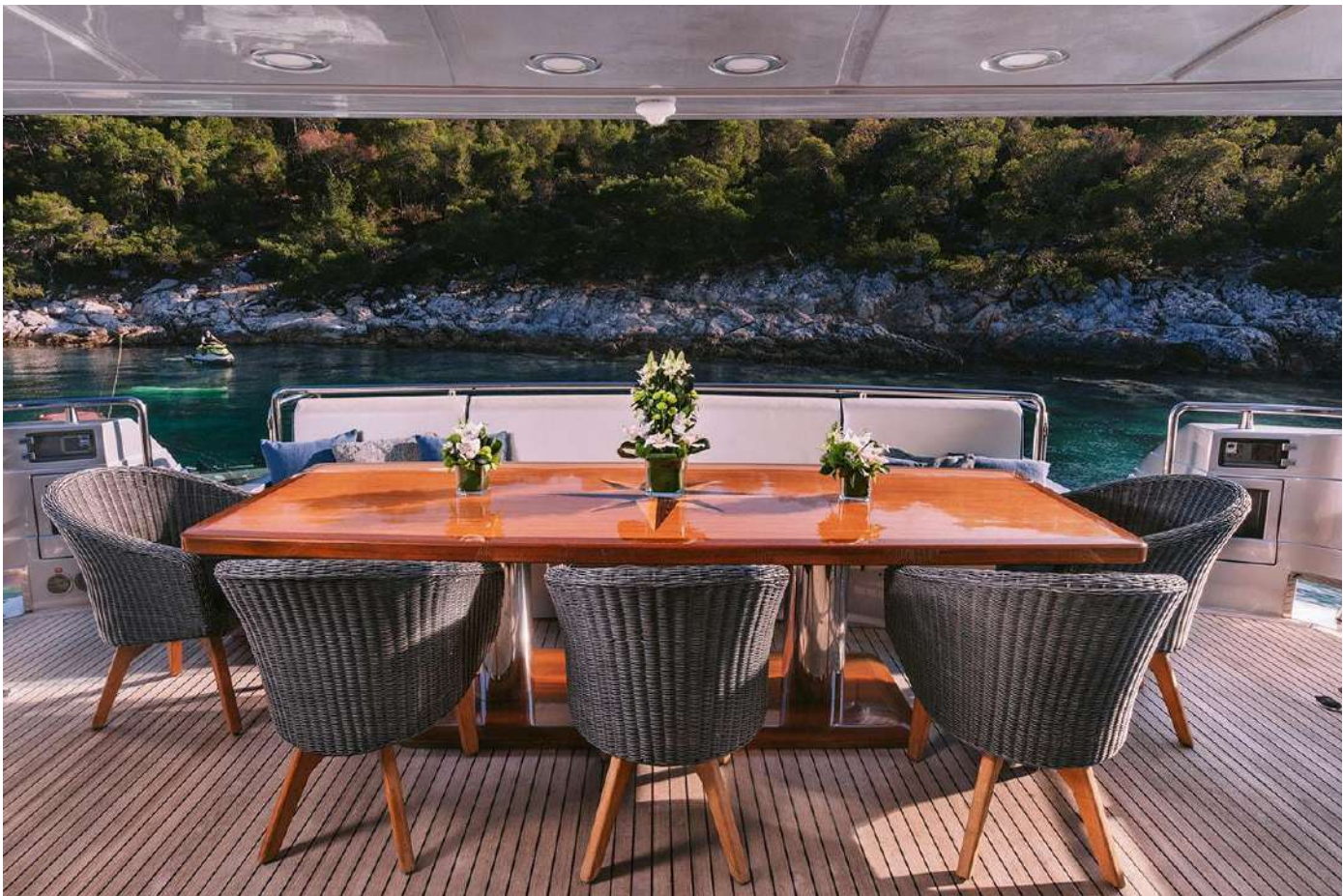
breezeyachting swiss



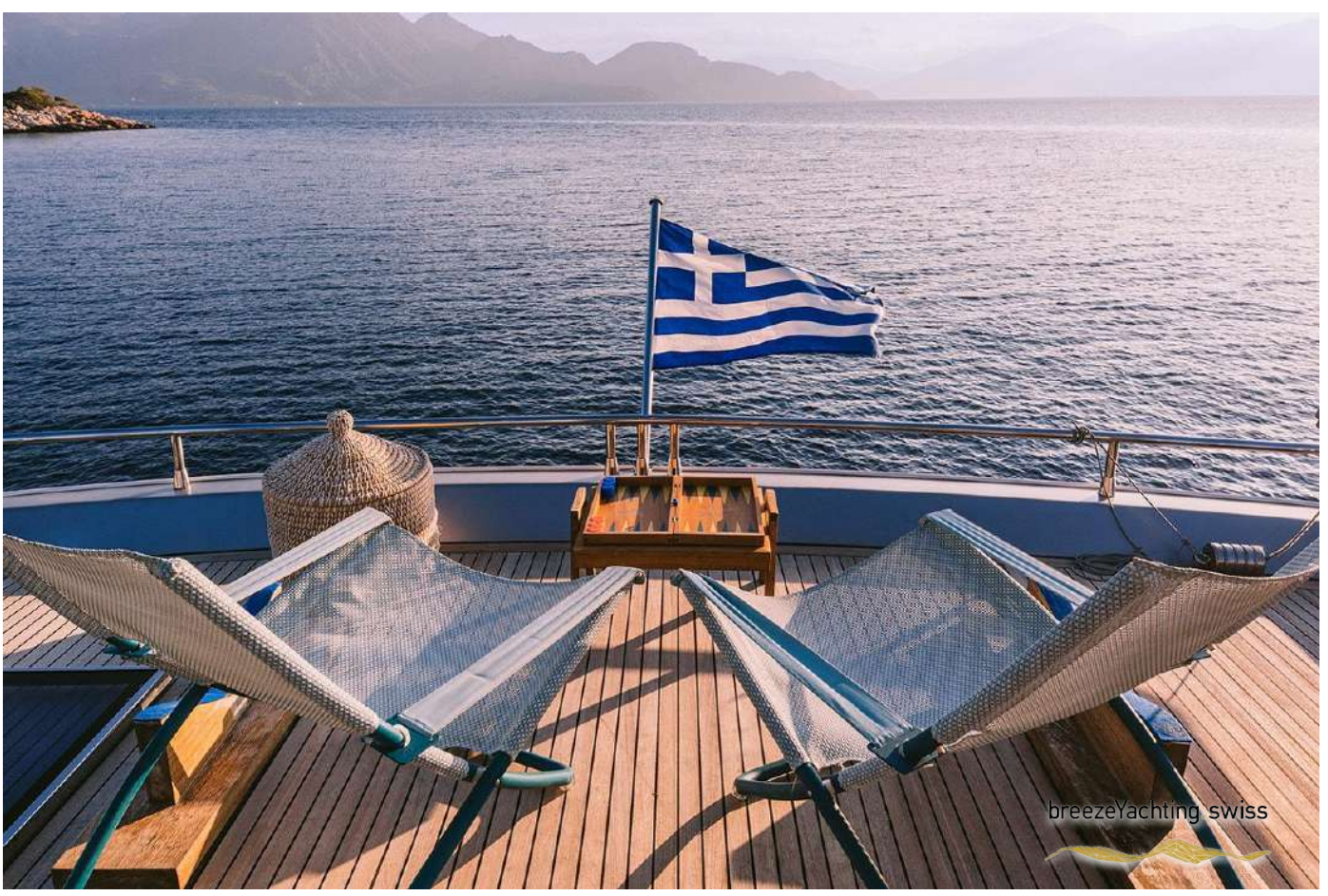


breezeYachting swiss













SPECIFICATIONS

Builder:	Posillipo
Model:	Technema 95
Year Built:	2006
Refit Year:	2011, 2021
Hull/Superstructure:	GRP / Carbon Fiber
Gross Tonnage:	147 GT
Flag:	Greece
Deck material:	Teak
Length overall:	30.2 m
Beam:	6.8 m
Draft:	2.2 m
Cabins:	5
Cabins Configuration:	Master Cabin + 2 Double + 2 Twin
Sleeps:	12
Crew:	6
Heads:	3
Engine:	2 x M.T.U. 2400 HP Diesel
Engine power:	4800 HP
Maximum speed:	30 kn
Cruising speed:	23 kn
Range:	350nm







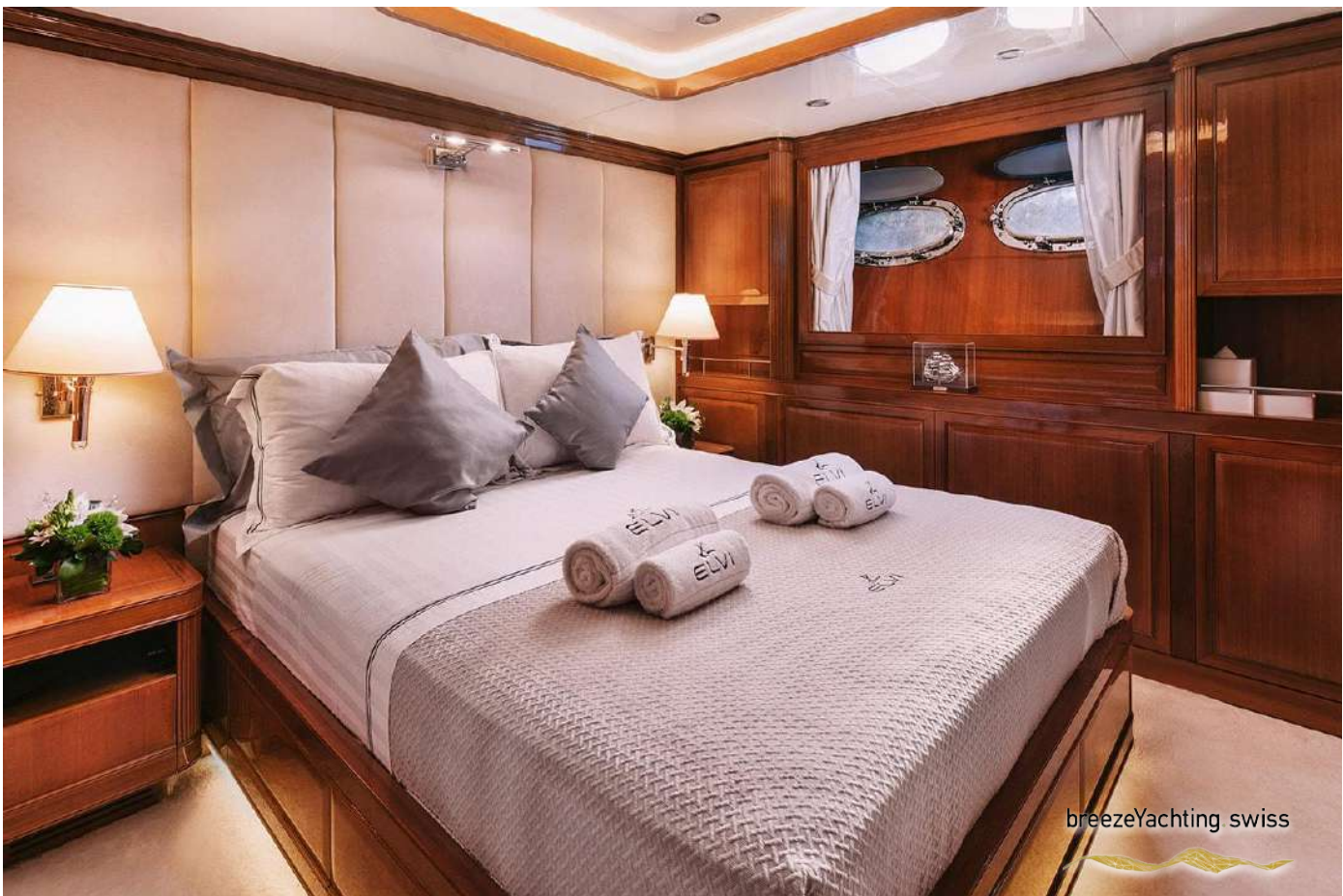
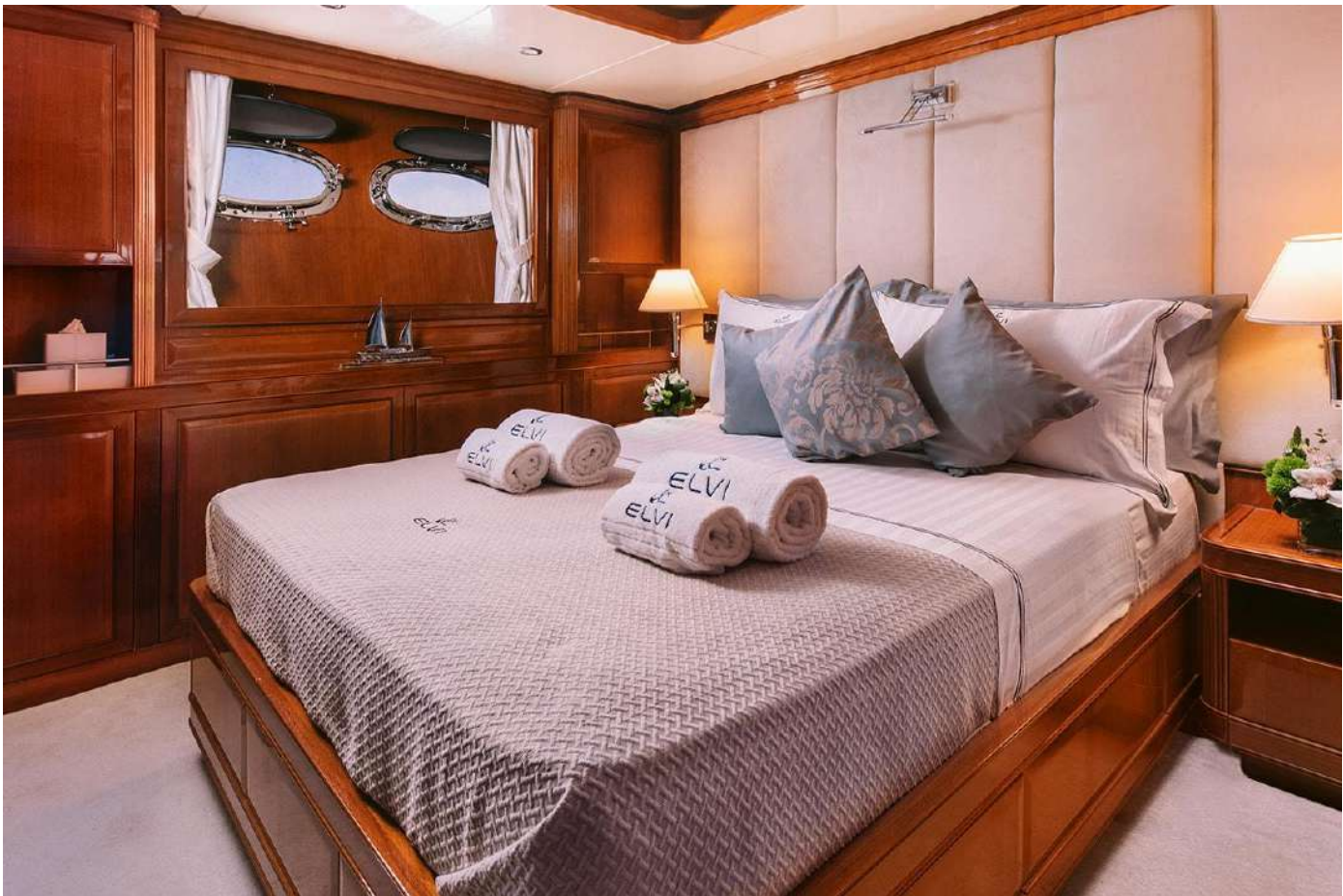


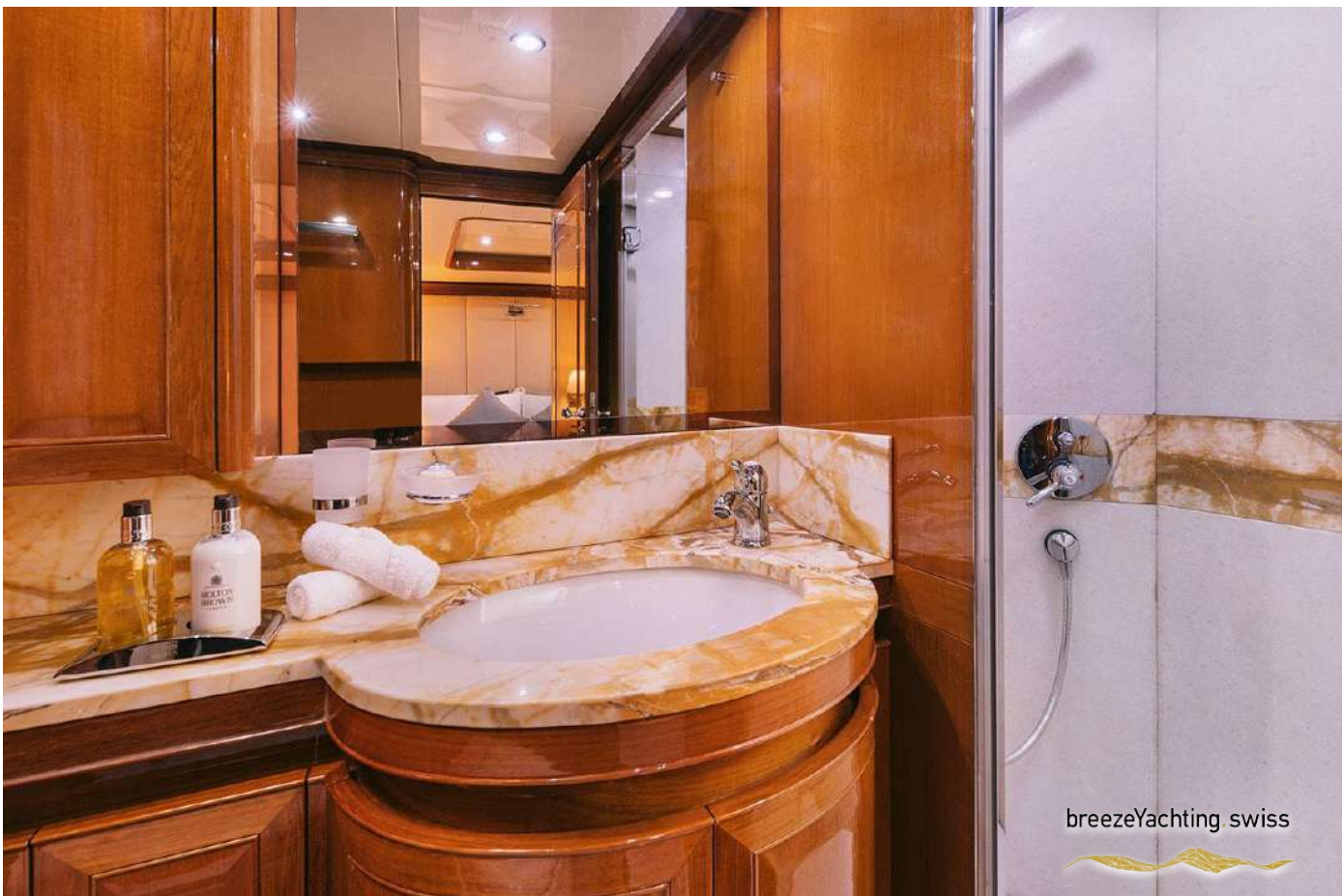
Accommodations

A full-beam master cabin situated on the main deck offers luxurious accommodation and privacy for discerning guests. With a versatile interior layout, ELVI caters to various guest preferences, ensuring comfort and convenience.

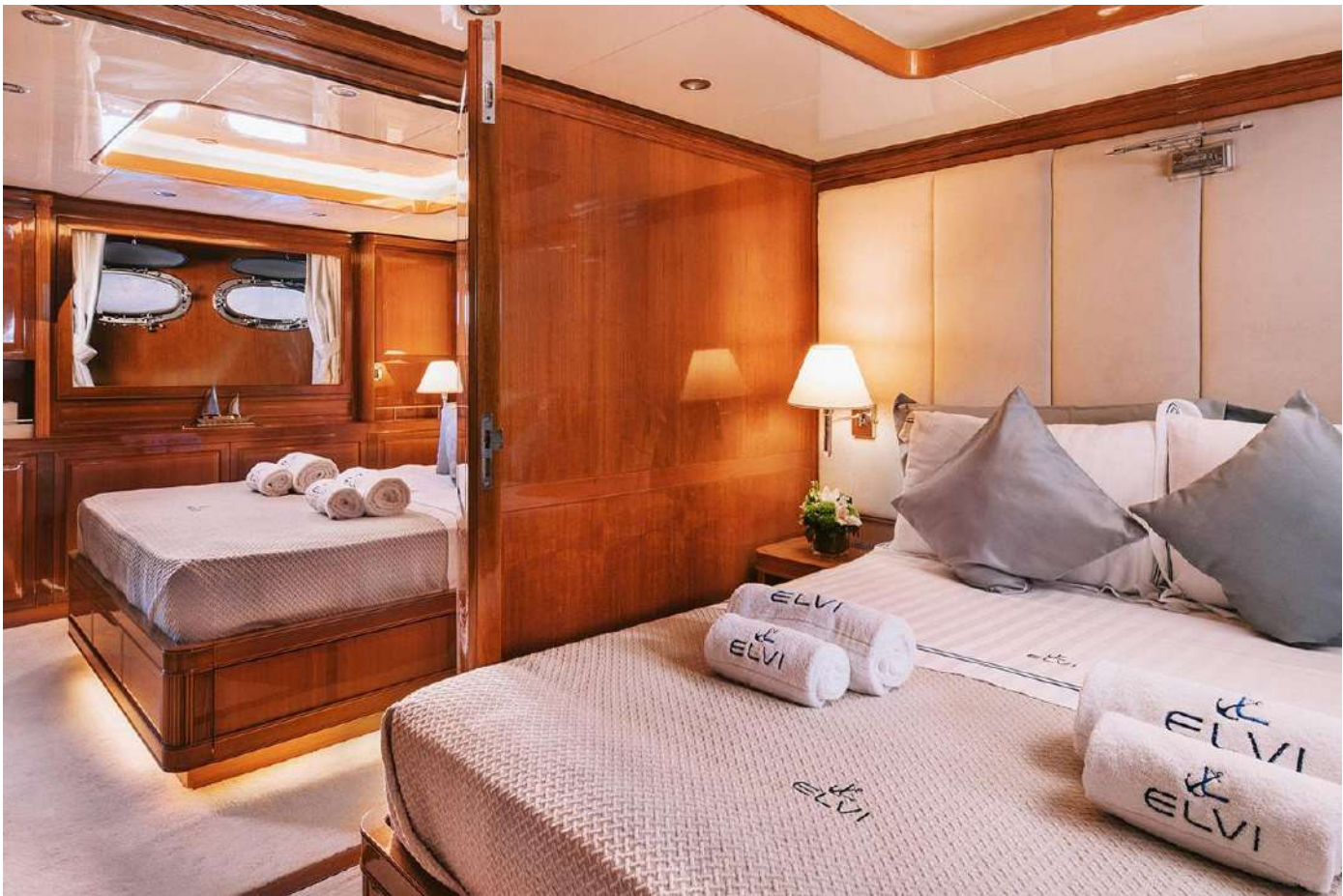
All of ELVI's interior was fully refreshed in 2021, ensuring that the yacht is as new for her guests.

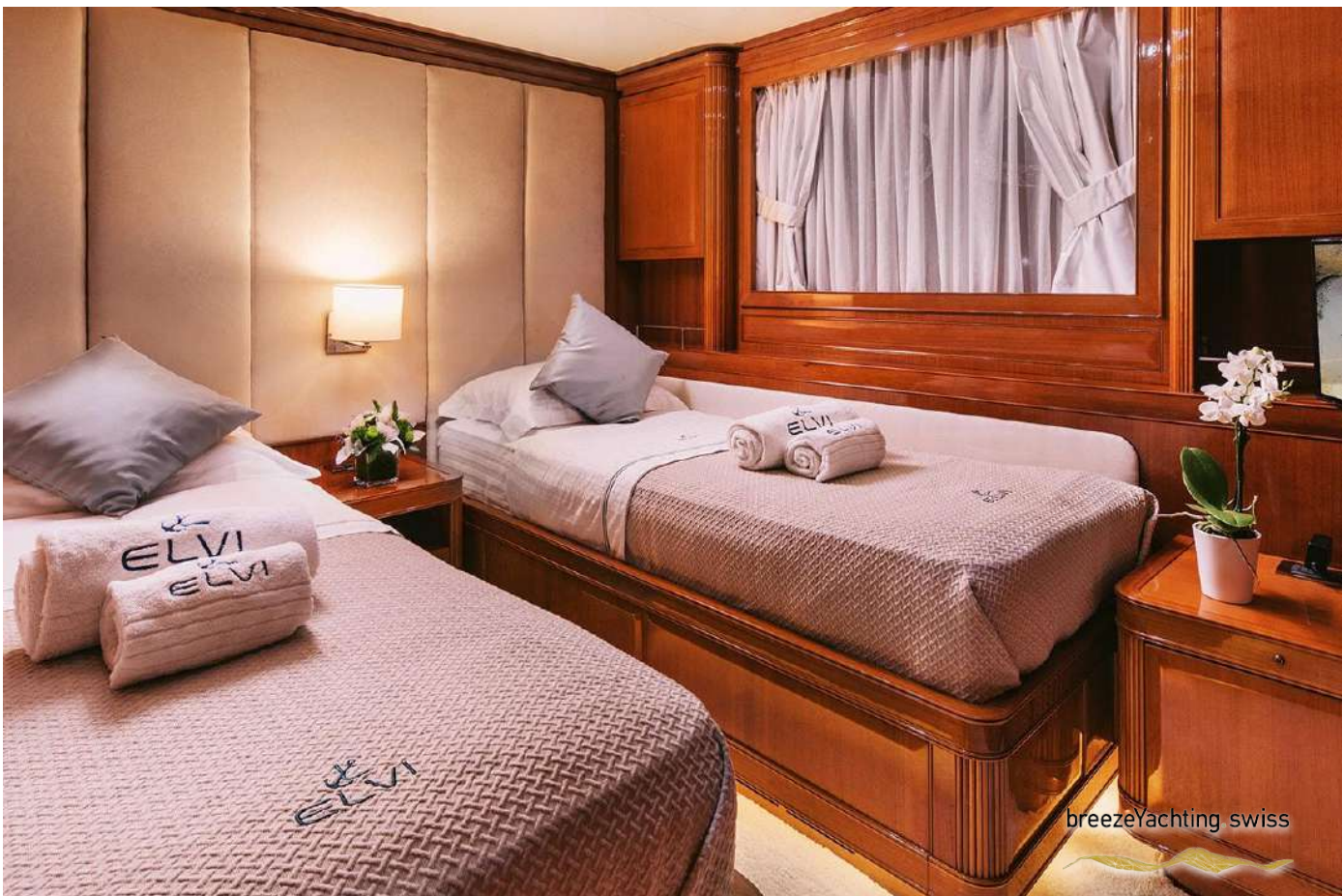
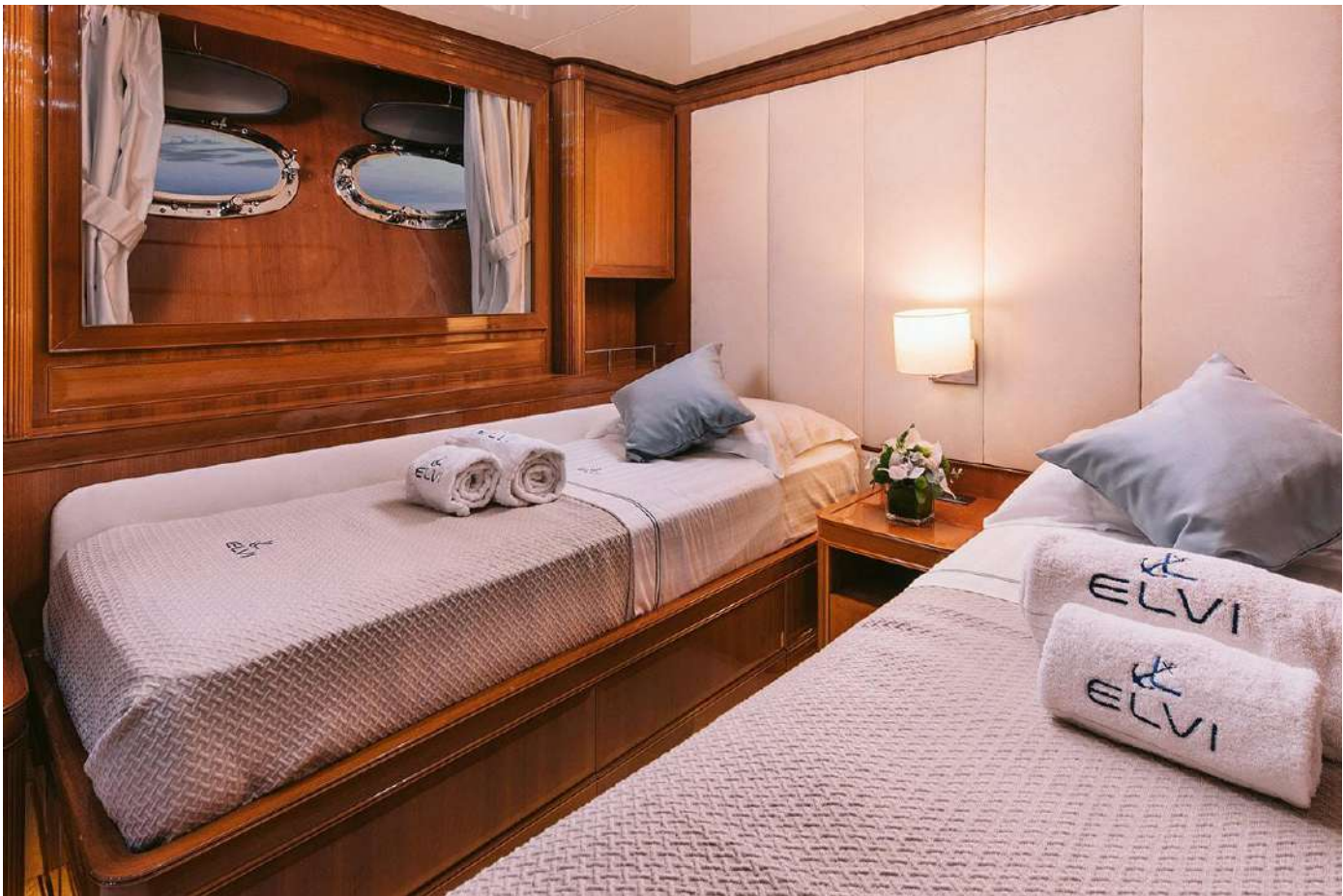


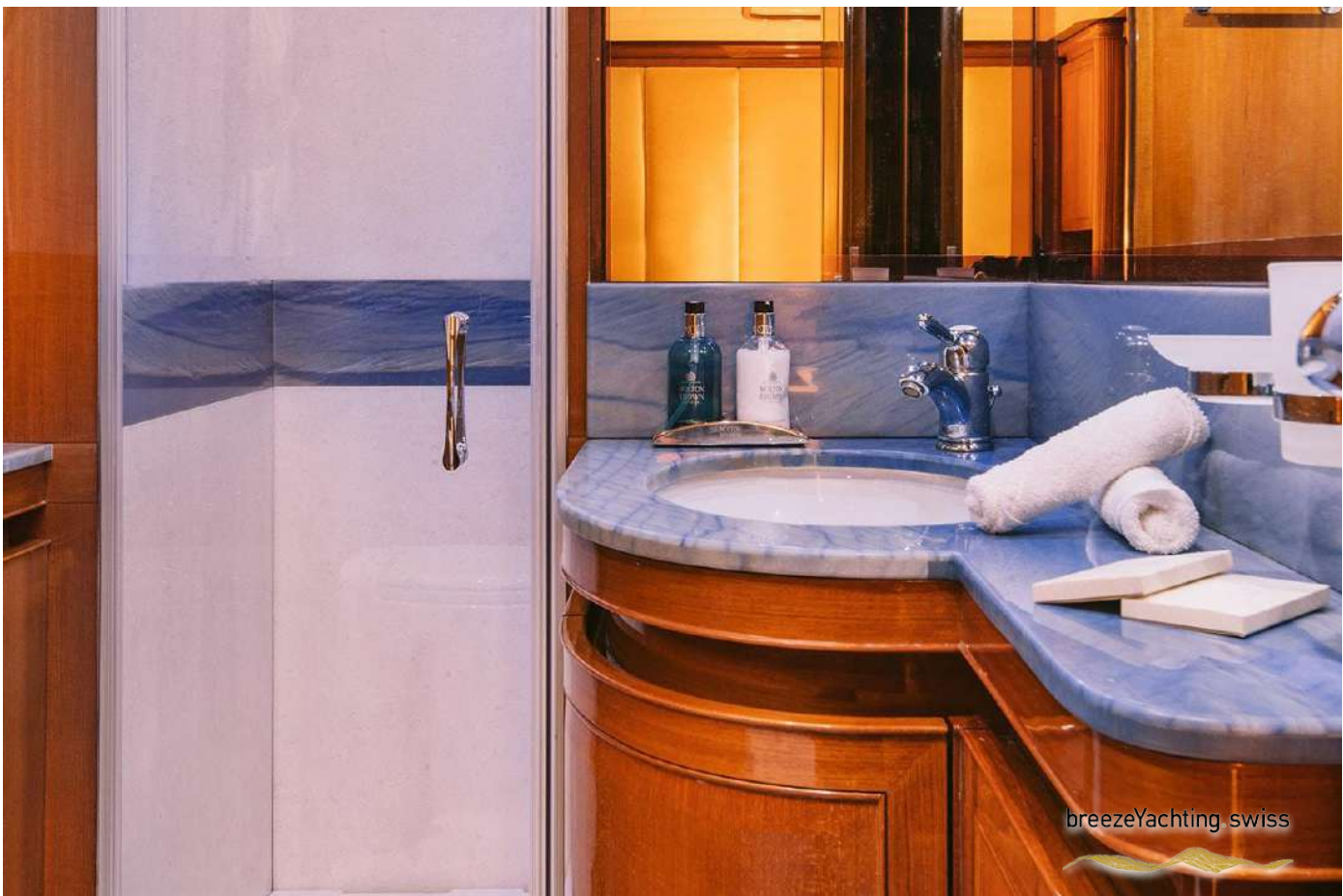
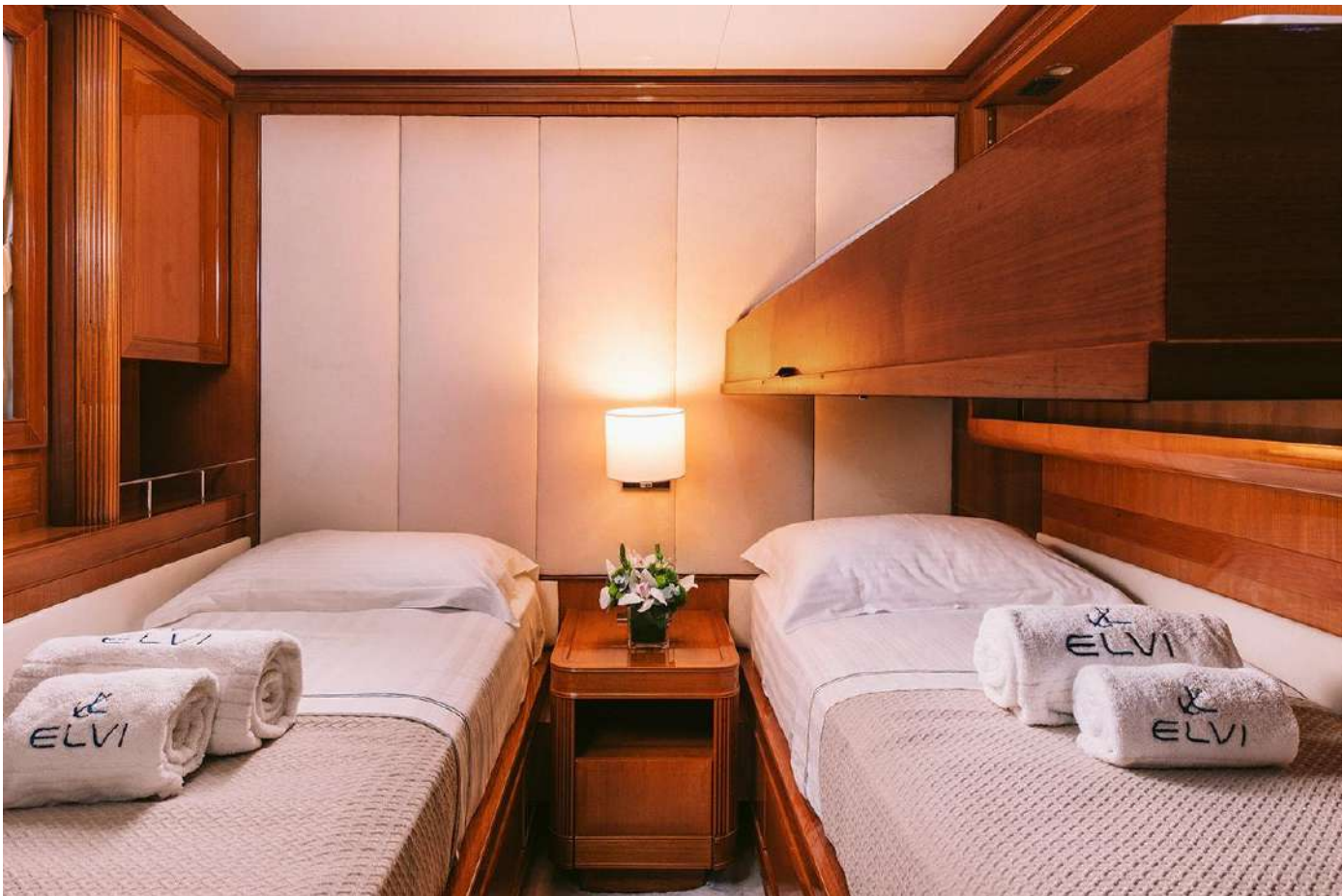




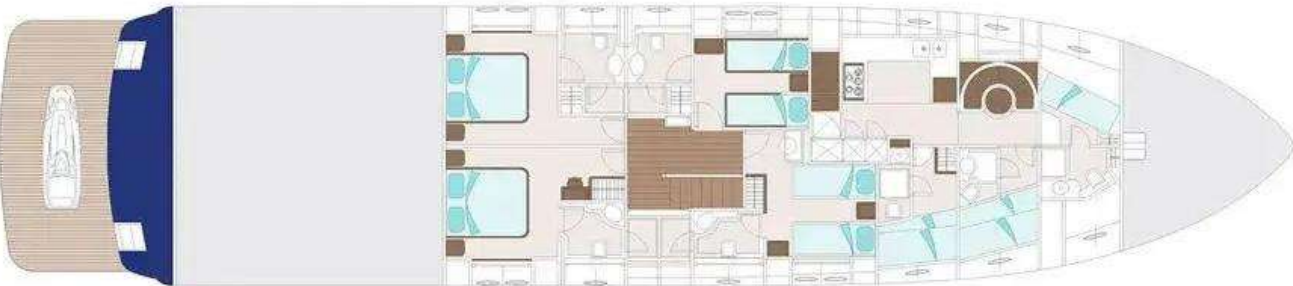
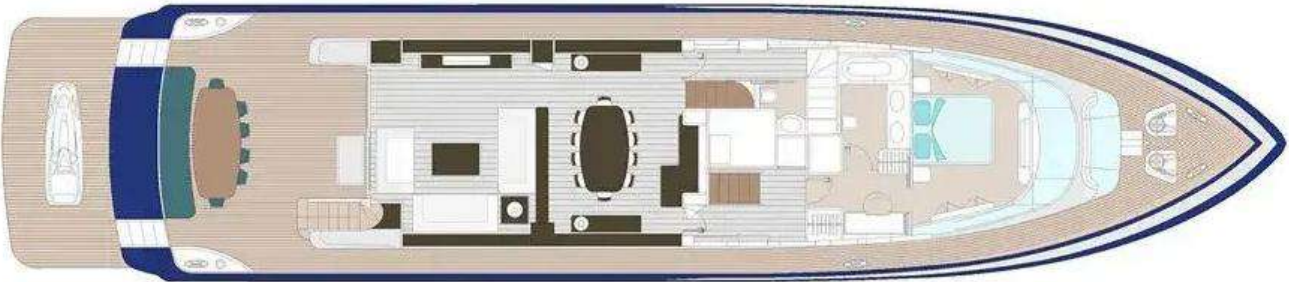






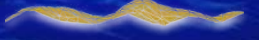
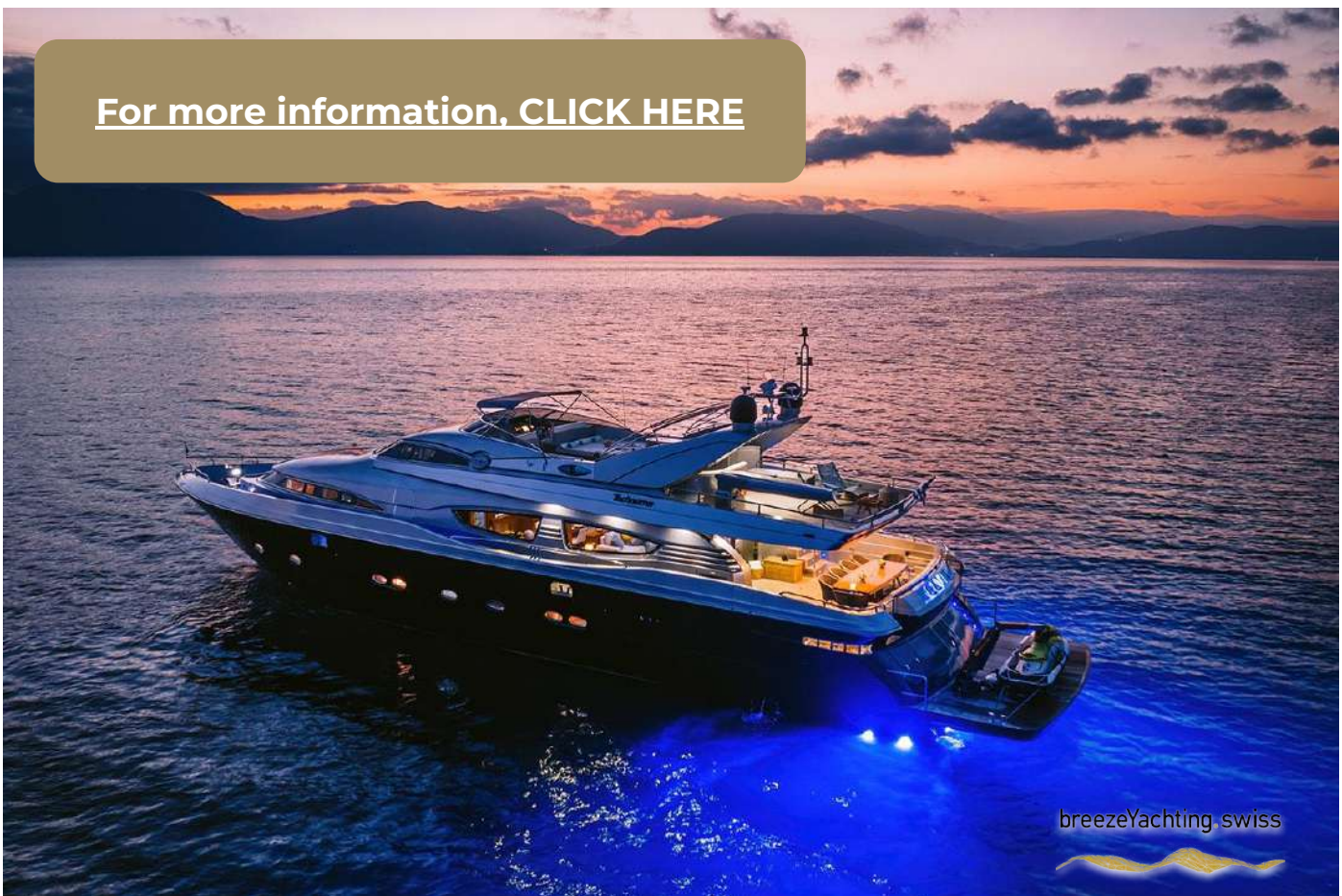


LAYOUTS






[For more information, CLICK HERE](#)





ANASTASIA PAK
Charter Advisor

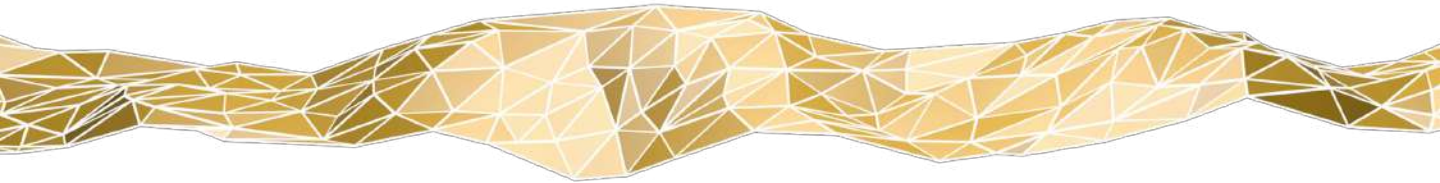
 WHATSAPP ME

m. +33 7 67 19 54 87

e. apg@breezeyachting.swiss

breezeYachting.swiss

WE SPEAK YACHTING. LET'S TALK.



Switzerland ● Malta ● Spain ● Monaco

www.breezeyachting.swiss

DISCLAIMER

The company offers the details of this vessel in good faith but cannot guarantee or warrant the accuracy of this information nor warrant the condition of the vessel. A buyer should instruct his agents, or his surveyors, to investigate such details as the buyer desires validated. This vessel is offered subject to prior sale, price change or withdrawal without notice.