

breezeYachting.swiss



SANLORENZO SL106 'GOLDEN YACHT'

from 82'000 EUR p/week | 32.31m | Greece

Discover GOLDEN YACHT, the epitome of nautical elegance, crafted in 2014 by the renowned Sanlorenzo, available for charter in Greece.

Experience exceptional service with a handpicked crew of 6, dedicated to creating unforgettable moments. Immerse yourself in panoramic views through expansive windows, unwind in the inviting salon, or bask in luxury on the flybridge with its Jacuzzi and sumptuous lounging spots. For those magical sunset experiences, the foredeck awaits.

Dining on the GOLDEN YACHT offers a refined experience, with a sundeck table that accommodates 10 guests for outdoor meals and a main deck table that seats 8 for a more intimate setting. Whether relaxing in the Jacuzzi, enjoying a gourmet meal, or taking in the panoramic views, the GOLDEN YACHT ensures a journey marked by elegance and comfort on the open seas.



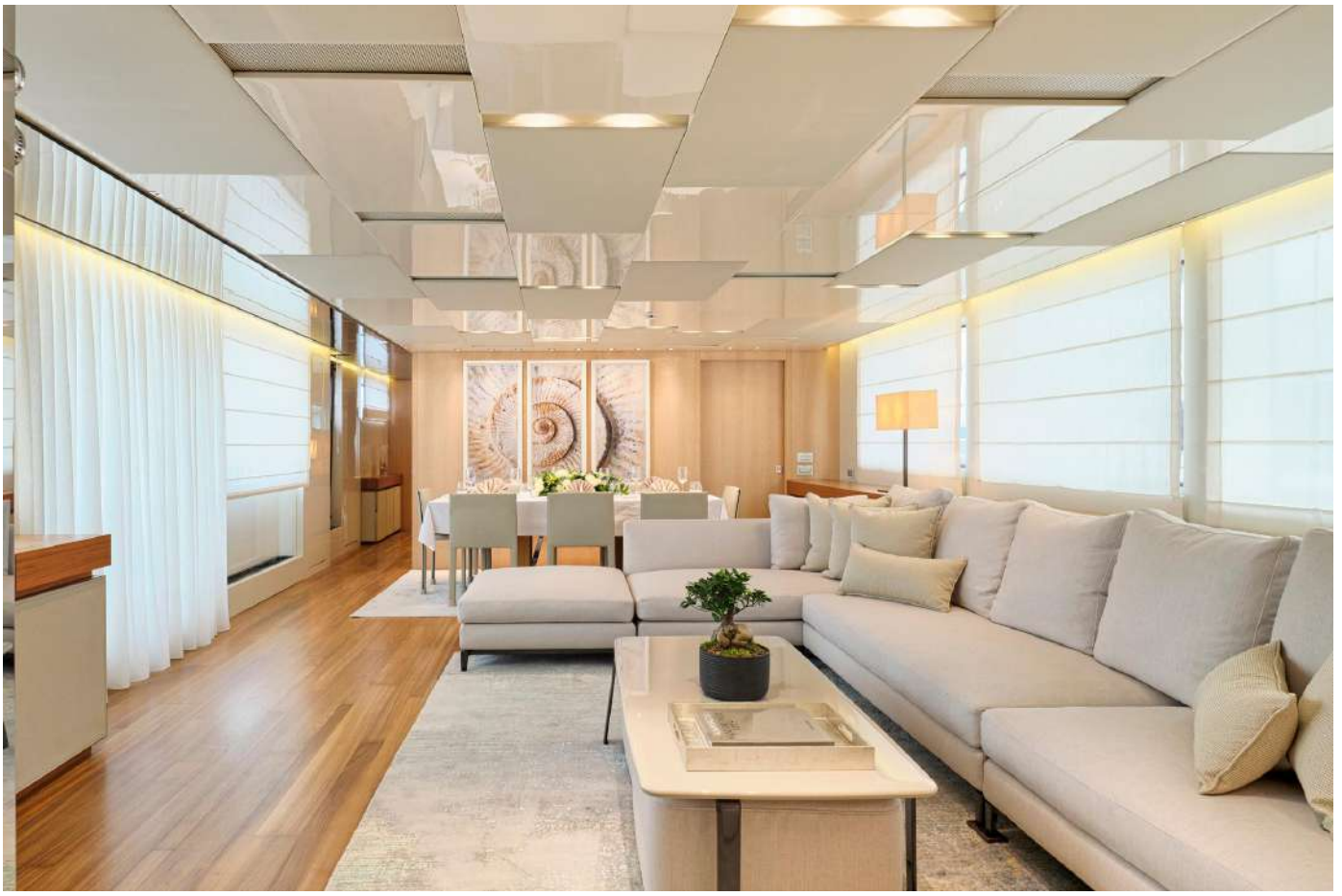
KEY POINTS

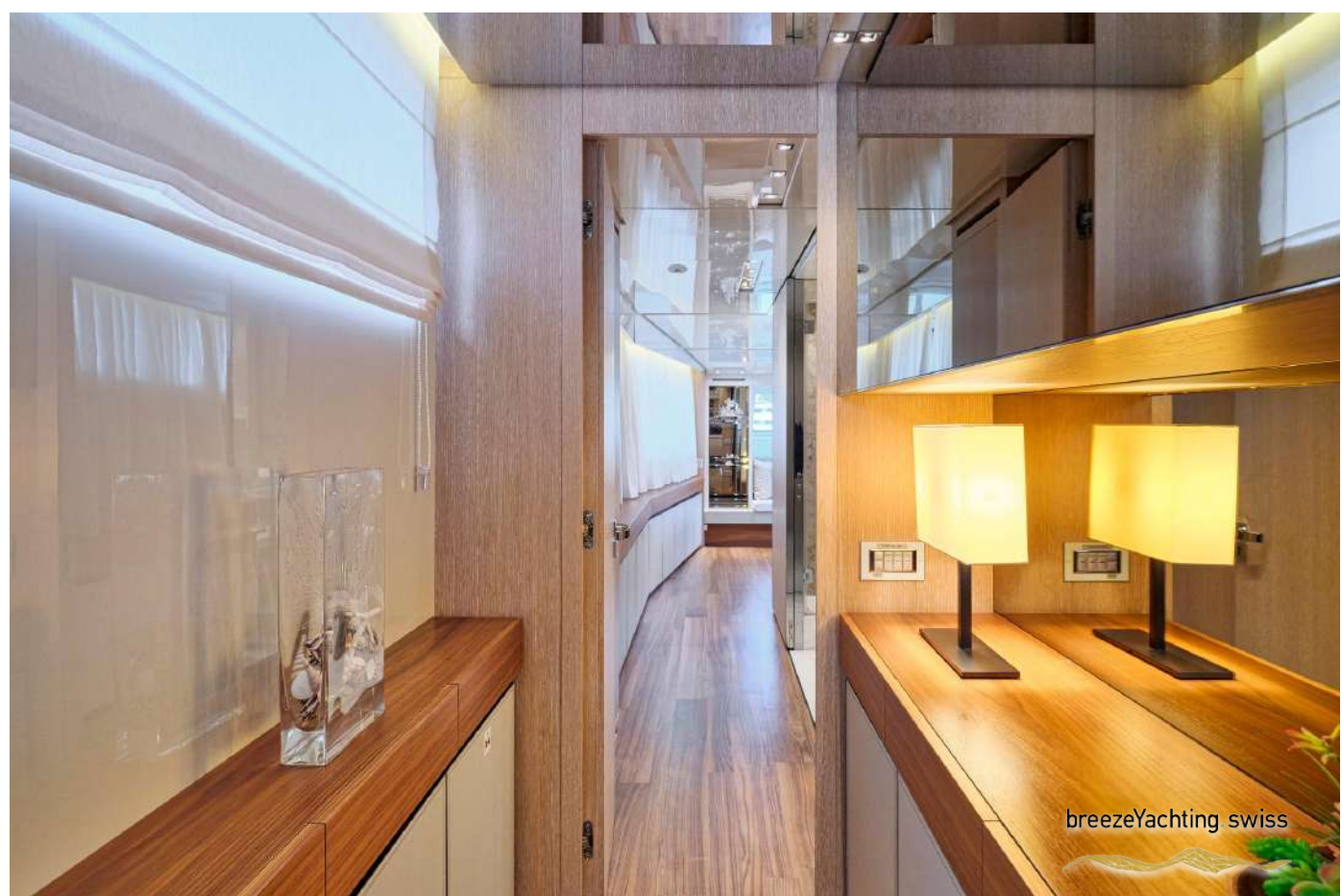
- Flexible Cabin configuration: 5 Double Cabins or 3 Doubles + 2 Twins
- Fold-down Balcony on the Main Deck
- Spacious Sundeck shaded by Hard Top
- Jacuzzi on the Sundeck
- Brand new list of water toys
- Submersible swim platform
- Experienced and Energetic crew with solid experience in chartering











Accommodation:

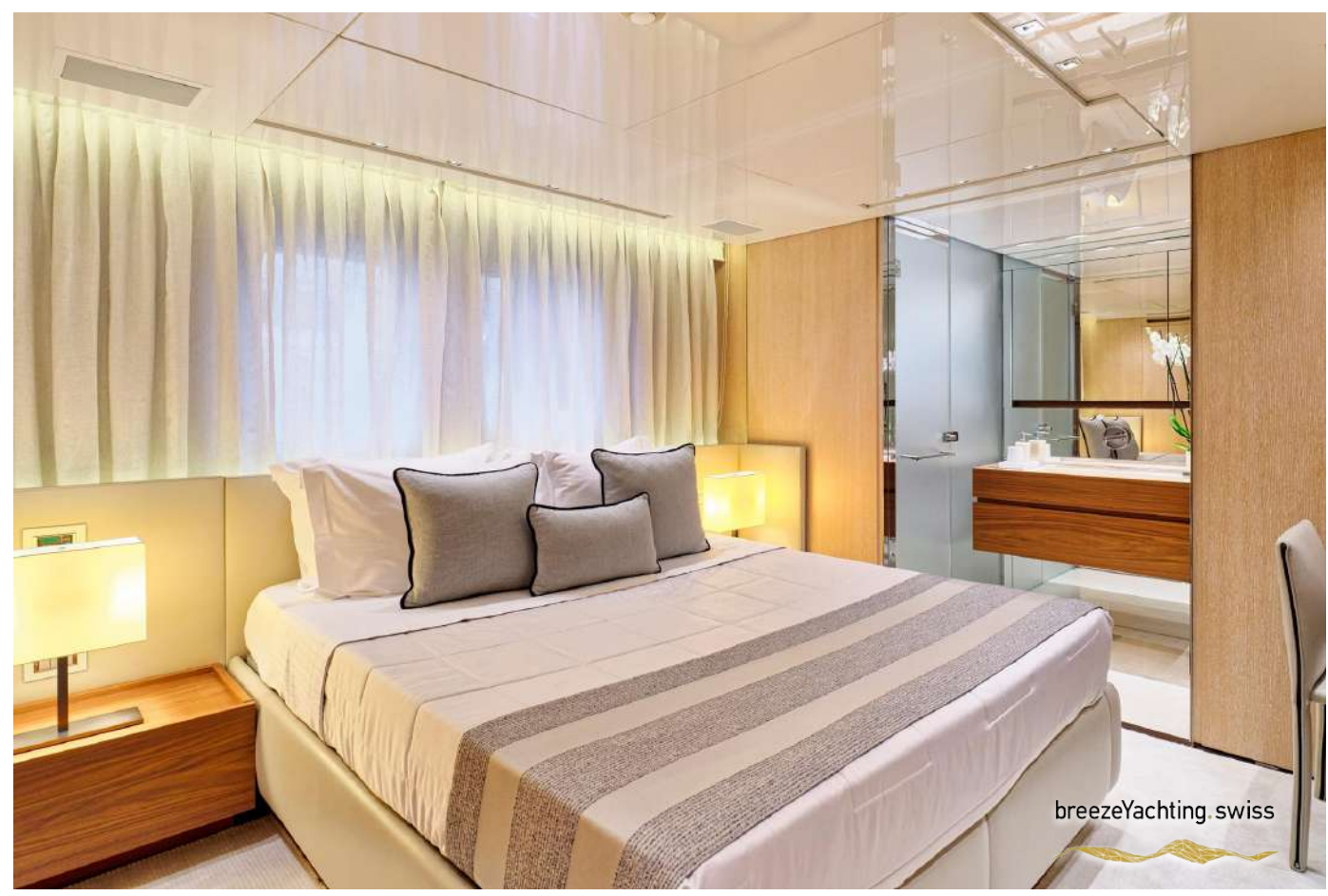
Designed with a contemporary beach house theme, GOLDEN YACHT comfortably sleeps 10 guests in 5 exquisite cabins, each with en-suite facilities and entertainment systems.

Master Cabin is located on the Main Deck with Walk-in Closet and en-suite facilities.
2 VIP Cabins are located on the Lower Deck with en-suite facilities.

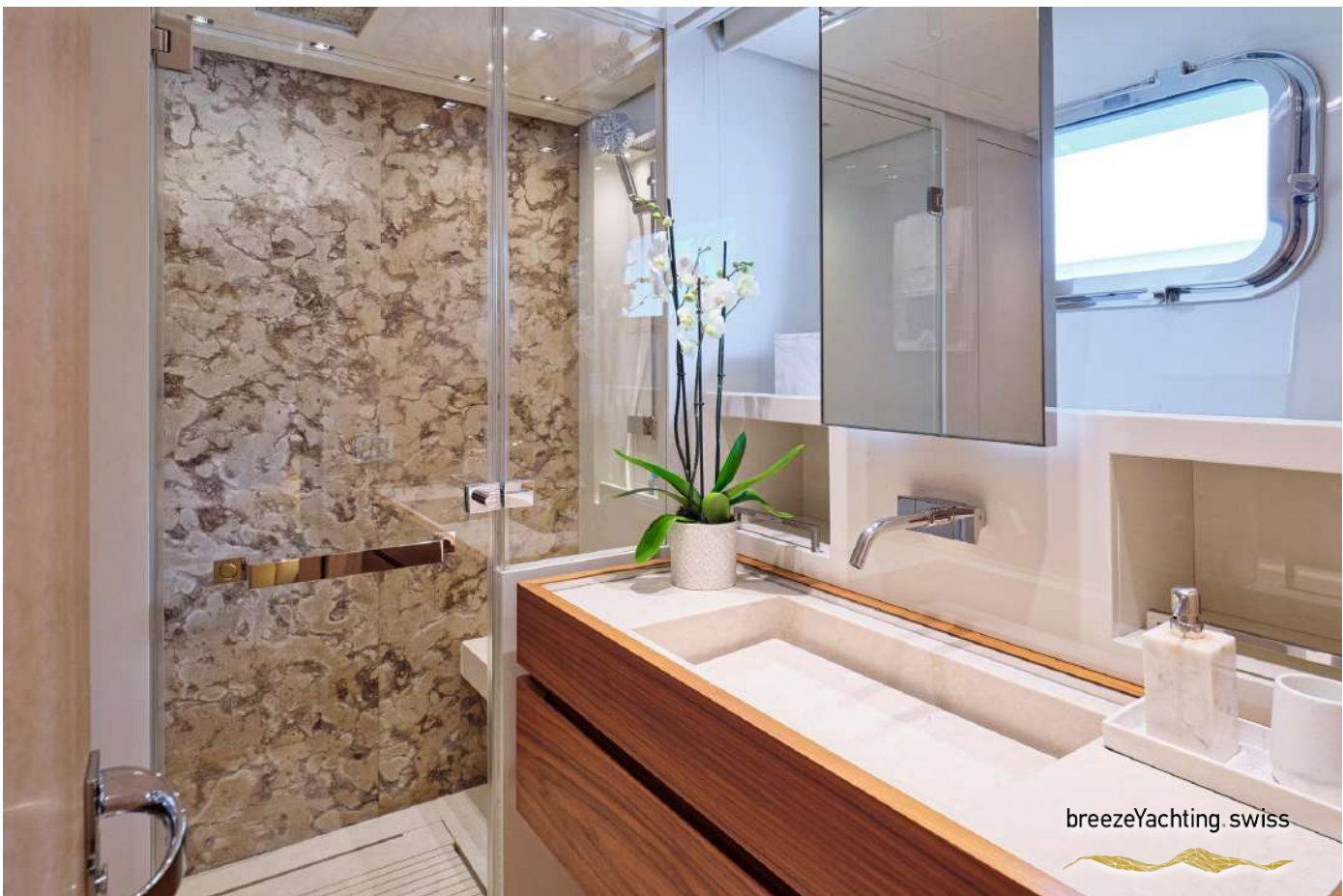
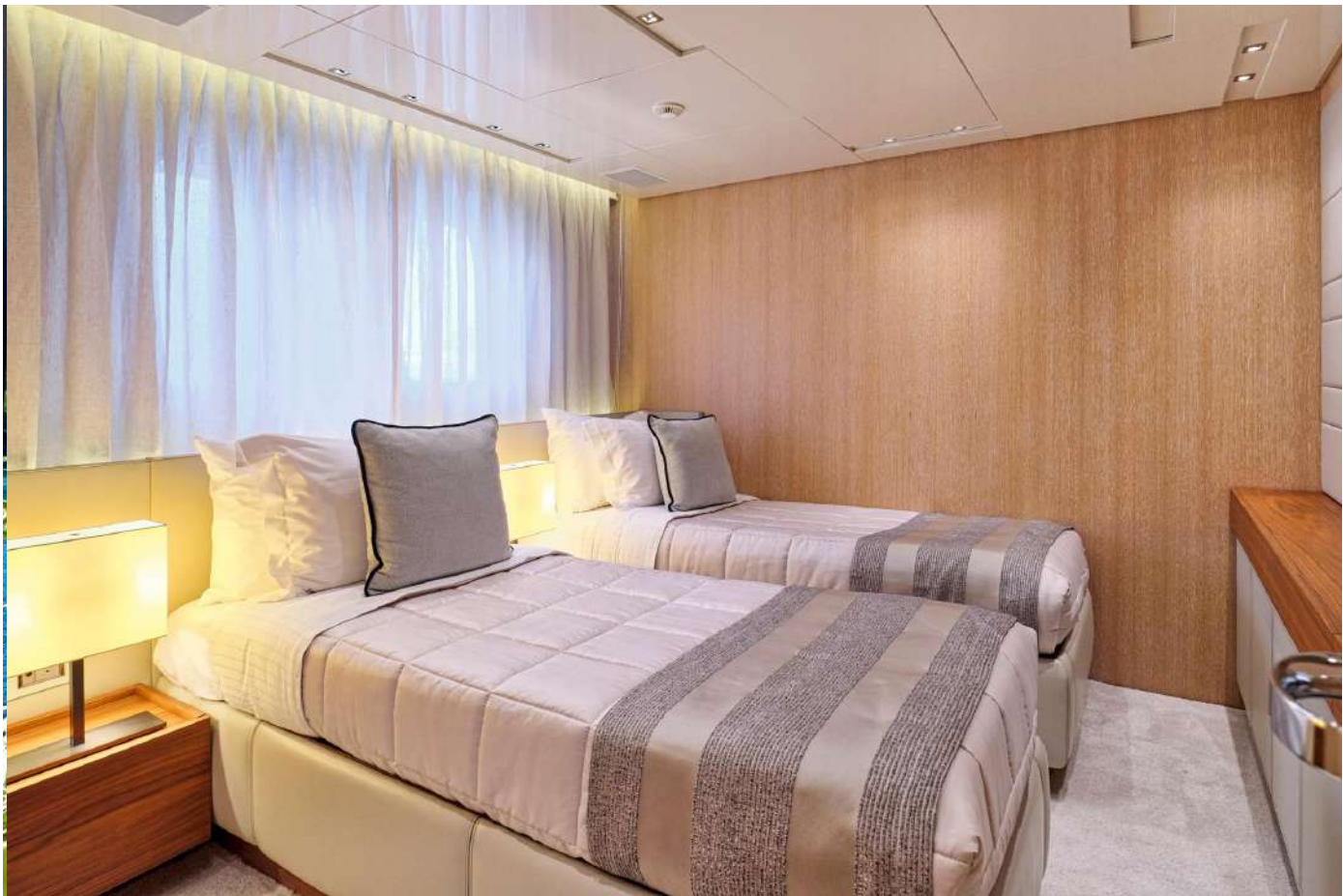
2 Twin Cabins on the lower deck are both convertible to Doubles, with en-suite facilities.











SPECIFICATIONS

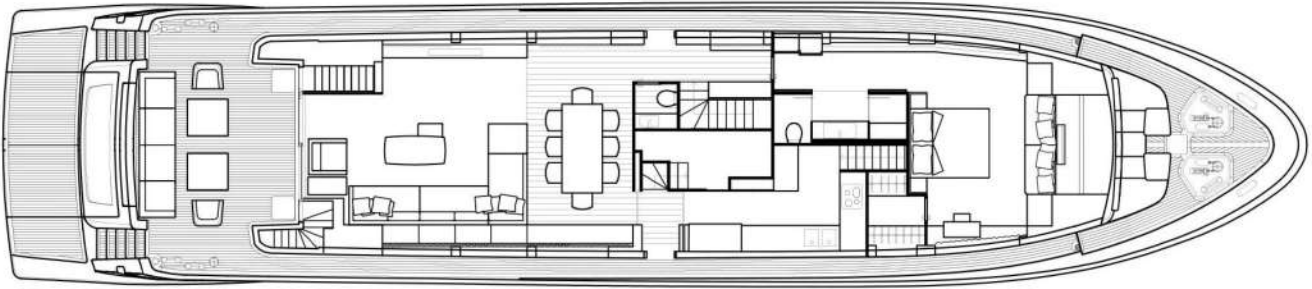
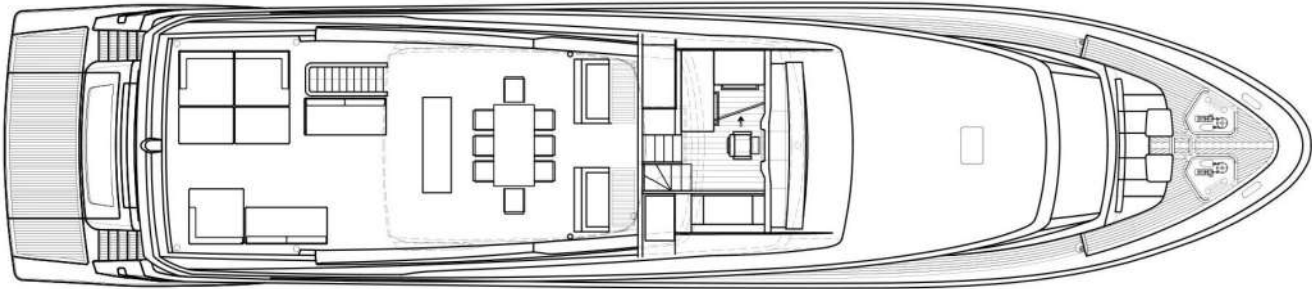
Builder:	Sanlorenzo
Model:	SL106
Year Built:	2014
Refit Year:	2024
Length overall:	32.31 m
Beam:	7.06 m
Draft:	1.93 m
Interior Desing:	Francesco Paszkowski
Exterior Design:	Francesco Paszkowski
Hull/Superstructure:	GRP / Carbon Fiber
Guests:	10
Staterooms:	5
Cabins Configuration:	Master Cabin (main deck) + 2 VIP + 2 Twin conv. to Doubles
Crew:	6
Engines:	2 x MTU 2400 HP 2000 M93
Cruising Speed:	21 kn
Top Speed:	28 kn
Fuel Consumption:	700 l/h

WATER TOYS

- Williams Tender 395
- 1 x Jetski 3-Seater Seadoo Spark
- 2 x Seabobs F5
- 2 x SUP
- Wakeboard
- Tube,
- Inflatable Platform
- 2 x Adult Ski
- Snorkelling material
- 37' Axopar – at extra cost



LAYOUTS



[WATCH THE VIDEO OF THE YACHT](#)



[For more information, CLICK HERE](#)



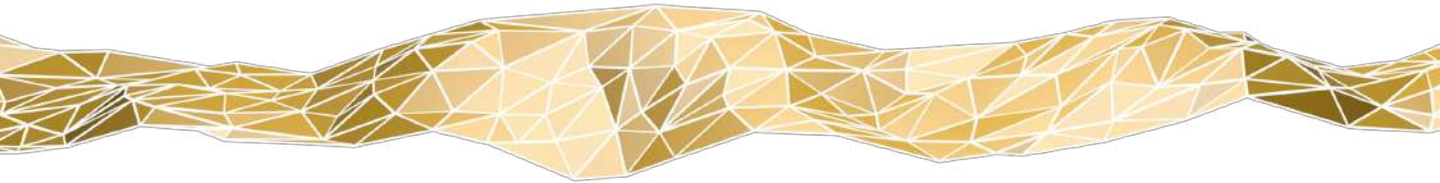


EKATERINA PARFENOVA
Charter Advisor

charters@breezeyachting.swiss

breezeYachting.swiss

WE SPEAK YACHTING. LET'S TALK.



Switzerland ● Malta ● Spain ● Monaco

www.breezeyachting.swiss

DISCLAIMER

The company offers the details of this vessel in good faith but cannot guarantee or warrant the accuracy of this information nor warrant the condition of the vessel. A buyer should instruct his agents, or his surveyors, to investigate such details as the buyer desires validated. This vessel is offered subject to prior sale, price change or withdrawal without notice.