

breezeYachting.swiss



# Sanlorenzo SL106

## 'WOMBAT'

from 89'000 EUR p/week | 32.31m | Greece

*WOMBAT is an exceptional Sanlorenzo SL106 yacht, offering space, elegance, and modern amenities, ideal for families, couples, or groups seeking a luxurious charter experience.*

Wombat offers bright, well-balanced interiors created to ensure privacy, wellbeing and a consistently enjoyable stay on board. Every area has been carefully considered to combine functionality, style and comfort, creating a harmonious and relaxed atmosphere throughout the day.

The main saloon welcomes guests into an elegant, contemporary setting defined by refined furnishings, high-quality finishes and a natural continuity with the exterior spaces. The opening side balcony makes this area even more special, extending the saloon towards the sea and creating a direct connection with the surrounding scenery.

Wombat's exterior areas have also been designed to deliver a complete on-board experience. The sundeck features a wet bar, generous sunpads and a dining area sheltered by an electric hard top, making it the perfect setting to enjoy every moment of the day in comfort and privacy. Aft, the spacious beach area and selection of water toys make time at sea even more dynamic and engaging.



# KEY POINTS

- passionate crew of six with excellent charter references
- chef awarded at MEDYS 2026
- main-deck owner's suite with 180-degree forward-facing windows, office, dressing area
- hydraulic fold-down balcony on main deck saloon
- generous sundeck with dining area, wet bar, sun lounging and electric hard top
- large beach club with hydraulic swim platform
- vast variety of water toys
- stabilizers, both underway and at anchor for improved comfort









# Accommodation

Wombat accommodates up to 11 guests across five cabins. One of the most distinctive features of Sanlorenzo SL106 Wombat is the full-beam owner's suite on the main deck, enhanced by spectacular 180-degree forward-facing windows that flood the space with natural light and strengthen the connection with the sea.

A private office and dedicated dressing area add a further sense of exclusivity to a space conceived to offer peace, privacy and a superior quality of life on board.







# SPECIFICATIONS

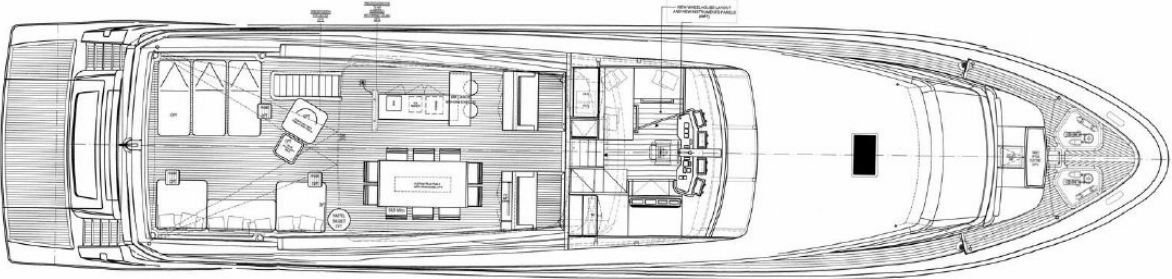
<b>Builder:</b>	Sanlorenzo
<b>Model:</b>	SL106
<b>Year:</b>	2019
<b>Refit year:</b>	2025
<b>Location:</b>	Greece
<b>Length overall:</b>	32.31 m
<b>Beam:</b>	7.06 m
<b>Draft:</b>	1.98 m
<b>Cabins:</b>	5
<b>Cabins Configuration:</b>	1 master, 3 doubles, 1 twin
<b>Guests:</b>	11
<b>Crew:</b>	6
<b>Cruising speed:</b>	22 kn
<b>Top speed:</b>	28 kn
<b>Stabilization:</b>	Yes



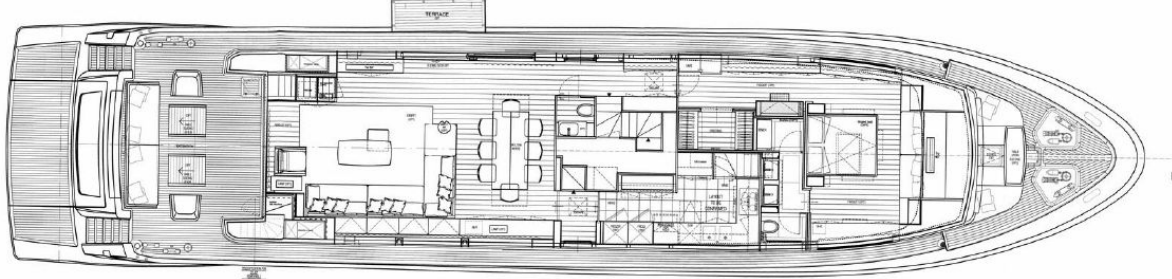
# LAYOUTS



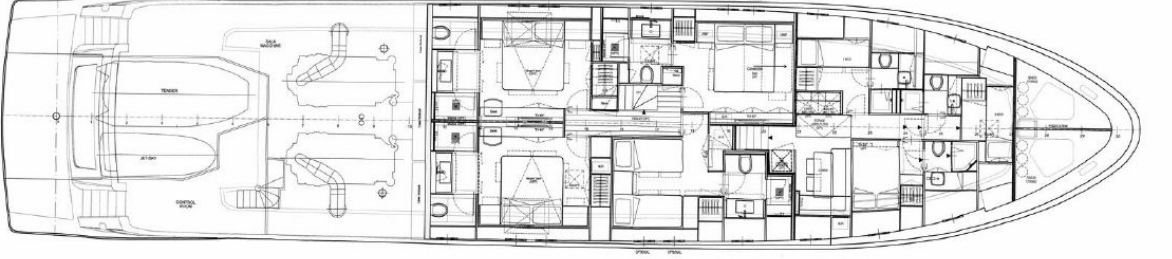
Profilo / Profile  
(RIGHT SIDE)



Ponte Fly / Fly Deck



Ponte Coperta / Main Deck



Ponte Cabine / Lower Deck





## TENDERS & WATER TOYS

- Tender Williams 4.35m with jet engine
- Sea-doo rxt-x 300
- 2 x seabobs f5s
- ski (adults & children)
- monoski (adults)
- wakeskate
- inflatable kayak 2-seater
- 2 x inflatable sup
- inflatable trampoline
- tubes
- sofa 4-seater
- Fliteboard
- snorkelling equipment



For more information, [CLICK HERE](#)

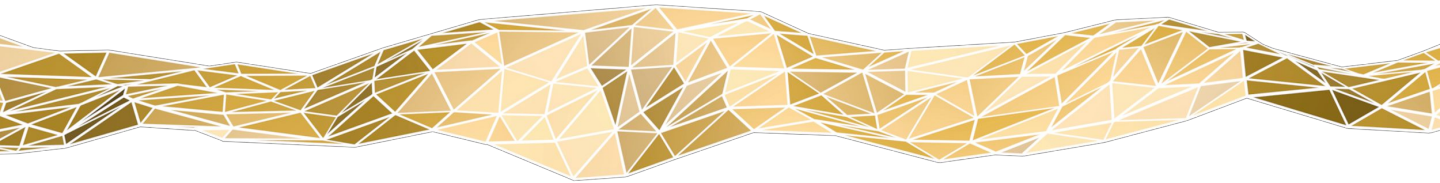


## CONTACT US

[charters@breezeyachting.swiss](mailto:charters@breezeyachting.swiss)

# breezeYachting.swiss

WE SPEAK YACHTING. LET'S TALK.



Switzerland ● Malta ● Spain ● Monaco ● St. Tropez

[www.breezeyachting.swiss](http://www.breezeyachting.swiss)

### DISCLAIMER

The company offers the details of this vessel in good faith but cannot guarantee or warrant the accuracy of this information nor warrant the condition of the vessel. A buyer should instruct his agents, or his surveyors, to investigate such details as the buyer desires validated. This vessel is offered subject to prior sale, price change or withdrawal without notice.