

breezeYachting.swiss



Amels 171 Limited edition

'WERE DREAMS'

€16'950'000 excl. vat | 52.3m | 2008

KEY POINTS

- Reliable dutch quality and unshakable reputation of Amels brand
- Expansive 70 m² full-beam master suite on the main deck
- 6 en-suite cabins
- 4,500 nm range — perfect for transatlantic and ocean crossings
- One of just 100 Amels yachts ever built — a truly rare opportunity



SPECIFICATIONS

Builder:	Amels
Model:	Limited Edition Amels 171
Year:	2008
Hull/Superstructure:	Steel / Aluminium
Deck material:	Teak
Class:	Lloyd's 100A1 SSC Yacht mono G6 LMC UMS
Location:	Cannes, France
Flag:	Cayman Islands
Interior Designer:	Studio Laura Sessa
Exterior Designer:	Tim Heywood Design Ltd.
Length overall:	52.3 m
Load Line Length:	45.8 m
Beam:	9.8 m
Draft:	3.35 m
Displacement:	706.96 t
Gross Tonnage:	642 GT
Guests:	11
Staterooms:	6
Guest Cabins layout:	1 x Master Cabin, 4 x Guest Cabins, 1 x Single Cabin
Heads:	6 Guest Heads, 3 Day Heads + 8 Crew Heads
Crew:	13
Crew cabins:	8
Crew cabins layout:	1 x Captain's, 2 x Single Cabins, 5 x Double Cabin
Engines:	2 x MTU 16V2000 M70 11B
Total Power:	2 x 1400 HP / 1050 Kw each
Engine Hours (Port):	20307 hrs (Oct 2025)
Engine Hours (Stbd):	20377 hrs (Oct 2025)
Generators:	2 x Northern L M1066H / 155 Kw + 1 x L M1066H / 80 Kw
Generator Hours (Port):	2,984 hrs since overhaul in 2024, total 44,175 hrs (Oct 2025)
Generator Hours (Stbd):	2,824 hrs since overhaul in 2024, total 47,560 hrs (Oct 2025)
Generator Hours (emergency):	148 hrs (Oct 2025)
Stabilizer:	Naiad 820 fins, underway & Zero Speed
Economical Speed:	11.5 kts @ 1450 rpm
Cruising Speed:	13.7 kts @ 1700 rpm
Maximum Speed:	15.8 kts @ 2100 rpm
Range:	4,500 NM @ 11.5 kts
Fuel Consumption:	2 x 140 l/h @ 11.5 kts
Fuel:	115,000 L (7 Storage Tanks, 2 Daily tank, 1 Service tank)
Fresh water:	17,000 L (2 Tanks)
Gray Water:	27,470 L
Black Water:	2,700 L















breezeYachting swiss

















breezeYachting swiss

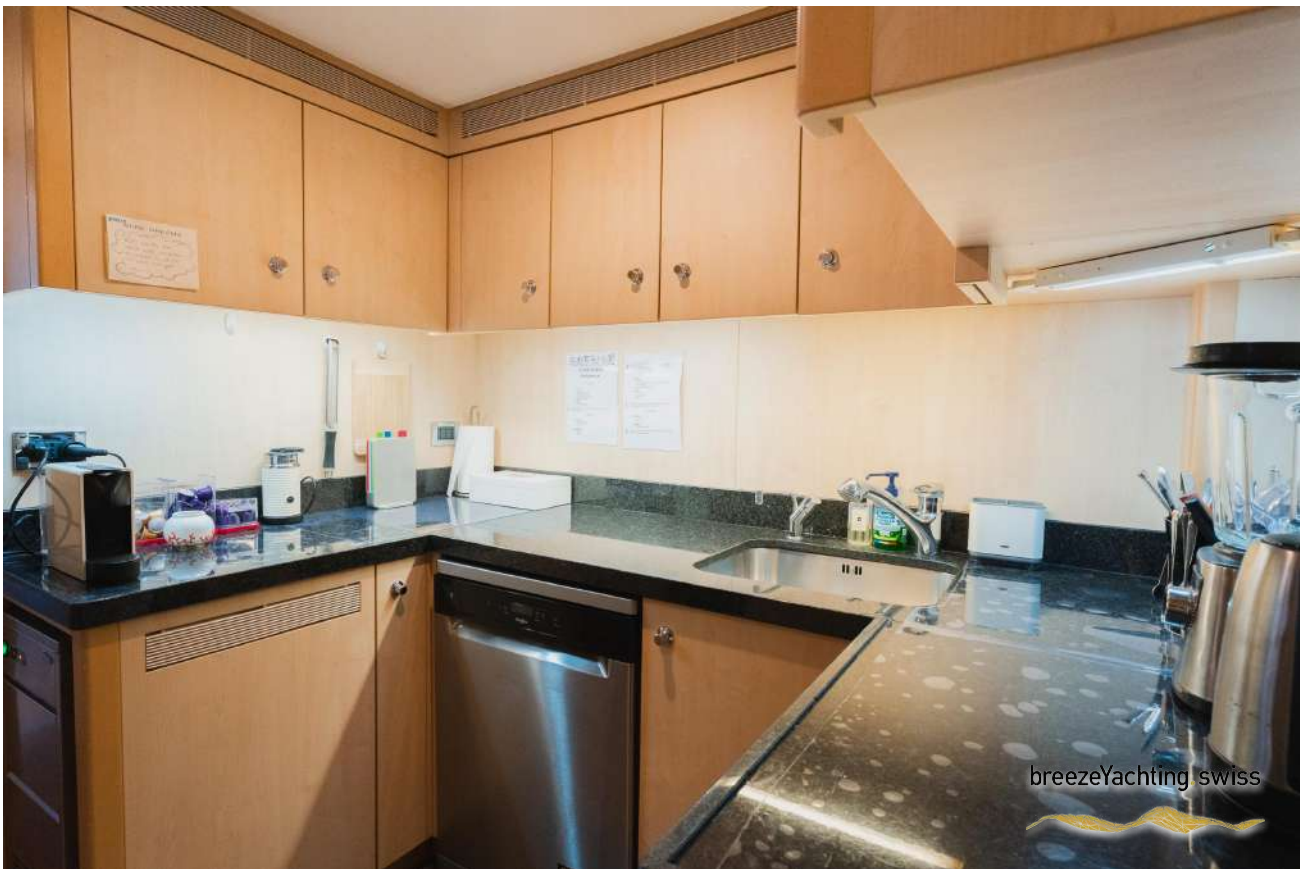




















EQUIPMENT

MECHANICAL EQUIPMENT

- Main Engines: 2 x MTU 16V2000 M70 11B
- Total Power: 2 x 1400 HP / 1050 Kw each
- Engine Hours (Port): 20.307 hrs (Oct 2025)
- Engine Hours (Stbd): 20.377 hrs (Oct 2025)
- Generators: 2 x Northern L M1066H / 155 Kw each
- Emergency Generator: 1 x Northern L M1066H / 80 Kw each
- Generator Hours (Port): 2.984 since overhaul in 2024, total running 44.175 hrs (Oct 2025)
- Generator Hours (Stb): 2.824 since overhaul in 2024, total running 47.560 hrs (Oct 2025)
- Generator Hours(Emergency): 148 hrs (Oct 2025)
- Gearboxes: Reintjes WAF562
- Steering System: Rolls Royce JR160 – 2PU30
- Stabilizers: Naiad 820 fins, underway & zero speed
- Bow Thruster: Jastram BU20F(110kW)
- Shore Power: Trafa 380/415 Volts shore transformer (50 Hz)

Batteries:

- 4 x 210 Ah Main Engine (each engine)
- 2 x Generator (each generator)
- 4 x Emergency Generator
- 4 x Service Batteries
- 2 x Radio Batteries

Chargers:

- 2 x Mastervolt Charger MASS 24/50 – Main Engine
- 2 x Mastervolt Charger MASS 24/25 – Generator
- 2 x Mastervolt Charger MASS 24/15 – Emergency Generator
- 2 x Mastervolt Charger MASS 24/50 – Service Batteries
- 1 x Mastervolt Charger MASS 24/25 – GMDSS

Hydraulics:

- Vandriiel HPU for the jet ski crane
- 2 x Rolls Royce HPU for steering
- Van Der Velden HPU for garage door and gangway
- Hydraulic Systems : Tender Davits, Garage door Gangway, Steering

Air Conditioning:

- Heinen & Hopman 3 Units SCW-185 KS each with four compressors
- Cooling capacity : 212 kW (each unit)
- Heating capacity : 80 kW (each unit)
- Air compressor: 2 Kaeser Compressors

- Watermakers: 2 x Idromar IDM7 (300 litres/hour)
- Water Filter: Idromar CT6R1, charcoal filters
- Water boilers: 2 x 300 litres Gianneschi with 2 x 3 kW heater (each boiler)
- UV Sterilizer: Idromar SH 8000
- Toilet System: 2 x Evac vacuum pump
- Sewage Treatment System: Haman M1M3/ Mini I-Frame + Sludge pump
- Fuel Separator: Westfalia OTC
- Oily Water Separator: Bilgemon 488
- Fuel Polishing system: Separ filters



EQUIPMENT

NAVIGATION EQUIPMENT

- Radar (X-band & S-Band): Furuno 2 x FAR2218BB & FAR3230SSB
- Electronic Charts: Furuno ECDIS 2 x FMD Serie 3200
- Navigation Screens: 6 x HATTELLAND 19"
- Gyro Compass: Alphantron 1 x Alphaminicourse V2
- Magnetic Compass: C. Plath, overhead Jupiter type
- Autopilot: Raytheon Pilotstarr D
- Depth Sounder: Furuno 1 x FE 800
- GPS: Furuno 2 x GP 170
- AIS: Furuno 1 x FA 170
- Speed Log: Consilium SAL SD4-3
- AMS: Praxis
- Fog Horn: Kahlenberg Industries

COMMUNICATION EQUIPMENT

- SAT COM: Fleet One Thrane & Thrane
- VHF: 2 x Sailor RT5022
- MF/HF: Sailor HC4500
- UHF: 14 x Icom IC-F2000S
- Intercom: Vingtor Pro-221
- SAT-C: Sailor 6018
- Navtex: Furuno NX-700
- Portal VHF: 2 x ICOM GMDSS DSC IC-GM16000E

DECK EQUIPMENT

- Anchor Winch: Steen, type 19, size 50
- Capstans: 2 x Steen, type 59, size 48
- Anchors: 2 x 360kg galvanised steel HHP
- Anchor Chains: 2 x 192.5m of 22mm stud link chain
- Mooring bollards: 4 on foredeck. 4 on aft deck
- Boat Crane & Davits: 1 x foredeck crane Van Driel of 2000kg,
- Carbon portable crane Van Driel of 500kg max
- Gangway: Van der Velden 5.85m. Teak surfaced and side lit
- Sun deck jacuzzi: Aquademi, 4 person
- Sunbrella & Bimini: 6

MAIN JOBS DONE

- Hull repainted in 2018
- Exterior superstructure repainted in 2023
- 15-year class survey completed in 2023
- QL3+ service performed on main engines in 2024
- Generators overhauled in 2024
- Installation of new navigation equipment in 2024
- AV and IT systems upgraded in 2024
- Installation of Lutron Palladiom lighting control system in 2024
- New exterior upholstery in 2024
- All mattresses renewed in 2024
- Air conditioning system refitted, including replacement of piping, in 2024
- Guest tender fitted with a new engine



EQUIPMENT

ENTERTAINMENT EQUIPMENT

- Starlink: 2 x Maritime Starlink
- VSAT: Sailor Interface Unit 7024A – ACU 7016C
- Bridge Deck Salon: 55" TV – Amp -Apple TV – IPTV
- Sundeck Lounge: TV – Amp -Apple TV – IPTV
- Owners Cabin: 54" TV – Amp -Apple TV – IPTV
- Guest Cabins: 32" 4 x TV – Amp -Apple TV – IPTV
- Crew Mess: 44" TV – Amp -Apple TV – IPTV
- Captain cabin: 54" TV – Amp -Apple TV
- Decoders: Apple TV / Brazilian IPTV Box
- Amplifiers: 6 x Marantz
- Music system: SONOS speakers operated through air play/bluetooth

COOKING & LAUNDRY EQUIPMENT

GALLEY

- 2 x Miele Induction Pro cooktop
- 2 x Miele Pro
- 1 x Samsung microwave
- 1 x Foster fridge
- 1 x Foster freezer
- 1 x Zanussi dishwasher
- 1 x Dumbwaiter from Galley to Sundeck

CREW MESS

- 1 x Whirlpool dishwasher
- 1 x Foster fridge
- 1 x Fridge Corridor Electrolux
- 1 x ice maker Maxima
- 1 x microwave Panasonic
- 1 x Walking Fridge 4.5 cubic metre
- 1 x Freezer KTI Fridina 3 cubic metre

UPPER DECK PANTRY

- 1 x Whirlpool dishwasher
- 1 x Foster fridge
- 1 x Wine Cellar 700 bottles capacity

SUNDECK

- 1 x Vittrifrigo fridge
- 1 x Gaggenau Electric barbecue
- 1 x Hoshizaki ice maker

LAUNDRY

- 3 x Miele Pro PW6065 washing machine
- 3 x Miele Pro PT71 36 dryers



EQUIPMENT

SECURITY & SAFETY EQUIPMENT

SAFETY

- Life rafts: 4 x Survitec 25p
- Life jackets: 28 + 4 for children
- Line throwing appliance: 4
- Immersion survival suit: 28
- Life buoys: 8
- Parachute flare: 12
- Emergency breathing device: 5
- Visual and acoustic alarms in appropriate areas

SECURITY

- CCTV cameras installed on port and stbd main decks, main deck aft, engine room, and water sports store
- Monitoring: Via AV Lantic system

FIRE FIGHTING

- Heat detectors: Galley and laundry
- High pressure water mist: Ultra Fog system fitted in accommodation areas, galley, tech spaces and engine room
- Hoses and hydrants: Placed throughout vessel, as required
- Smoke/heat detectors: Accommodation, machinery spaces and technical areas
- Gas detectors: In water sports and petrol store
- CO2 system: Fitted in Galley
- Fire extinguishers: Powder, CO2 and Foam throughout vessel, as required
- Fire doors: Throughout vessel, as required

TENDERS & WATERSPORTS EQUIPMENT

TENDERS

- Guests: Yachtwerft Meyeroo, jet propulsion 170 Kw, 6.4m for 7 pax
- Rescue Tender: 2019 Ribeye YT600, Outboard Yamaha engine 115 HP, 6.8m

WATER SPORTS

- 2 x Jet Ski Seadoo GTI / GTR, Rotax 1630 ACE, 230 HP

OTHER WATER TOYS

- 2 x Seabobs
- 6 x Complete Diving Gears (Tank, Jackets, Regulators, ...)
- Diving Compressor Bauer Junior 6m3
- 3 x Kayak
- 1 Paddle
- Snorkelling kits and swimming equipments
- 1 Wakeboard, 2 Waterski pairs





For more information, [CLICK HERE](#)





CORNELIUS KISTLER

Founder bY.s

 WHATSAPP ME

m. +41 79 702 7000

ck@breezeyachting.swiss



EMMA KARANOVA

Yacht Advisor

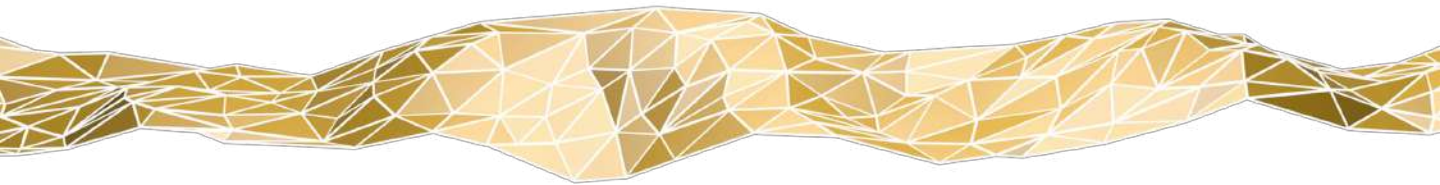
 WHATSAPP ME

m. +41 79 702 7262

emma@breezeyachting.swiss

breezeYachting.swiss

WE SPEAK YACHTING. LET'S TALK.



Switzerland ● Malta ● Spain ● Monaco ● St. Tropez

www.breezeyachting.swiss

DISCLAIMER

The company offers the details of this vessel in good faith but cannot guarantee or warrant the accuracy of this information nor warrant the condition of the vessel. A buyer should instruct his agents, or his surveyors, to investigate such details as the buyer desires validated. This vessel is offered subject to prior sale, price change or withdrawal without notice.