

breezeYachting.swiss



AZIMUT Grande 35 Metri 'SAMA'

€7'950'000 excl. VAT | 34.64m | 2017

KEY POINTS

- Big volume for 35m planning yacht of 269 GT
- Beach Club
- Fold out balcony in Owners Cabin
- Sky Deck (additional Deck, not all 35m Azimut have this)
- Jacuzzi on Bow
- Lateral side garage for tender (tender included)

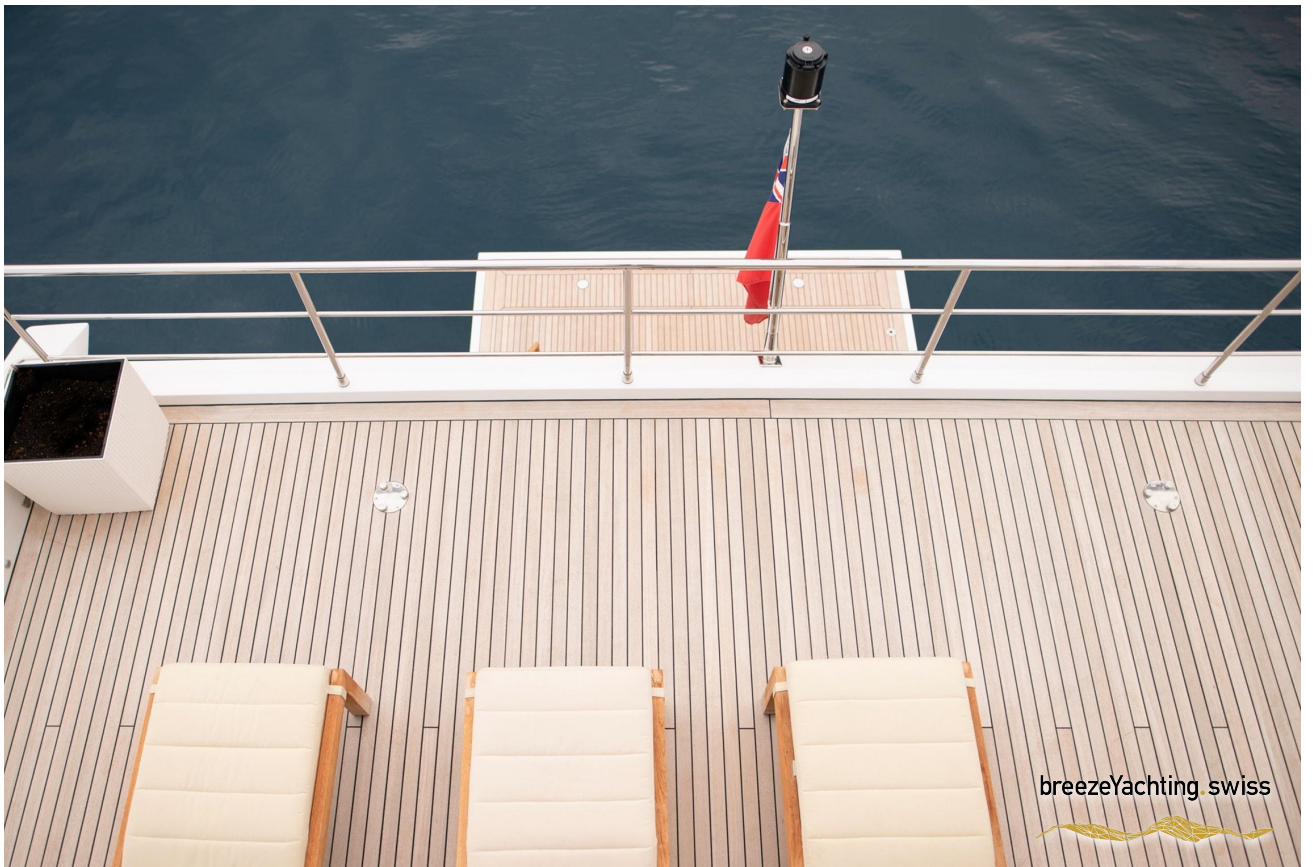


SPECIFICATIONS

Builder:	Azimut
Model:	Grande 35M
Year:	2017
Model Year:	2018
Hull/Superstructure:	GRP
Deck material:	Teak
Class:	RINA - Pleasure yacht
Exterior Designer:	Stefano Righini
Interior Designer:	Achille Salvagni
Flag:	Jersey
Location:	Cannes, France
Length overall:	34.64 m
Beam:	7.50 m
Draft:	4.14 m
Gross Tonnage:	269 GT
Guests:	10
Staterooms:	5
Crew:	6
Crew Cabins:	3
Engines:	2 x MTU 16V2000
Total Power:	4800 Hp
Engine Hours:	1600 h (28.09.2025.)
Generators:	2 x Kohler 55 kW
Generator Hours:	2500 h (28.09.2025.)
Stabilizer:	Trim Tabs, Zero Speed Stabilizers
Cruising Speed:	18 knots
Maximum Speed:	25.5 knots
Range:	568 nm @ 18 knots
Fuel Consumption:	561 l/h
Fuel Tank:	18000 L
Fresh water:	30000 L







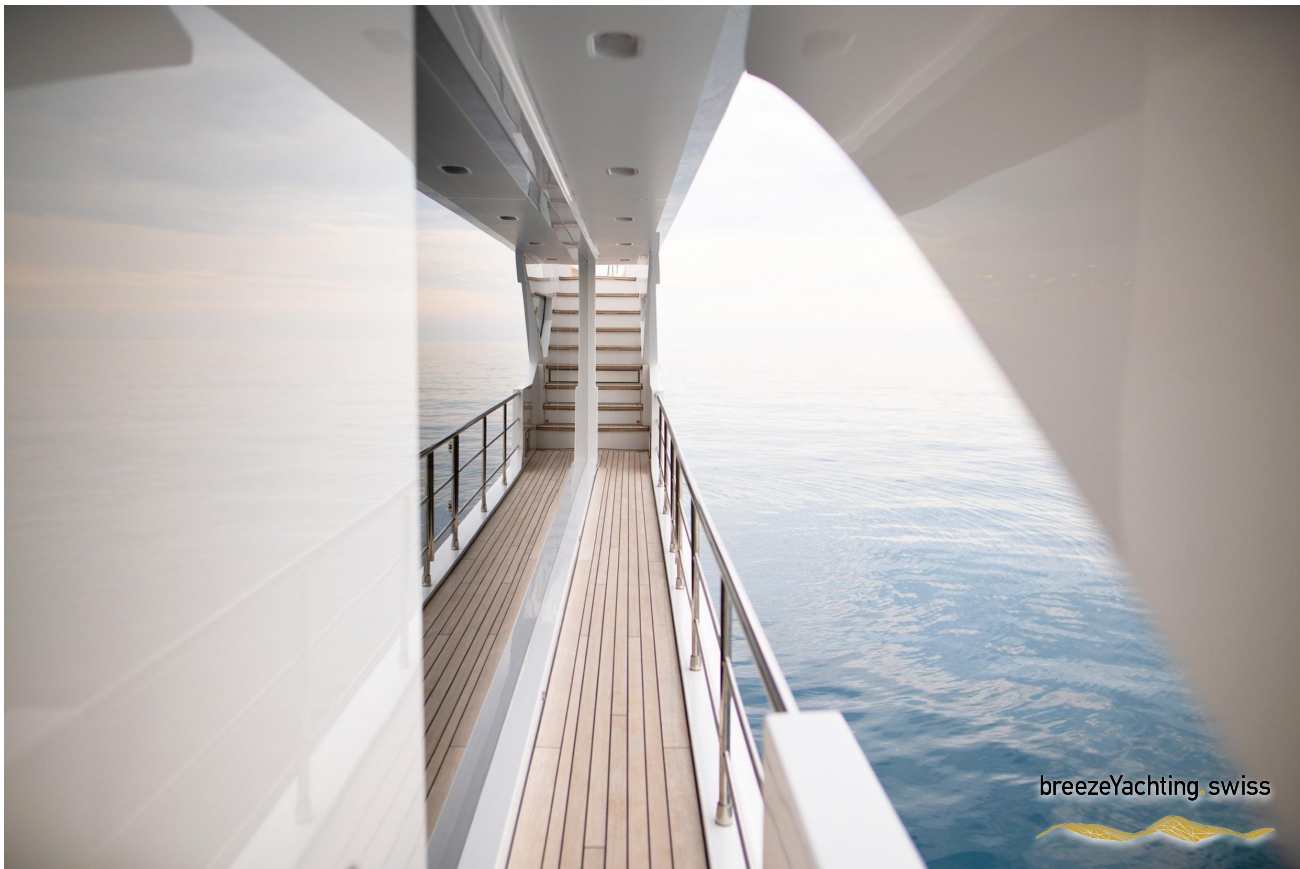






breezeYachting.swiss







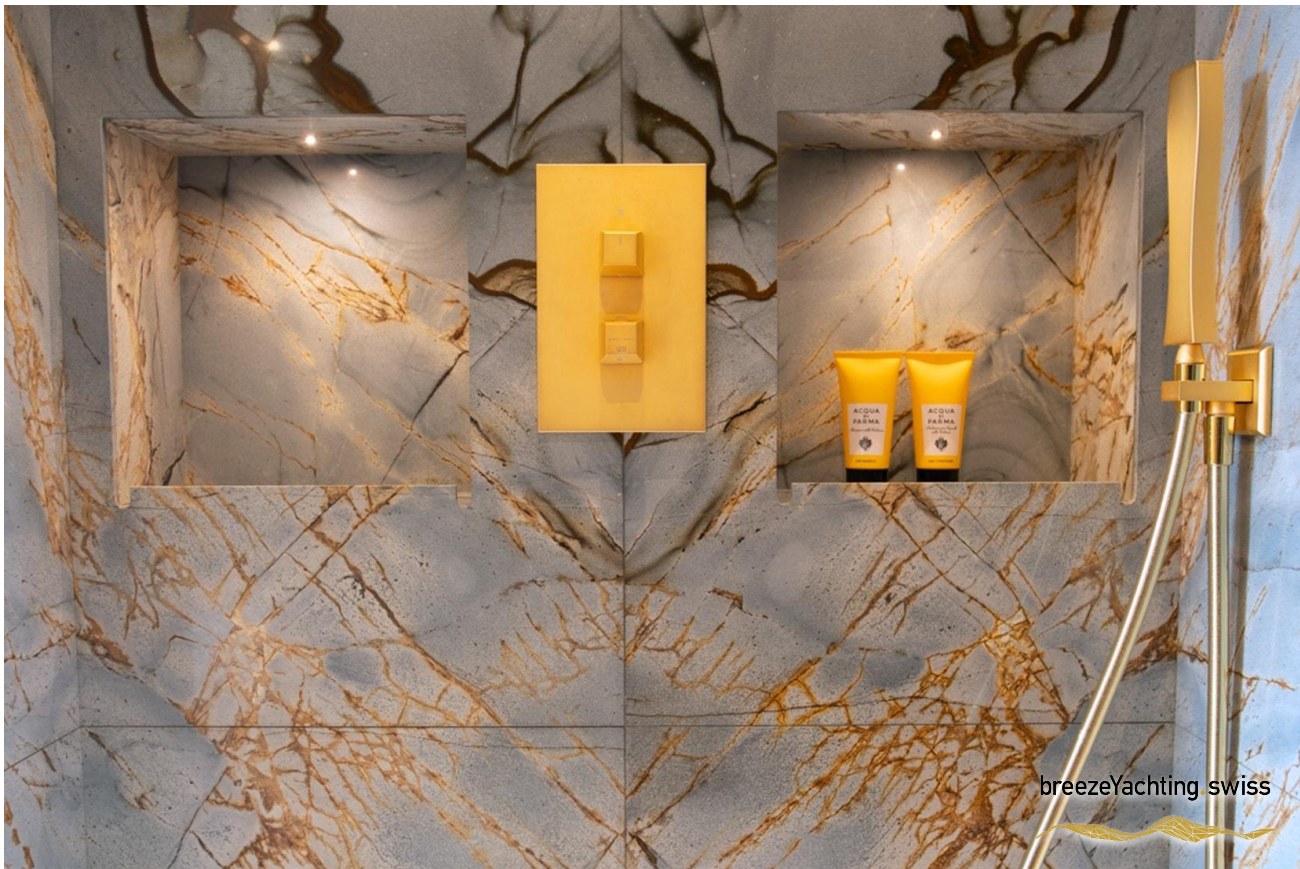
breezeYachting swiss







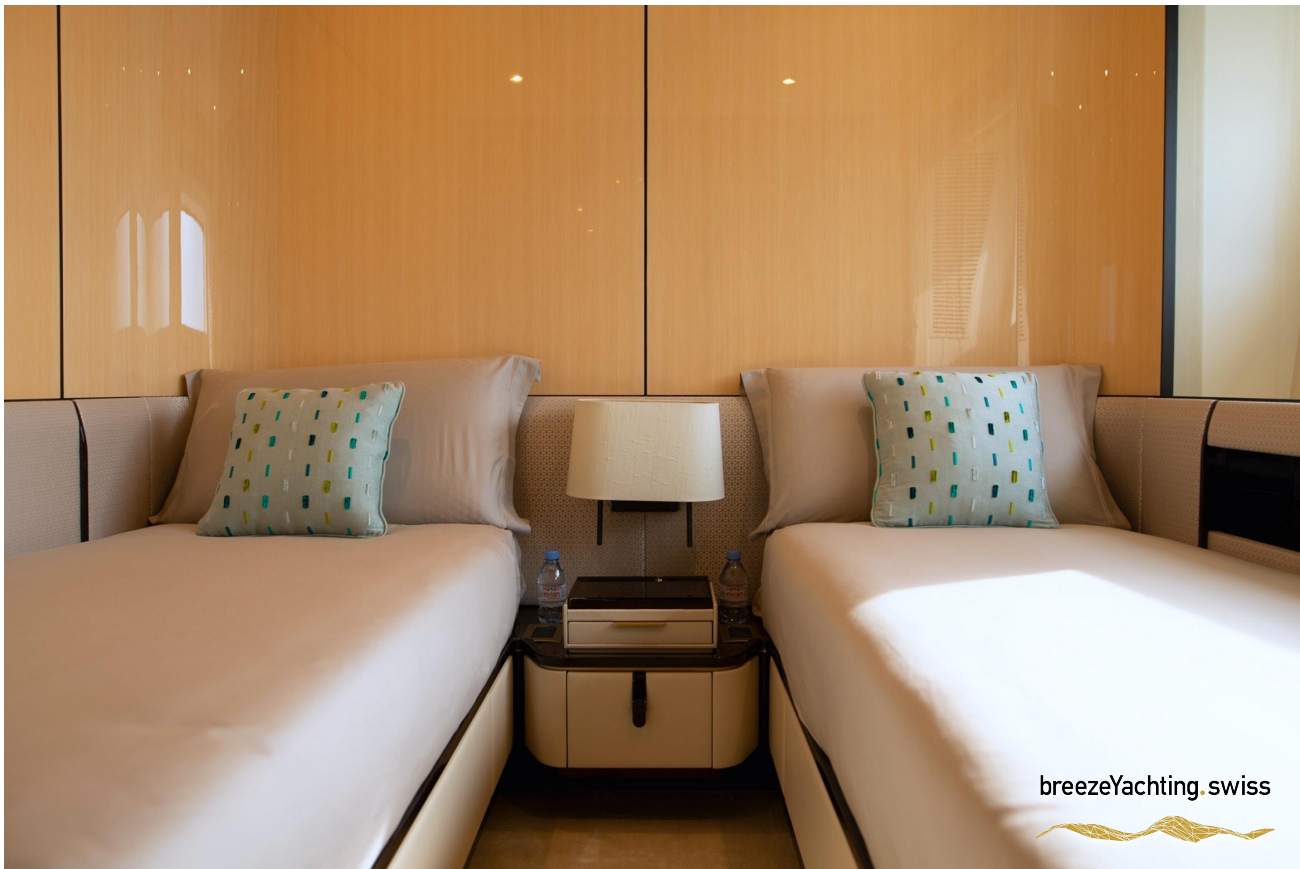




breezeyachting swiss







EXTRAS

MACHINERY

- Main Engines: 2 x MTU 16V2000 (1790 KW)
- Engine Hours: 1600h (date 28.09.2025)
- Gear Box: ZF 3000
- Drive: Shaft Drive
- Air Conditioner Type
- Climma CWS 3603 RC
- Watermakers
- 2x hydromar MC3J 125L/h each
- Trim Tabs- Stabilizers
- CMC marine stabilis Electra
- Bow Thrusters
- CMC marine dualis electra BTM 60EA-52
- Steering System
- 2x Marellimotori monitoring "world yachts"
- Fuel Separator & Filtration
- Raccor parker

DECK EQUIPMENT

- Anchor Wind Glass: Orvea model italwinch
- Aft Warping Capstan: Orvea model italwinch
- Anchor: 110 KG
- Anchor Chains: PS 4 shackles ; SB 4 shackles
- Boat Crane & Davits: Pin craft
- Passerelle: Pin craft
- Swimming Platform: Portable

TENDERS & TOYS

- Tenders: Williams Sport Jet 460
- Dive Gear: 1 set
- Recreation: Seadoo RXT-X 300
- Water Toys: 3-seater Inflatable Kayak, Jobe towing ring
- Masks and snorkels



EXTRAS

NAVIGATION & COMMUNICATION

- Radars: Furuno
- Magnetic Compass: Yes
- Auto Pilot: Furuno
- Depth Sounder: Yes
- GPS: Furuno
- Plotter: Maxsea
- SATcom: Starlink
- VHF: 2 x Furuno
- Intercom: Raymarine
- SART
- EPIRB
- 2 VHF PORTABLE plus 1 in the tender

ENTERTAINMENT SYSTEM

- Audio Equipment: Bose
- Video Equipment: Bose
- Cabin Equipment: Mirror TV

GALLEY & LAUNDRY

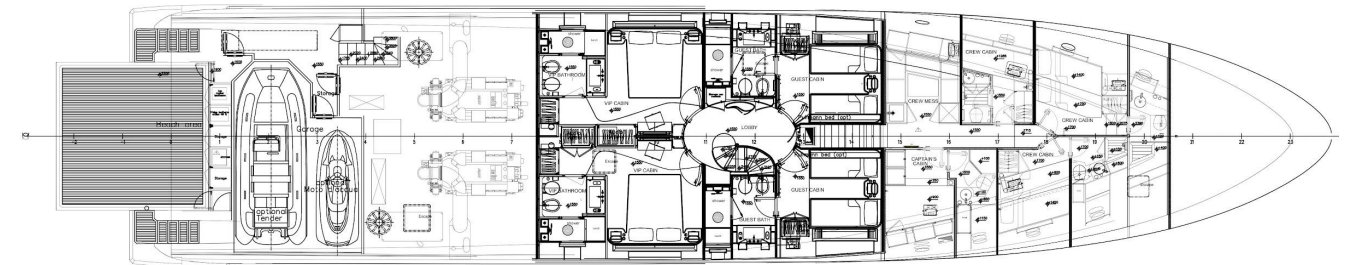
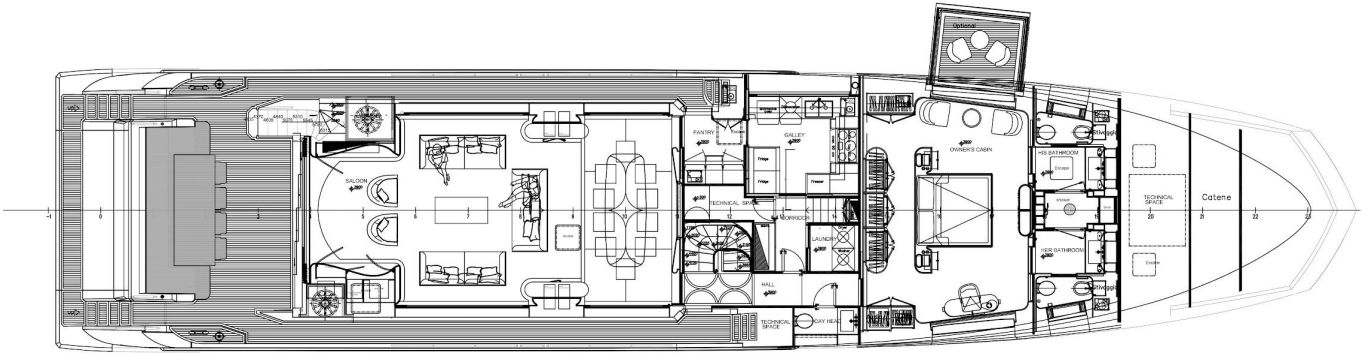
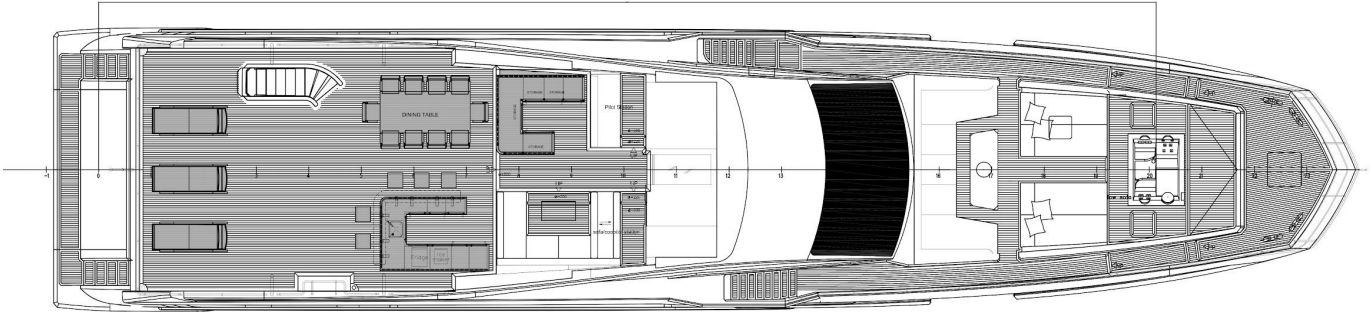
- Cooking Equipment: Miele
- Refrigerator/Freezer: 2 Refrigerators + 1 Freezer Liebherr
- Washing Machine/Dryer: Miele
- New Dishwasher Miele in Crew mess

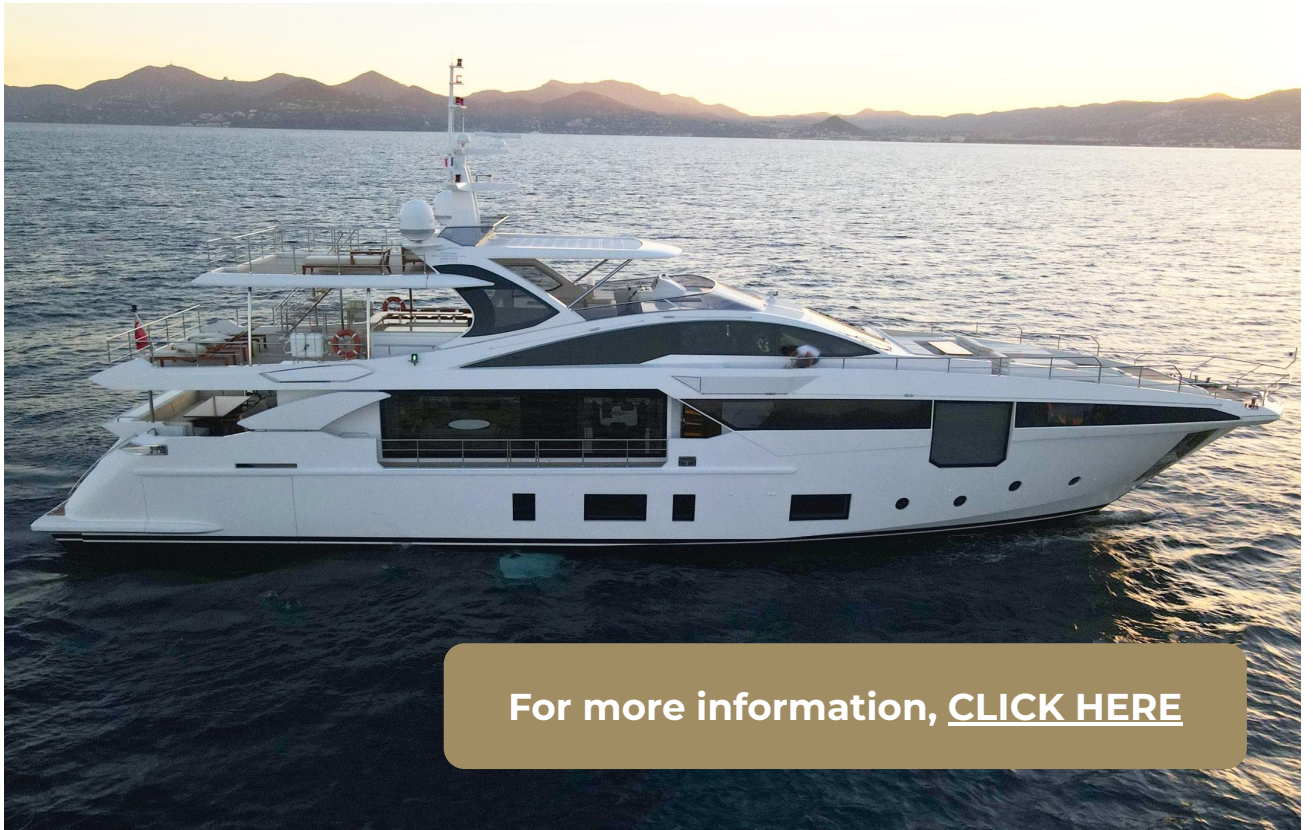
SAFETY EQUIPMENT

- Life Rafts: 2x EV ISO 9650 10 persons
- Life Rings: 2 with LIGHT on line
- Epirbs: Ocean Signal ARH 100
- Medical Equipment: Defibrillator
- Fire Control System: Consilium
- Fire Extinguishers: 29 (Powder, Water, CO2)
- 2 Complete firefighter bags with 2 BA and 2 bottles

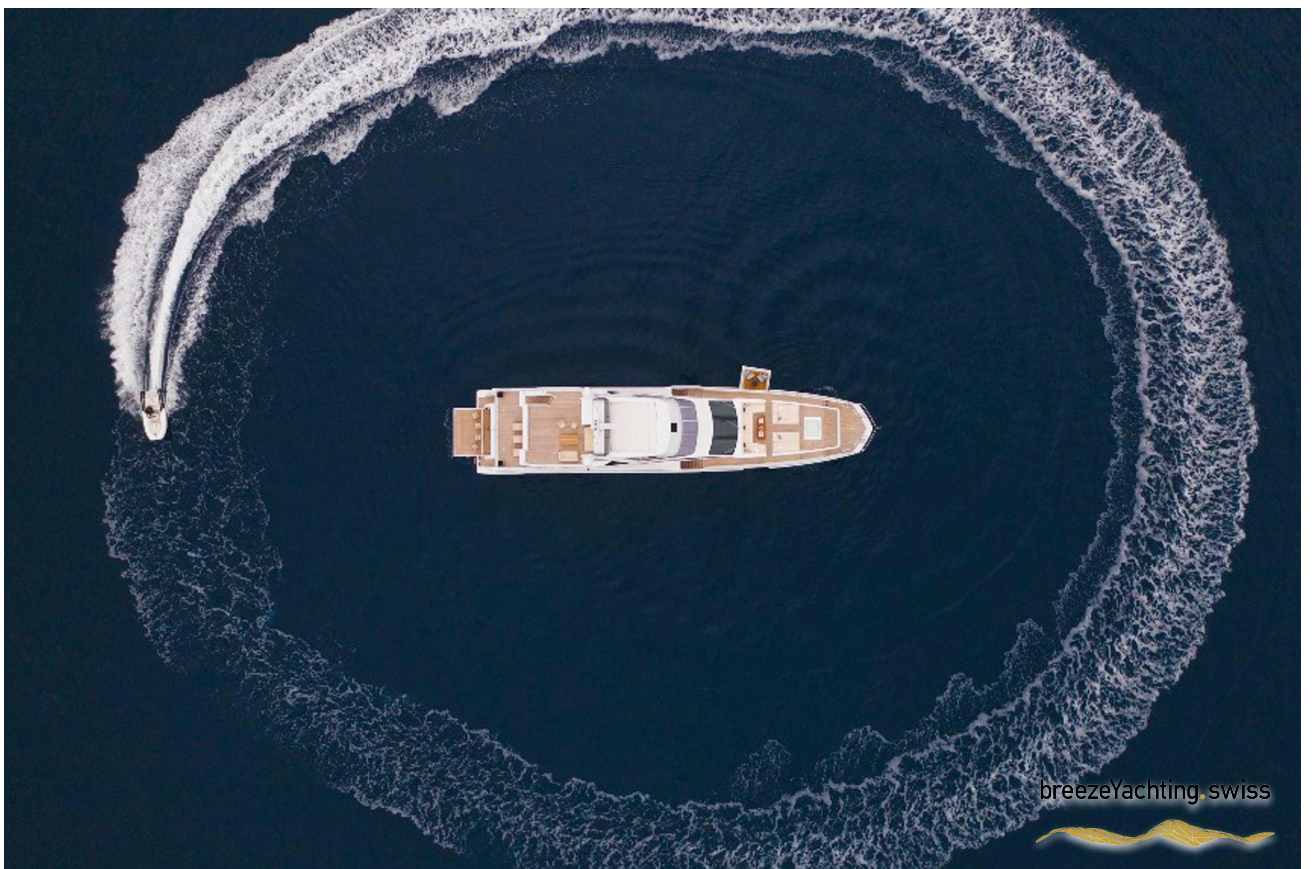


LAYOUTS





For more information, [CLICK HERE](#)



breezeYachting.swiss





CORNELIUS KISTLER

Founder & CEO

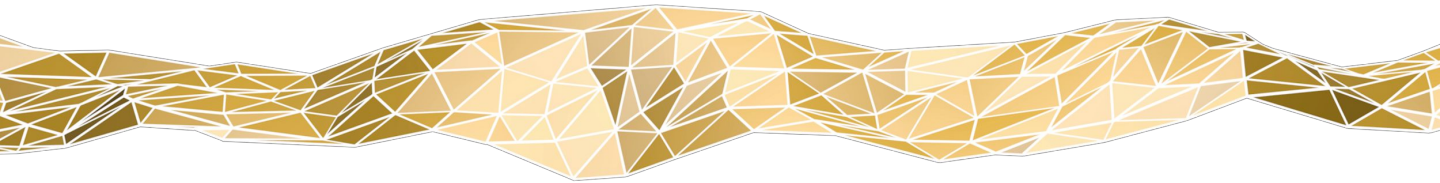
 WHATSAPP ME

m. +41 79 702 7000

ck@breezeyachting.swiss

breezeYachting.swiss

WE SPEAK YACHTING. LET'S TALK.



Switzerland ● Malta ● Spain ● Monaco ● St. Tropez

www.breezeyachting.swiss

DISCLAIMER

The company offers the details of this vessel in good faith but cannot guarantee or warrant the accuracy of this information nor warrant the condition of the vessel. A buyer should instruct his agents, or his surveyors, to investigate such details as the buyer desires validated.

This vessel is offered subject to prior sale, price change or withdrawal without notice.