

breezeYachting swiss



Azimut 66 Fly 'TAMARA II'

€1'500'000 excl. VAT | 20.8m | 2018

Meet the 2018 Azimut 66 Fly “Tamara II,” a beautifully designed motor yacht that balances comfort and performance. This vessel is a great choice for families or small charter groups looking to enjoy unforgettable experiences on the water. With its elegant lines and inviting profile, “Tamara II” is an excellent option for your next nautical adventure.

Step inside to find a welcoming saloon that serves as the central gathering area for guests. The open layout seamlessly connects the living area to the galley, creating a relaxed environment for socializing. Large windows fill the interior with natural light, enhancing the bright and airy atmosphere.

“Tamara II” accommodates up to eight guests across four cabins: a full-beam master suite, a VIP cabin, a twin cabin, and a bunk room. Three heads are available, with one shared between the twin and bunk cabins, ensuring ample facilities for everyone on board.

The spacious flybridge is a standout feature, offering a second helm station for easy navigation. With ample seating and a generous table for al fresco dining, this area is perfect for entertaining guests. A grill adds to the appeal, making it an ideal space to gather and enjoy the views.



SPECIFICATIONS

Builder:	Azimut
Model:	66 FLY
Year Built:	2018
Hull/Superstructure:	Carbonfiber + GRP
Deck material:	Teak
Interior Design:	Stefano Righini
Flag:	Croatia
Length overall:	20.8 m
Registered Length:	20.33 m
Beam:	5.23 m
Draft:	1.6 m
Gross tonnage:	65.83 GT
Displacement:	41.65 T
Guests:	8
Staterooms:	4
Heads	3
Crew:	2
Crew cabins:	1
Engines:	2 x CAT C18
Total Power:	2300 HP
Generators:	7 kW
Cruising Speed:	28 knots
Maximum Speed:	32 knots
Range:	290 nm
Fuel tank:	3.900 l
Fresh water tank:	1000 l
Black water tank:	550 l
Tender:	Sea-Doo Jet Ski



KEY POINTS

- Spacious interior
- 28 sq.m flybridge
- Hydraulic platform
- Great for charter



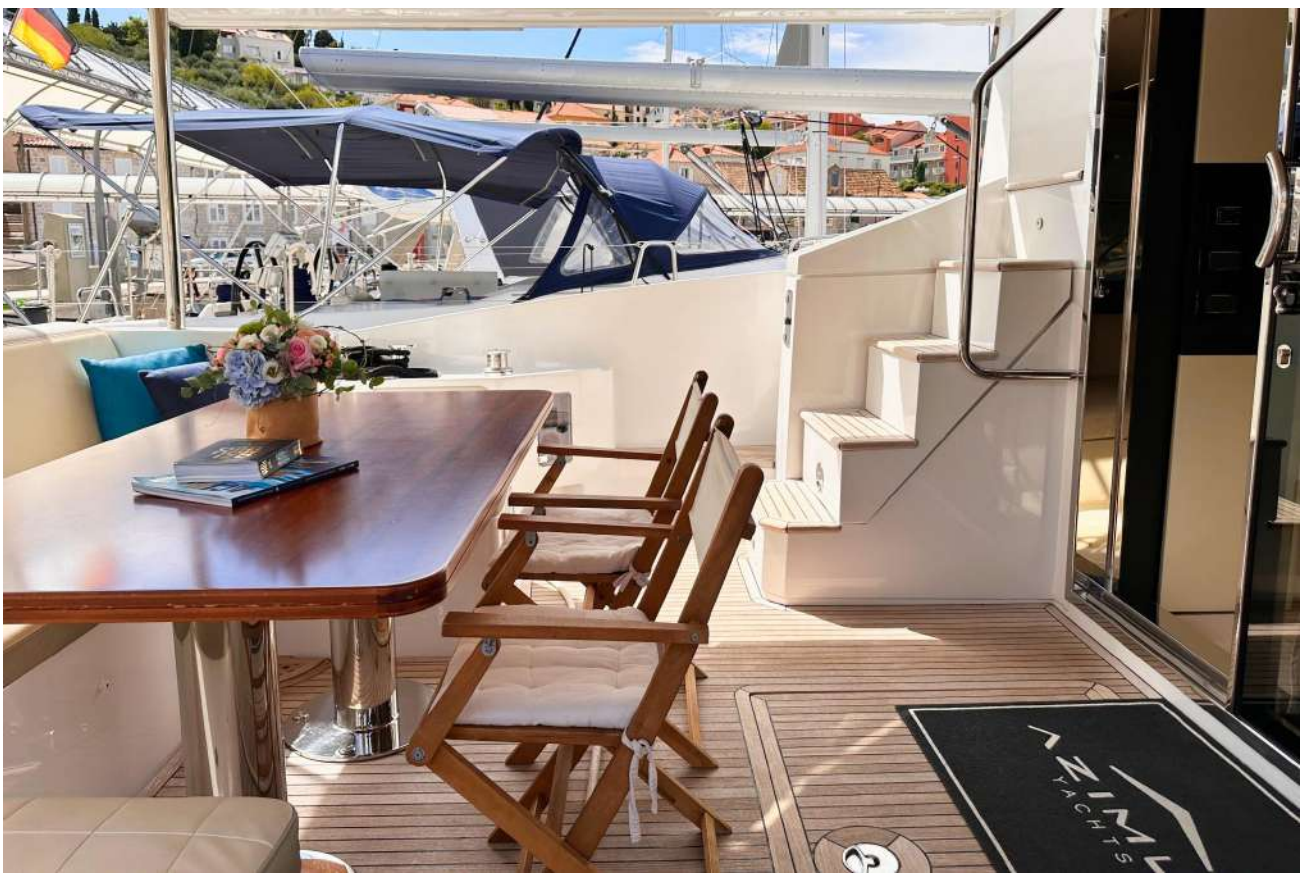










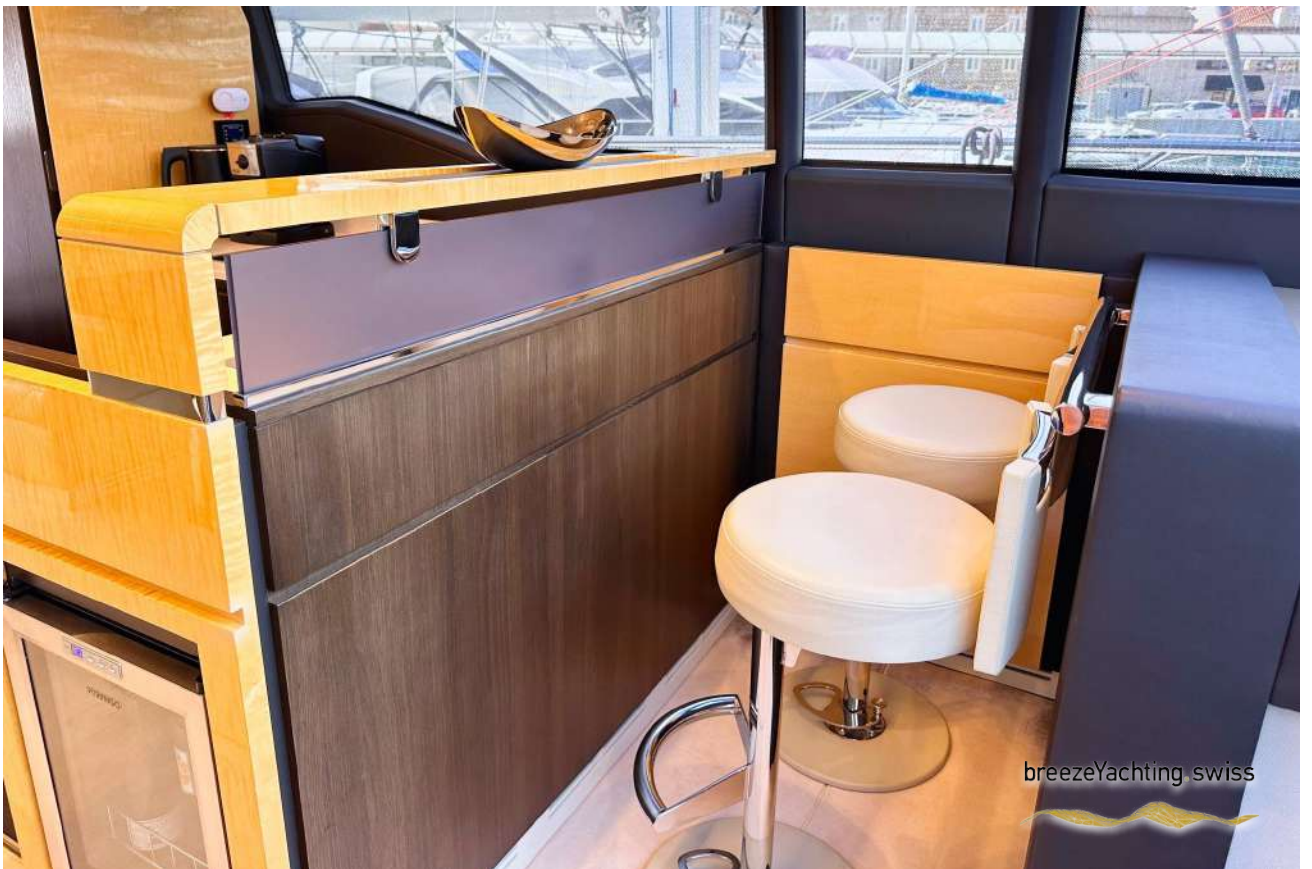














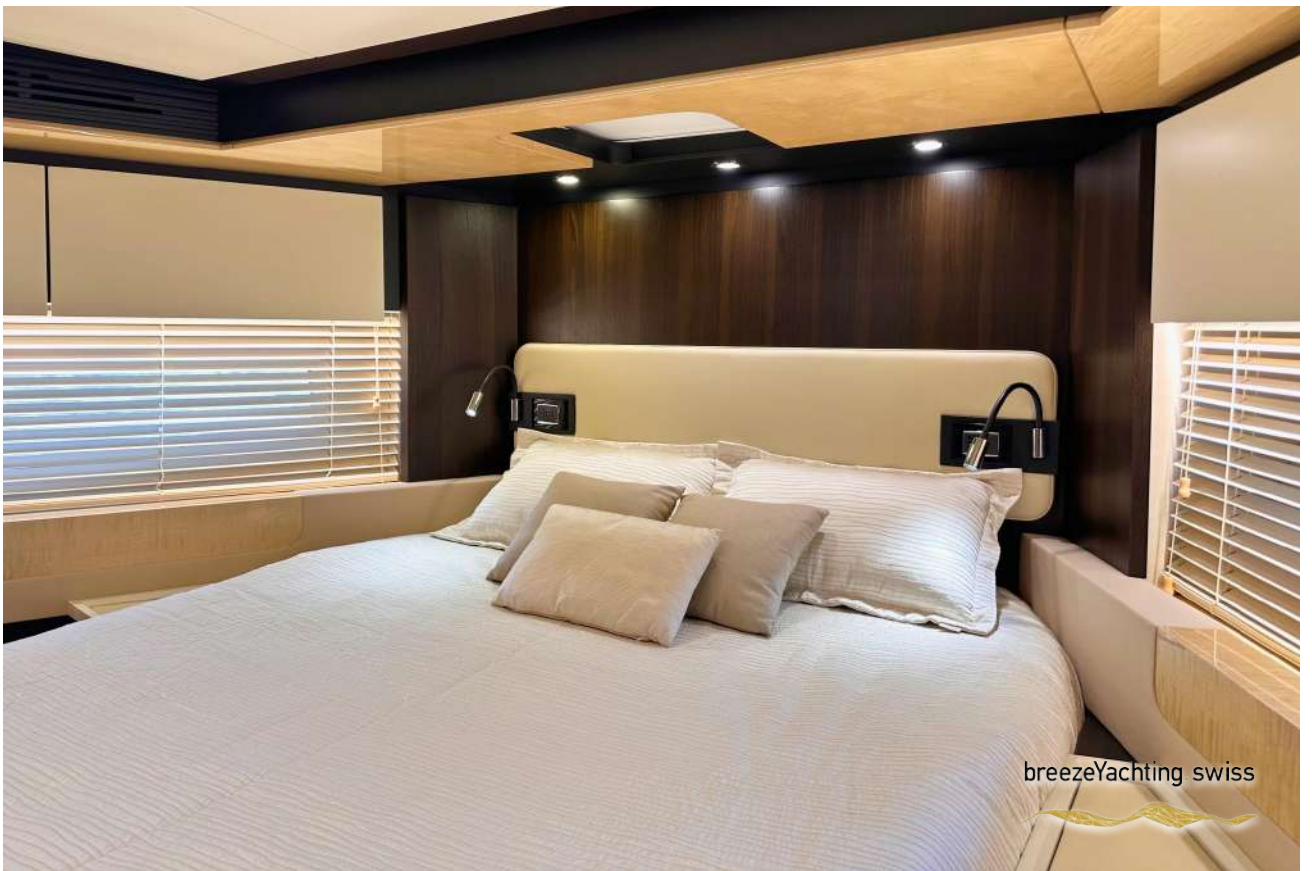


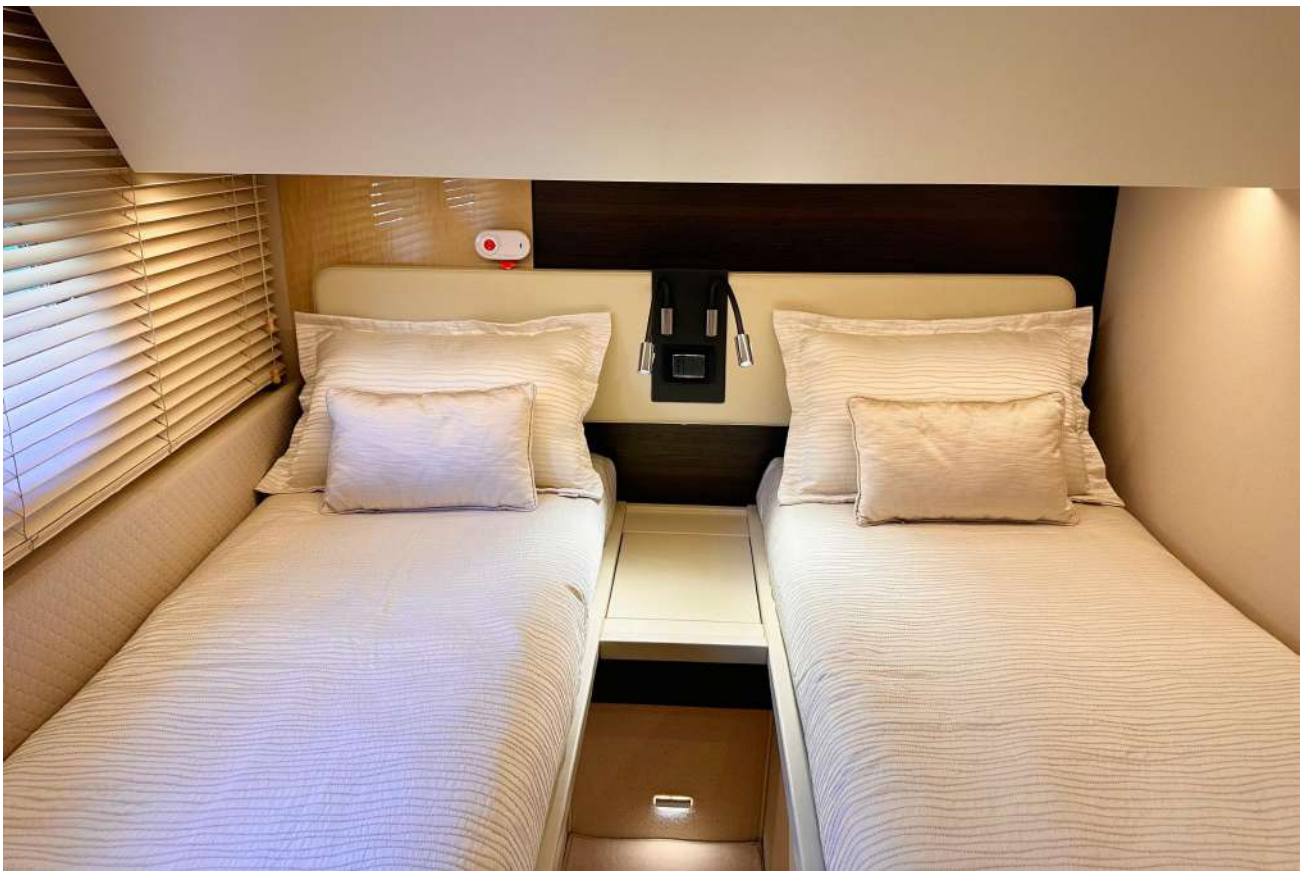
breezeYachting-swiss











EQUIPMENT

Mechanical

- Air Conditioning
- Bow Thruster
- Fire/Bilge Pump
- Swimming Platform: Hydraulic
- Anchor Windlass: Electric

Electrical

- Shore Power: Inlet (2 x 230V, 50Hz)
- Batteries: 10 x 90Ah 24V

Navigation

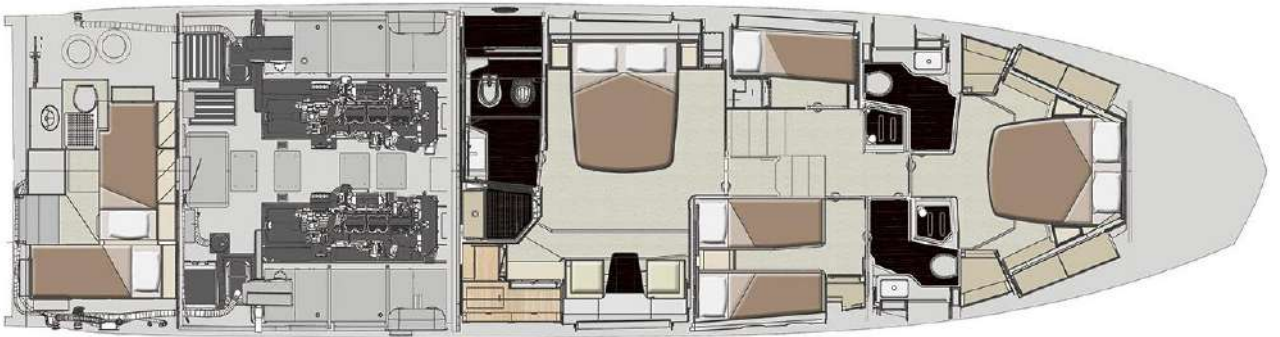
- Autopilot: RAYMARINE
- GPS: RAYMARINE
- Magnetic Compass
- Radar
- Depth Sounder: RAYMARINE
- Chart Plotter: RAYMARINE
- Searchlight

Galley

- Cooking Equipment: 1 x Miele Stove, 1 x Miele Oven
- Microwave
- Extractor Fan
- Dishwasher
- Refrigerator
- Freezer



LAYOUTS







INNA VOLOSHINA

Yacht Advisor

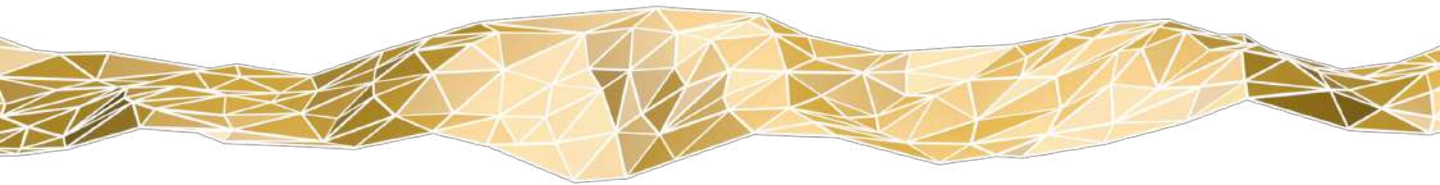
 WHATSAPP ME

m. [+34 603 475 840](tel:+34603475840)

iv@breezeyachting.swiss

breezeYachting.swiss

WE SPEAK YACHTING. LET'S TALK.



Switzerland ● Malta ● Spain ● Monaco

www.breezeyachting.swiss

DISCLAIMER

The company offers the details of this vessel in good faith but cannot guarantee or warrant the accuracy of this information nor warrant the condition of the vessel. A buyer should instruct his agents, or his surveyors, to investigate such details as the buyer desires validated.

This vessel is offered subject to prior sale, price change or withdrawal without notice.