

# M/Y WAVE

AZIMUT GRANDE 27M



M/Y WAVE, Azimut Grande 27m is a sporty-looking, modern 26.78m (87'86") luxury vessel built in Italy by Azimut Yachts and launched in 2019. Her inviting interiors were created by Salvagni Architetti, with the exteriors by Stefano Righini. She can sleep up to 10 guests in 5 cabins. She is also capable of carrying up to 4 crew onboard to ensure a relaxed luxury yacht experience.

#### KEY FEATURES:

- 10 guests in 5 ensuite cabins
- Huge front deck exterior lounge
- Beautiful beach club
- Large volume for a size
- Flybridge wet bar
- Choice of lounging and dining areas
- Industry-renowned interior and exterior designer
- Cutting edge technology
- Maximum speed of 27 knots
- Shallow draft of 1.9m/6.4ft to navigate shallow waterways



WAVE AZIMUT GRANDE 27



WAVE AZIMUT GRANDE 27



WAVE AZIMUT GRANDE 27



EXTERIORS  
WAVE



BOW



FLYBRIDGE



FLYBRIDGE AFT



FLYBRIDGE BAR



FLYBRIDGE LOUNGE

# FLY BRIDGE HELM



MAIN DECK AFT





BEACH CLUB



WAVE AZIMUT GRANDE 27

The image shows the interior of a yacht, featuring a living area with a light-colored sectional sofa, a round coffee table, and two armchairs. The dining area is visible in the background with a table and chairs. Large windows provide a view of the sea and a coastline. The ceiling has recessed lighting and speakers. The overall design is modern and elegant.

# INTERIORS WAVE

SALOON





GALLEY



WAVE AZIMUT GRANDE 27

## GUEST ACCOMODATION

WAVE offers guest accommodation for up to 10 guests in 5 suites comprising a full beam master suite located on the main deck, two double cabins and two twin cabins on the lower deck. There are 7 beds in total, including 1 king, 2 queen and 4 singles.



MASTER CABIN



WAVE AZIMUT GRANDE 27



DOUBLE CABIN



TWIN CABIN



WAVE AZIMUT GRANDE 27



## OVERVIEW

TYPE	MOTOR YACHT
BUILDER	AZIMUT YACHTS
MODEL	GRANDE 27M
YEAR	2019
FLAG	MALTA
EXTERIOR STYLING & CONCEPT	STEFANO RIGHINI
INTERIOR DESIGNER	ACHILLE SALVAGNI ARCHITETTI

## DIMENSIONS

LENGTH	26,78M ( 87' 10")
BEAM	6,59M (21' 7")
DRAFT	1,9M (6' 4")

## ACCOMMODATION

GUESTS SLEEPING	10
GUESTS CRUISING	12
CABINS TOTAL	5
CABINS CONFIGURATION	1 MASTER, 2 DOUBLE AND 2 TWIN
CREW	4

## CONSTRUCTION

HULL MATERIAL	CARBON FIBER + GRP
---------------	--------------------

## ENGINES

MODEL	2 X MAN R V12 1900 MHP
-------	------------------------

## PERFORMANCE & CAPABILITIES

CRUISING SPEED	22 KNOTS
TOP SPEED	27 KNOTS

## TANK CAPACITY

FUEL CAPACITY	9000 L (2377 US GAL)
WATER CAPACITY	2000 L (528 US GAL)

## TENDER & TOYS

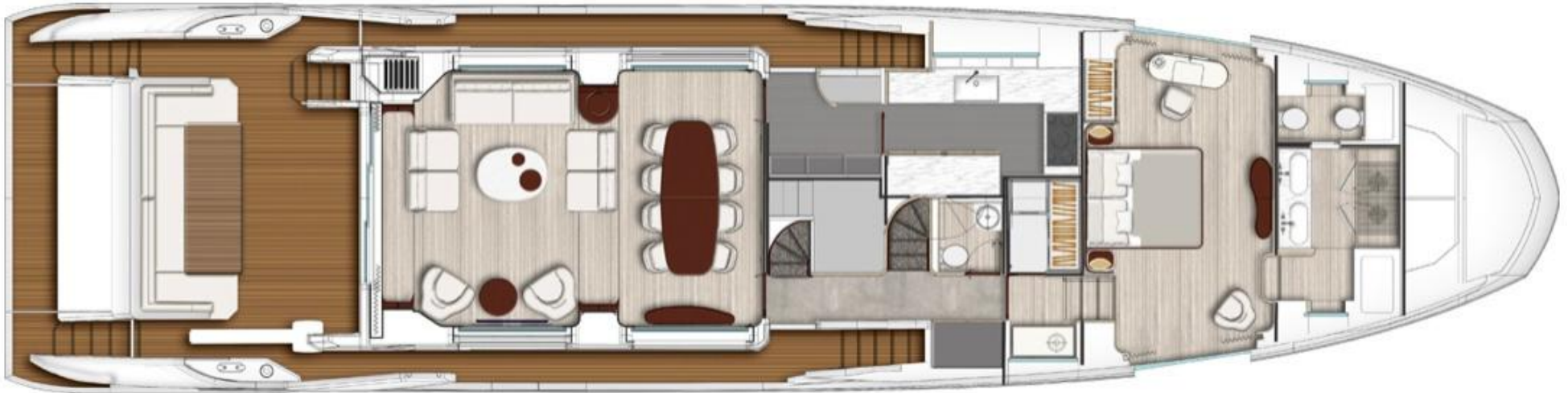
TENDER WILLIAMS 345 TURBOJET - 6 PAX
2 X PADDLE BOARDS
3 X SEABOBS
1 X FLITE BOARD

# LAYOUTS



FLYBRIDGE

# LAYOUTS



MAINDECK

# LAYOUTS



LOWERDECK - 5 CABINS LAYOUT (OPT)

# LAYOUTS



WHEEL HOUSE



# M/Y WAVE

AZIMUT GRANDE 27M