

breezeYachting.swiss



Cheoy Lee Expedition 90 'DOUBLEYOU'

€2'200'000 excl. VAT | 27.4m | 1999/2020

Doubleyou is a 1999 Cheoy Lee Expedition 90 and was actually the only model ever built with Tom Fexas Yacht Design as the naval architect.

The Yacht had an extensive refit in Indonesia in 2020 which focused mainly on the Salon, Bridge, sky lounge and guest cabins. The upgraded styling gave a modern twist to the yacht's otherwise classic look.

Doubleyou is a big-volume yacht for the size. Bult from GRP she has a proper tri-deck layout with a lovely open-style bow that carries the tender and toys.

This Yacht is the perfect solution for an owner wishing to do extensive, long-distance cruising and exploration with a range in excess of 4000 Nautical miles.

Doubleyou can accommodate nine guests in four staterooms. The cabins are separated with the Master and VIP in the aft section and accessible by a companionway. Both of these cabins are full-beam with ample storage available.

The two guest cabins are located midships with twin berths. The starboard cabin has a Pullman berth to allow three people to sleep comfortably. There is crew accommodation for three who are accommodated with two crew cabins that are on the lower deck and accessed by way of the galley.

Doubleyou is being sold in "Ready to go" condition and lying in Phuket and available for any potential viewings. Please contact us for more details.



KEY POINTS

- True sub-30m tri-deck explorer yacht with very large internal volumes (158GT)
- Hydraulic stabilizers and hydraulic bow thruster
- Full-beam master and VIP cabins with dedicated companionway from salon
- Large and well-equipped bridge with access to side decks and Portuguese bridge
- Wide open foredeck with crane and mast and ample space for tenders and toys
- Full displacement yacht with 4300nm range at 10 knots
- Twin Northern Lights generators
- Atlas Shorepower converter



SPECIFICATIONS

Builder:	Cheoy Lee
Model:	Cheoy Lee Expedition 90
Year Built:	1999
Refit:	2020
Hull/Superstructure:	GRP
Deck material:	Teak
Class:	Expedition
Exterior Design:	Tom Fexas Yacht Design
Interior Design:	Melody Savio
Flag:	Singapore
Length overall:	27.4 m
Beam:	6.6 m
Draft:	2.2 m
Staterooms:	4
Guests:	9
Crew:	4
Crew Cabins:	2
Engines:	2 x Caterpillar 3406E 600 HP
Engine Hours (03/2024):	10703 / 10758 h
Total Power:	1200 HP
Generators:	2 x Northern Lights 40Kw / 60hz
Generator Hours (07/2022):	5500 / 1803 h
Cruising Speed:	10 kn
Maximum Speed:	14 kn
Range:	4300nm @ 10kn
Fuel tank:	18000 l
Fresh water tank:	5000 l





breezeYachting swiss





breezeYachting.swiss







breezeYachting swiss







EXTRAS

MECHANICAL

- 2 x Caterpillar 3406E engines. 10,703hrs / 10,758hrs (March 2024)
- TwinDisc gearboxes and electronic controls
- 2 x Northern Lights 40Kw / 60hz generators. Portside genset is original with estimated 5500hrs+. Stbd genset installed in 2019 with 1803hrs (July 2022)

ENGINE ROOM

- Naiad Marine central hydraulic system for bow thruster and stabilizing system.
- Central system hydraulic pump plus emergency backup fitted
- PTO's fitted to gearboxes and stbd generator.
- Additional hydraulics for steering and passerelle

ELECTRICAL SYSTEM AND EQUIPMENT

- Power sources via Shore Power / 2 x Generators / 2 x Inverters
- Voltage indicated as 60Hz as opposed to 50Hz
- Glendenning Cablemaster system
- 1 x Atlas shore power converter
- 1 x Xformer shore power converter
- 2 x Mastervolt inverter/charger 24V/3000W
- 1 x Snadi inverter 24V/2000W
- MarineAir reverse cycle air-conditioning
- Ariston 230V water boiler
- 24V DC system on board.
- 1 x Charles 12V 30A battery charger
- 1 x Charles 24V 60A battery charger
- Sea Recovery watermaker 340L/hr (4949hrs)
- Sea Recovery watermaker 340L/hr (2259hrs)



EXTRAS

AUDIO & VISUAL EQUIPMENT

- 1 x large TV in upper deck skylounge. TV input from Apple TV.
- Sound from Denon home theatre
- Medium sized TV in crew area

NAVIGATIONAL ELECTRONICS

- 1 x Ritchie magnetic compass
- 1 x Furuno satellite compass
- 2 x Furuno NavNet3D displays
- 1 x Furuno GP-39 GPS/Plotter
- 1 x Furuno DFF1 network sounder
- 1 x Furuno DRS6A 96nm open array radar scanner
- 1 x B&G wind instrument
- 2 x Icom IV-M602 VHF radios at helm
- 1 x Standard VHF in crew area
- 1 x Simrad AP22 Autopilot
- 1 x Furuno PA170 AIS

GALLEY

- Professional looking galley with stainless steel worktops
- All galley equipment in working order.
- Original LPG system removed and replaced with new electric units. No cooking gas on board.
- 1 x Teka electric stove
- 1 x Teka electric oven
- 1 x Frigidaire microwave
- 1 x Miele dishwasher
- 1 x KitchenAid garbage compactor
- 1 x 220V Samsung 2 door fridge/freezer
- 1 x 220V GEA deep freezer (in pantry)



EXTRAS

INTERIOR

- Saloon and galley on main deck. Guest cabins on lower deck midship; crew cabins forward. Wheelhouse and skylounge on upper deck.
- Modern looking interior with woodwork and soft furnishings in light, neutral colors.
- Interior fully air-conditioned. Adequate natural ventilation from opening doors, windows and portlights.
- Two guest cabins midship; total 5 berths. Aft section with full beam VIP stateroom and owners stateroom.
- All cabins well appointed with adequate storage.
- All cabins have en-suite bathrooms. Day head adjacent to main deck saloon.
- The vessels interior is tastefully finished, free of damage and presents very well.

SAFETY

- General Alarm / PA system
- 2 x 6 person inflatable rafts in GRP containers. Last inspected June 2022
- Flare kit provided
- 2 x EPIRB
- 1 x SART (battery expired)
- First Aid Kit

TOYS AND TENDERS

- Sea-Doo GTX-IDF 230
- 2019 Highfield 2.90m Aluminium RIB with Mercury 5HP outboard engine
- 2022 Cholamark 5.50m centre console RIB with Suzuki 60HP engine

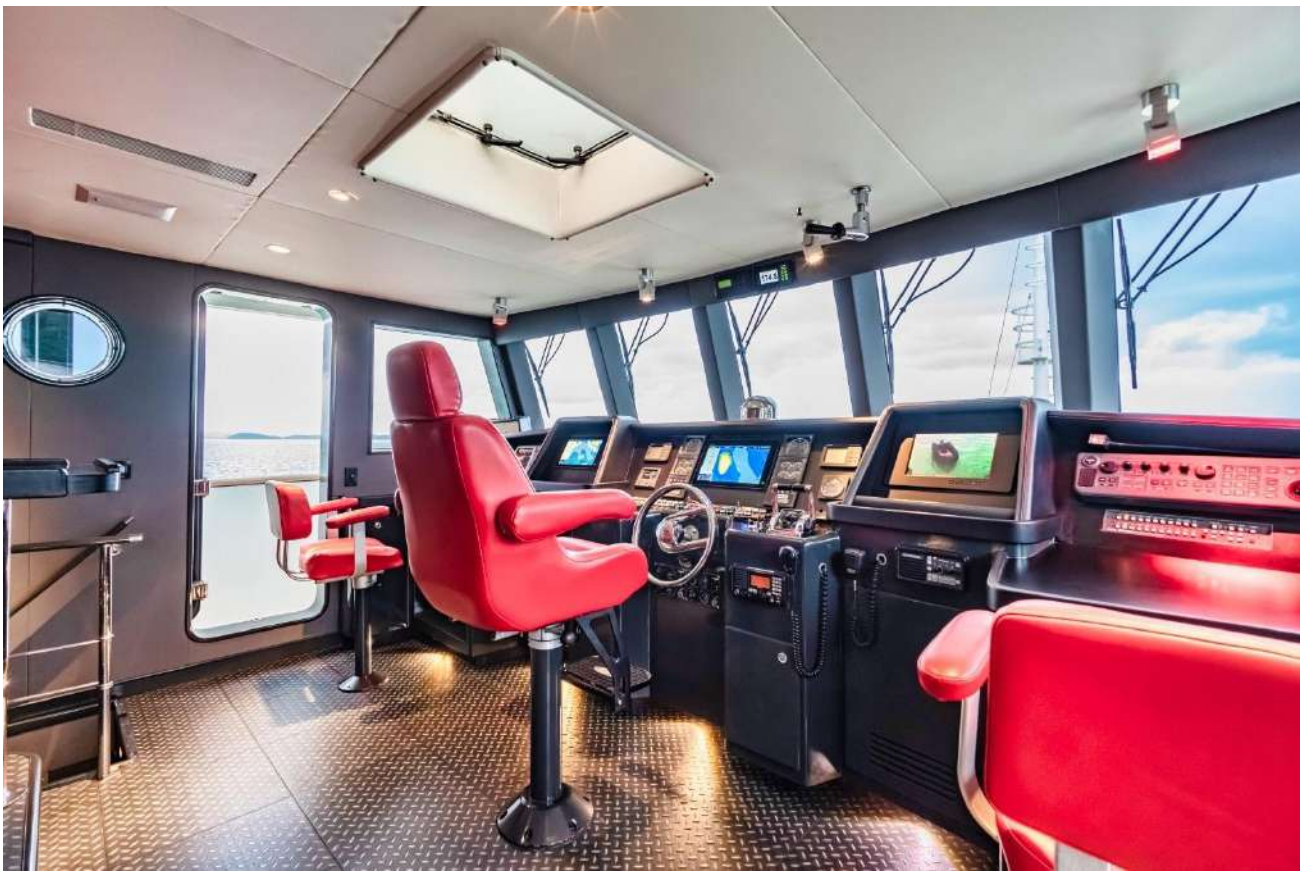








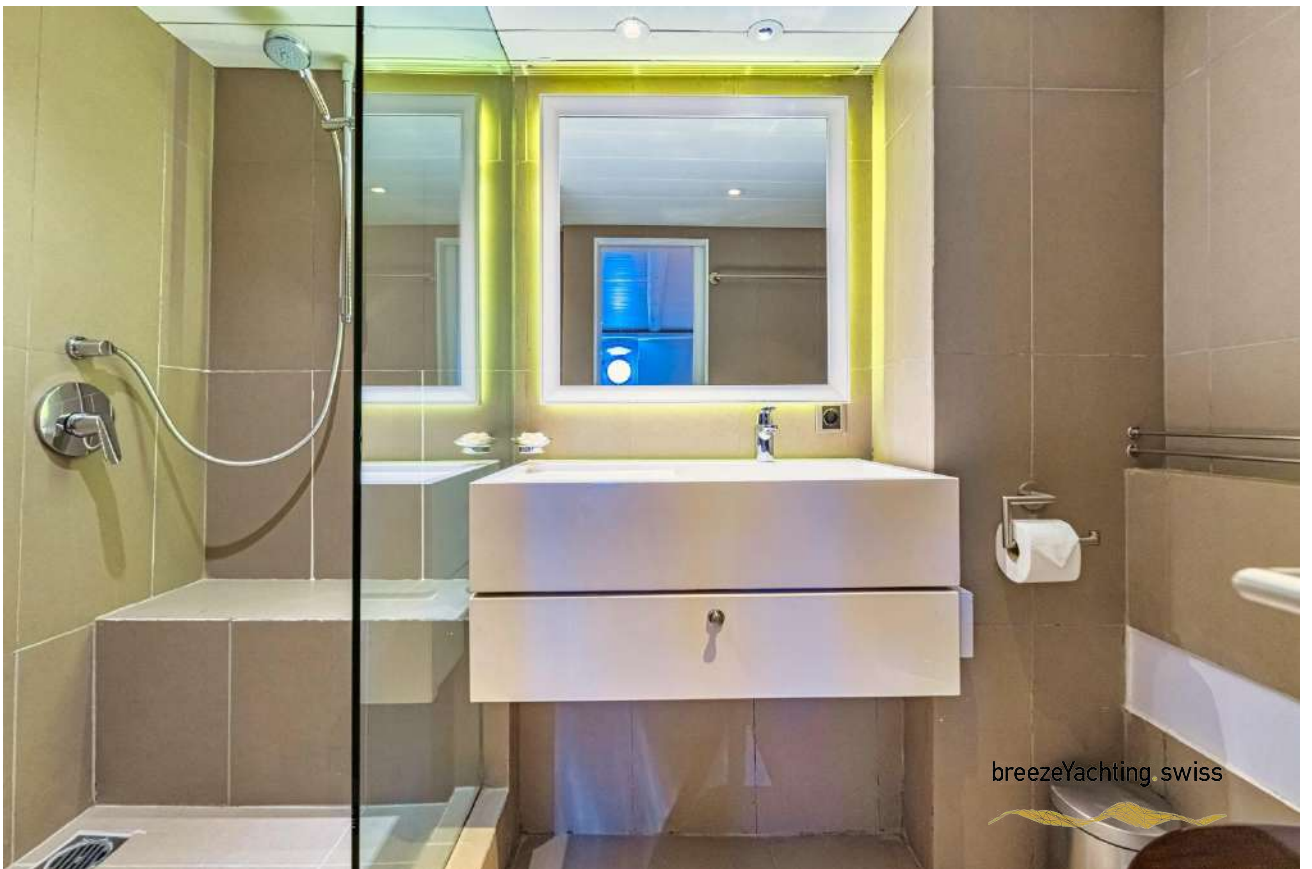








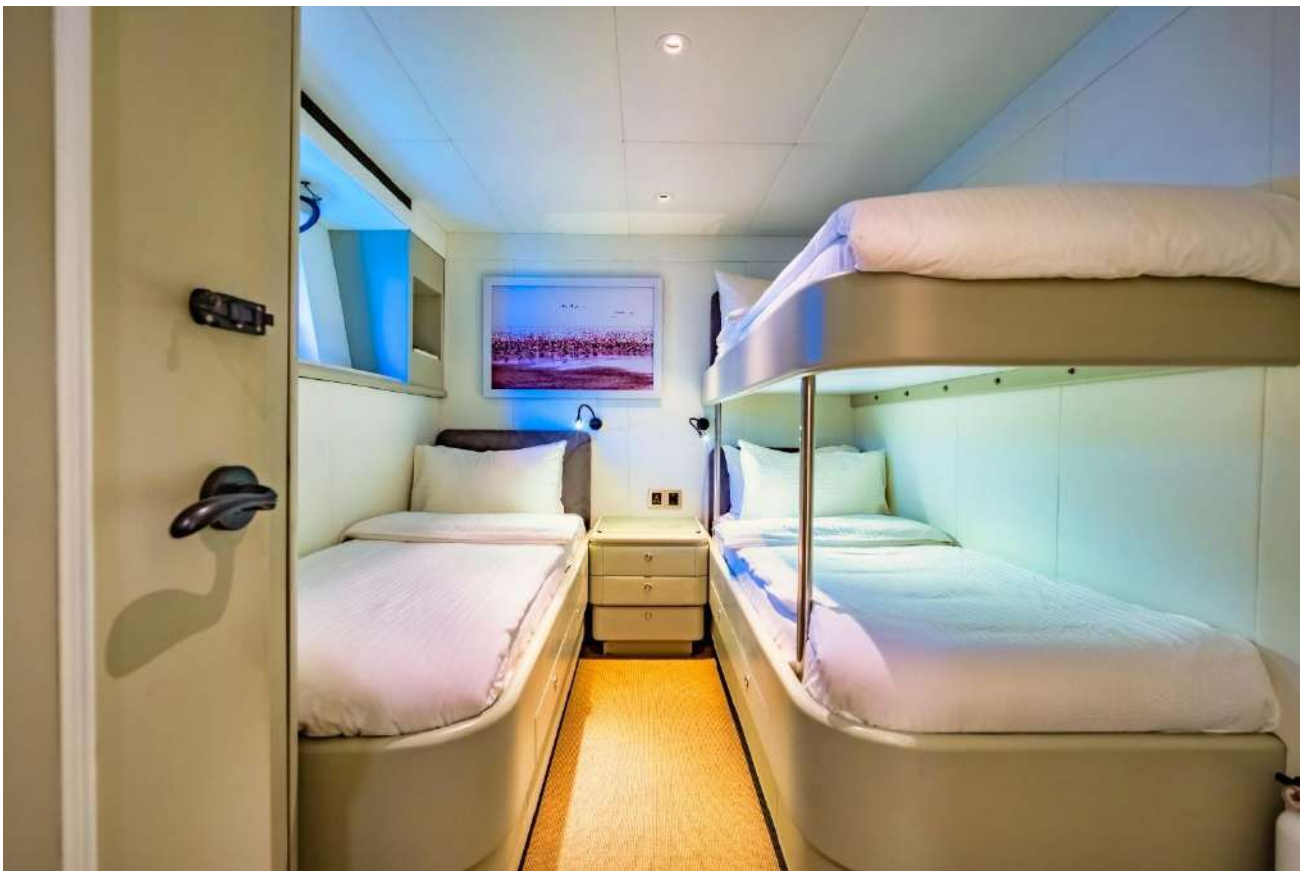






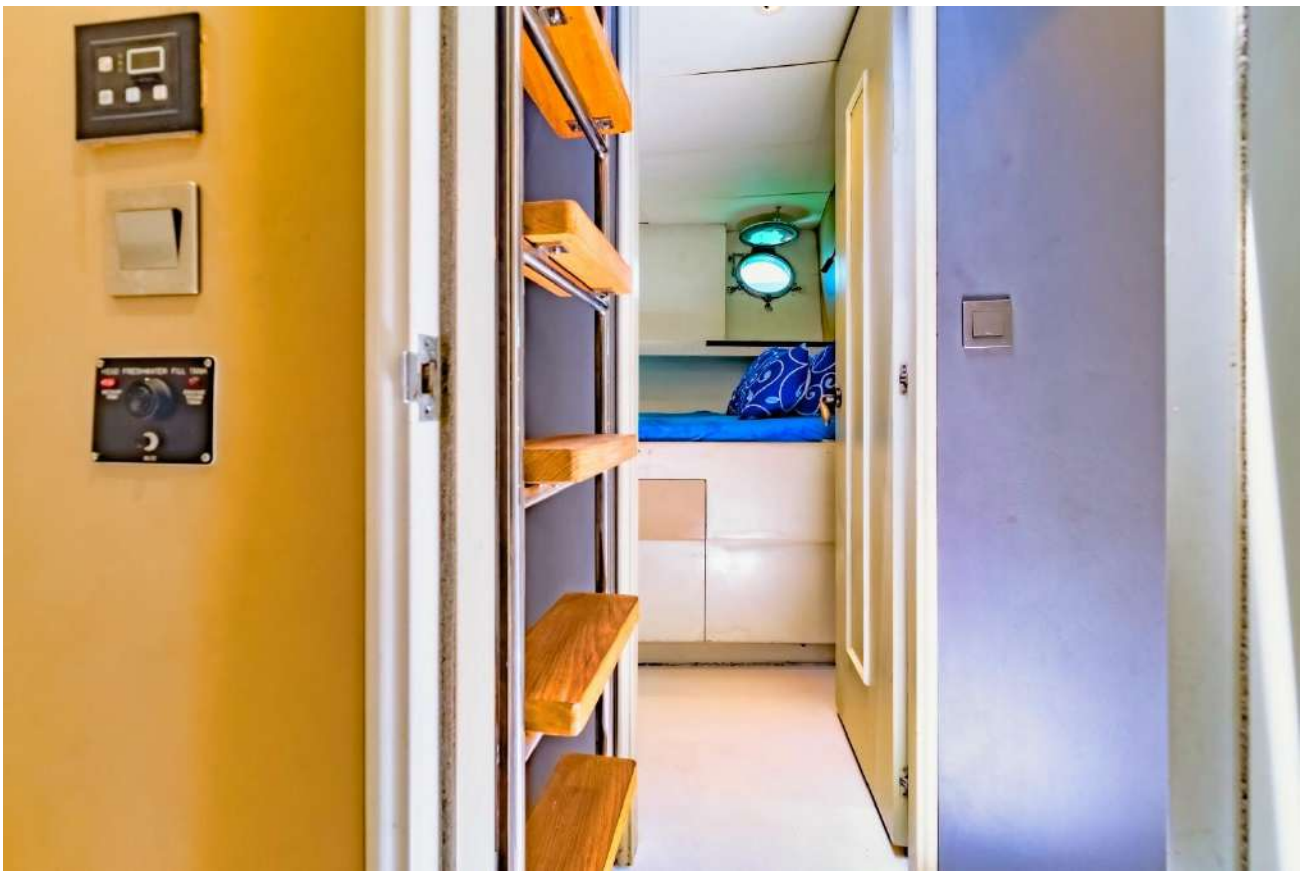
breezeYachting swiss





breezeYachting swiss





breezeYachting swiss

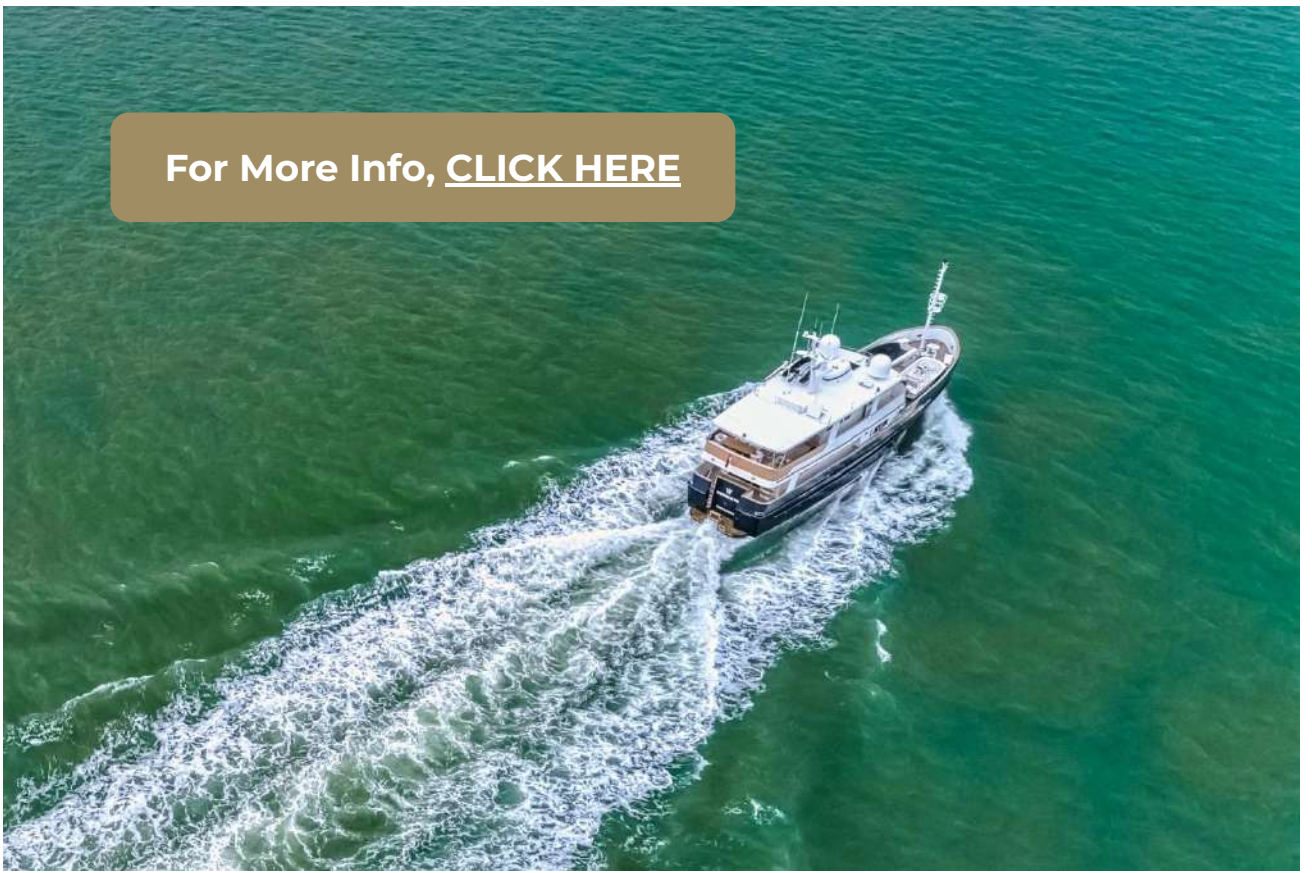




breezeYachting swiss



For More Info, [CLICK HERE](#)



breezeYachting.swiss





CASSIDY WOODS

Yacht Advisor

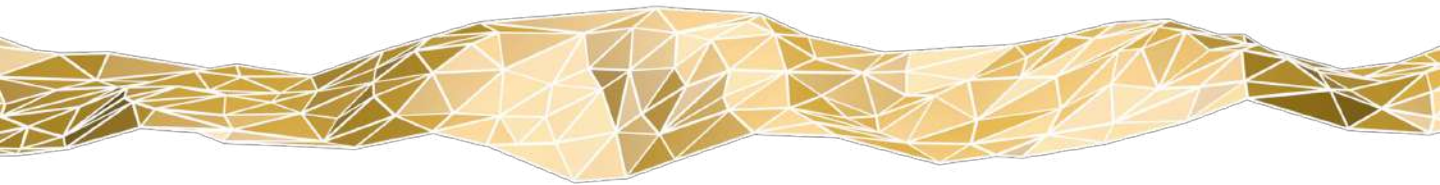
 WHATSAPP ME

m. +35 69 933 8880

cass@breezeyachting.swiss

breezeYachting.swiss

WE SPEAK YACHTING. LET'S TALK.



Switzerland ● Malta ● Spain ● Monaco

www.breezeyachting.swiss

DISCLAIMER

The company offers the details of this vessel in good faith but cannot guarantee or warrant the accuracy of this information nor warrant the condition of the vessel. A buyer should instruct his agents, or his surveyors, to investigate such details as the buyer desires validated.

This vessel is offered subject to prior sale, price change or withdrawal without notice.