

breezeYachting.swiss



# Cranchi 67 Fly

## AMY

€2'695'000 excl. VAT | 20.8m | 2023

# KEY POINTS

- Brand-new yacht with a very light use, only 186 hours on engines
- Full Volvo IPS package with DPS digital anchor
- Humphree stabilising fins and trim tabs
- Hydraulic swim platform and a garage for Williams 325
- Upgraded sound system with sub buffers



# SPECIFICATIONS

<b>Builder:</b>	Cranchi
<b>Model:</b>	67 Fly
<b>Year:</b>	2023
<b>Hull/Superstructure:</b>	GRP
<b>Deck material:</b>	Teak
<b>Interior Design:</b>	Christian Grande
<b>Exterior Design:</b>	Christian Grande
<b>Flag:</b>	Swiss
<b>Location:</b>	San Giorgio di Nogaro, Italy
<b>Length overall:</b>	20..80 m
<b>Registered Length:</b>	18.73 m
<b>Beam:</b>	5.40 m
<b>Draft:</b>	1.74 m
<b>Displacement:</b>	42 T
<b>Guests:</b>	6
<b>Staterooms:</b>	3
<b>Cabins Configuration:</b>	3 double cabins + 1 twin cabin for crew
<b>Heads:</b>	3
<b>Crew:</b>	2
<b>Crew Cabins:</b>	1
<b>Engines:</b>	2 x Volvo Penta 2xD13 IPS 1350
<b>Total Power:</b>	2000HP
<b>Engine Hours:</b>	241 h (27.10.2025.)
<b>Generator:</b>	Kohler 28 Kw
<b>Generator Hours:</b>	626 h
<b>Stabilizer</b>	Humphree fin
<b>Economic Speed:</b>	18 knots
<b>Cruising Speed:</b>	23 knots
<b>Maximum Speed:</b>	30 knots
<b>Range:</b>	300 nm @ 23 knots
<b>Fuel Consumption:</b>	250 l/h
<b>Fuel Tank:</b>	4000 L
<b>Fresh water:</b>	900 L
<b>Black Water:</b>	300 L
<b>Gray Water:</b>	200 L







breezeyachting swiss



breezeYachting swiss







breezeYachting.swiss







breezeYachting swiss

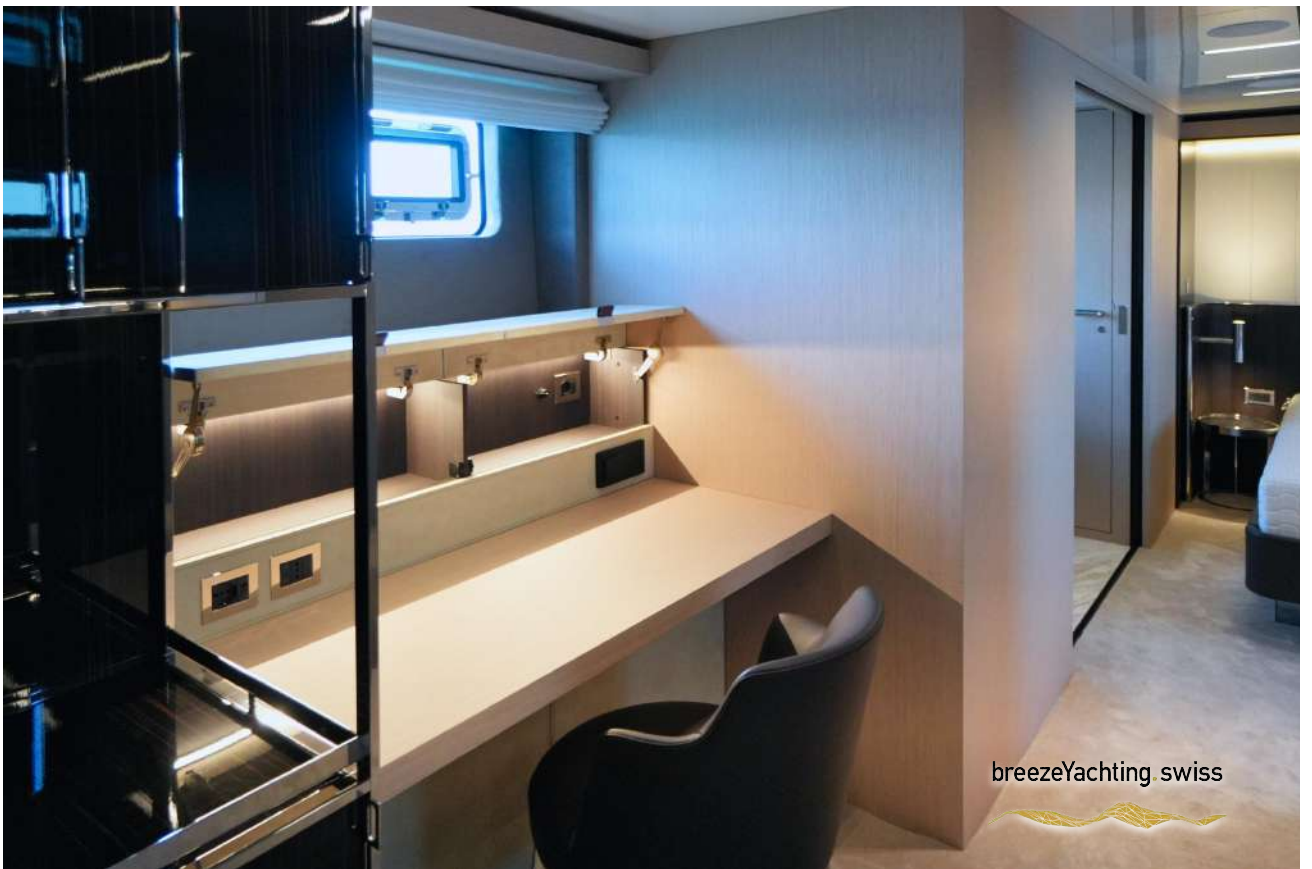




breezeYachting swiss





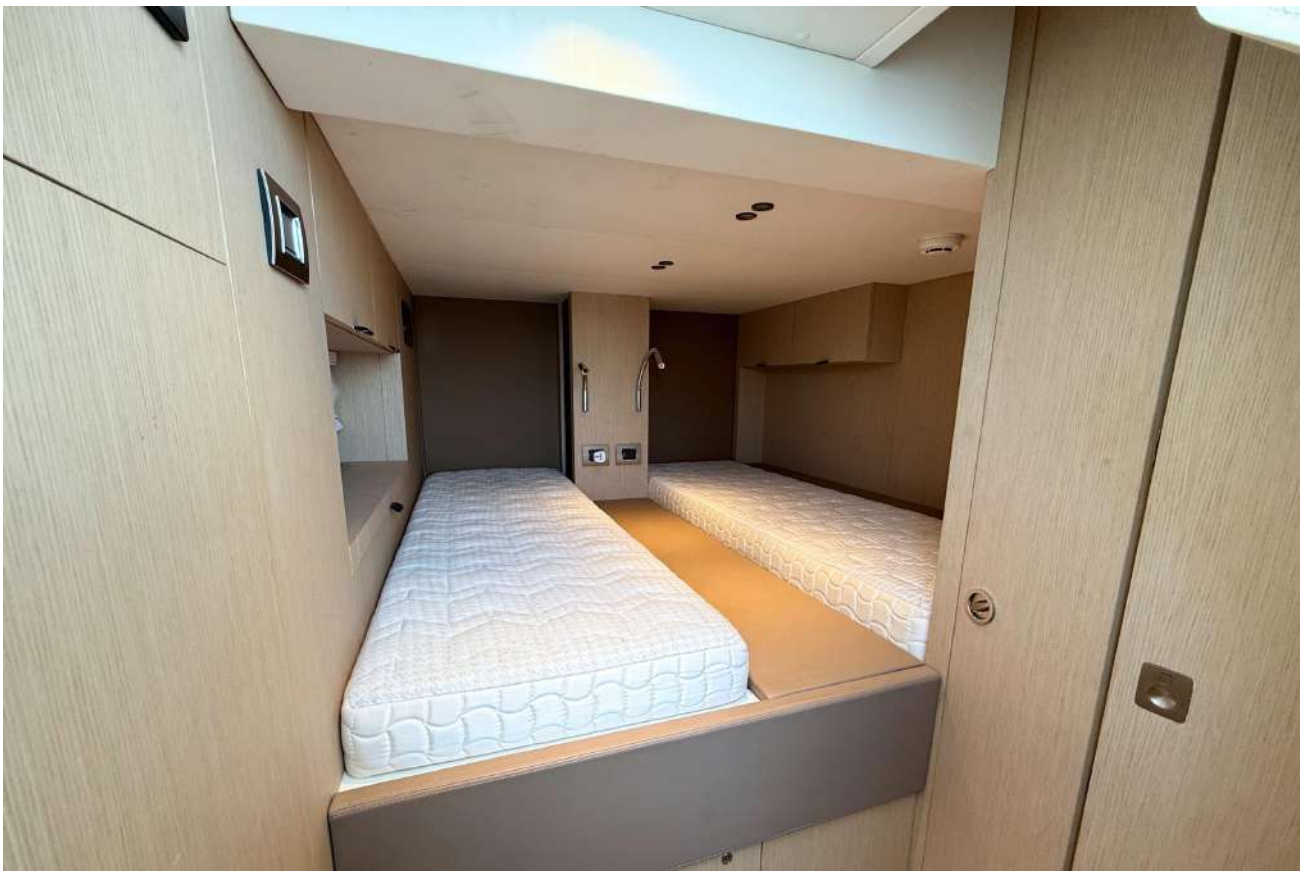








breezeYachting.swiss



breezeYachting swiss



# EQUIPMENT

## EXTRA EQUIPMENT

- Bow bimini top with carbon poles
  - Stern hood with side parts
  - Shower on the flybridge and on the swimming platform
  - Bow thruster with automatic fire extinguisher
  - 130 l/h water maker with cabin control and fresh washing system
  - 28 Kw generator upgrade
  - Third pilot station in the cockpit
  - Volvo Penta DPS digital anchor
  - Raymarine domotica system
  - Ice-maker with separate water tank
  - 8 x underwater lights
  - "Fin Stabilizations System" Humphree
  - Second Plotter 22" screen on Flybridge
  - Boat tracking system with alarms bilge water, dock line disconnected, moving boat, engine activation.
  - Predisposition for gyroscopic stabilizer n.1 Seakeeper 9
  - Flybridge T-Top, with electric opening slats
  - TV SAT cm60 antenna, with balancing dome, without decoder
  - Shore power cable electric winder 20 m (n.2) with remote control
  - Winter covers for the exterior
  - Washer-dryer Miele
- 

## SAFETY & FIRE PROTECTION

- CCTV Systems: Bascom Wired 8 Dome PLUS
  - Cameras: Cameras n.3, of which n.1 in the engine room, n.1 on bow, n.1 on stern
- 

## TENDERS & TOYS

- 2023 Williams 325 turbojet 90 hp



# EQUIPMENT

## MECHANICAL EQUIPMENT

- Gear Box: IPS
  - Steering: IPS
  - Water Maker: Idromar 130/h
  - Fuel Filters: Racor
  - Air Conditioning: Condaria 230V, Btu/h 96,000
  - Bow Thruster: Side Power
  - Trim Tabs: Humphree
  - Boiler: 1 x 100L
- 

## ELECTRICAL SYSTEMS

- Shore Power: Glendinning cable master 2 x 63 Ah
  - Electricity Output: 220V/50Hz
  - Inverter: 4000 kv Mastervolt
  - Main Engine Starting Batteries: 4 x Mastervolt 130 Ah
  - Generator Starting Batteries: 1 x Mastervolt 105 Ah
  - Service batteries: 4 x Mastervolt 225 Ah
  - Batteries chargers: 5 x Mastervolt
- 

## NAVIGATION AND COMMUNICATION

- VHF: Raymarine Ray 90
- AIS: transmitter AIS system class B
- Autopilot: Raymarine P70
- GPS: Raymarine
- Gyro Compass: Yes
- Magnetic Compass: Yes
- Radar: Raymarine Cyclone
- Depth Sounder: Raymarine
- Chart Plotter: 3 x Raymarine Axiom XL 22
- EPIRB: Yes
- SATCOM: KVH



# EQUIPMENT

## DECK EQUIPMENT

- Anchor Windlass: Lofran X4 2300w
  - Aft Warping Capstans: 2 x Lofrans electrics
  - Anchors: 1 x Ultramarine 60 kg
  - Anchor Chains: 100m of 12mm
  - Passerelle: Besenzoni
  - Swimming Platform: Besenzoni
- 

## AUDIO VISUAL EQUIPMENT

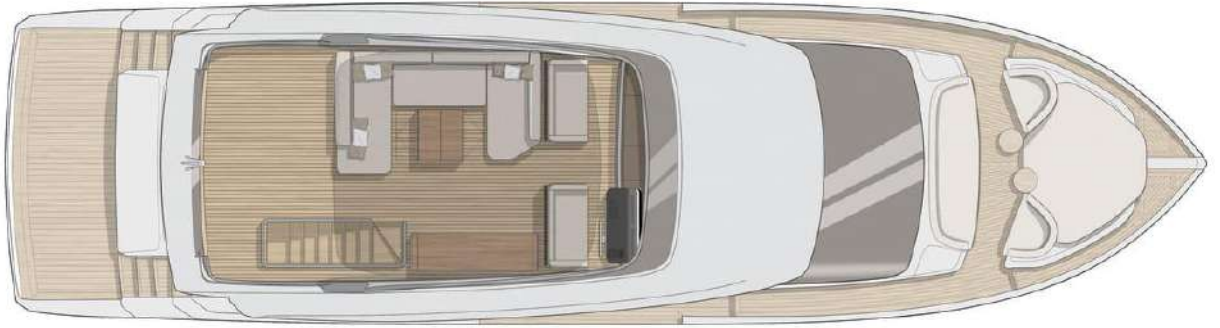
- Audio Equipment: Fusion sound system + exterior and interior sub buffers
  - Video Equipment: Samsung 55" LED TV that folds away inside the saloon + home theatre sound system SONOS
  - Cabin Equipment:
    - Samsung 55" LED TV in master cabin
    - Samsung 43" LED TV in VIP cabin + Radio Bluetooth/Usb
    - Samsung 32" LED TV in guest cabin + Radio Bluetooth/Usb
- 

## GALLEY & LAUNDRY

- Cooking Equipment: Foster induction hob
- Microwave: MIELE
- Extractor Fan: Foster
- Dishwasher: MIELE
- Refrigerator:
  - MIELE in the galley
  - Vitrofrigo on the fly
- Freezer: MIELE
- Ice Maker: 1 x Vitrofrigo on the fly
- Washing and Dryer: MIELE



# LAYOUTS





For more information, [CLICK HERE](#)





**EMMA KARANOVA**

Yacht Advisor

 WHATSAPP ME

m. [+41 79 702 7262](tel:+41797027262)

[emma@breezeyachting.swiss](mailto:emma@breezeyachting.swiss)



**MARCO PAVAN**

Yacht Advisor

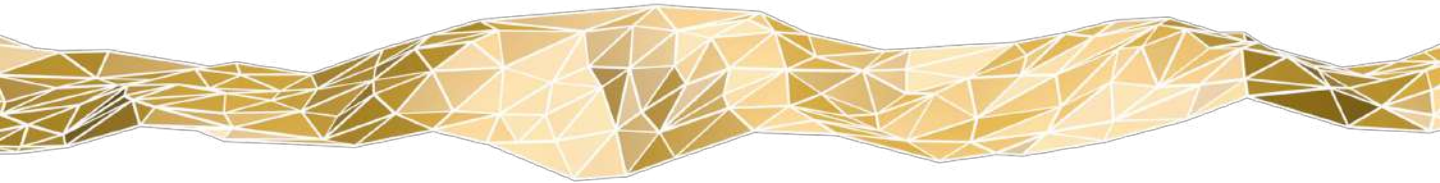
 WHATSAPP ME

m. [+34 622 11 02 60](tel:+34622110260)

[marco@breezeyachting.swiss](mailto:marco@breezeyachting.swiss)

# breezeYachting.swiss

WE SPEAK YACHTING. LET'S TALK.



Switzerland ● Malta ● Spain ● Monaco ● St. Tropez

[www.breezeyachting.swiss](http://www.breezeyachting.swiss)

DISCLAIMER

The company offers the details of this vessel in good faith but cannot guarantee or warrant the accuracy of this information nor warrant the condition of the vessel. A buyer should instruct his agents, or his surveyors, to investigate such details as the buyer desires validated.

This vessel is offered subject to prior sale, price change or withdrawal without notice.