

breezeYachting swiss



DOMINATOR 800 'DOLLY'

€2'250'000 excl. vat | 24.5m | 2015

KEY POINTS

- Custom-built by an experienced captain for an experienced owner, meeting CE Category A standards (highest strength rating)
- One owner since new, used exclusively for private purposes
- Sturdy components, high-quality materials, and precision craftsmanship
- Unique Pod drive system with counter-rotating propellers for low vibration, noise, and emissions
- Includes 2x SEAKEEPER Gyro 9, Yacht Controller, HUMPHREE interceptors with intelligent stabilization, water purification system, Williams 385 Tender
- Powered by two REINTJES FORTJES 4000 Z-drive pods, offering enhanced efficiency and maneuverability



SPECIFICATIONS

Builder:	Dominator
Model:	800
Year:	2015
Hull/Superstructure:	GRP hull/ Carbon Fiber superstructure
Deck material:	Teak
Class:	CE – Category A
Exterior Designer:	Alberto Mancini
Interior Designer:	Alberto Mancini
Flag:	Lebanon
Length overall:	24.5 m
Beam:	6.00 m
Draft:	1.80 m
Displacement:	60 T
Gross Tonnage:	65 GT
Guests:	8
Staterooms:	4
Crew:	3
Crew Cabins:	2
Engines:	2 x MAN V12 1800 HP
Propulsion:	REINTJES FORTJES 4000 Z-drive pods
Total Power:	3600 Hp
Engine Hours:	1600 h (10.03.2025.)
Generators:	2 x 22.5 kW ONAN CUMMINS
Generator Hours:	3024 h (10.03.2025.)
Stabilizer	2 x SEAKEEPER M-9
Economic Speed:	14 knots
Cruising Speed:	24 knots
Maximum Speed:	35 knots
Range:	390 nm @ 24 knots
Fuel Consumption:	220 l/h
Fuel Tank:	7144 L
Fresh water:	1350 L
Black Water:	630 L
Gray Water:	470 L









breezeYachting.swiss





breezeYachting.swiss









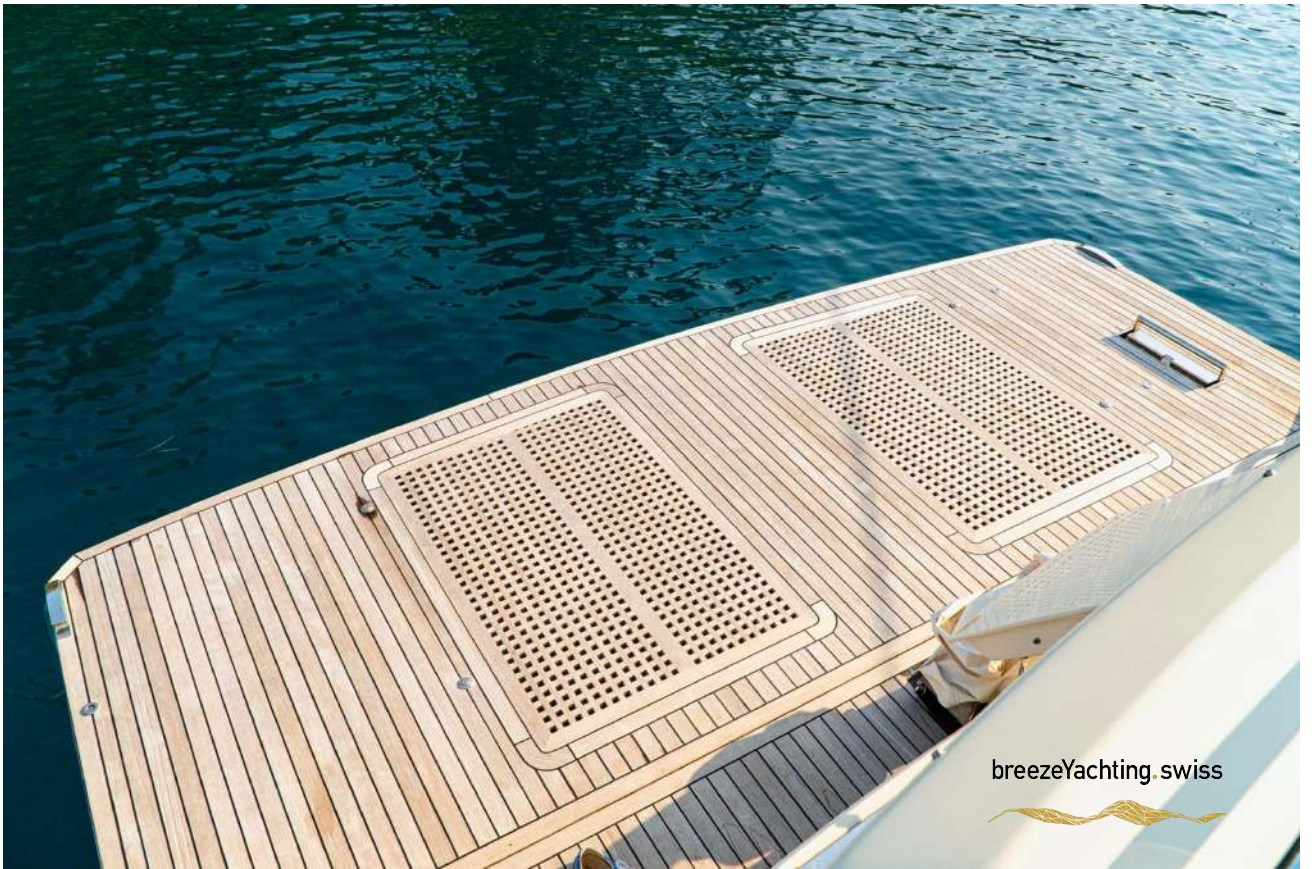






breezeYachting swiss





breezeYachting.swiss







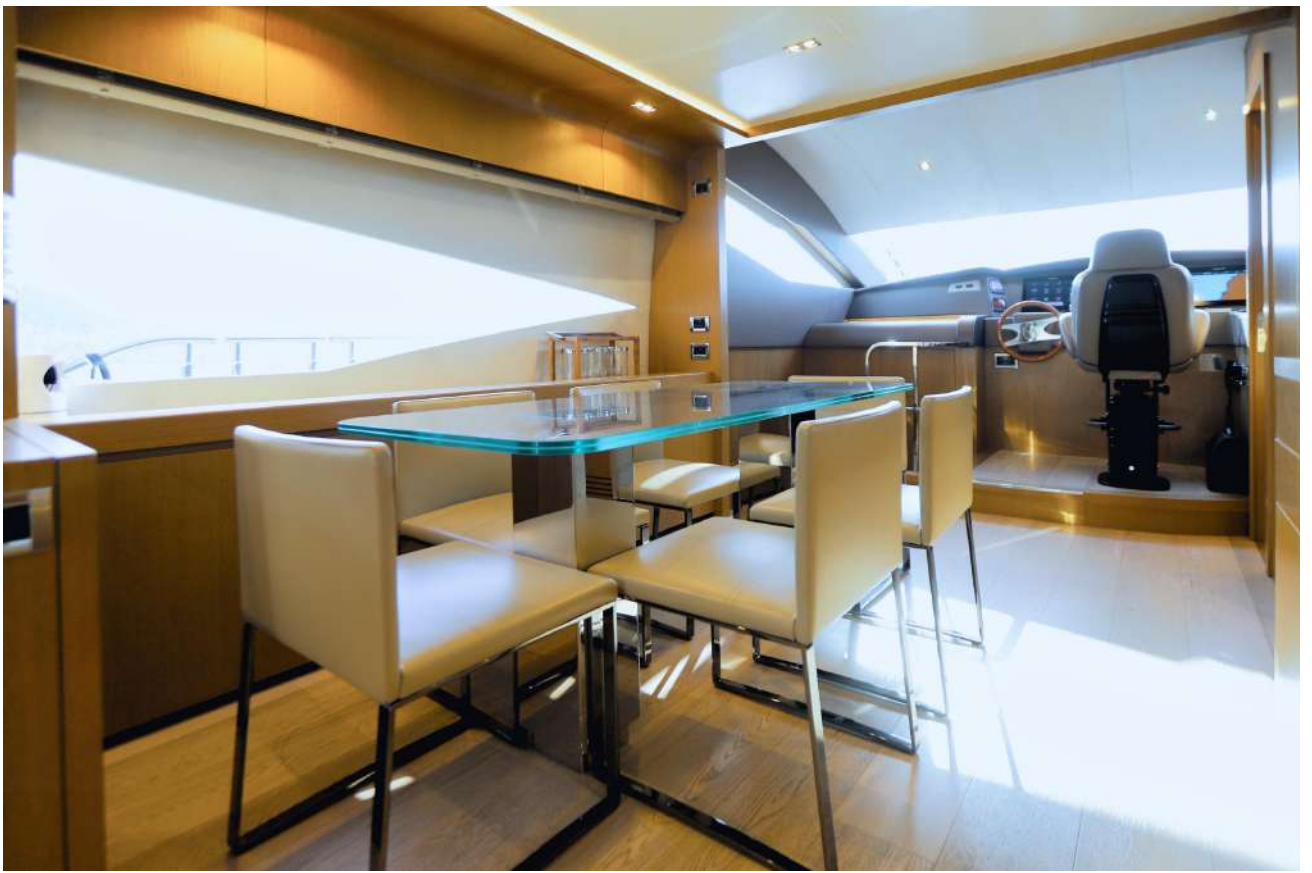
breezeYachting swiss





breezeYachting swiss







breezeYachting.swiss





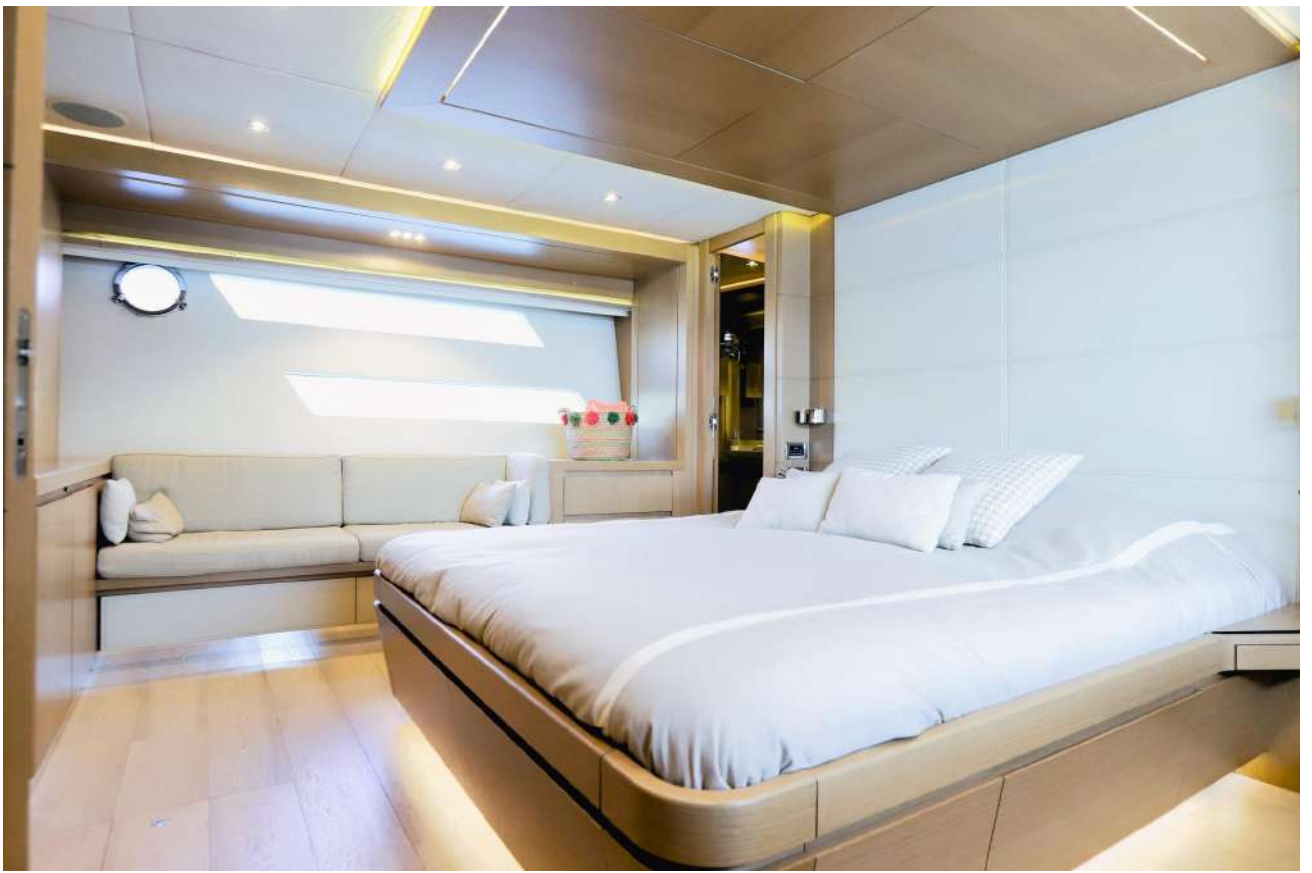


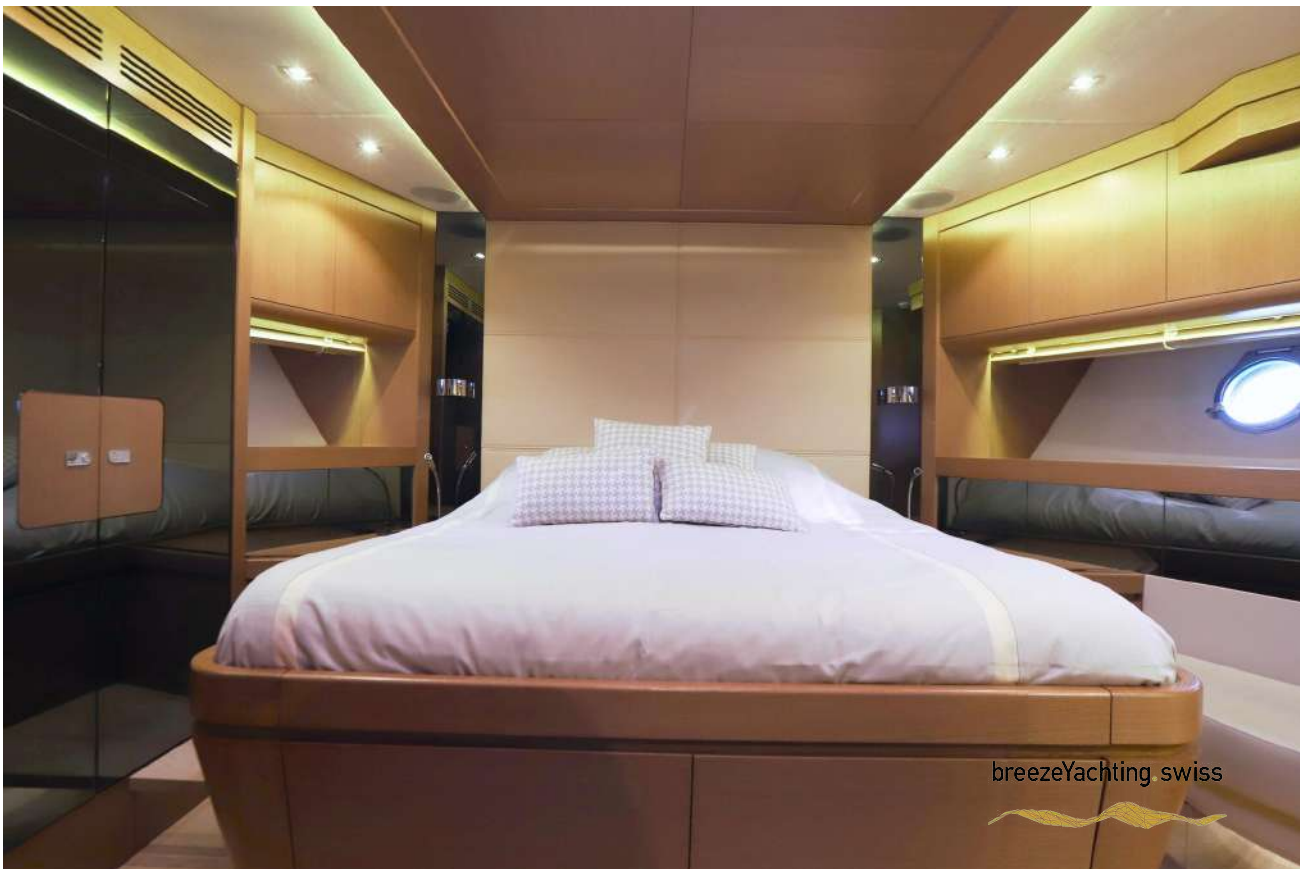


breezeYachting swiss









breezeYachting.swiss







breezeYachting swiss



EXTRAS

MECHANICAL EQUIPMENT

- Steering: Hydraulic
- Water Maker: Idromar MC3J 350 l/h
- Water purifier: Idromar
- Fuel Filters: 2 x RACOR
- Air Conditioning: Condaria 120.000 BTU
- Bow Thruster: Hydraulic 300 kp
- Stern Thruster: Hydraulic 350 kp
- Fresh water pump: Gianceschi – II
- Trim Tabs: 4 x HUMPHREE interceptors full optionals with active-intelligent stabilization system
- Stabilizers: 2 x Seakeeper M-9

DECK EQUIPMENT

- Anchor Windlass: 1
- Aft Warping Capstans: 2
- Anchors: 1
- Anchor Chains: 1 x 170
- Passerelle: Opacmare
- Swimming Platform: Hydraulic, lifting capacity 700 kg
- Underwater lights: 3 x XENON on the stern
- Hard top: With electrical sliding roof
- Air conditioning: AC outlet in the cockpit
- Electric doors:
 - To galley on the starboard side
 - To crew cabins on the aft



EXTRAS

ELECTRICAL SYSTEMS

- Shore Power: 63 Ah
- Electricity Output: 220V 50Hz
- Inverter: Mastervolt
- Main Engine Starting Batteries: 4 × 200 Ah
- Generator Starting Batteries: 1 x 150 Ah

NAVIGATION AND COMMUNICATION

- VHF: 1
- Autopilot: Raymarine ST7002
- GPS: Yes
- Gyro Compass: 1 x Ritchie
- Radar: Raymarine
- Depth Sounder: Raymarine
- Chart Plotter: 2 x Raymarine Axiom 12 pro-S
- Wind Instruments: Yes
- Searchlight: Yes
- DSC Controller: Yes
- Night Vision: FLIR M232 thermal IP camera

GALLEY & LAUNDRY

- Cooking Equipment: MIELE induction oven
- Microwave: MIELE
- Extractor Fan: MIELE
- Refrigerator/freezer: Frigonautic
- Freezer: Frigonautica
- Ice Maker: BREMA
- Washing Machine: LG in the crew cabin
- Winecooler: MIELE



EXTRAS

AUDIO/VIDEO EQUIPMENT

- High performance audio/video system with YAMAHA amplifier and SONANCE speakers including integrated 2 x iPads to manage the whole entertainment system
- BOSE 325 CD / Blu-Ray / iPhone / iPod + intelligent R/C
- 2 x TV LED 40" in salon and owner cabin
- 3 x TV LED 22" in 2 guest and VIP cabin
- SAT Communication telephone / Internet / Wi-Fi and CAT-5 cabling in all cabins

SAFETY & FIRE PROTECTION

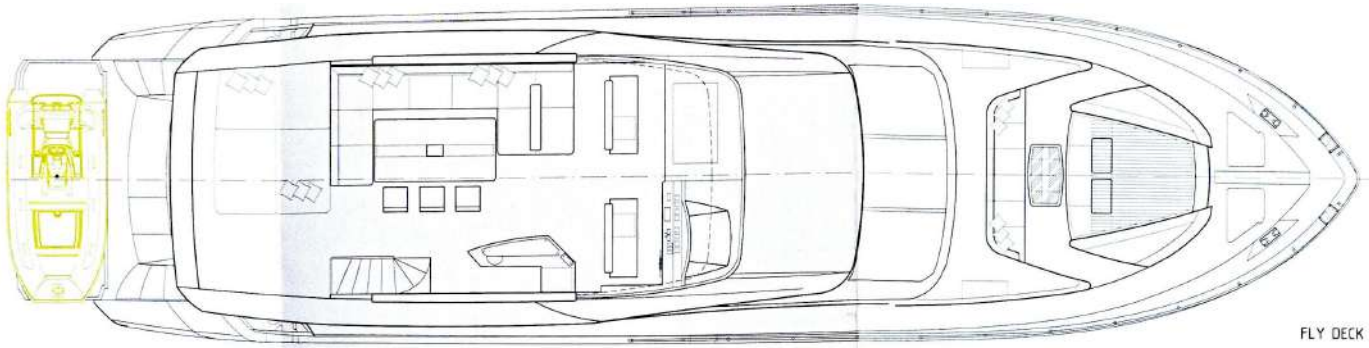
- Emergency yacht management console near pilothouse
- CCTV Systems: 4 x cameras
- Cameras: Infrared Camera in engine room and in cockpit
- Monitors: 1 x pilothouse
- Automatic anti-fire system FM200
- Professional marine fire smoke detection system for all cabins & engine room
- Special isolation in engine room and main deck (acoustic and thermic)

EXTRA EQUIPMENT

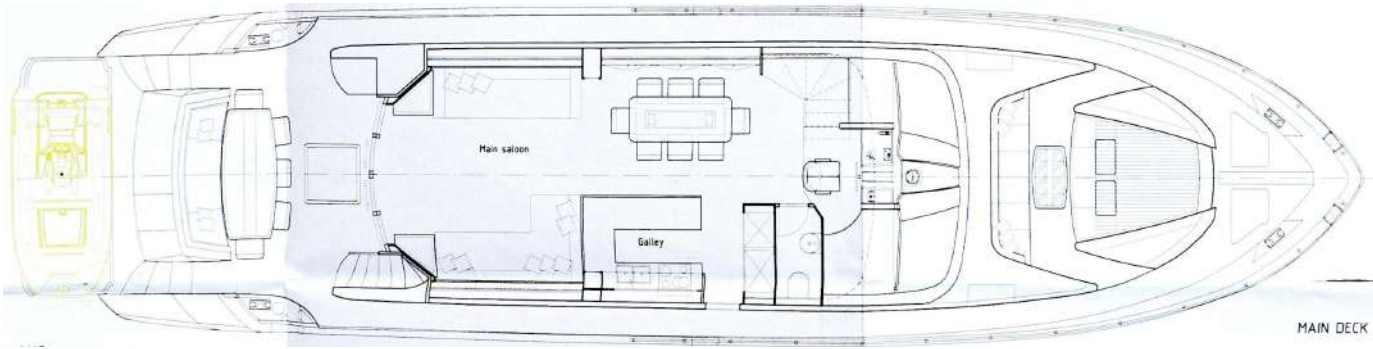
- 2 x Seakeepers model 9
- YachtController®
- Water purification system IDROMAR
- Electric curtains and blinds throughout the yacht
- Exterior Air conditioning on the aft deck
- Hardtop with an electrically operated opening roof
- Hull in Gelcoat finish in crème color
- Custom-made high-quality carpentry
- Day head on the main deck
- Tender Williams 385



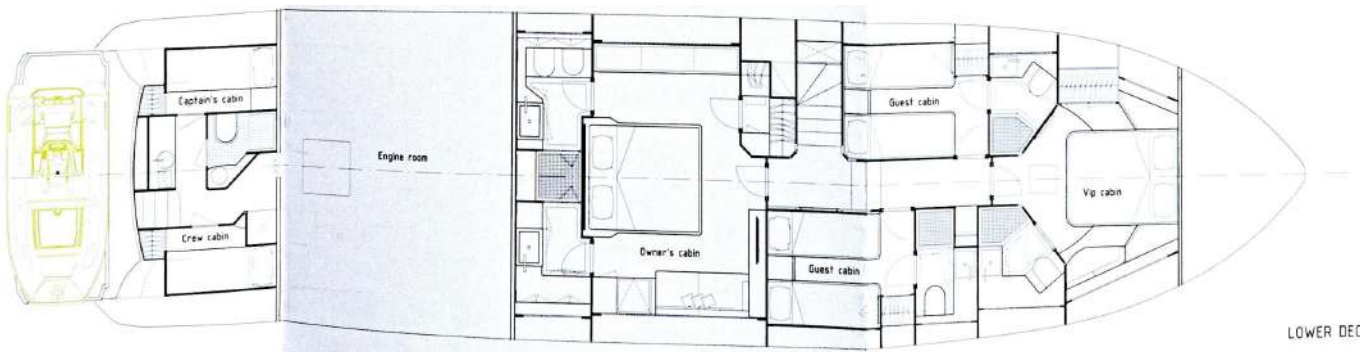
LAYOUTS



FLY DECK



MAIN DECK



LOWER DECK





For more information, [CLICK HERE](#)



breezeYachting.swiss





EMMA KARANOVA

Yacht Advisor

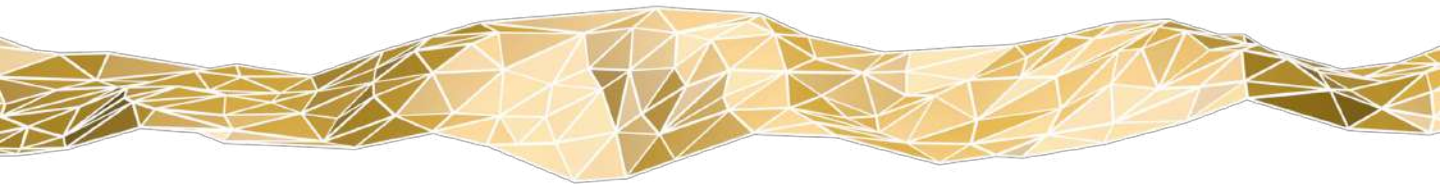
 WHATSAPP ME

m. +41 79 702 7262

emma@breezeyachting.swiss

breezeYachting.swiss

WE SPEAK YACHTING. LET'S TALK.



Switzerland ● Malta ● Spain ● Monaco ● St. Tropez

www.breezeyachting.swiss

DISCLAIMER

The company offers the details of this vessel in good faith but cannot guarantee or warrant the accuracy of this information nor warrant the condition of the vessel. A buyer should instruct his agents, or his surveyors, to investigate such details as the buyer desires validated.

This vessel is offered subject to prior sale, price change or withdrawal without notice.