

breezeYachting.swiss



Mulder 94 Voyager 'FIREFLY'

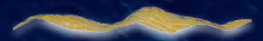
€5'450'000 excl. VAT | 45.72m | 2015

Firefly is the only Mulder 94 Voyager ever built. She is a one-off, 28.65 metres of full-aluminium Dutch construction, designed from the ground up for long-range passage-making. One owner from new, currently in Malta, fully commercially coded for charter.

The Mulder 94 Voyager sits within a Dutch shipbuilding tradition that treats weight, build quality, and long-term reliability as non-negotiable. The aluminium hull and superstructure are marine-grade throughout. The semi-displacement round-bilge hull form is what gives her the range figure: at 8.5 knots, twin CAT C18s burn 30 litres per hour combined across a 17,000-litre fuel capacity, enough for 5,000 nautical miles. That is what the hull and the engines do together at a practical cruising speed.

She sleeps eight guests in four ensuite cabins across a layout designed by Omega Architects and Vickers Studio. Interiors run real Zebrano wood flooring on the lower deck, oak tinted on the saloon level. The galley is all Miele. There are four large fridge-freezers, Starlink satellite internet, and a FLIR night vision camera for extended passages.

Firefly is the kind of boat that gets described by the people who build them as a Dutch superyacht in a compact package. At 28.65 metres she is solid, comfortable, and built to go.



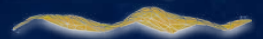
SPECIFICATIONS

Builder:	Mulder
Model:	94 Voyager
Year Built:	2015
Hull/Superstructure:	Aluminum
Deck material:	Teak
Flag:	Malta
Class:	Rina Commercial
Interior Designer:	OMEGA ARCHITECTS / VICKERS STUDIO
Exterior Designer:	OMEGA ARCHITECTS
Length overall:	28.65 m
Beam:	6.85 m
Draft:	1.90 m
Gross tonnage:	161 GT
Displacement:	100 T
Guests:	8
Staterooms:	4
Heads:	5
Cabins configuration:	1 x Master, 1 x Double, 2 x Twin
Crew:	4
Crew Cabins:	2
Crew Cabins configuration:	1 x Captain, 1 x Engineer, 3 x Crew
Engines:	TWIN CATERPILLAR C18
Engine Hours:	4,050 hrs (01.07.2026.)
Total Power:	2,300 hp
Range:	3.600 nm @ 9 kn
Consumption:	30 l/h
Drive type:	shafts
Generators:	40 KvA + 20 KvA
Generator hours:	6620 hrs + 3800 hrs
Cruising Speed:	9 knots
Maximum Speed:	14 knots
Stabilizers:	NAIAD zero speed
Fuel tank:	17,000 l
Fresh water tank:	2,000 l



KEY POINTS

- Dutch pedigree Build, the only Mulder 94 Voyager ever constructed, one owner from new
- Long Range: 5,000 nm range at 8.5 knots
- Full-aluminium marine-grade hull and superstructure, Dutch-built semi-displacement
- Low Consumption: 30 l/h combined fuel consumption on a 17,000-litre tank
- Fully Commercially coded, charter history, ready to operate





breezeYachting swiss



breezeYachting.swiss

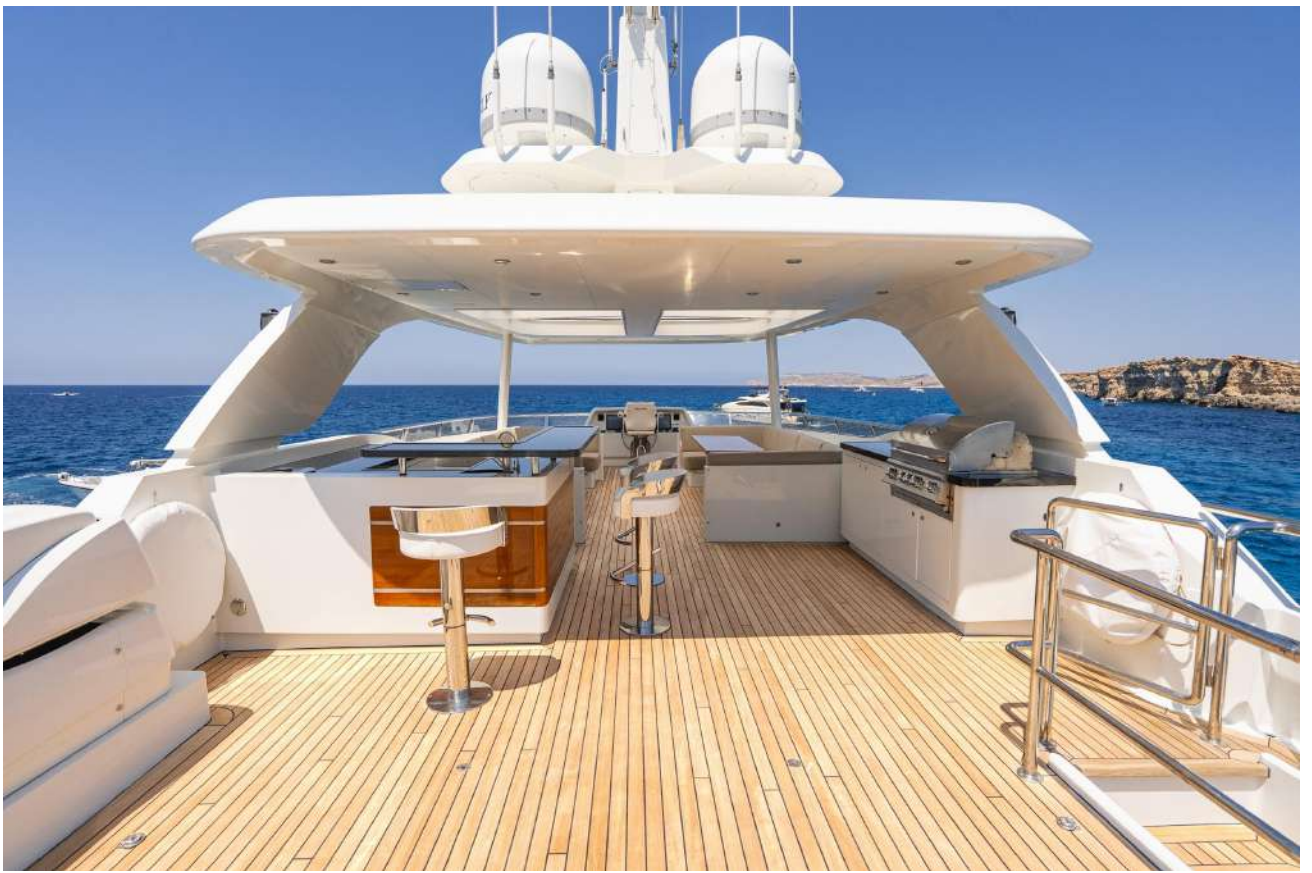




breezeYachting swiss









breezeYachting.swiss



















breezeYachting swiss

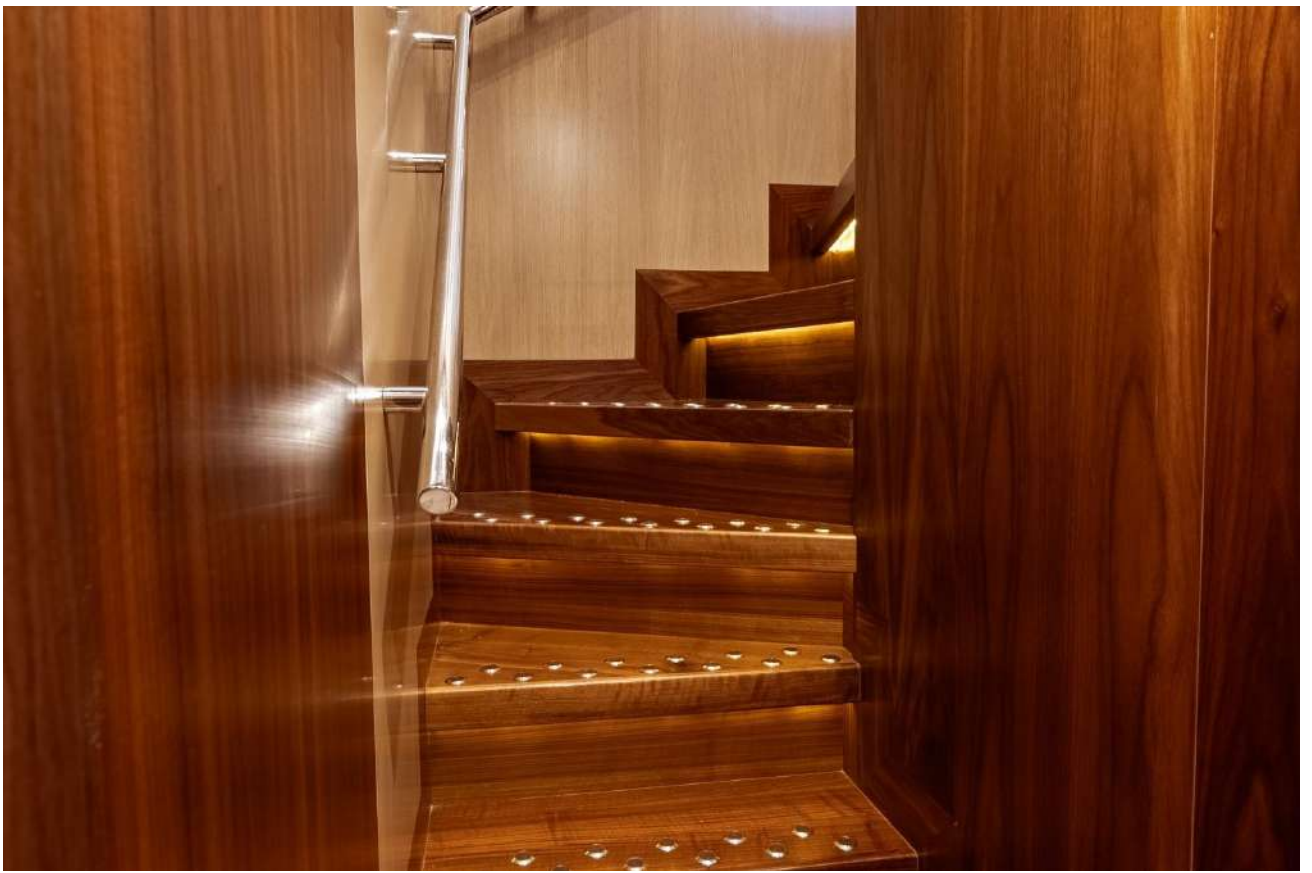




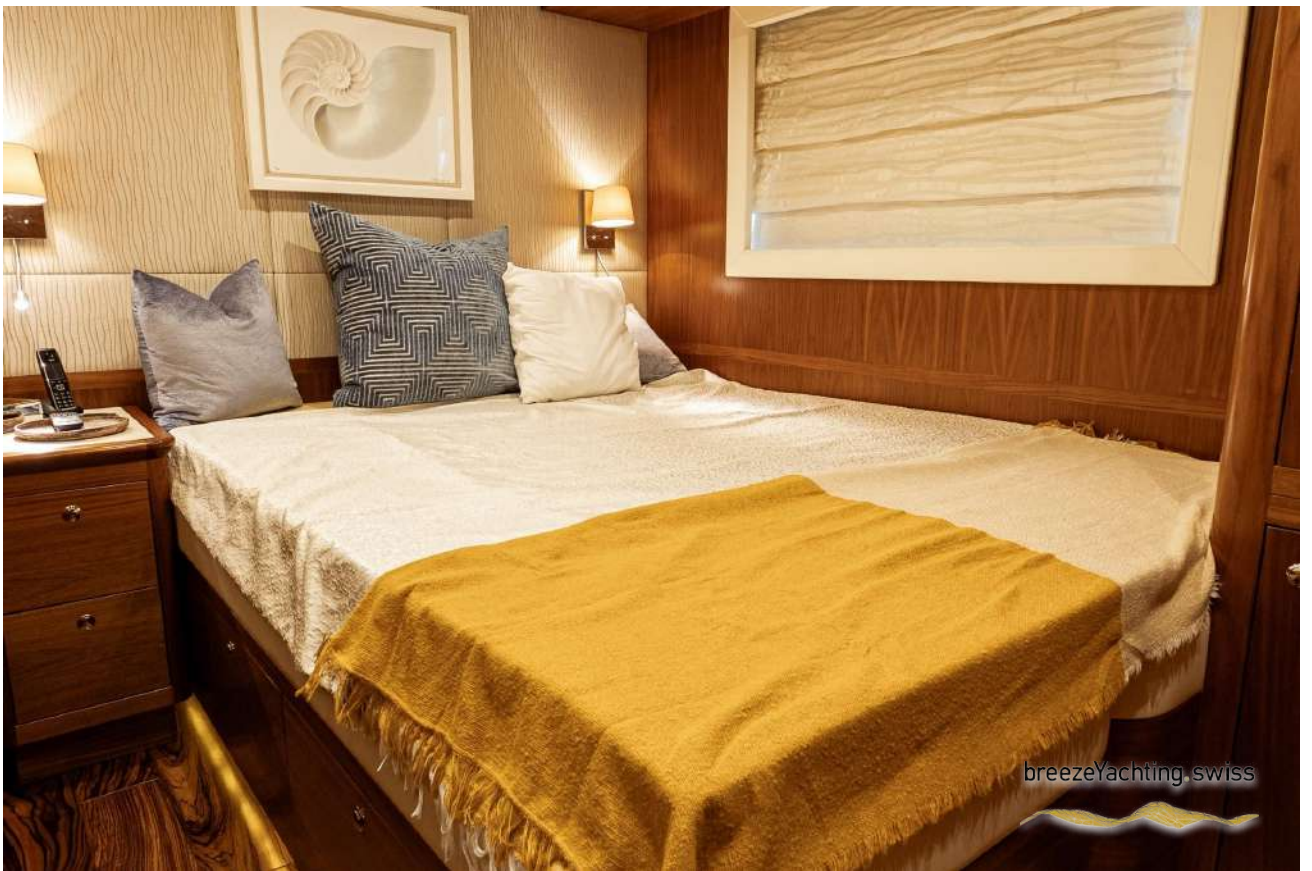
breezeYachting swiss





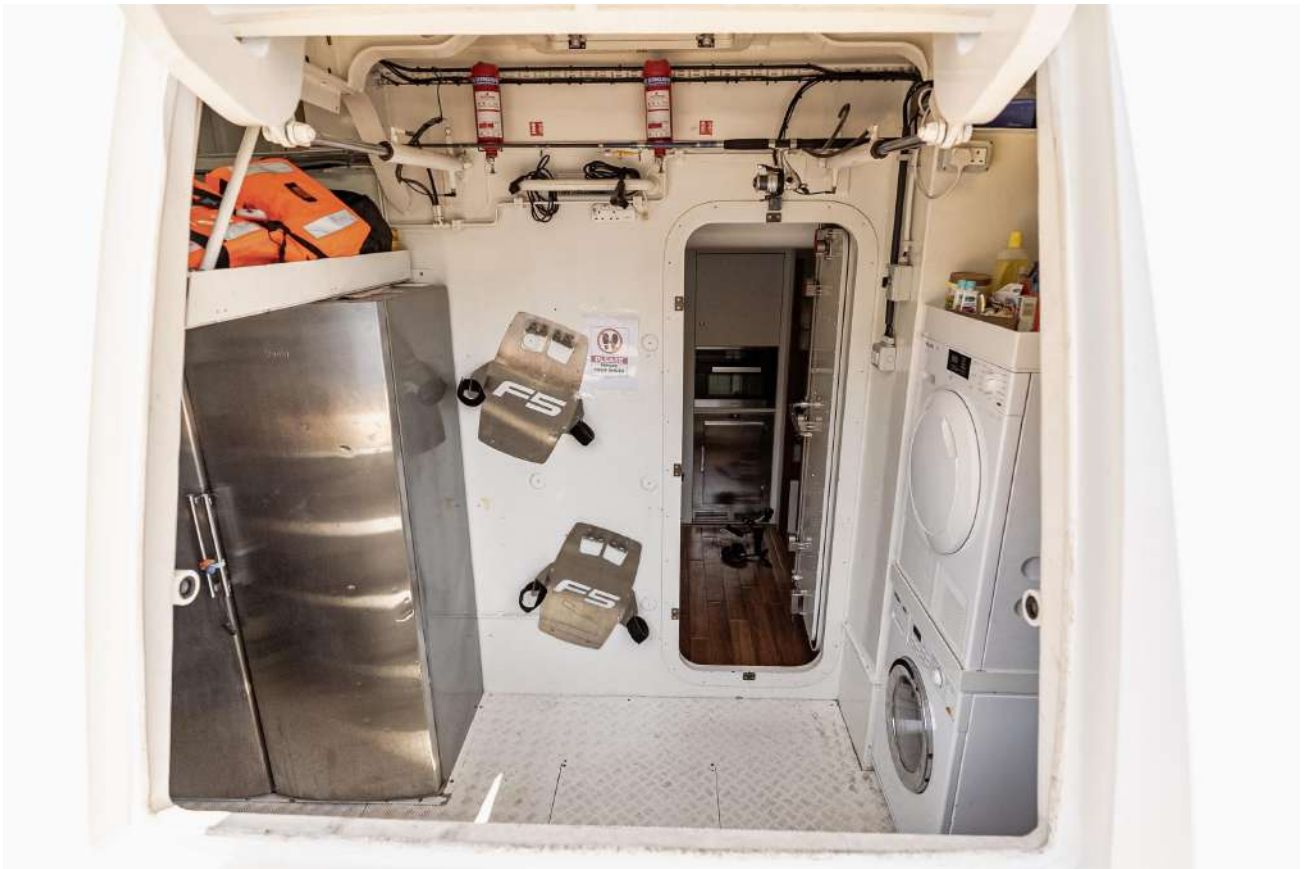














EQUIPMENT

MECHANICAL EQUIPMENT

- Gear Box: ZF
 - Water Maker: 250 litres per hour
 - Air Conditioning: Throughout
 - Bow Thruster: Yes hydraulic
 - Stern Thruster: Yes hydraulic
-

DECK EQUIPMENT

- Anchor Windlass: 2 x hydraulic
 - Aft Warping Capstans: 2
 - Anchors: 2 x 90 kg
 - Anchor Chains: 1 x 150 metres and 1 x 120 metres
 - Boat Crane & Davits: 1 on flybridge
 - Passerelle: Bezenzoni
 - Swimming Platform: Hydraulic up and over
-

NAVIGATION AND COMMUNICATION

- VHF: Raymarine Raymic 260 DSC x 2
 - AIS: Raymarine 400 Class A
 - Autopilot: Raymarine E70 x 2
 - GPS: GS series (3 at lower helm, 2 at upper helm)
 - Magnetic Compass: Yes
 - Radar: Raymarine 72 Nm open array
 - Depth Sounder: Raymarine
 - Night Vision: FLIR
 - SATCOM: Starlink
-

ELECTRICAL SYSTEMS

- Main Engine Starting Batteries: New in Feb 2025
- Generator Starting Batteries: New in Feb 2025



EQUIPMENT

GALLEY & LAUNDRY

- Cooking Equipment: Miele Oven and induction hob
 - Microwave: Sharp
 - Dishwasher: Miele
 - Refrigerator: 4 door custom
 - Freezer: Miele upright in Lazarette
 - Ice Maker: Yes
 - Washing Machine: Miele
 - Dryer: Miele
-

AUDIO VISUAL EQUIPMENT

- Audio Equipment: Yamaha Surround system
 - Video Equipment: Samsung
 - Cabin Equipment: Samsung
-

SAFETY & FIRE PROTECTION

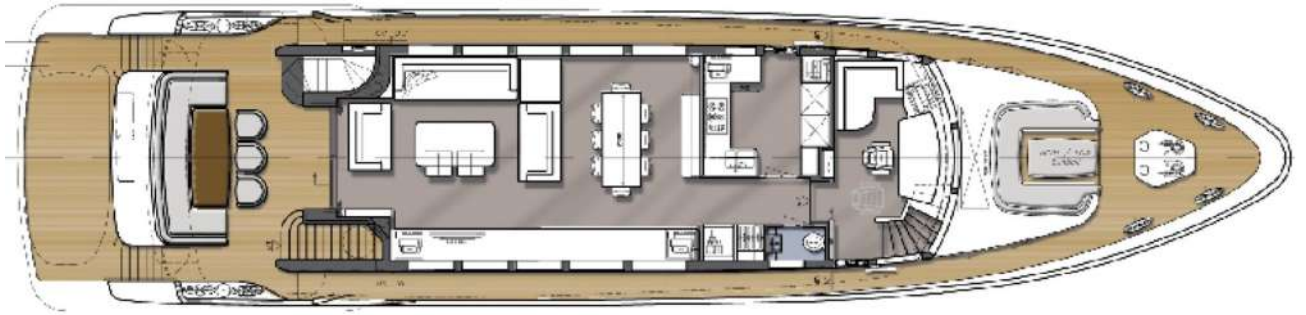
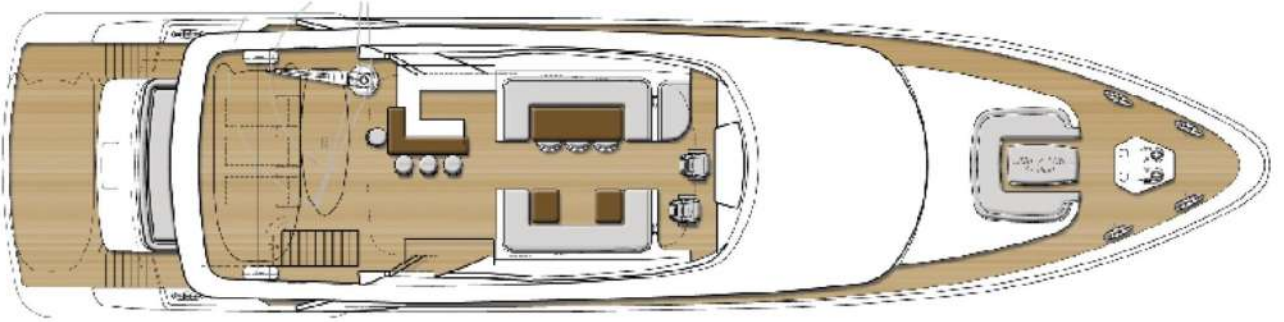
- CCTV Systems: Raymarine 4-camera system
 - Life Jackets: 21
 - Life Rafts: 2 x Sea Safe 12-person SOLAS A
 - Fire Control System: Fixed Novax System
 - Fire Extinguishers: Mixed Foam, CO2, and Powder extinguishers located in all areas
-

TENDERS & TOYS

- Tenders: 5.2m RIB
- Water Toys: 1 x SEADOO JETSKI, 2 x SEABOBS, 1 x SUP
- Recreation: Towable toys



LAYOUTS





For More Info, [CLICK HERE](#)



breezeYachting swiss





CASSIDY WOODS

Yacht Advisor Malta

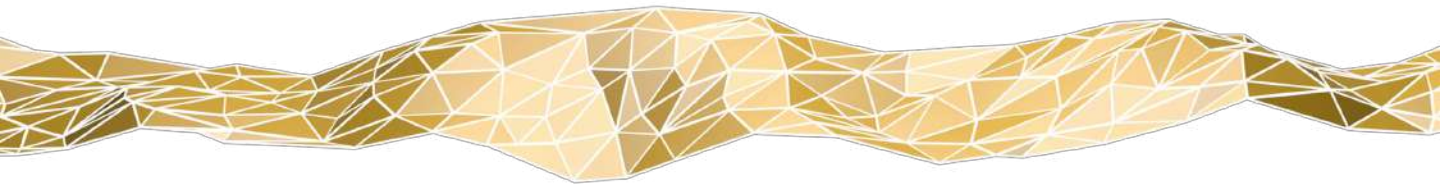
 WHATSAPP ME

m. +35 69 933 8880

cass@breezeyachting.swiss

breezeYachting.swiss

WE SPEAK YACHTING. LET'S TALK.



Switzerland ● Malta ● Spain ● Monaco ● United States

www.breezeyachting.swiss

DISCLAIMER

The company offers the details of this vessel in good faith but cannot guarantee or warrant the accuracy of this information nor warrant the condition of the vessel. A buyer should instruct his agents, or his surveyors, to investigate such details as the buyer desires validated.

This vessel is offered subject to prior sale, price change or withdrawal without notice.