

breezeYachting.swiss



Pendennis 55m 'STEEL'

€29'500'000 excl. vat | 54.9m | 2009

KEY POINTS

- Ice-classed steel hull, 3 cm thick, capable of breaking through 80 cm of ice
- Timeless classic English gentlemen's club interior with 7 guest cabins
- Heated endless pool with artificial current
- Bow-mounted dolphin observation basket
- Wine cellar for 600 bottles with adjoining cigar bar
- Expedition-grade galley with a walk-in refrigerator
- Refit in 2025 (Full paint job, New 5G Antenna, New exterior upholstery)



SPECIFICATIONS

| | |
|-------------------------------------|---|
| Builder: | Pendennis Shipyard |
| Model: | 55m |
| Year: | 2009 |
| Refit Year: | 2025 |
| Hull/Superstructure: | Steel / Aluminium |
| Deck material: | Teak |
| Class: | Lloyd's Commercial |
| Location: | Viareggio, Italy |
| Flag: | Portugal |
| Designer: | Liebowitz & Partners |
| Length overall: | 54.9 m |
| LWL: | 51.6 m |
| Beam: | 9.8 m |
| Draft min: | 2.87 m (Light Load) |
| Draft max: | 3.2 m (Aft) |
| Displacement: | 823.5 tones |
| Gross Tonnage: | 769 GT |
| Guests: | 12 |
| Staterooms: | 7 |
| Guest Cabins layout: | 1 x Master Cabin, 2 x VIP Cabins, 4 x Twin Cabins + Bunk Beds |
| Heads: | 7 Guest Heads, 2 Day Heads + 6 Crew Heads |
| Crew: | 12 |
| Crew cabins: | 6 |
| Crew cabins layout: | 1 x Captain's, 4 x Twin Cabins + Bunk Beds , 1 x Nanny Cabin |
| Engines: | 2 x CAT 3512B 1100 HP / 820 Kw |
| Total Power: | 2200 HP |
| Engine Hours (Port): | 10148 h |
| Engine Hours (Stbd): | 10155 h |
| Drive Type: | ZF |
| Generators: | 3 x CAT C9 / 175 Kw |
| Generator Hours (Port): | 26,784 h |
| Generator Hours (Stbd): | 28,288 h |
| Generator Hours (emergency): | 18,561 h |
| Stabilizer: | 4 Quantum Fins Zero Speed |
| Economical Speed: | 8 kn |
| Cruising Speed: | 10 knots |
| Maximum Speed: | 13.5 knots |
| Range: | 5,063 NM @ 13.5 kn, 10,000 NM @ 10 kn, 12,000 NM @ 8 kn |
| Fuel Consumption: | 320 L/h @ 13.5 kn, 120 L/h @ 10 kn, 80 L/h @ 8 kn |
| Fuel: | 120,000 L (3 Storage Tanks, 2 Service Tanks) |
| Fresh water: | 36,850 L 3 Tanks (10.175 L, 16.965 L, 9.120 L) |
| Gray Water: | 6,890 L |
| Black Water: | 6,950 L |

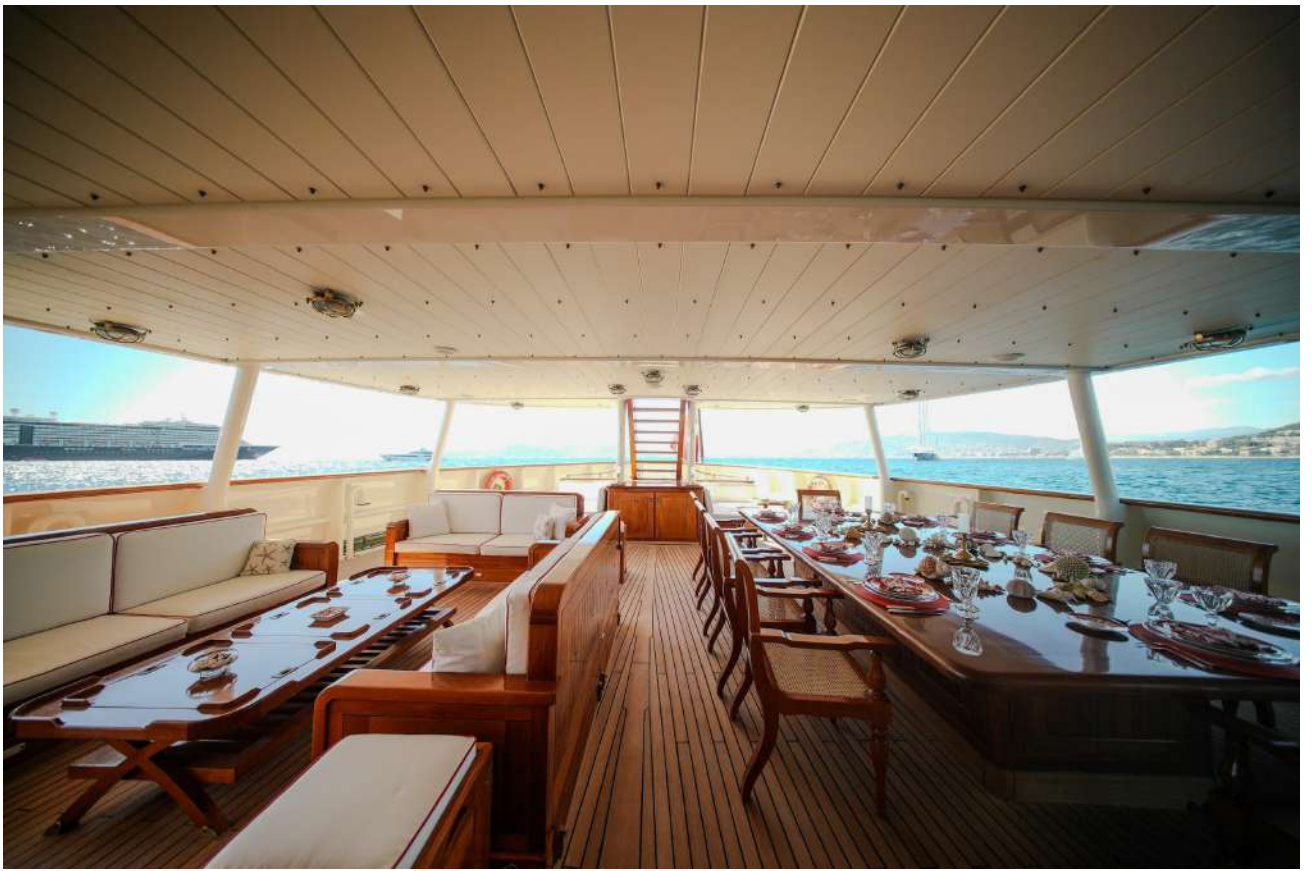








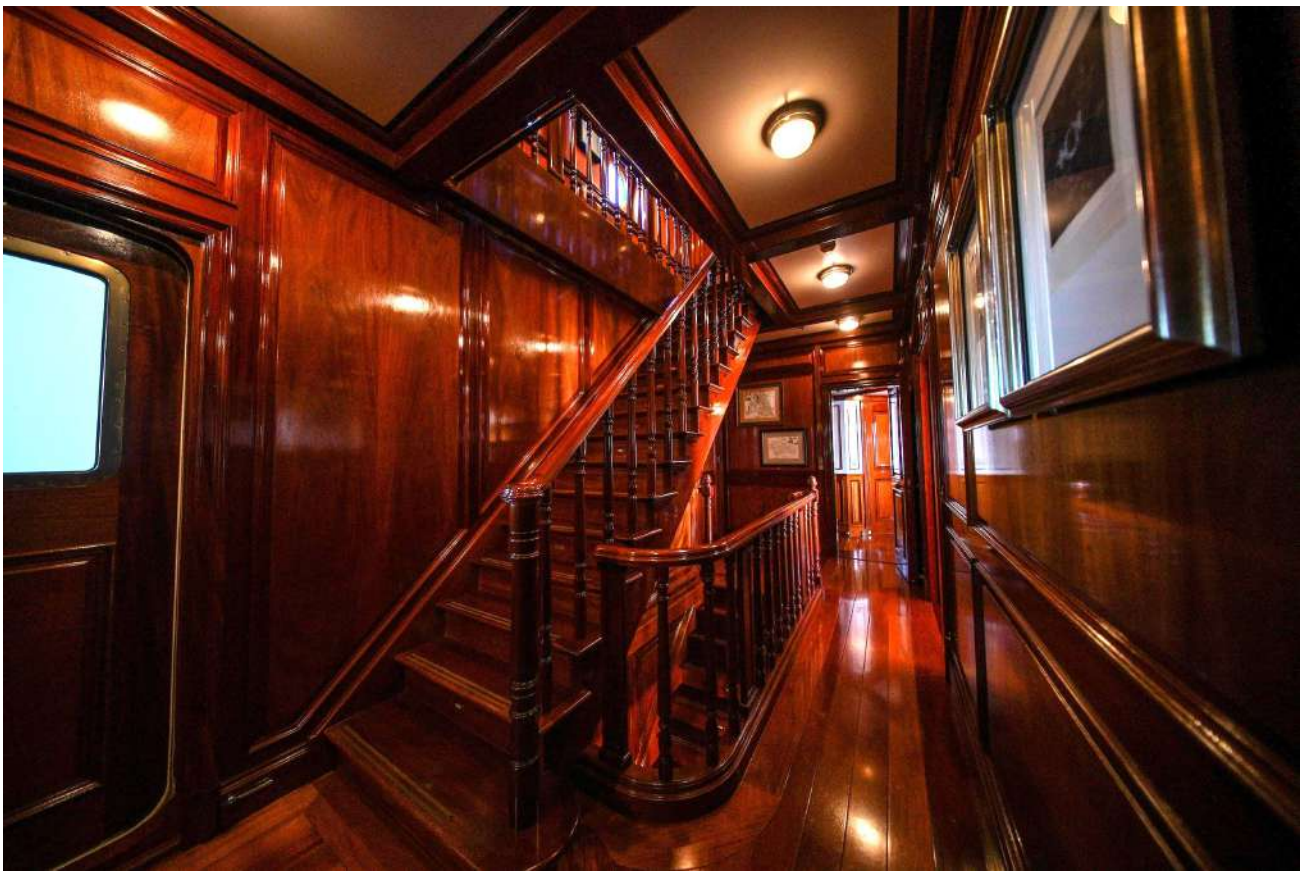
































EQUIPMENT

MECHANICAL EQUIPMENT

- Gearboxes: ZF 10150
- Reduction Gears: ZF
- Propellers: 4 x Lips (2 x summer, 2 x winter)
- Flap rudders: Ulstein Hinze Flap Rudder ICE Class 1A
- Rudder Angle: 45
- Steering System: Konsberg
- Stabilizers: 4 Quantum Fins Zero Speed
- Bow Thruster: Schottel 200 Kw
- Stern Thruster: -
- AC/DC Power Supply Unit: -
- AC/DC Universal Power Supply: -
- Shore Power: Atlas Classic III
- Converters: Atlas Classic III
- Batteries:
 - 2 x 145 Ah (each engine)
 - 2 x Generator (central/stb)
 - 4 x Emergency Generator 24 x Service Batteries 224 Ah
 - 4 x Emergency Batteries 200 Ah
 - 2 x Radio Batteries 110 Ah
- Chargers:
 - Mastervolt Charger MASS 24/50 - Engine & Generator Batteries
 - Mastervolt Charger MASS 24/30 - Emergency Generator Batteries
 - 2 x Mastervolt Charger MASS 24/75 - Service Batteries
- Hydraulics:
 - Central HPU in the Engine Room (Hydraulic Power Unit) Koppen & Lethem
 - Forward HPU for the jet ski crane
 - Tenfjord HPU lazarette unit for steering
 - Hydraulic Systems: Tender Davits, Side Platforms, Gangway, Steering, Water Cannons (Pirate Protection)
- Air Conditioning:
 - Heinen & Hopman Max. Power 315 kW
 - BTU 1.075.410 with 3 Compressors
 - Internal circuit with chilled water, cooled by a refrigerant
- Watermakers:
 - 2 x HEM 40 Duplex
 - 34 m³/day both Watermakers
- Water Filter: 5 micron sediment filters 1 x Charcoal filter
- UV Sterilizer: Aquafine LS HX Series
- Ozone Sanitation:
 - 1 x for Black Water Tank
 - 1 x for Grey Water Tank
- Toilet System: Water Flush 1000
- Sewage Treatment System: Hamann HL-CONT Electrolysis
- Bilge Separator: Bilge Boy 2.5 gpm (0.57 m³/h)
- Fuel Treatment System: Mahle NFV Filter FTS 1200
- Fuel Polishing system: Alfa Laval
- Fuel Purifier: Alfa Laval



EQUIPMENT

NAVIGATION EQUIPMENT

- Magnetic Compass: Cassens & Plath Bravo 170860
- Digital Compass: 2 x B&G H3000
- Repeater: Anschütz 360/10
- Gyro Compass: 2 x Anschütz Standard 22
- Radar Control Unit: Furuno RCU-014
- Automatic Pilot: Raytheon Marine NautoPilot 20X5
- Echo / Log System: Kelvin Hughes GDS101
- AIS: Kelvin Hughes NIS 2002 MkII
- DGPS: 2 x MX420
- Chart Plotter: Wartsila NaviPlanner 4000
- NAVTEX: Furuno NX-700
- Weather Fax: Furuno NX-700
- Weather Station: Furuno NX-700
- Wind Instruments: 2 x B&G H3000
- Searchlights: 2 x Carlisle & Finch Halogen Searchlights
- Sublights: 6 x Underwater Lights Limited 230V, 50 Hz, 150 W

COMMUNICATION EQUIPMENT

- VHF: Kelvin Hughes RT5022
- MF/HF: Sailor CU5100
- SSB: Sailor Iridium
- GSM: Sailor Iridium
- Fleet Broadband System: Sailor Iridium
- Internet:
 - Peplink MAX HD1 Dome Pro (5G),
 - Peplink Cellular SIM Card Injector (4G),
 - Starlink,
 - 15 x WiFi Access Point Dual-band 2.4 & 5 Ghz/6 Ghz
 - WiFi 6

DECK EQUIPMENT

- Anchor Windlass: 2 x MUIR VRC20000 Vertical Windlass
- Capstans: 2 x MUIR VC18000
- Anchors: 2 x Haren-Groningen TW Fully Balanced High Holding Power Anchor 855 kg
- Anchor Chains: 2 x 275m each, 32mm
- Boat Crane & Davits: 2 x Structor (aft) 3000 kg each + 1 x Nautical-Structures EZ-5500-LD-EX-250-310-SOLAS 2495 kg (bow)
- Gangway: J. Van der Velden 625 NB
- Swimming Pool / Jacuzzi (aft): Custom Made 12 tons / water jets / heating / endless pool swim current (adjustable speed)
- Swimming Ladder: Custom Made
- Swim Platform: Custom Made
- Awnings: Custom Made
- Covers: Custom Made



EQUIPMENT

ENTERTAINMENT EQUIPMENT

Main Salon:

- 60" LG OLED TV
- Erard Fixit400 Wall Support for TV
- Apple TV 4K Media player for movies, TV, Music & Akumendo app
- Yamaha RX-A4A Amplifier 11.2 Dolby Atmos 11 x 150W HDMI 4K/8K
- Yamaha R-N600A Amplifier Stereo 100W for Card Corner

Main Dining:

- Yamaha R-N600A Amplifier Stereo 100W for Card Corner

Main Deck Aft:

- 60" LG OLED TV
- Yamaha XAD-QS5400RK 8 Channels Amplifier, Airplay 2, 8 Inputs, Multiroom (Sundeck, Aft, Fwd)
- Apple TV Media Center Gen 4

Private Lounge:

- 43" LG OLED TV
- Erard Fixit400 Wall Support for TV
- Yamaha RX-A2A Home Cinema Amplifier 5.2 Dolby 80W HDMI 4K Airplay 2
- Apple TV 4K Media player for movies, TV, Music & Akumendo app
- SUB Mini Subwoofer

Owner Entrance Lobby:

- 43" LG OLED TV
- Erard Fixit400 Wall Support for TV
- Apple TV 4K Media player for movies, TV, Music & Akumendo app

Owner's Suite:

- 55" LG OLED TV
- Erard Fixit400 Wall Support for TV
- Yamaha RX-A4A Amplifier 11.2 Dolby Atmos 7 x 150W HDMI 4K/8K
- Apple TV 4K Media player for movies, TV, Music & Akumendo app

4 x Twin Cabins:

- 40" LG OLED TV
- Erard Fixit200 Wall Support for TV
- Apple TV 4K Media player for movies, TV, Music & Akumendo app

Crew Mess:

- 32" Smart Led TV
- Erard Fixit200 Wall Support for TV
- Yamaha RX-A2A Home Cinema Amplifier 5.2 Dolby 80W HDMI 4K Airplay 2
- Apple TV 4K Media player for movies, TV, Music & Akumendo app



EQUIPMENT

ENTERTAINMENT EQUIPMENT

Captain's Cabin:

- 32" Smart Led TV
- Erard Fixit200 Wall Support for TV
- Apple TV 4K Media player for movies, TV, Music & Akumendo app

Nanny Cabin:

- 32" Smart Led TV
- Erard Fixit200 Wall Support for TV
- Apple TV 4K Media player for movies, TV, Music & Akumendo app

Speakers:

- 6 x Sonance XTR-6R Exterior Speakers (3 x Aft + 3 x Fwd)
- Galley - Owner's Laundry - Chef Cabin - ECR - Laundry: 5 x Yamaha Musicast 21 Airplay 2 Loudspeaker

Miscellaneous & Additional Equipment:

- 20 x Norstone Set of Cables HDMI 4K 2 m
- 70 x Norstone Patch Panel Cables Renewal
- Misc. Equipment - Accessories - Cables

GALLEY & LAUNDRY EQUIPMENT

- 1 x Panasonic Pro II NE-3208 Microwave
- 1 x RATIONAL Commercial Oven
- 1 x MKN Commercial Oven
- 2 x Scott Ceran Stove (4 + 2 Cooking Tops)
- 2 x MKN Deep Fryer
- 1 x MKN BBQ Grill
- 2 x FOSTER Professional Refrigerator
- 1 x FOSTER Professional Freezer
- 1 x Scotsman AC 56 Ice Maker
- 1 x Winterhalter GS 315 Dishwasher
- 1 x Plastic Compactor
- 1 x Kenwood Cooking Chef XL 6.7 L Induction
- 1 x Robot Coupe Ice-cream Machine
- 1 x Bimby WorkWerk Robot
- 1 x Italservice Stresa Electric Slicer
- 1 x Hendi Stand Mixer / Juicer
- 1 x Walk-in Refrigerator
- 1 x Walk-in Freezer
- 3 x Miele (1 x guests + 2 x crew)
- 4 x Miele Dryers (2 x guests + 2 x crew)



EQUIPMENT

SECURITY & SAFETY EQUIPMENT

SAFETY

- SOLAS Rescue Tender
- Kahlenberg 3-6219 M-511A Whistle Control
- BNWAS: Furuno BR530 & Furuno BR560
- 6 x Life Raft (16 pers. each)
- 32 x Life Jackets + 4 x Life Jackets for children

SECURITY

- 16 x NVR CCTV cameras with 4TB Hard Drive
- 1 x Zyxel GS1920-24PoE Switch 24 ports POE
- 10 x Hikvision DS-2CD2523 Fix mini dome camera 4MP IP66 IK10
- 1 x Hikvision DS-2DE2A404 PTZ 360° dome camera 4MP IP66 IK10 for Ext. Aft Deck
- 1 x Hikvision DS-DF8442IXS PTZ 360* dome camera 4K IP67 IK10 for Mast with 1663ZJ ceiling mount short
- 1 x Hikvision DS-1600KIB Touch and detachable network keyboard with Joystick and HDMI Output

FIRE FIGHTING

- 2 Main + 1 Emergency Hi-Fog SPU Nitrogen System with separate circuits for the galley and walk-in fridge
- 10 x Fire Hydrant
- 10 x 18 m Fire Hose
- 26 x Fire Extinguisher (20 x Foam + 6 x CO2)
- 3 x Powder Fire Extinguisher
- 2 x Fire Suits

TENDERS & WATERSPORTS EQUIPMENT

TENDERS

- 1 x Zodiac Hurricane with 2 x Volvo Penta D6, 301 HP each, 702h Port/ 740h Stbd
- 1 x Zodiac Hurricane P560 with 1 x Volvo Penta D3, 160 HP, 365h

WATER SPORTS

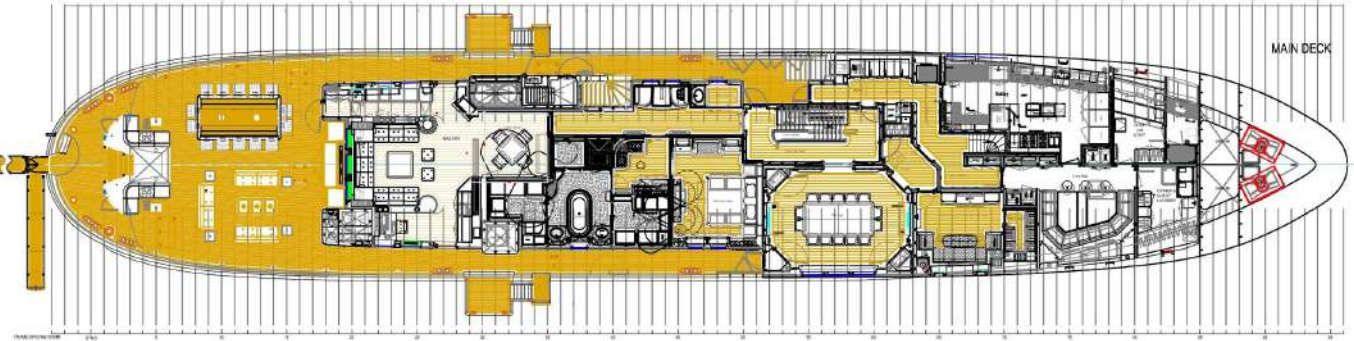
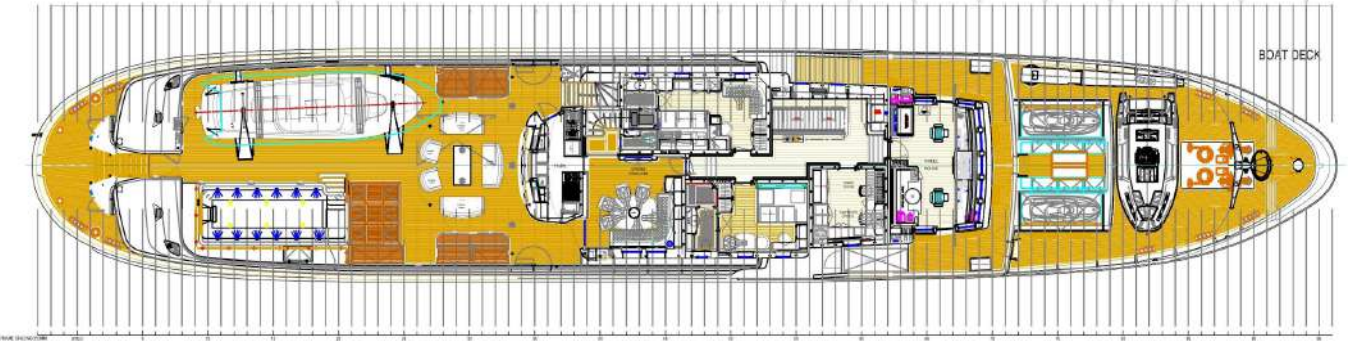
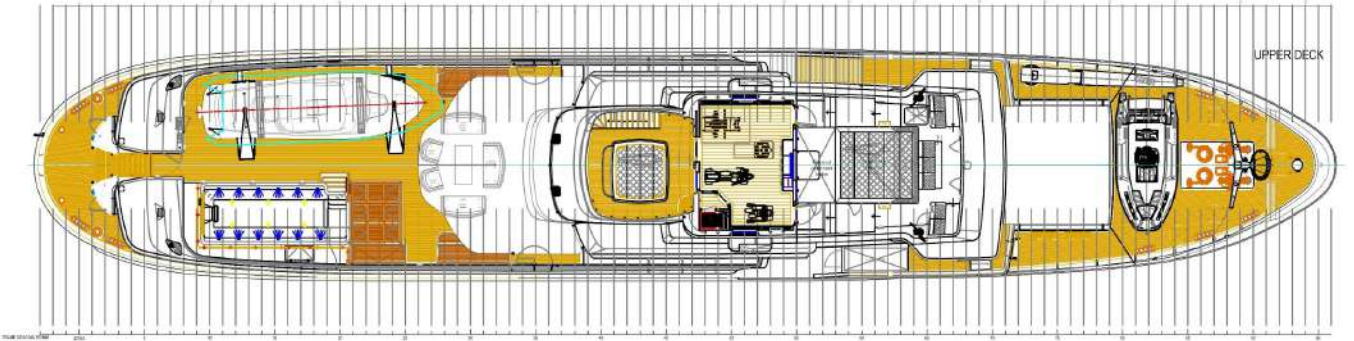
- JetSki WaveRunner Yamaha FX160 Cruiser, 160 HP, 43h
- 2 x SeaBob F5S
- 3 x Inflatable Paddles
- 2 x Inflatable Canoe

DIVING

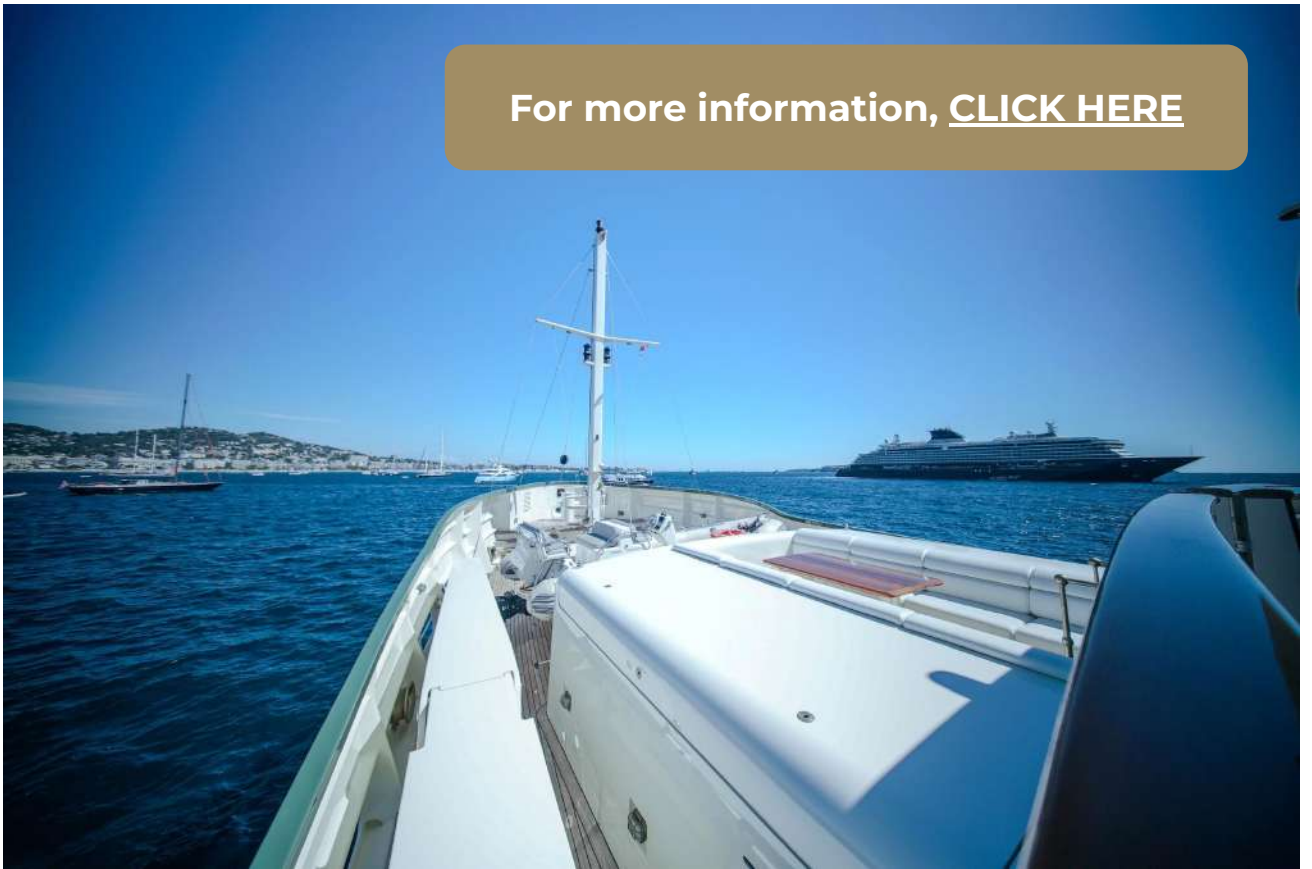
- 2 x Diving Equipment Sets
- 2 x Snorkeling Equipment Sets



LAYOUTS



For more information, [CLICK HERE](#)



breezeYachting swiss





EMMA KARANOVA

Yacht Advisor

 WHATSAPP ME

m. [+41 79 702 7262](tel:+41797027262)

emma@breezeyachting.swiss



Jérémy Solodilow

Yacht Advisor

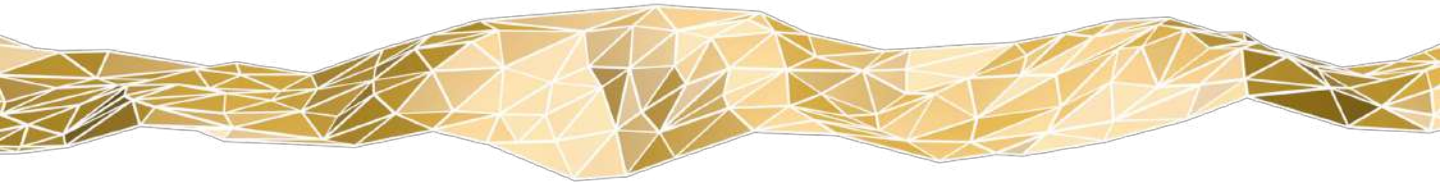
 WHATSAPP ME

m. [+33 612 323 886](tel:+33612323886)

jeremy@breezeyachting.swiss

breezeYachting.swiss

WE SPEAK YACHTING. LET'S TALK.



Switzerland ● Malta ● Spain ● Monaco ● St. Tropez

www.breezeyachting.swiss

DISCLAIMER

The company offers the details of this vessel in good faith but cannot guarantee or warrant the accuracy of this information nor warrant the condition of the vessel. A buyer should instruct his agents, or his surveyors, to investigate such details as the buyer desires validated.

This vessel is offered subject to prior sale, price change or withdrawal without notice.