

breezeYachting.swiss



# Pershing 92 'DORIS'

€3'550'000 EUR VAT Paid | 28m | 2012

# KEY POINTS

- Has only had 1 experienced owner
- Turnkey Condition
- Technical Reports available upon request



# SPECIFICATIONS

<b>Builder:</b>	Ferretti S.P.A.
<b>Model:</b>	Pershing 92
<b>Model Year:</b>	2012
<b>Flag:</b>	French
<b>Hull/Superstructure:</b>	GRP
<b>Exterior Design:</b>	Fulvio De Simoni
<b>Length overall:</b>	27,96 m / 91 ft 9 in
<b>Beam:</b>	6,23 m / 20 ft 5 in
<b>Draft:</b>	1,85 m / 6 ft
<b>Displacement:</b>	81.40 tons
<b>Guests:</b>	8
<b>Guest Cabins:</b>	4
<b>Configuration:</b>	1 Master Staterooms; 3 Guest Cabins;
<b>Heads:</b>	4
<b>Crew Cabins:</b>	2
<b>Crew:</b>	3
<b>Engines:</b>	2 x MTU 16V2000 M94
<b>Engine power:</b>	2 x 2,638 HP
<b>Engine hours:</b>	± 942 hrs (Port) / ± 931 hrs (Stb)
<b>Gear box:</b>	ZF 3070
<b>Drive Type:</b>	Twin Surface Drives SeaRex
<b>Fuel Type:</b>	Diesel
<b>Generator:</b>	Fischer Panda 30kva
<b>Generators hours:</b>	±2228 hrs (Port) & ±1985 hrs (Stb)
<b>Max Speed:</b>	42 kn
<b>Cruising Speed:</b>	35 kn
<b>Fuel Tank:</b>	9.580 l









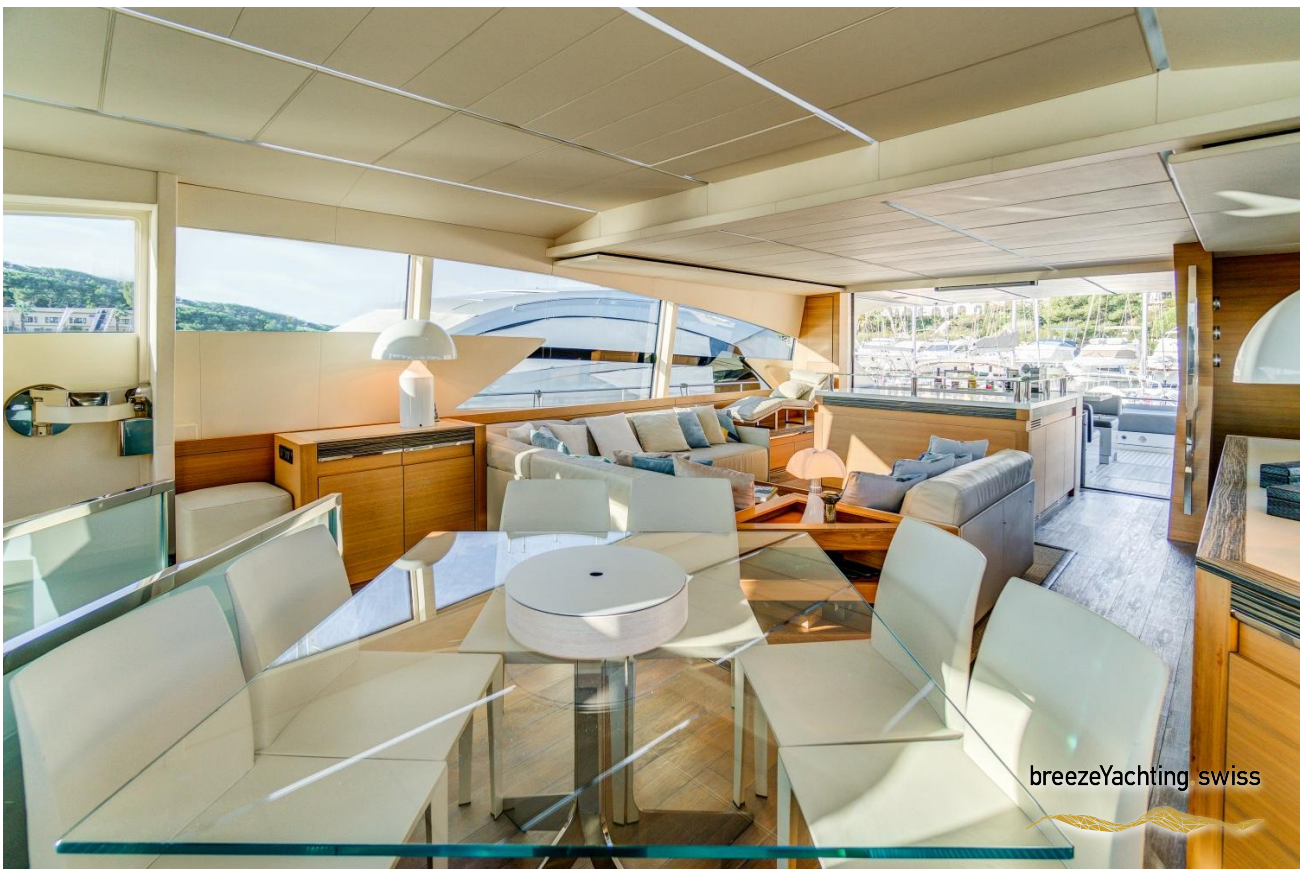


breezeYachting.swiss









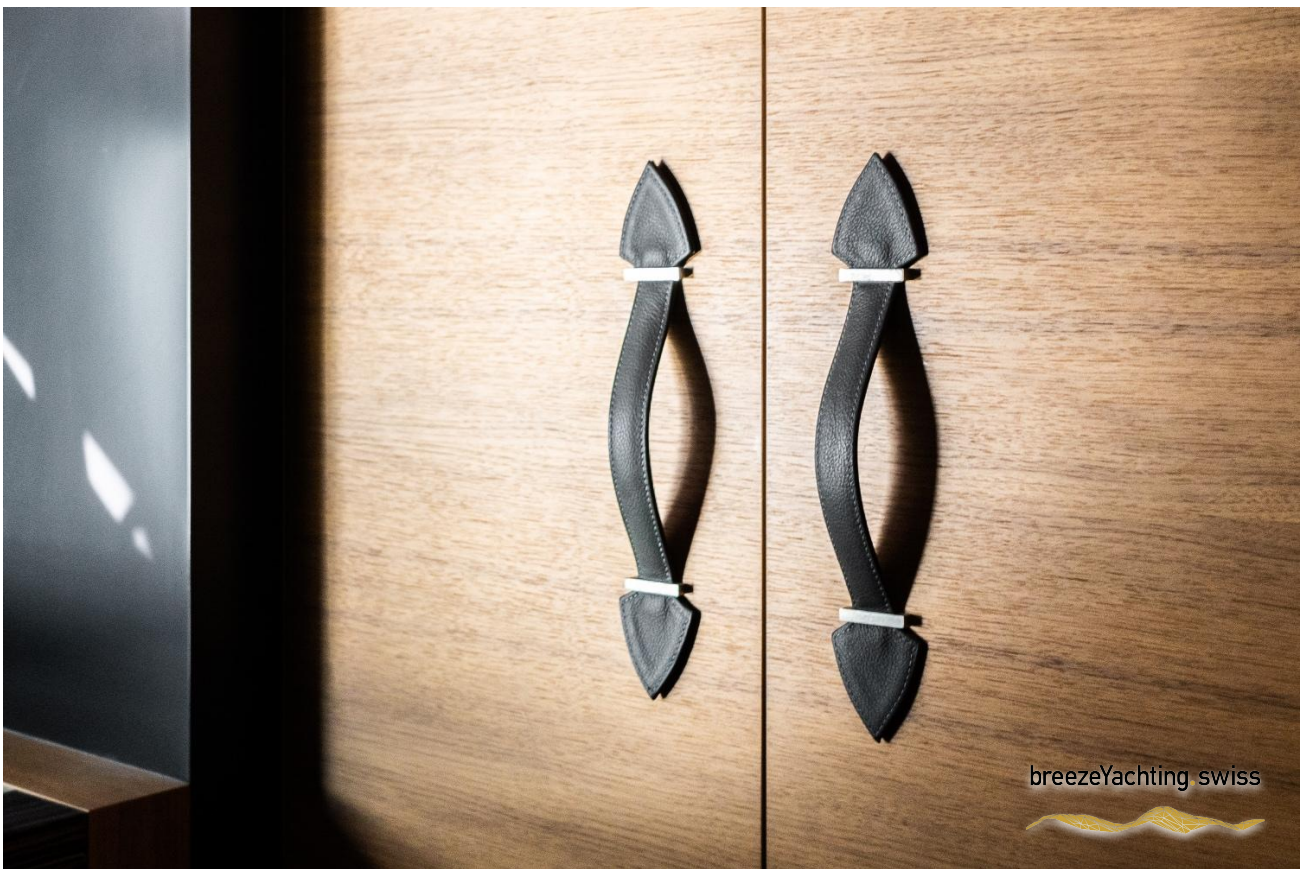


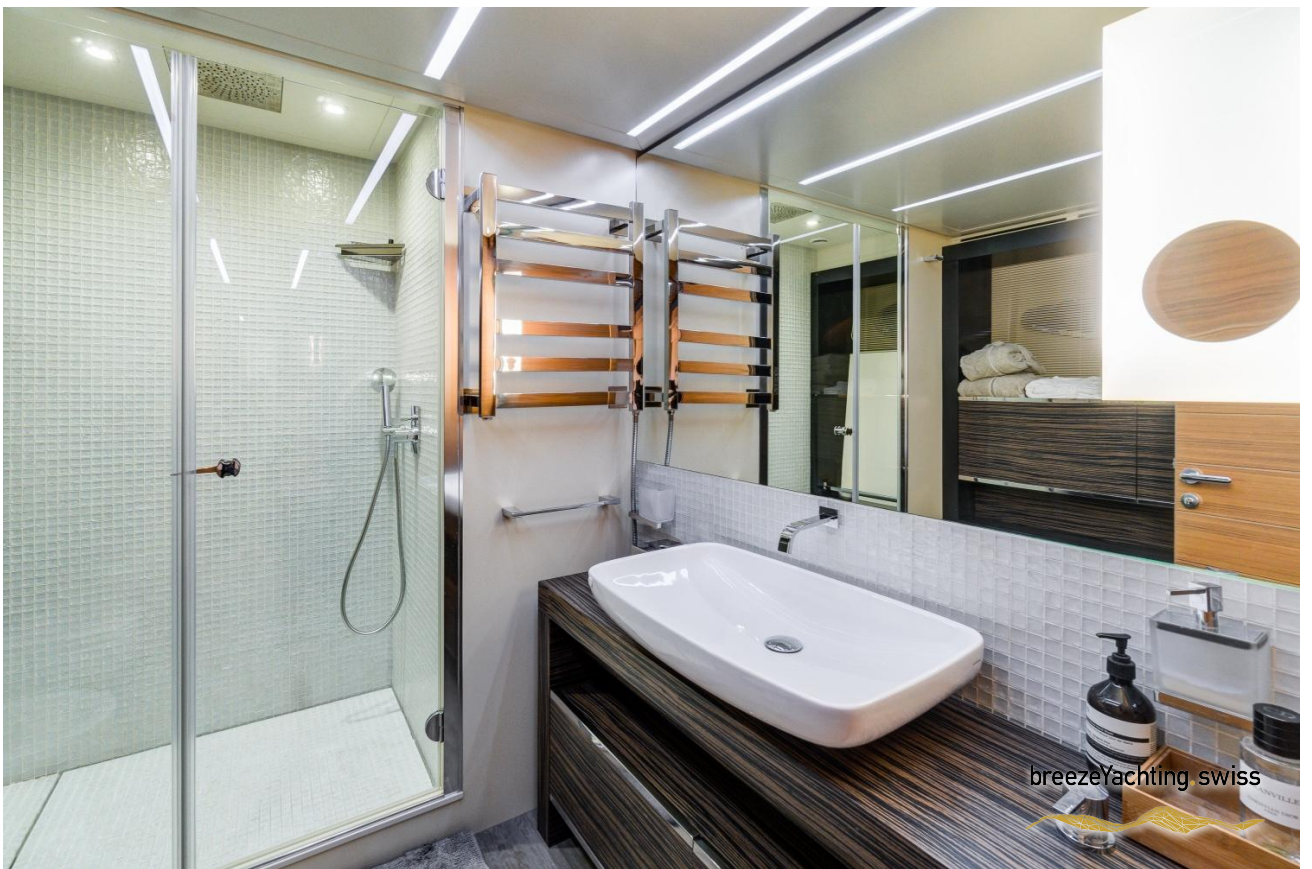




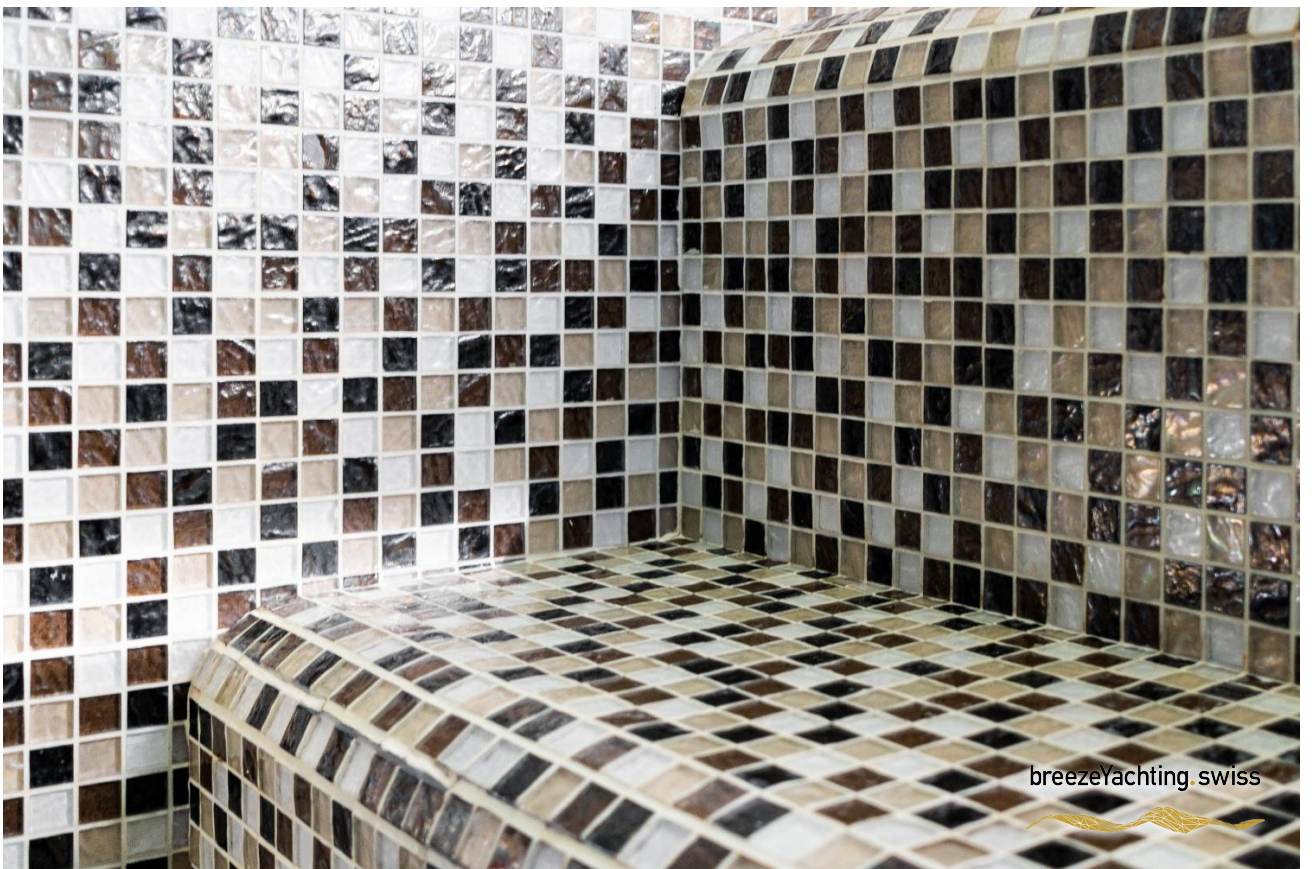


















# EQUIPMENT

## Machinery

- Air Conditioner Type: CONDARIA 180,000 BTU
- Watermakers: IDROMAR 300 L/H
- Trim Tabs-Stabilisers: Automatic SeaRex
- Bow thrusters: Parker Hydraulic PTO
- Steering System: SeaRex
- Fuel Separator & Filtration: Parker Diesel Fuel Filters

## Navigation Systems

- Radars: Furuno Navnet 3D MFDBB
- Magnetic Compass: Riviera Genova White Star
- Auto Pilot: Furuno Nav Pilot (FAP-7002)
- Depth Sounder: Furuno DFF1
- Night Vision: FLIR
- GPS: Furuno
- Plotter: Navnet 3D
- Wind-Speed Log: Furuno FI-50
- AIS: Furuno FA-50

## Communication Systems

- Satcom: KVH G8
- VHF: Furuno FM 2721
- Cellular Phone System: Inmarsat Iridium

## Deck and Hull

- Anchor Wind Glass: Lofran's ProjectX4
- Aft Warping Capstands: Lofran
- Anchor: TREFOIL 80kg
- Anchor Chains: Port 90m / Stb 110m
- Passerelle: Bensenzoni

## Tender & Toys

- Tender: Williams Projet 385
- Water Toys: Jet SeaDoo BRP RXP 250

# EQUIPMENT

## Generators & Electricity

- Output: 230 V
- Generators: Fischer Panda 30 Kva
- Generator Hours: ±2228 hrs (Port) / ±1985 hrs (Stb)
- Fuel Consumption: 14 L p/hr
- Shore Power: 230 V 45 kW

## Batteries

- Main Engines Starting: 4 x 12V 210Ah
- Generator Starting: 2 x 12V 100Ah
- Service: 12 x 12V 640Ah

## Entertainment Systems

- Video Equipment: Samsung 42'
- Audio Equipment: SONOS / RTI
- Cabin Equipment: Samsung / Bose
- Internet: PEPWARE

## Galley & Laundry

- Cooking Equipment: MIELE
- Refrigerator/Freezer: BOSCH
- Washer/Dryer: Miele Softronic W3205 / Softronic T8403C

## Security & Safety

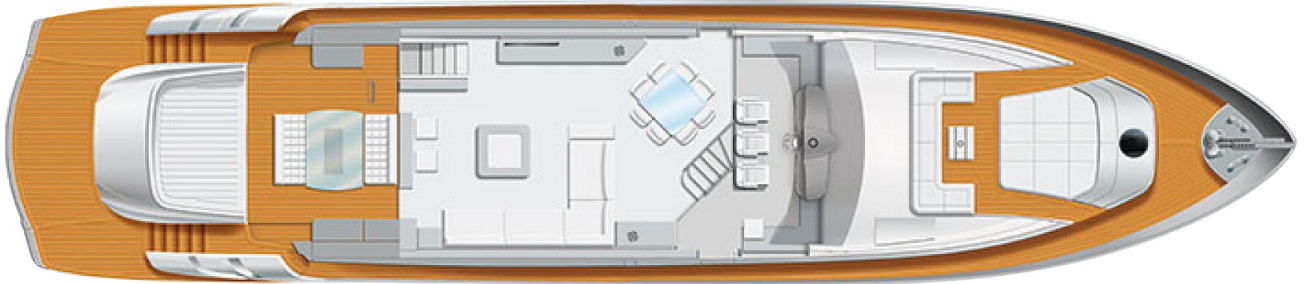
- Security Equipment:
- CCTV Systems: NAVIOP Yachtica
- Cameras and Monitors
- Life Rafts: Arimar Oceanic 8 pax
- Epirbs: Aqualinks PLB-350B

## Fire Fighting Equipment

- Fire Control System: FM 200 40kg
- Fire Extinguishers:
  - 8 x 1kg PABC
  - 1 x 6kg PABC
  - 1 x 2kg DIOXYDE
  - 1 x 5kg DIOXYDE



# LAYOUTS





For more information, [CLICK HERE](#)



breezeYachting swiss





**CORNELIUS KISTLER**

Founder & CEO

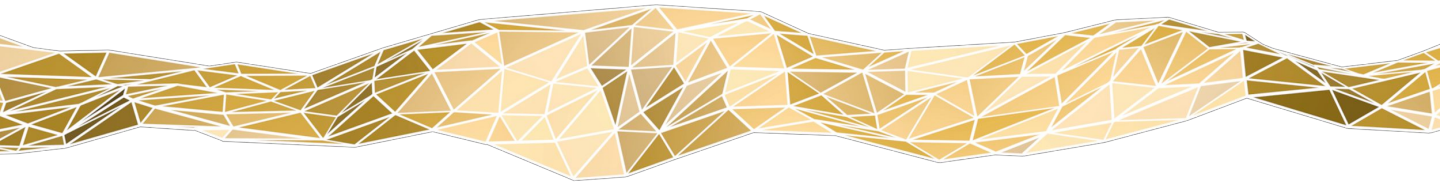
 WHATSAPP ME

m. +41 79 702 7000

[ck@breezeyachting.swiss](mailto:ck@breezeyachting.swiss)

# breezeYachting.swiss

WE SPEAK YACHTING. LET'S TALK.



Switzerland ● Malta ● Spain ● Monaco ● St. Tropez

[www.breezeyachting.swiss](http://www.breezeyachting.swiss)

#### DISCLAIMER

The company offers the details of this vessel in good faith but cannot guarantee or warrant the accuracy of this information nor warrant the condition of the vessel. A buyer should instruct his agents, or his surveyors, to investigate such details as the buyer desires validated.

This vessel is offered subject to prior sale, price change or withdrawal without notice.