

breezeYachting swiss



Princess 23M 'WET ASSET'

€925'000 incl. VAT | 23m | 2003

Introducing Wet Asset, a vessel designed for comfort and practicality on the water. With a spacious open-plan main deck layout, she offers a seamless transition between interior and exterior spaces, shaping the perfect setting for enjoying your time at sea.

Featuring three cabins, each with its own en-suite bathroom, this 23M Princess provides a convenient overnight stay for 6 guests. The master cabin boasts a walk-in wardrobe, adding a touch of luxury to your cruising experience. Those who prioritize work-life balance will find solace in the separate office, allowing them to manage business affairs while traveling.

One of the unique features of Wet Asset is the rise & fall window on the aft cockpit, which creates an al fresco feeling when you're inside the boat.

The flybridge, accessible directly from the saloon, benefits from a crane for easy handling of water toys or equipment and serves as a great tanning spot thanks to generous sun pads.

Manoeuvring is smooth with bow and stern thrusters, while the third station on the stern streamlines operations, making it easier to dock the boat in various scenarios.

With well-maintained interior woodwork and reliable craftsmanship, this yacht represents a harmonious blend of pleasure and utility, sure to captivate boating enthusiasts of all kinds.



SPECIFICATIONS

Builder:	Princess
Model:	23m
Year built:	2003
Hull/Superstructure:	GRP
Deck material:	Teak
Length overall:	22.83 m
Beam:	5.71 m
Draft:	1.6 m
Displacement:	51.9 GT
Guests:	6
Staterooms:	3
Heads	5
Crew:	2
Crew cabins:	1
Engines:	2 x MAN V12 D2842 LE 404, 1300 HP
Total power:	2600 HP
Engine hours:	1200 (as of May 2024)
Generators:	2 x Onan 22.5kW/220v/50hz
Fuel tank:	5,819 l
Fresh water tank:	1,386 l



KEY POINTS

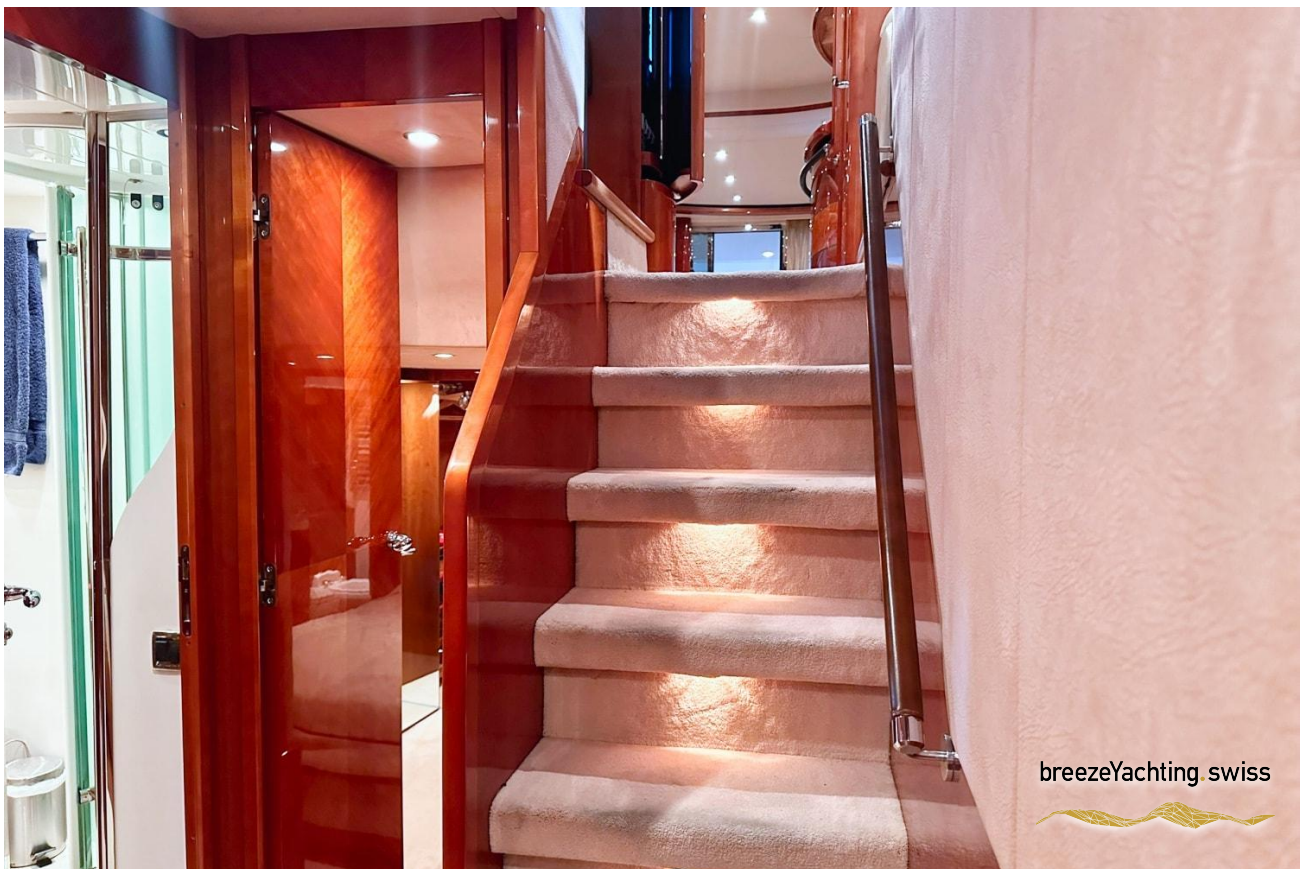
- Large open-plan interior
- Interior wood in excellent overall condition
- Bow and stern thrusters
- Crane on the flybridge











breezeYachting swiss

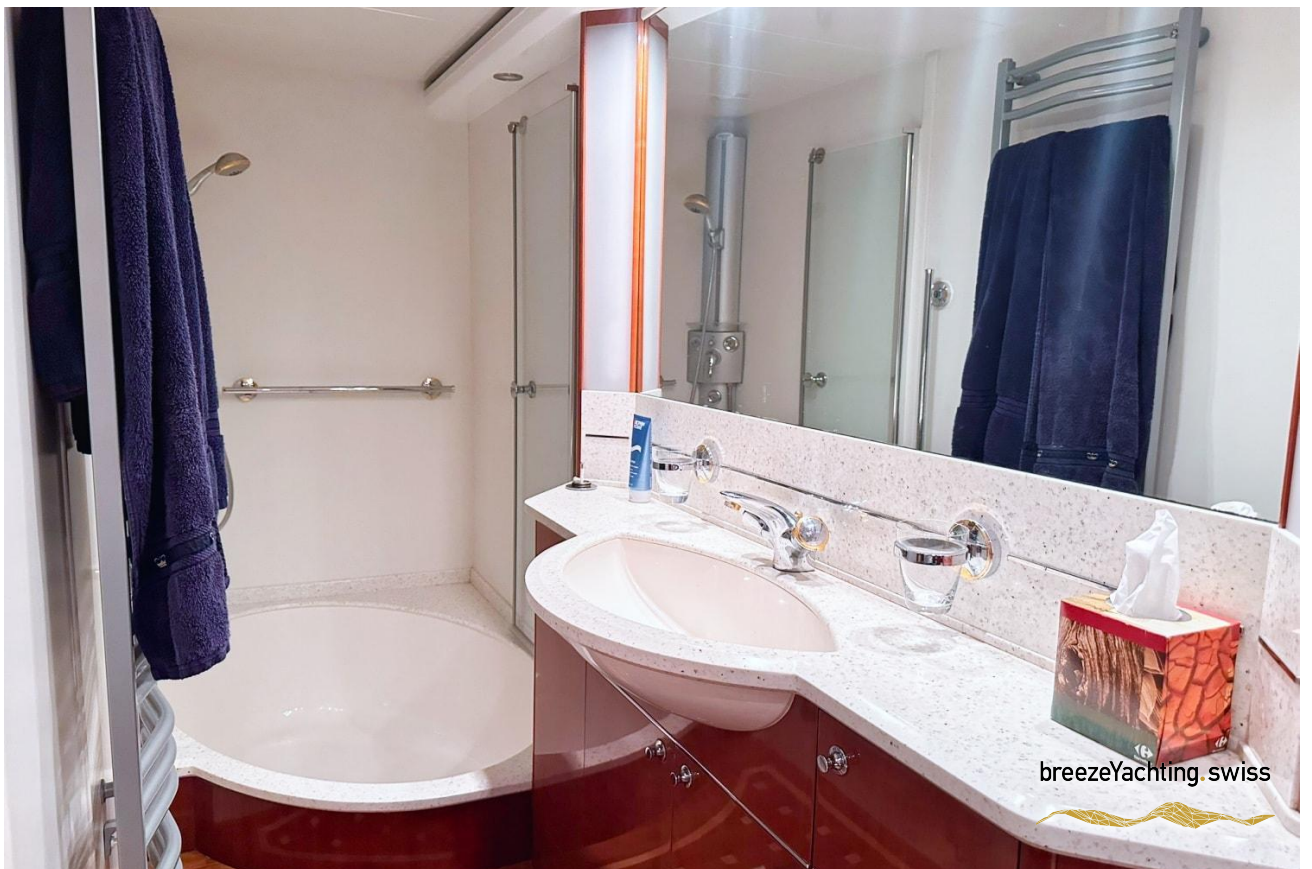






breezeYachting swiss











EQUIPMENT

Interior Arrangements

- 6 berths in 3 cabins
- 4 heads (3 en-suite)
- Dedicated office in lieu of starboard cabin
- 2 berth crew cabin with separate head
- Natural cherry high gloss woodwork
- Desk in portside of owners suite
- Saloon upholstery in light brown
- “Betel white” galley worktop
- “Oceania Sand” carpets throughout
- Black leather helm seats
- Forward dinette

Interior Equipment

- Dishwasher in galley
- Icemaker in saloon
- Freezer in galley
- Central vacuum system
- Heated towel rail in owners WC
- Mosquito screens for portholes
- Washing machine and tumble dryer
- Saloon plasma TV with hi/lo lift system
- Surround sound hi-fi system
- KVH satellite TV system with G6 antenna
- Capsat 77 satellite phone system
- LCD TV & DVD in forward and owners cabins



EQUIPMENT

Navigation Equipment

- Furuno NAVnet combined radar/plotter/GPS with open scanner and two 10.4" colour screens at both helm positions (total 4)
- Furuno Fax 30 Weather fax linked to NAVnet system
- Dual station autopilot
- Raymarine ST60 dual station speed log
- Raymarine ST60 dual station depth gauge with alarm
- Dual station VHF radio

Deck Equipment

- Side entry gates to both side decks
- Flybridge bimini cover
- Telescopic passerelle 3.2m with remote control
- Flybridge tender crane (420kg)
- 2x Stern rope handling winches
- Stern garage with hydraulic opening door
- Hydraulic flybridge helm console
- Rexroth electronic engine control system
- Trim tabs with dual station controls



EQUIPMENT

Safety and Security

- 3rd Station controls in cockpit locker
- Bow thruster (25hp) with dual controls
- Stern thruster (15hp) with dual controls
- Intercom system to all cabins and flybridge
- Central vacuum system
- KVH Satellite TV system with G6 antenna
- Satellite communication system phone / internet
- CCTV system with 2x cameras in engine room and one located in aft cockpit

Safety and Security

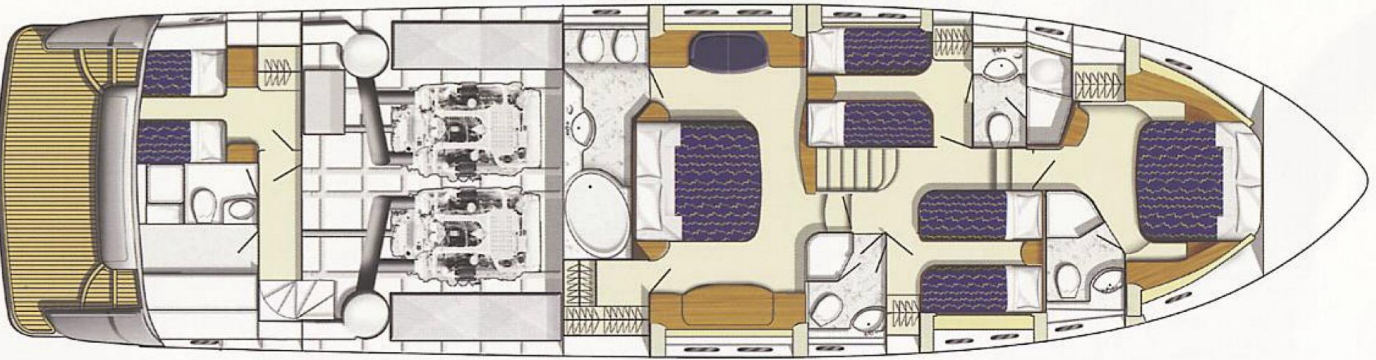
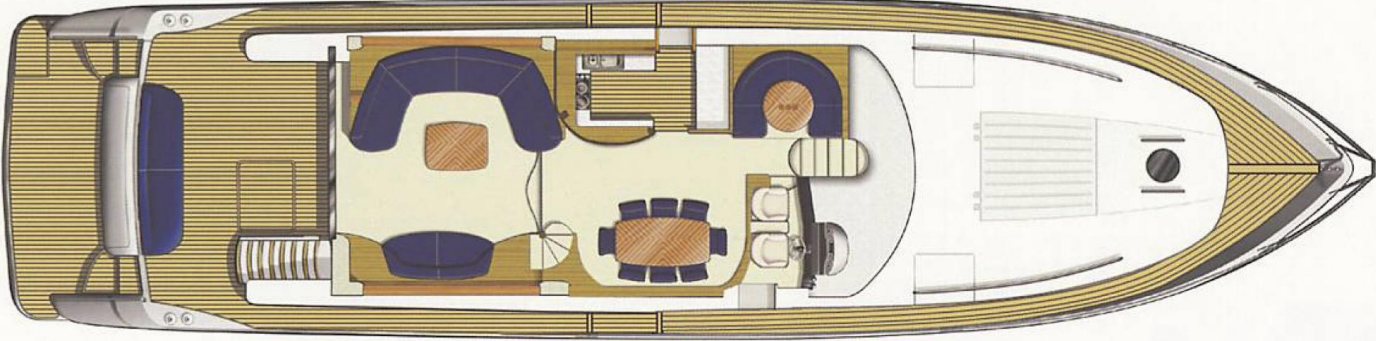
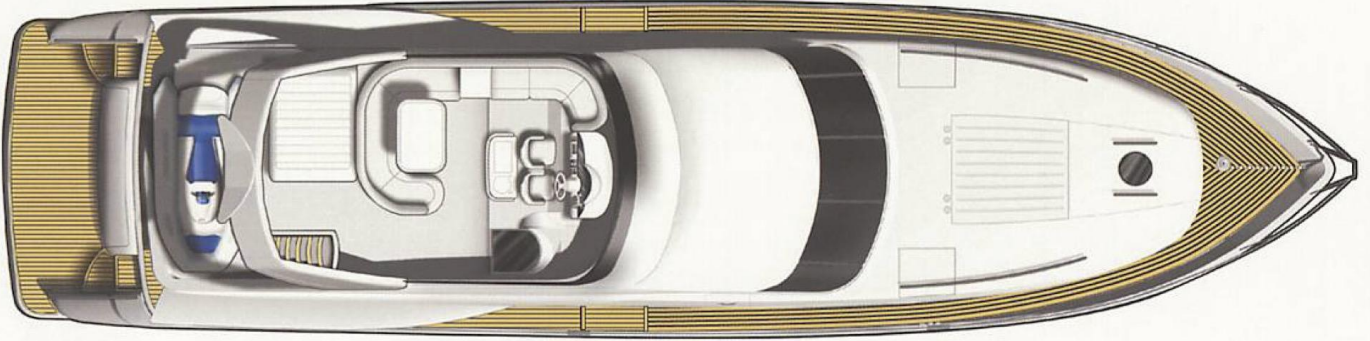
- Automatic fire extinguishers in engine room, lazarette and electrical space
- Manual fire extinguishers in all cabins
- 7x automatic electric bilge pumps
- High capacity manual bilge pump

Water Toys

- JetSki 80 HP (only 1h on engine)



LAYOUTS





For More Info, [CLICK HERE](#)



breezeYachting.swiss





INNA VOLOSHINA

Yacht Advisor

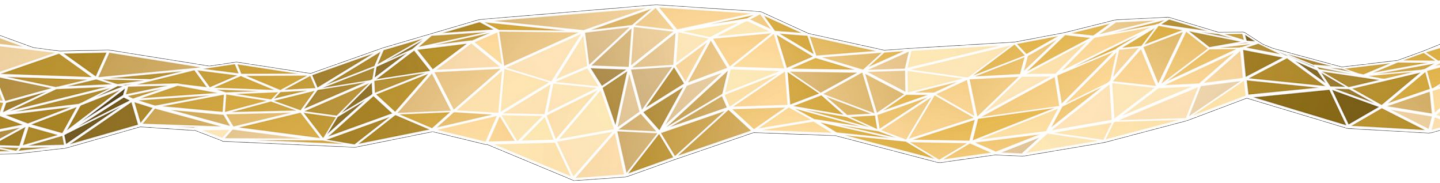
 WHATSAPP ME

m. [+34 603 475 840](tel:+34603475840)

iv@breezeyachting.swiss

breezeYachting.swiss

WE SPEAK YACHTING. LET'S TALK.



Switzerland ● Malta ● Spain ● Monaco

www.breezeyachting.swiss

DISCLAIMER

The company offers the details of this vessel in good faith but cannot guarantee or warrant the accuracy of this information nor warrant the condition of the vessel. A buyer should instruct his agents, or his surveyors, to investigate such details as the buyer desires validated.

This vessel is offered subject to prior sale, price change or withdrawal without notice.