

breezeYachting.swiss



Sanlorenzo SD112 'ZULU 3'

EUR 7'750'000 VAT paid | 34.10m | 2017

KEY POINTS

- Highly successful semi-displacement Sanlorenzo SD112 series, known for its performance and luxury.
- Impressive overall condition, meticulous maintenance, and high specifications
- Completed her 5-year survey in 2022, ensuring she meets stringent safety and quality requirements
- Used privately and has never been chartered, maintaining a higher standard of care and exclusivity.
- Managed by a highly experienced crew who have kept her in excellent condition



Built in 2017, ZULU 3 is part of the successful semi-displacement Sanlorenzo SD112 series. Purchased by her current owner in 2018, she is only in her second ownership. The yacht stands out for her excellent condition, meticulous maintenance, and high specifications.

Built to RINA Class standards, ZULU 3 completed her 5-year survey in 2022. She has only been used privately and never chartered. Managed by an experienced crew, she presents as a much newer vessel, and the crew is available to continue with a new owner.

ZULU 3 is ready for her new owner to embark on extensive adventures. As the current owner is taking a break from yachting, the sale includes all bedding, towels, tableware, spares, and more. For more information on this incredible SD112, we highly recommend viewing.





breezeYachting.swiss











breezeYachting swiss









breezeYachting swiss







breezeYachting.swiss





SPECIFICATIONS

Builder:	Sanlorenzo
Model:	SD112
Model Year:	2017
Flag:	Malta
Hull/Superstructure:	GRP
Class:	RINA Commercial Class – 5-year survey in 2022
Length overall:	34.10 m
Beam:	7.66 m
Draft:	2.12 m
Displacement:	185 T
Tonnage:	266 GT
Cabins:	4
Configuration:	Master Cabin + VIP Cabin + 2 x Guest Cabin
Guests:	8
Crew:	5
Crew Cabins:	3
Engines:	TWIN MTU 10V2000 M72
Engine hours:	3135 h
Engine power:	2 x 1224 HP
Fuel Type:	Diesel
Generators:	2 x Kohler 55kW
Generator hours:	6300 h
Maximum Speed:	16 kn
Cruising Speed:	12 kn
Economy Speed:	10 kn
Range:	2600 nm
Fuel consumption:	50 l/h @ 10 kn
Sabilizers:	CMC Electric stabiliser fins with zero speed
Fuel Tank:	41707 l
Water Tank:	4200 l
Black Water:	2100 l





breezeYachting swiss















breezeYachting swiss









OPTIONS

NAVIGATION EQUIPMENT

Wheelhouse:

- Three Raymarine GS195 displays
- Two Raymarine VHF's
- Two Raymarine A65 MFDs
- Simrad autopilot
- Display for the ship monitoring system
- MTU displays

Flybridge:

- Raymarine Axiom multi-function display
- Simrad autopilot control
- Raymarine A35 MFD
- Raymarine VHF

General:

- Raymarine Super HD open array radar
- Raymarine dome radar
- Searchlight
- Wind anemometer
- Flir thermal camera
- Raymarine cameras – cockpit, control room, port & stbd decks & Flir infrared to engine room

SAT & COMM System:

- 4G/5G WiFi system and Starlink (RV) antenna via Draytek router
- Eight Wi-Fi access points throughout boat
- KVH TV8 Trac Vision Sat dome
- KVH V7 IP Tracphone Sat dome

GENERAL EQUIPMENT

- Marquip 8 step side ladder
- Passarelle with twin handrails
- Compressed air system with outlets to garage, flybridge, bow and engine room
- Array of spare parts for systems throughout boat
- Vast selection of tools
- Lightning conductor to navigation mast
- Inflatable fenders with fender hooks
- Assortment of mooring warps
- Underwater lights to transom and side of hull
- Hydraulic swim platform
- Tender launch system

GROUND TACKLE

- Two ultra hold anchors
- Port and starboard Lewmar anchor capstans
- Galvanised chain; port 120m & stbd 140m
- Chain/bow locker with storage

SAFETY & SECURITY EQUIPMENT

- As per class certification including two liferafts

ALARMS & SECURITY

- Porthole alarm system
- Senica SMS alarm system – shore power, bilge etc
- Autoprime fire alarm system



OPTIONS

TENDERS & TOYS

- Williams 445 diesel jet
- Two Seabobs
- Two inflatable SUPs
- Inflatable chair
- Nautibouy Party Bana inflatable platform
- Two inflatable Seabob holders
- Electric pump for inflate/deflating toys

AWNINGS & COVERS

- Aft flybridge sun awning
- Forward flybridge sun awning
- Aft upper deck sun awning
- Cockpit privacy cover
- Wheelhouse windscreen mesh cover
- Full set of covers for external furniture

AUDIO/VIDEO EQUIPMENT

- Full custom Creston AV system on board, standard speaker fixings are blanked and all areas have been upgraded with both upgraded and additional speakers.
- TVs to all areas and each area has a designated iPad for controlling AV, lights and blinds.

ELECTRICAL SYSTEMS

- Two 55kw Kohler generators
- Hours run approx. 6,300 – serviced every 250 hours and injectors
- replaced at 5,000 hours
- Glendinning cable master
- Mastervolt smart chargers for all battery banks – engine/generator/service
- Inverter

MACHINERY

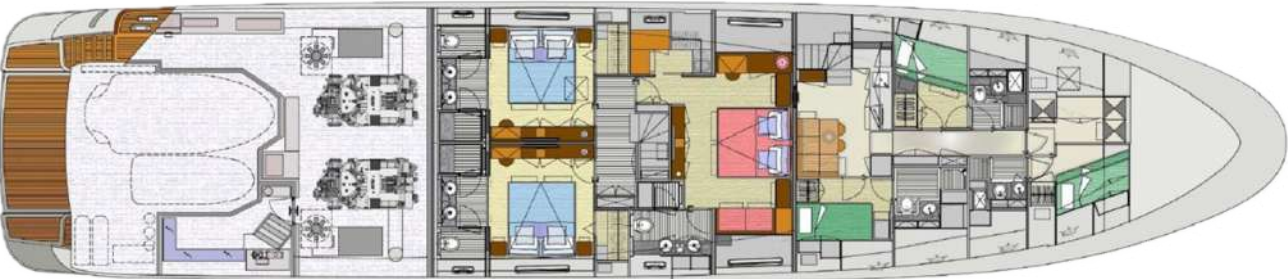
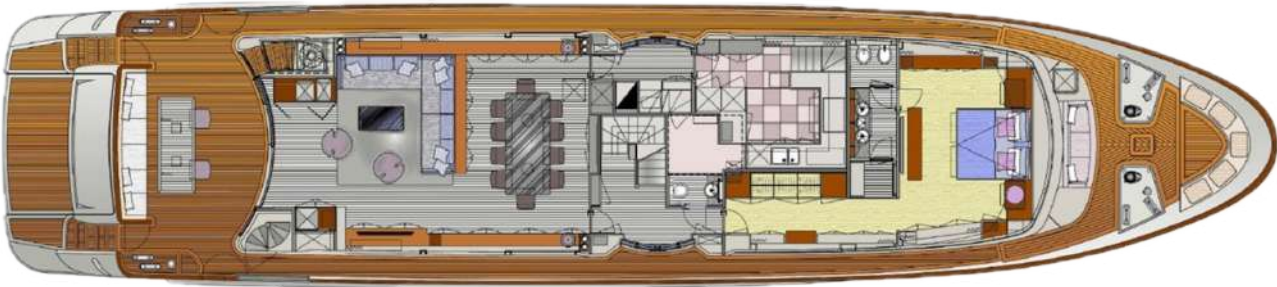
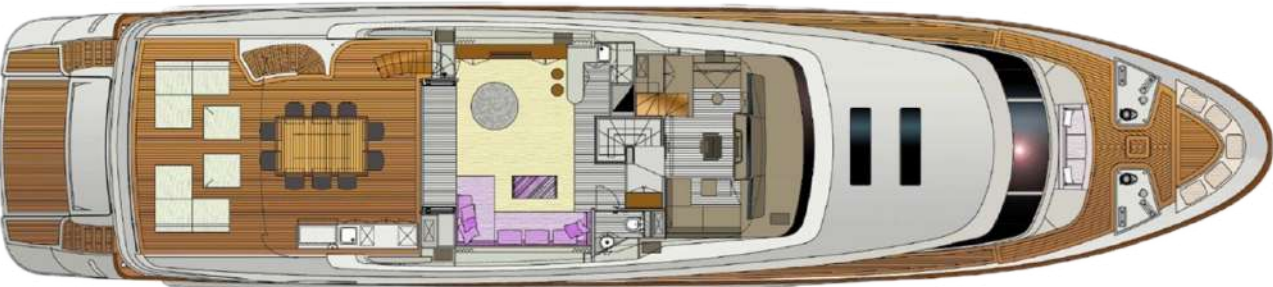
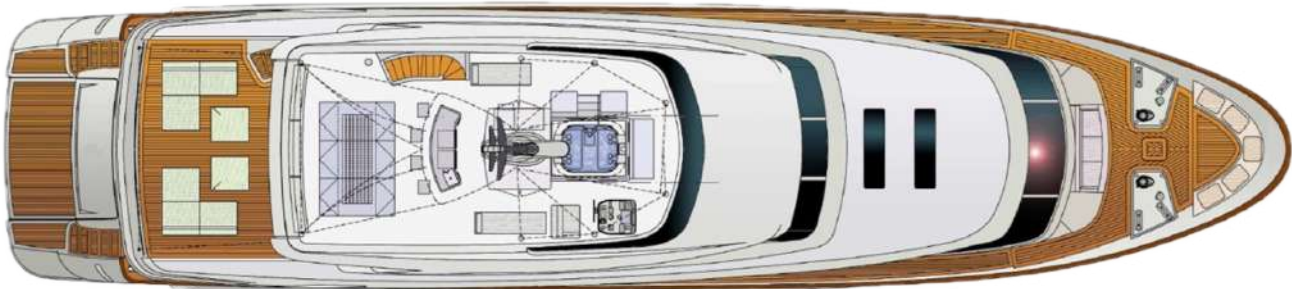
- TWIN MTU 10V2000 M72 – 1224HP
- Shaft drive to 5-blade propeller
- Hours run approx. 3,135 h
- Engines serviced annually; hours run at last service 3,021 h
- Maximum speed approx. 16 knots
- Cruising speed approx. 12 knots
- Economical speed approx. 10 knots
- Max. range at economical speed approx. 2,600 nm
- Consumption – 50 l/hr @ 10.8 knots
- MTU engine remote with two locations
- Electric CMC bow thruster
- CMC Electric stabiliser fins with zero speed function
- Electric oil pump for engines, gearboxes and generators

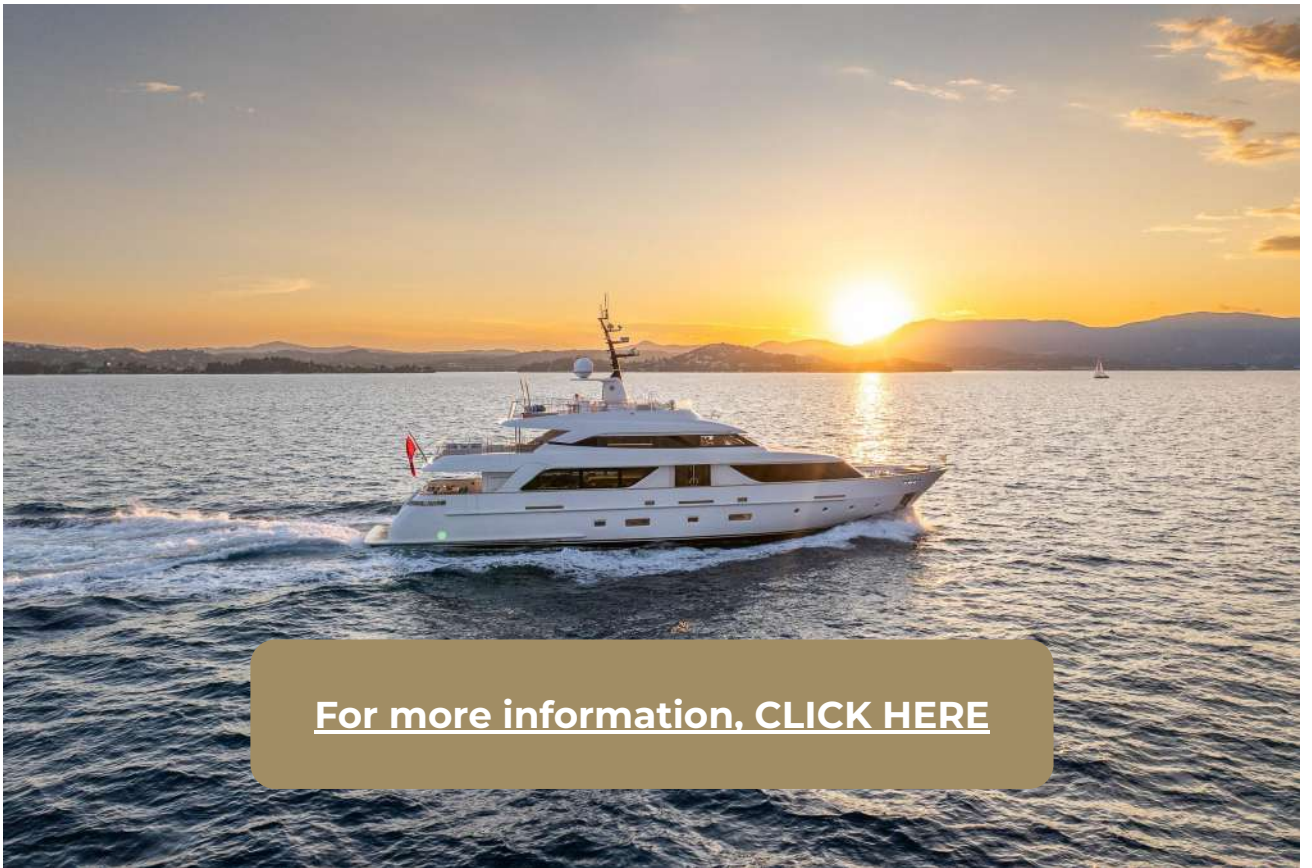
TANKAGE & WATER SYSTEM

- Fuel capacity – Day tanks – 1300lt, main tank 16,100lt and forward tank 12,660lt
- Fresh water capacity – 4,200lt
- Two 200lt stainless steel hot water tanks
- Grey / Black water tank capacity – 2,100lt
- Hamman sewage treatment system (with additional sludge tank)
- Idromar 230lt/hr watermaker
- UV filter for freshwater system
- Idrofast 9100 water softener
- PuRo Grande I fresh water reverse osmosis purifier – max production 540L/hr
- 3 stage water pre-filter from dock inlet
- AXI fuel polisher
- Tender diesel filling system in garage
- Deckwash outlets to cockpit, sundeck, flybridge and bow



LAYOUTS






[For more information, CLICK HERE](#)





CORNELIUS KISTLER

Founder & CEO

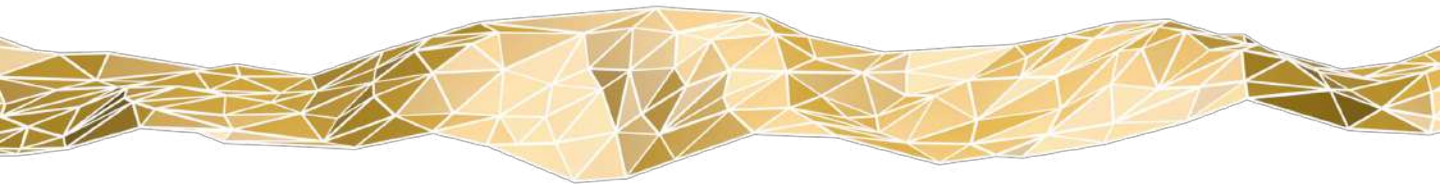
 WHATSAPP ME

m. +41 79 702 7000

ck@breezeyachting.swiss

breezeYachting.swiss

WE SPEAK YACHTING. LET'S TALK.



Switzerland ● Malta ● Spain ● Monaco ● France

www.breezeyachting.swiss

DISCLAIMER

The company offers the details of this vessel in good faith but cannot guarantee or warrant the accuracy of this information nor warrant the condition of the vessel. A buyer should instruct his agents, or his surveyors, to investigate such details as the buyer desires validated.

This vessel is offered subject to prior sale, price change or withdrawal without notice.