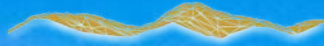


breezeYachting swiss



Sanlorenzo SL102A

'LE GYPSY'

EUR 6'950'000 VAT not paid | 31.08m | 2018

KEY POINTS

- Low engine hours, below 500h
- 5 years RINA pleasure certification works done spring 2025
- Advanced Raymarine DIAMOND navigation package
- Side balcony main deck salon
- Extended engine warranty until End of January 2028



SPECIFICATIONS

Builder:	Sanlorenzo
Model:	SL102A
Model Year:	2018
Flag:	Australia
Hull/Superstructure:	GRP
Class:	RINA Pleasure Yacht
Length overall:	31.10 m
Registered Length:	31.10 m
Beam:	7.10 m
Draft:	1.92 m
Displacement:	120 T
Guests:	10
Cabins:	5
Configuration:	1 x Master cabin, 3 x VIP cabins, 1 x Twin Cabin
Crew:	5
Crew Cabins:	3
Crew Cabins Layout:	1 x Captain's Cabin, 2 x Crew Cabins with Bunk Beds
Engines:	2 x MTU 16V2000 M96
Engine Power:	2 x 2434 HP
Engine Hours:	port: 467 h, stbd: 467 h (17.09.2025)
Fuel Type:	Diesel
Fuel Consumption:	700 L/h @20 knots / 2080 RPM
Maximum Speed:	27 kn
Cruising Speed:	20 kn
Economy Speed:	12 kn
Generators:	2 x Kohler 45 Kw
Generator hours:	port : 470 h, stbd: 530 h (17.09.2025)
Stabilizers:	CMC Electric stabiliser fins with zero speed
Fuel Tank:	12100 l
Water Tank:	1900 l
Black Water:	900 l
Gray Water:	850 l
Tender:	Tender Williams 445 Diesel Jet



Experience the innovative design of LE GYPSY, a 2018 Sanlorenzo SL102A, currently located in Antibes, France. This striking yacht, hull #700, boasts an asymmetrical layout, a pioneering concept from Sanlorenzo that redefines onboard living by maximizing interior volume and offering unparalleled views.

M/Y Le Gypsy offers refined comfort for up to 10 guests across five beautifully appointed cabins. The full-beam master suite is conveniently located on the main deck, providing panoramic views and direct access to the main areas of the yacht. Four additional guest cabins are situated on the lower deck, each designed with elegance and privacy in mind, ensuring a luxurious stay for family and friends.

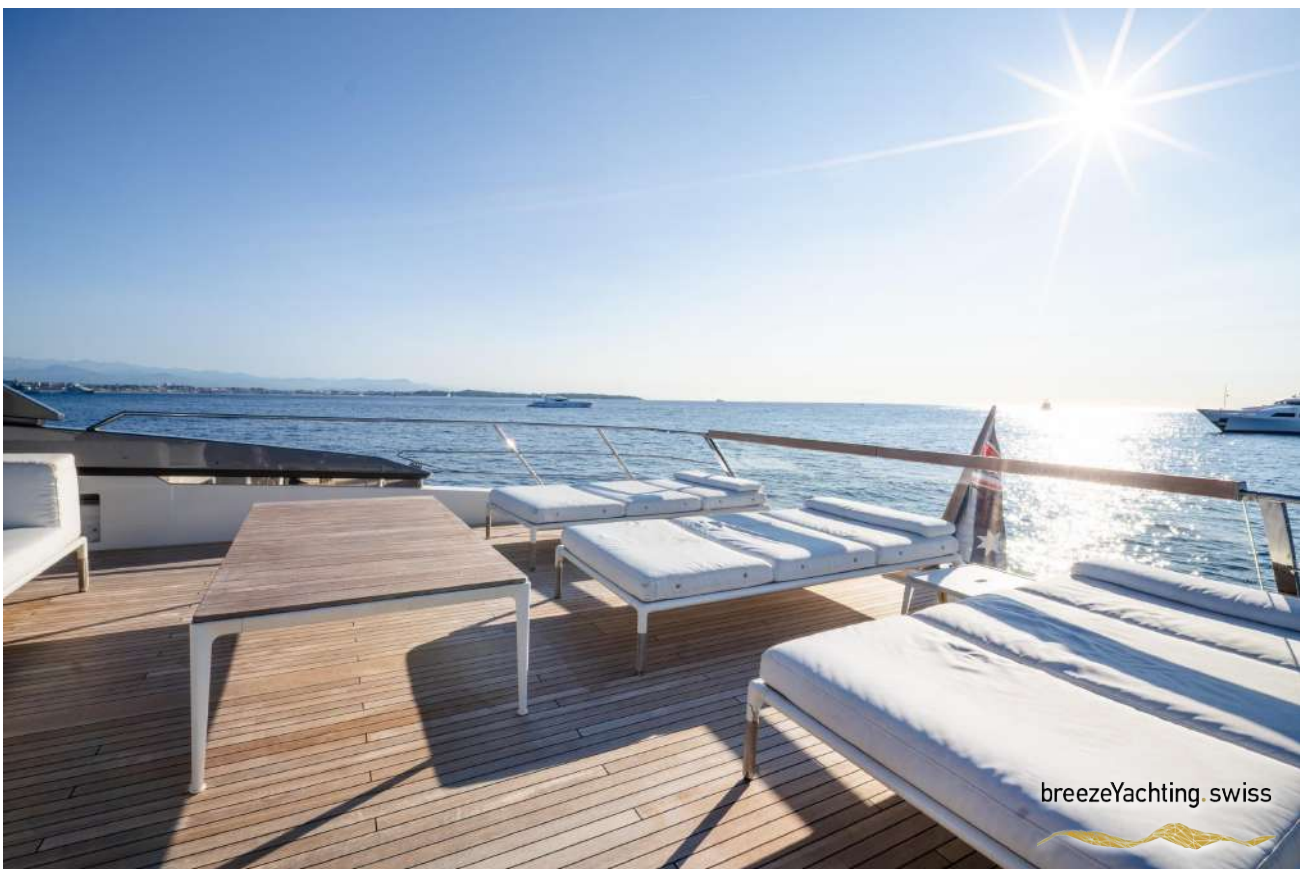
The yacht also accommodates a dedicated crew of five, who are comfortably housed in three well-designed crew cabins. The crew quarters, galley, and pilot house are thoughtfully separated from the guest living spaces, creating a discreet division between service and leisure areas. This smart layout guarantees guests enjoy uninterrupted privacy while benefiting from attentive, seamless service at all times.

LE GYPSY comes exceptionally well-equipped with a hard top featuring electric blades and a watertight opening roof, six underwater lights, and a disappearing stern shower. Her navigation suite includes a Raymarine DIAMOND package, a significant upgrade, and an additional portable MTU control station.

For comfort and entertainment, she features a watermaker, a Platinum Audio/Video Package, and a robust Internet Wi-Fi system with 4G and Harbour Hot Spot Antenna.





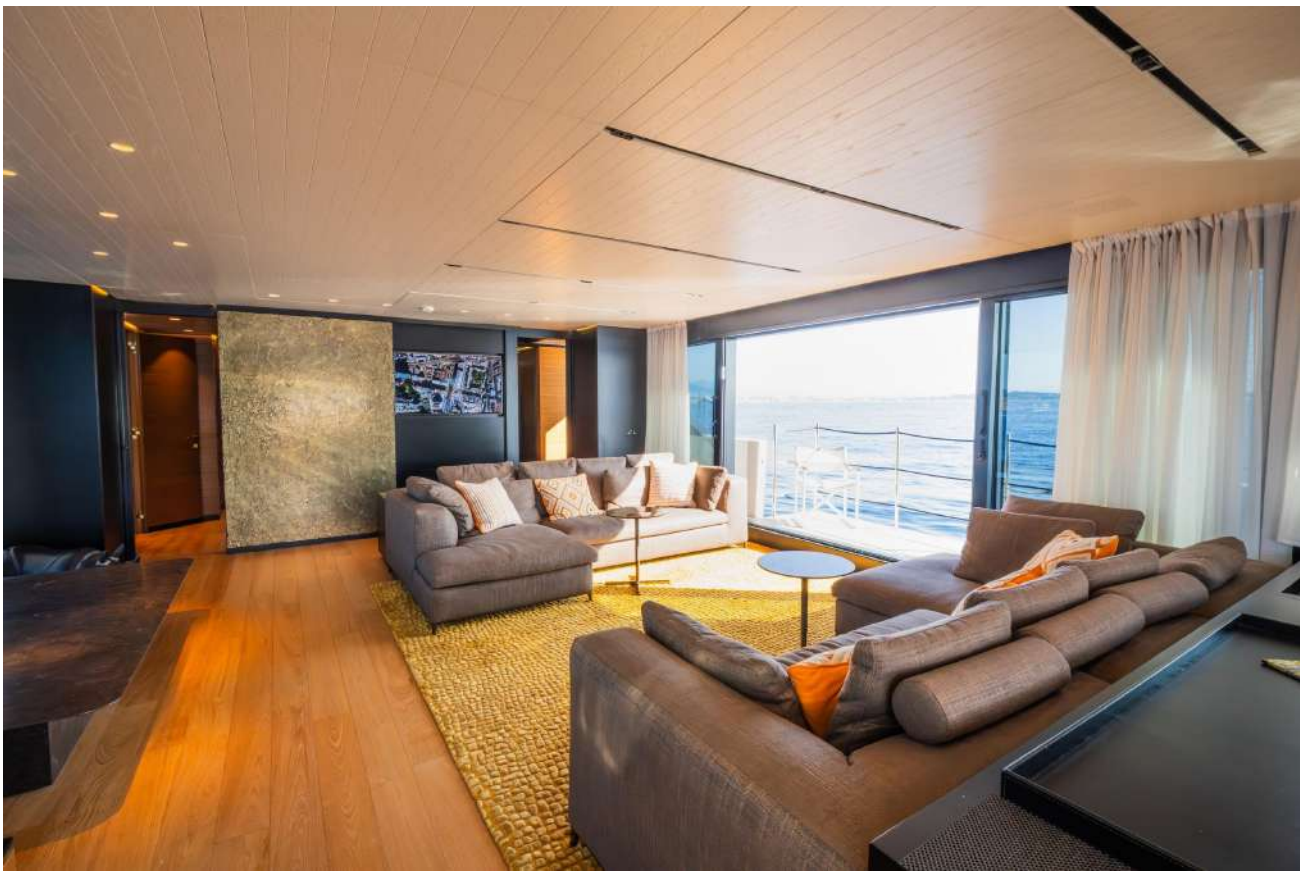


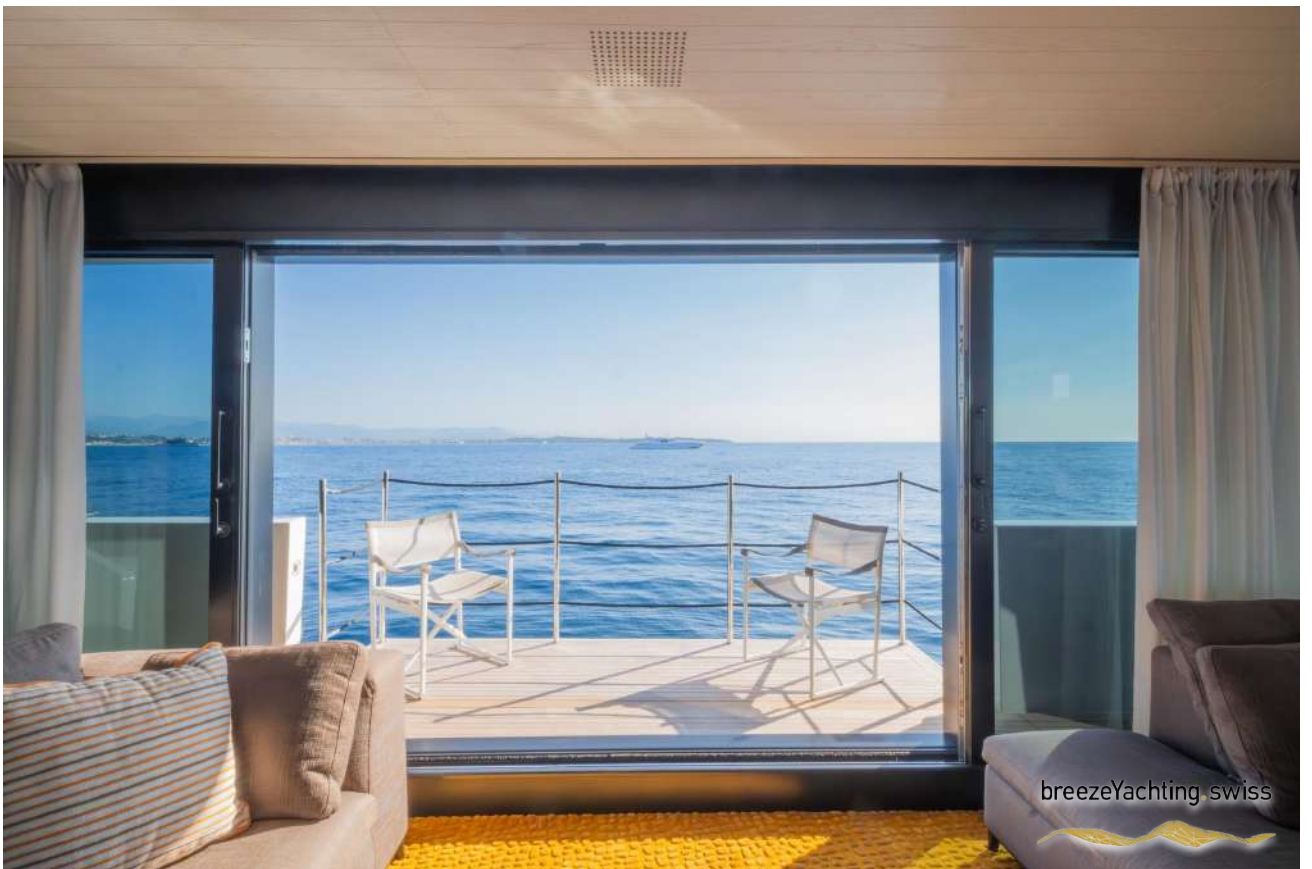


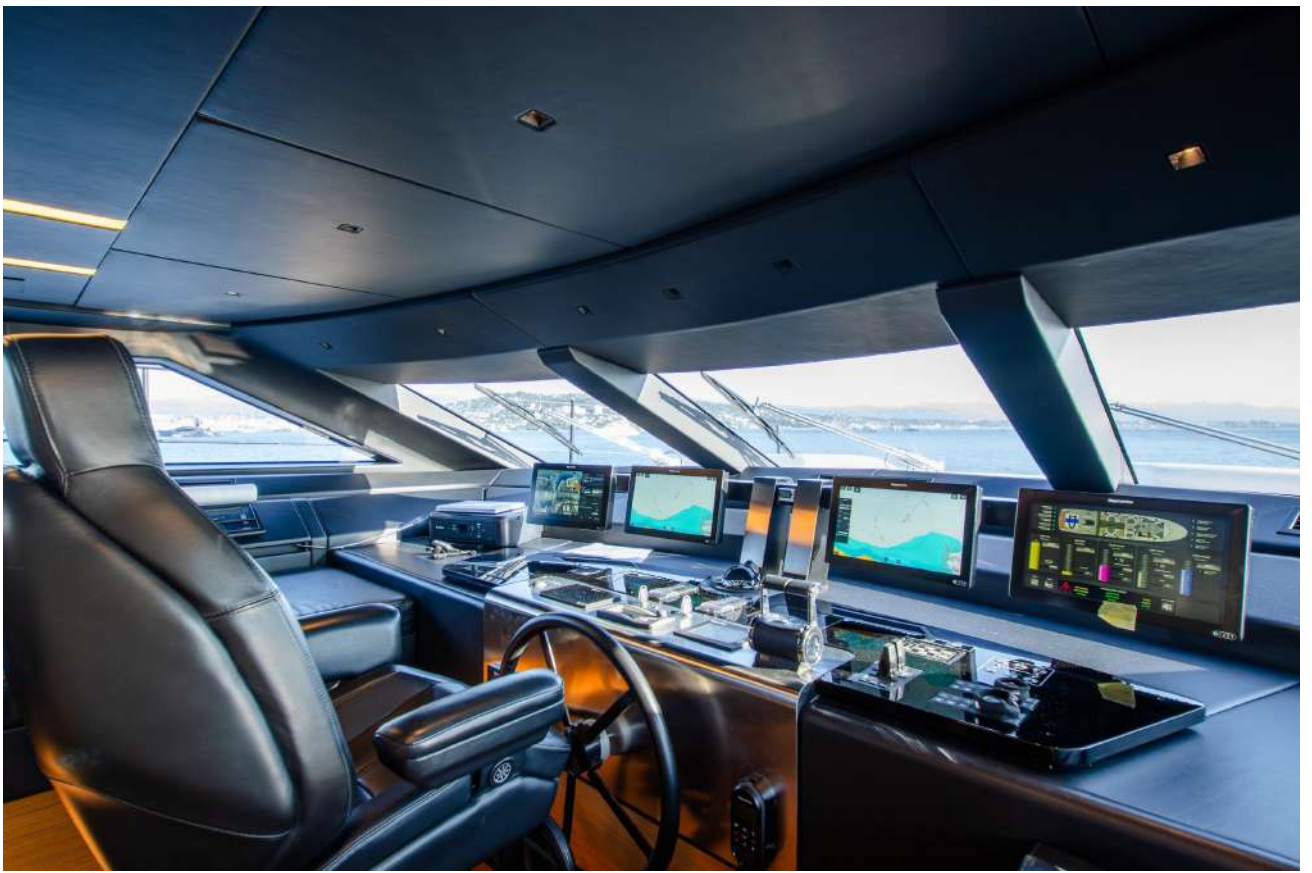
breezeYachting swiss

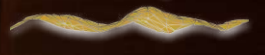


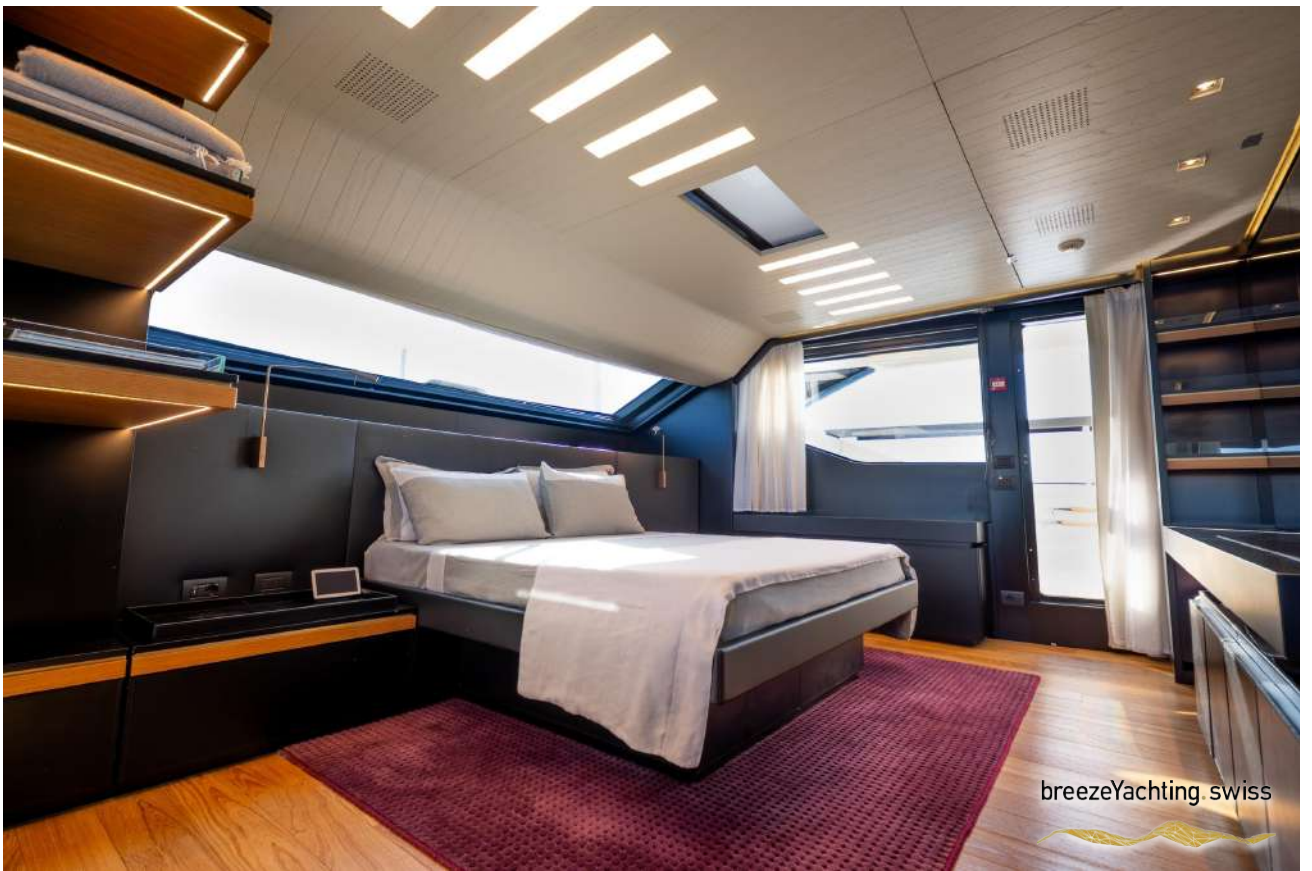




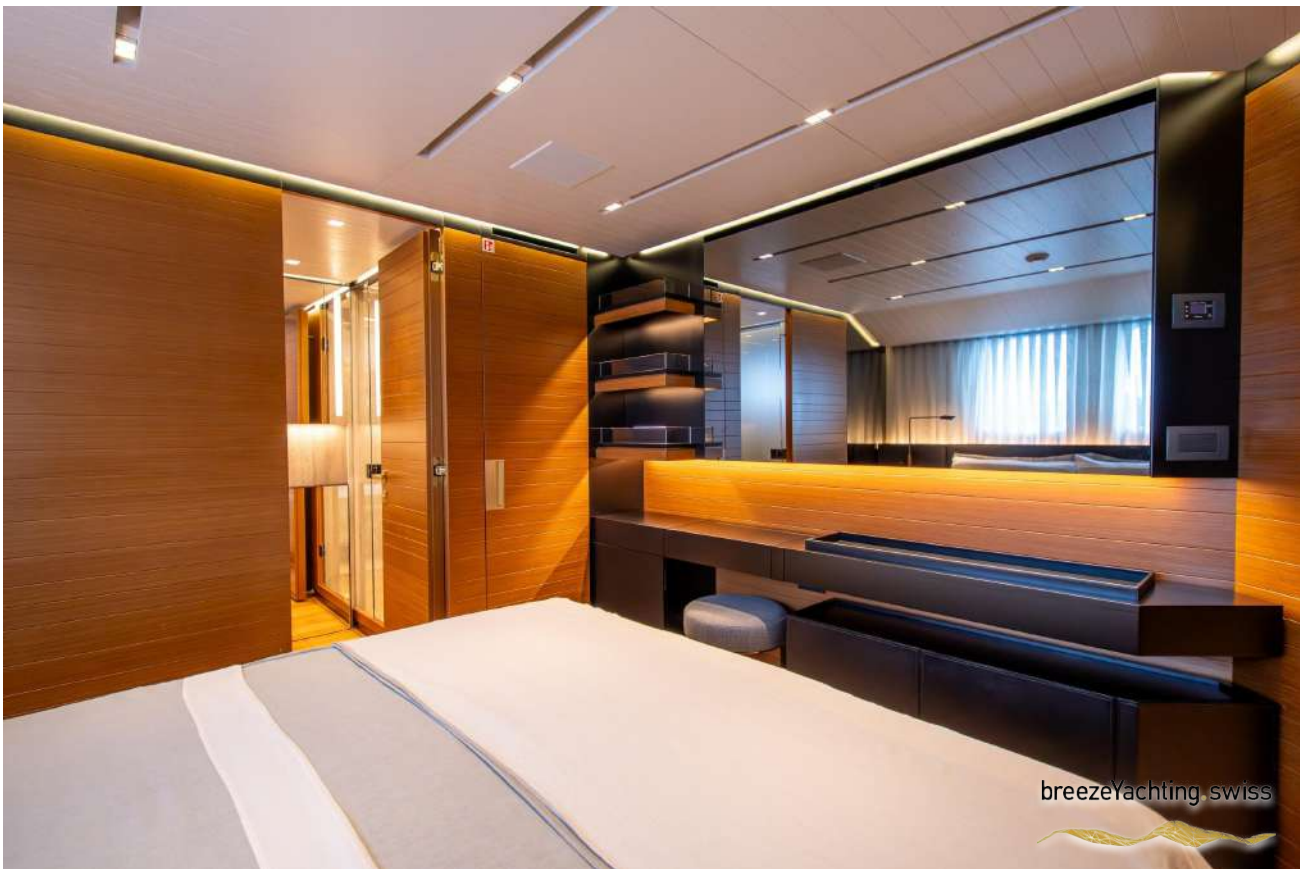


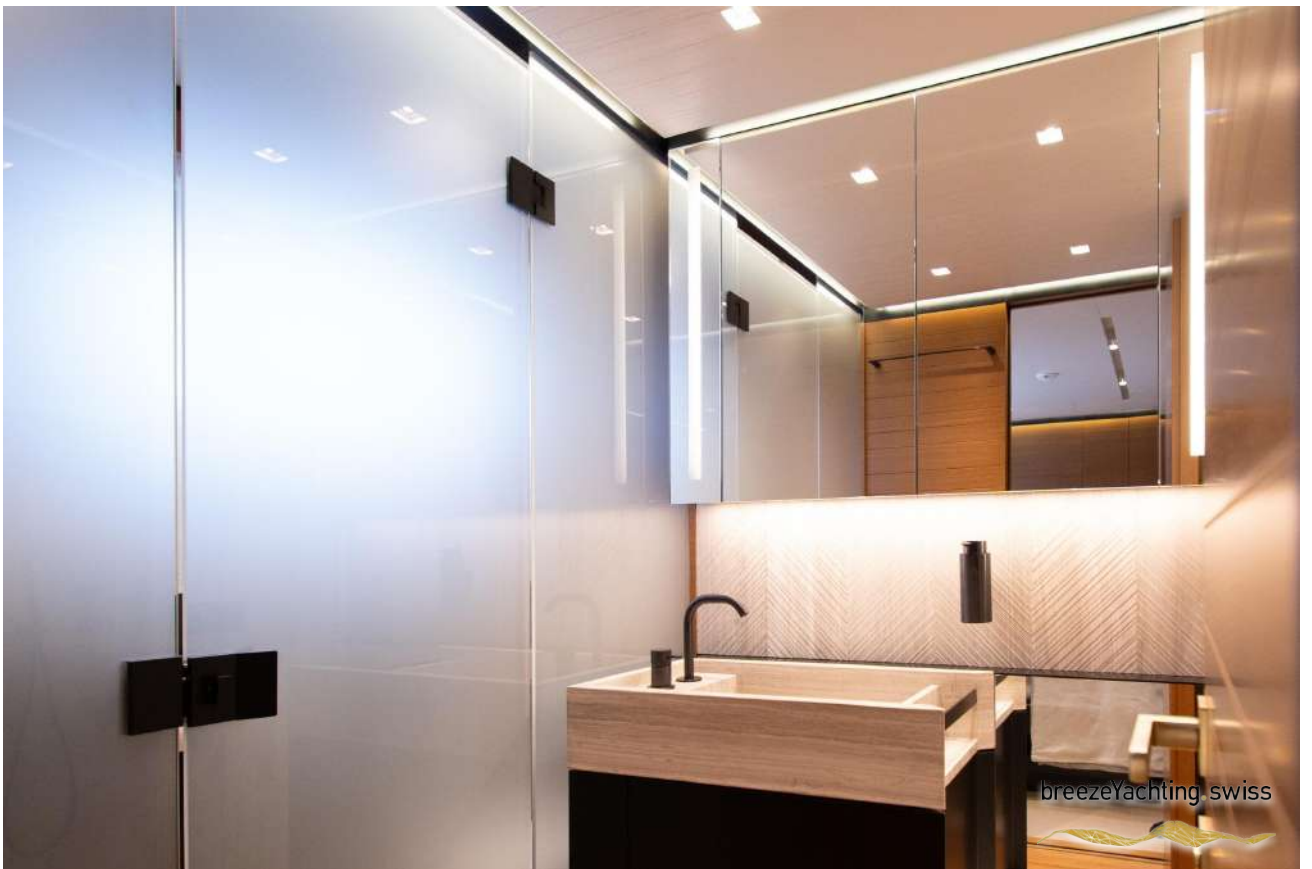
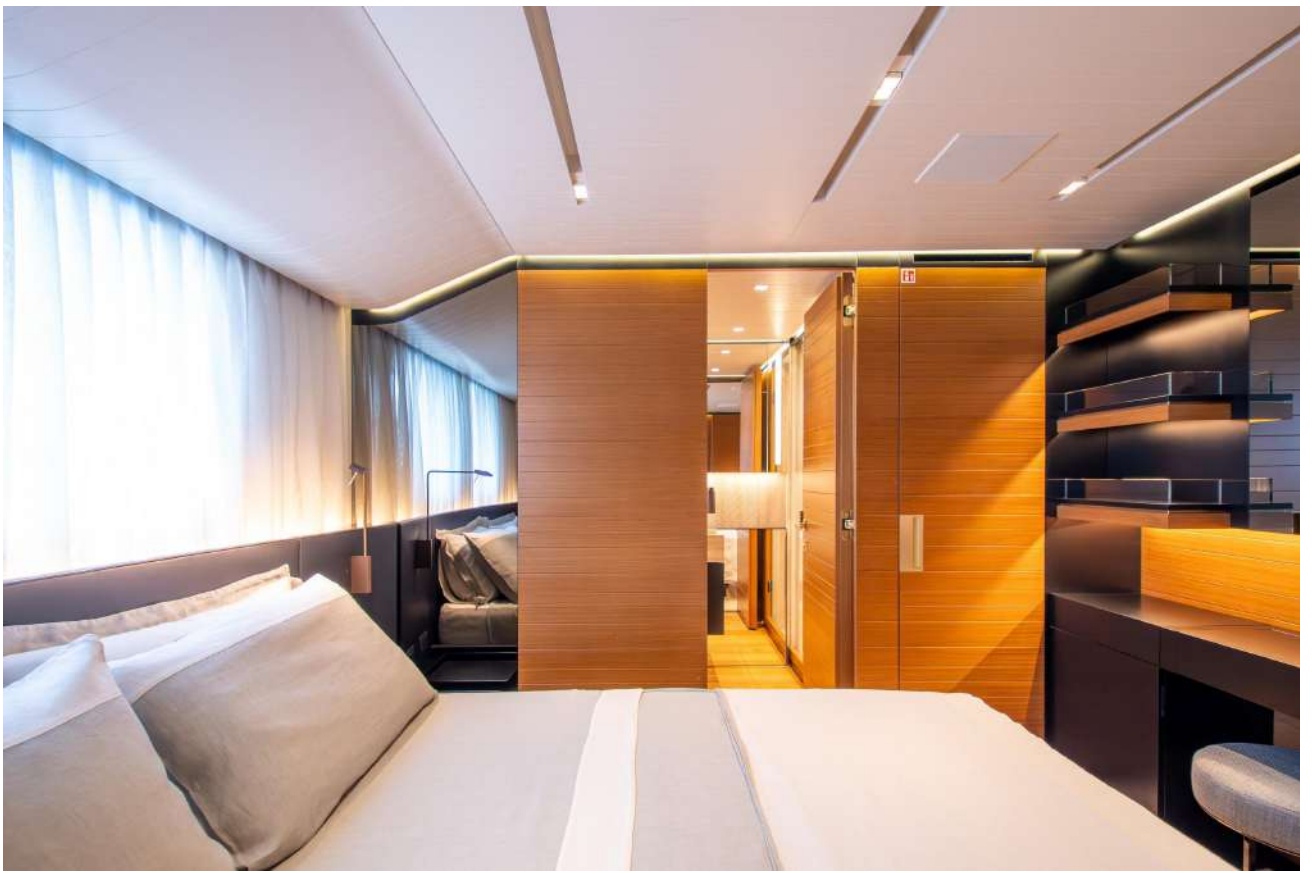


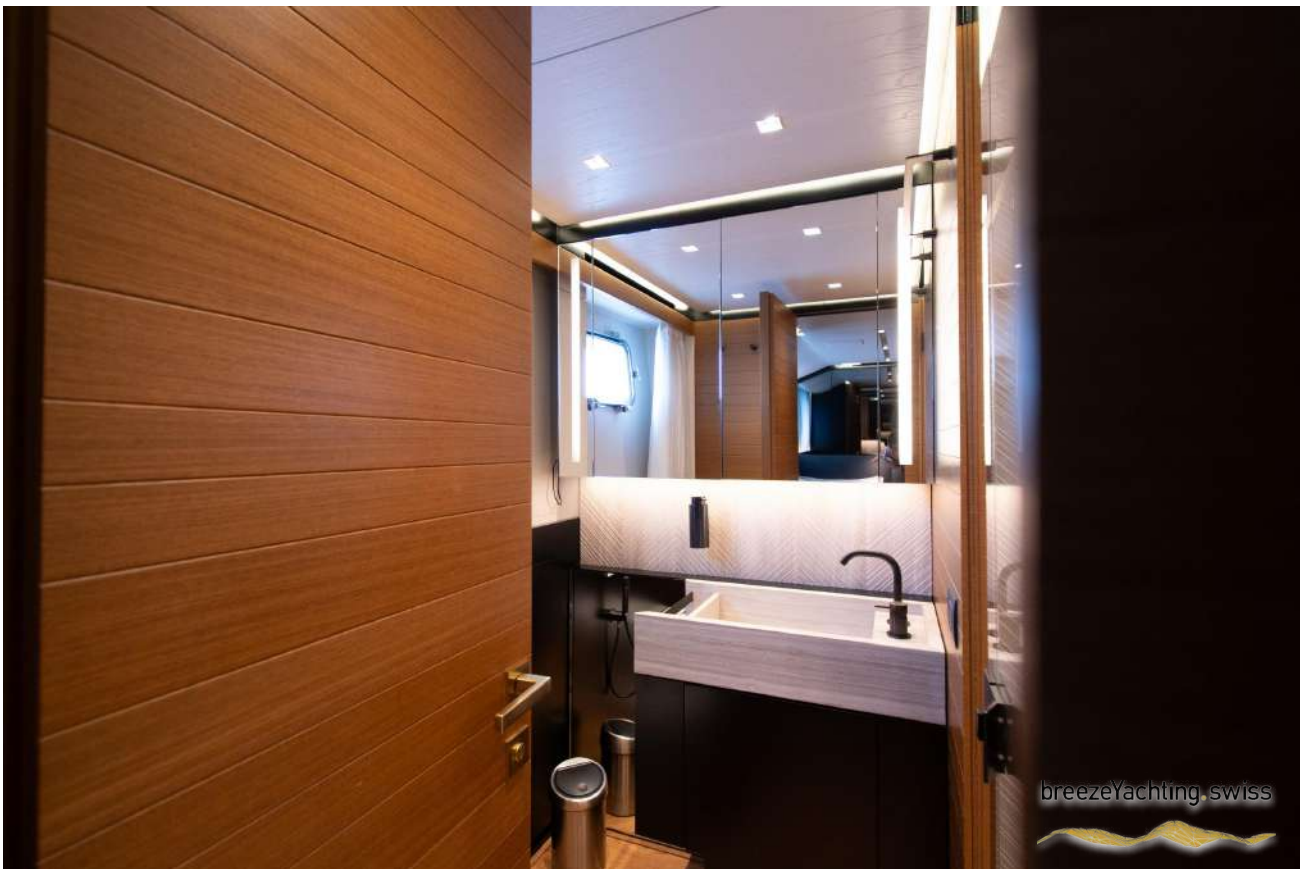
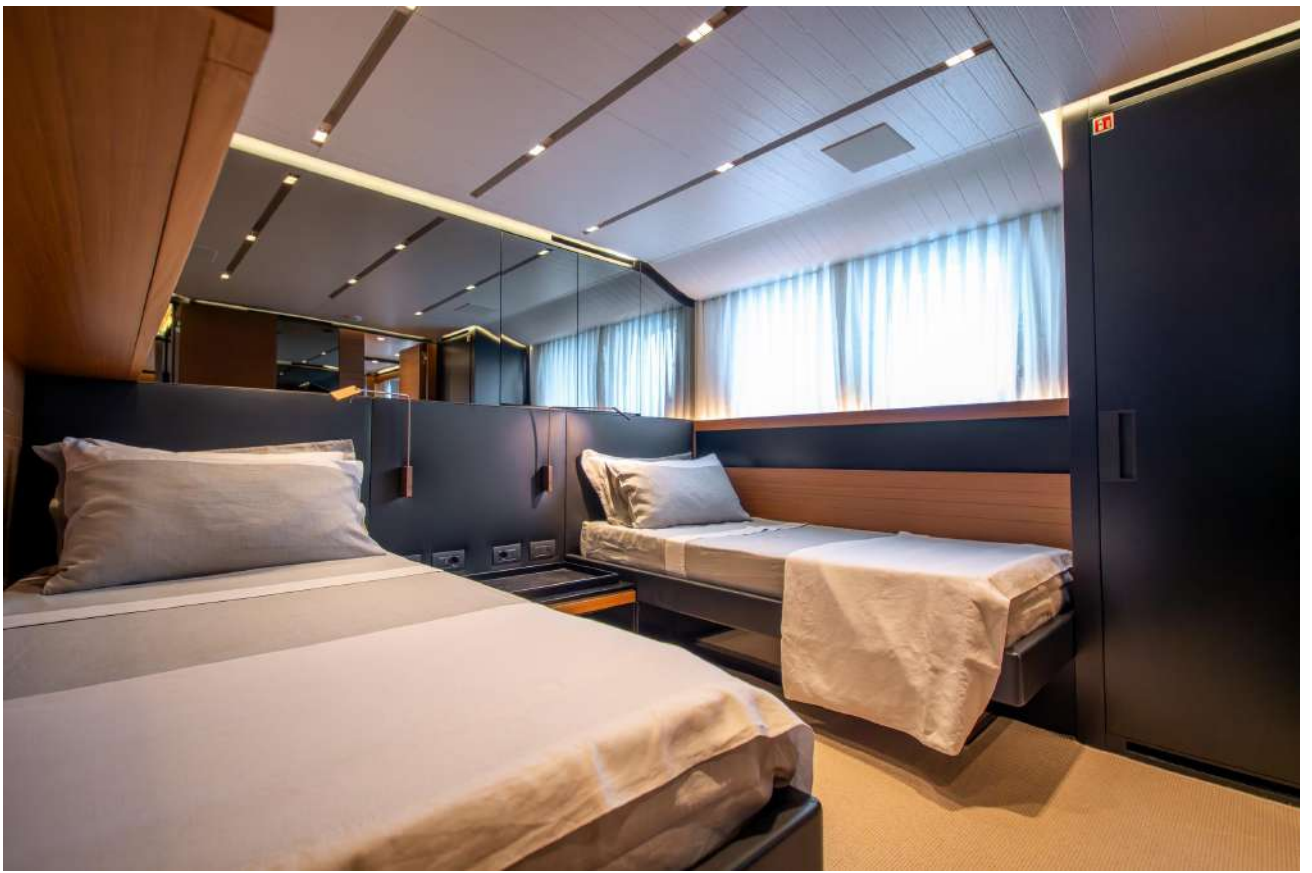












EQUIPMENT

EXTRA EQUIPMENT

- Hard top with electric blades watertight opening roof
- Underwater light, no. 6
- Disappearing stern shower
- Watermaker
- Raymarine DIAMOND package (diff from SILVER std configuration)
- Additional portable control station MTU (cable 1 point of contact)

ELECTRICAL SYSTEM

- Battery charger 12V 25A for generator batteries
- Inverter Mastervolt 24V 5000W – for sockets 220V Cablemaster Glendinning CM8 for shore sockets 100/125A

ALARMS AND SECURITY

- Two (2) fixed cameras in cockpit, and three (2) fixed cameras & (1) pan/tilt camera in engine room, 1 monitor
- Additional full function touch screen systems monitor in crew mess
- Additional color monitor 17" for TVCC

CERTIFICATION AND SAFETY

- International Tonnage Certification
- Carving & Marking Note Certificate
- Rina Class Certificate for Pleasure Yachts

AUDIO VISUAL PACKAGE

- Platinum Audio/Video Package – diff from SILVER standard configuration
- Internet Wi-Fi System 4g with Harbour Hot Spot Antenna

SATELLITE AND COMM SYSTEM

- TV-Sat Antenna SEATEL ST24E
- Empty Radome SEATEL ST24E

COMPLEMENTS FOR INTERIOR

- Difference from standard from interior design, wood, lights and external furniture from Paola Lenti or equivalent
- Main saloon electric curtains
- 4 (four) Electric blackout shades in LD cabin
- Electric skylight with electric curtain (900*550 mm)
- Side balcony with lateral door in main deck salon (STED side only)
- Lateral openable window in full beam area part side
- Parquet in the main deck salon (diff. with STD carpet)

ENGINE ROOM EQUIPMENT

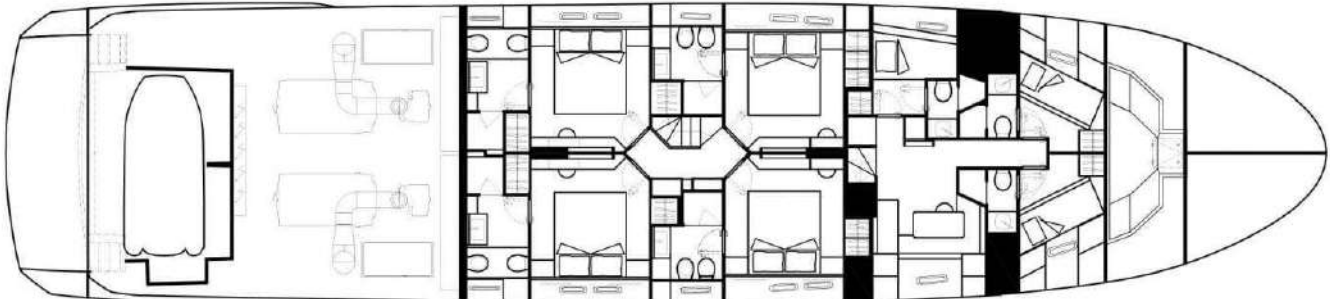
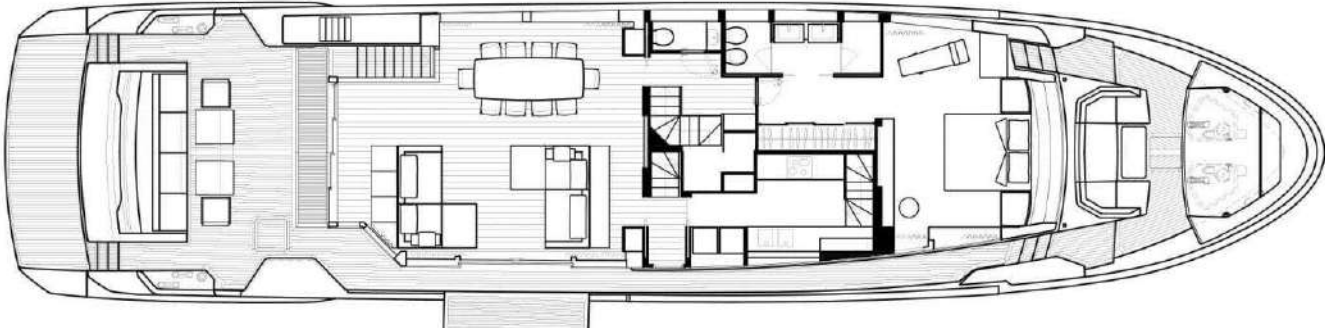
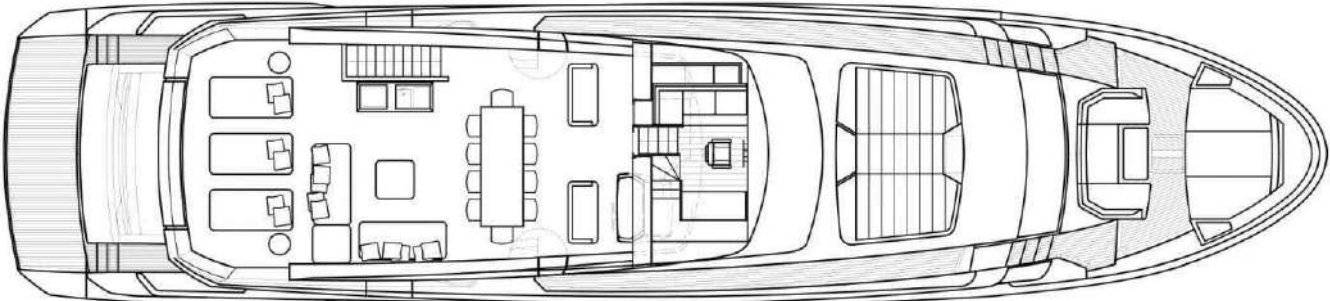
- Sewage Treatment System TECNICOMAR mod. ECOMAR
- Purification filter active carbons
- Hydraulic stern thruster

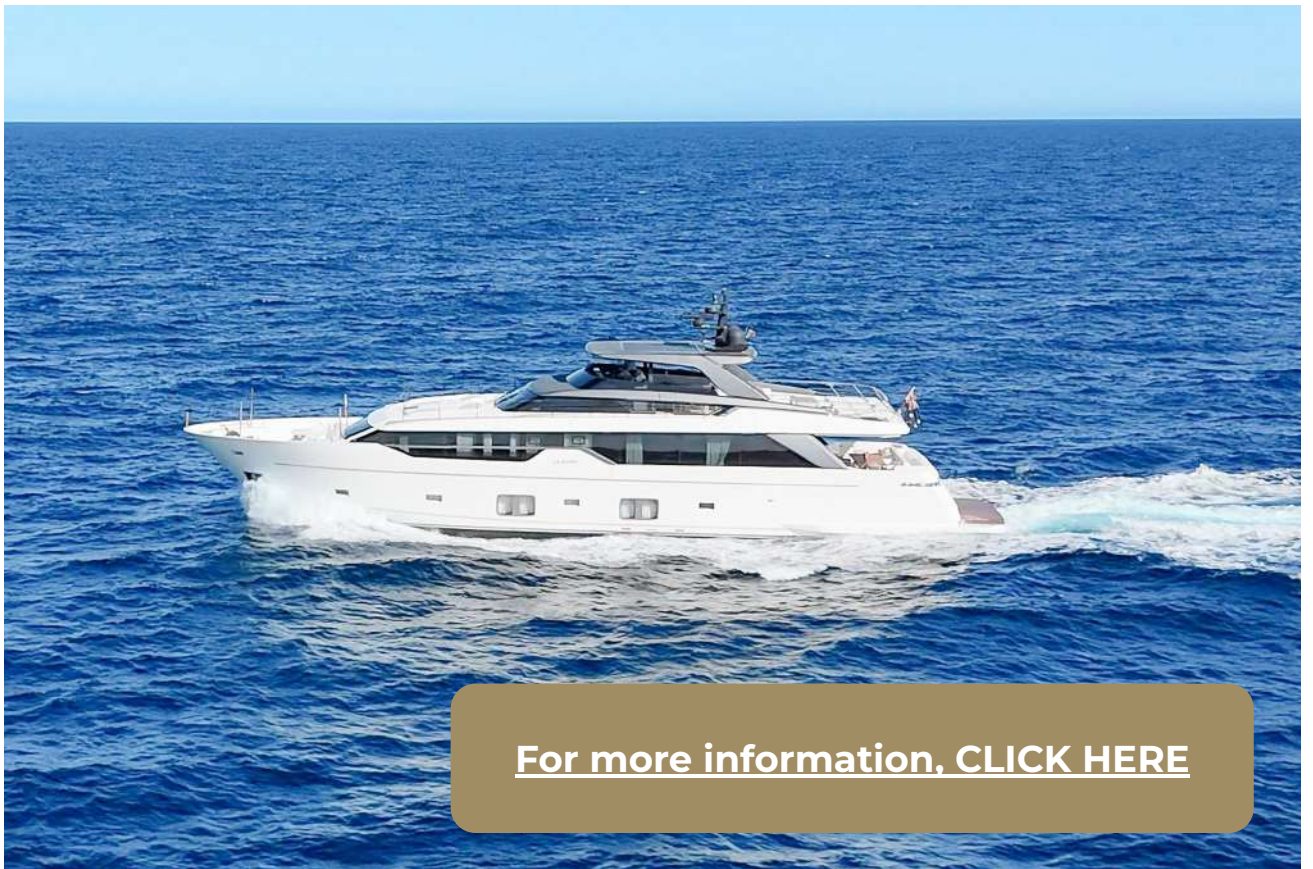
GALLEY

- Ice Maker
- Wine cooler 34 bottles
- Teppan Yaki

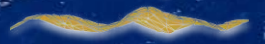


LAYOUTS





[For more information, CLICK HERE](#)





CORNELIUS KISTLER

Founder & CEO

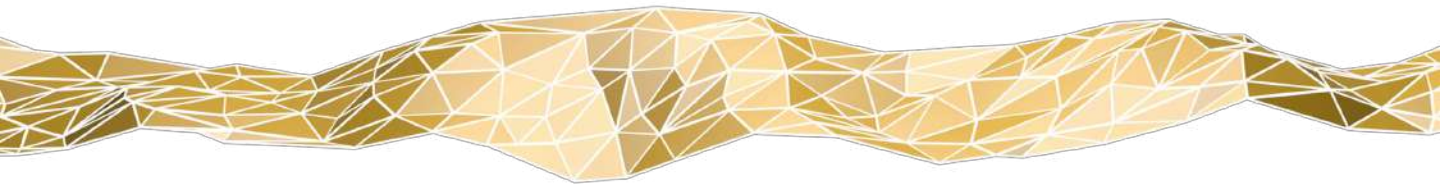
 WHATSAPP ME

m. +41 79 702 7000

ck@breezeyachting.swiss

breezeYachting.swiss

WE SPEAK YACHTING. LET'S TALK.



Switzerland ● Malta ● Spain ● Monaco ● France

www.breezeyachting.swiss

DISCLAIMER

The company offers the details of this vessel in good faith but cannot guarantee or warrant the accuracy of this information nor warrant the condition of the vessel. A buyer should instruct his agents, or his surveyors, to investigate such details as the buyer desires validated.

This vessel is offered subject to prior sale, price change or withdrawal without notice.