

breezeYachting swiss



Spirit Yachts 60DH
'SPIRIT OF RANI'

€1'485'000 incl. VAT | 18.3m | 2012

KEY POINTS

- Over €200,000 invested for near-concourse condition, including new sails, new rigging, and fresh Awlgrip paint
- Bespoke deckhouse: 11 safety-glass windows and ergonomic helm-centric sail controls
- Solid timber craftsmanship: Douglas Fir, Khaya, and Mahogany construction throughout
- Short-handed optimization: carbon rig, electric reefing, and Navtec hydraulic systems
- Luxury interior for 5: mahogany staterooms, guest cabins, and full-service galley
- Self-sufficient cruiser: 50L/hr watermaker, AC, generator, and 660nm range



SPECIFICATIONS

Builder:	Spirit Yachts
Model:	Spirit 60DH
Year:	2012
Refit Year:	2024 / 2025
Hull/Superstructure:	Wood
Deck material:	Teak
Flag:	German
Location:	Valletta, Malta
Length overall:	18..3 m
Beam:	4.3 m
Draft:	2.8 m
Displacement:	14.7 T
Gross Tonnage:	26.44 GT
Guests:	5
Staterooms:	3
Cabins Configuration:	Owner's stateroom; double guest cabin; small berth
Crew:	1
Crew Cabins:	1 (convertible berth in pilothouse)
Engine:	1 x Steyr MO144M38
Engine type:	Turbo Diesel, Indirect cooled
Drive Type:	Stainless steel shaft, bronze P bracket, 3-bladed props
Total Power:	100 HP
Generator:	Mastervolt Whisper 8 kVA; electric start; 35A 12v alternator
Cruising Speed:	9.8 knots
Range:	660 nm
Fuel Consumption:	330 l/h
Fuel Tank:	500 l
Fresh water:	680 l
Black Water:	70 l
Gray Water:	80 l











breezeYachting swiss







breezeYachting swiss





















breezeYachting.swiss





EQUIPMENT

EXTRA EQUIPMENT

- Rig (serviced and partly new 2024): Fractional carbon sloop, keel-stepped, manufactured by Southern Spars. It features a three-spreader rig, carbon/rod standing rigging (rod rigging new 2024), Bartels electric headsail roller reefing, and hydraulic backstay, outhaul, vang, and halyard tension controls (Navtec/B&G).
 - Sails (new 2024):
 - Mainsail: Fully battened deep-roach, 2 slab reefs, Quantum Fusion sailcloth, 7 carbon battens, and Harken batten car/switchcar.
 - Jib: 110% Quantum Fusion sailcloth, with a furling drum below the foredeck.
 - Free-flying reacher on a furling system.
 - Winches: All self-tailing chrome bronze Harken. All blocks and deck gear are Schaeffer mirror-polished stainless steel.
-

NAVIGATION AND COMMUNICATION

- VHF: Simrad VHF, DSC-enabled (GMDSS), and an Icom waterproof handheld VHF.
- AIS, Depth Sounder, Searchlight, and EPIRB are all installed.
- DSC Controller: Simrad VHF is DSC enabled.
- Autopilot: B&G T2 autopilot with a hydraulic linear drive ram, B&G Hydra G3000 CPU, and B&G Halcyon 2000 compass sensor.
- GPS/Chartplotter: Simrad GPS chartplotter at the chart table with a repeater at the helm. There is also a B&G GFD multi-function display at the chart table and a further monitor in the owner's cabin.
- Magnetic Compass: A 5-inch Danforth/Rigel compass with light and dimmer.
- Wind Instruments: B&G wind instruments sender at the masthead and B&G 20/20HV multi-function displays (two port and two starboard deckhouse aft).
- Radar: The radar has been removed, but all cables are in place.



EQUIPMENT

DECK EQUIPMENT

- Anchor Windlass: Lewmar electric windlass with warping/chain gypsy, brake and chain counter, and a wandering handheld control.
 - Anchors: Main: 25 kg Delta type; Kedge: 18 kg Fortress type.
 - Anchor Chains: Main: 70m x 10mm calibrated chain; Kedge: 10m x 10mm chain + 100m x 20mm multiplait warp.
 - Boat Crane & Davits: Yes, they are removable and stored in a locker.
 - Passerelle: 1.5m with two pin deck mounts.
-

MECHANICAL EQUIPMENT

- Gear Box: KM35A1 Marine Gearbox, 2.6:1 ratio, 8° down drive angle.
 - Steering: Direct chain and wire drive, featuring a custom laminated mahogany wheel (1.3m, carbon fibre core) with a wheel brake, and 3.0 revolutions lock to lock with 35° quadrant stops.
 - Water Maker: Seafresh H203, fully automatic, 50 litres/hour, 240v AC.
 - Air Conditioning: Webasto reverse cycle chilled/warm water system with 8 outlets, 240v AC 50Hz.
 - Bow Thruster: Sidepower 90 kgf (7 kW) duo-prop with joystick and on/off control at the helm.
-

ELECTRICAL SYSTEMS

- Shore Power: Mastervolt 32A, which includes a 10m shore cable plus a 15m extension, and a 7 kVA galvanic isolator.
- Electricity Output: 230v AC single phase and 24v DC.
- Converter: Mastervolt Sinewave inverter 24/1000W.
- Main Engine Starting Batteries: 1 x Mastervolt AGM 12/90 Ah (90Ah @ 12v starter).
- Service Batteries: 4 x Mastervolt AGM 12/200Ah (400Ah @ 24v, new 2025).



EQUIPMENT

AUDIO VISUAL EQUIPMENT

- Audio Equipment: Bose loudspeaker system throughout all cabins and exterior, and a CD player connected to the Zeuss Navi system.
 - Video Equipment: Television with a mast-mounted antenna.
-

GALLEY & LAUNDRY

- Cooking Equipment: Three-burner hob, grill and oven, gimballed mount.
 - Refrigerator: Front-loading refrigerator approx. 120L; additional wine cooling fridge approx. 46L.
 - Freezer: Polyethylene top-loading freezer approx. 46L.
 - Washing Machine: Connection points installed (foredeck anchor hatch).
-

SAFETY & FIRE PROTECTION

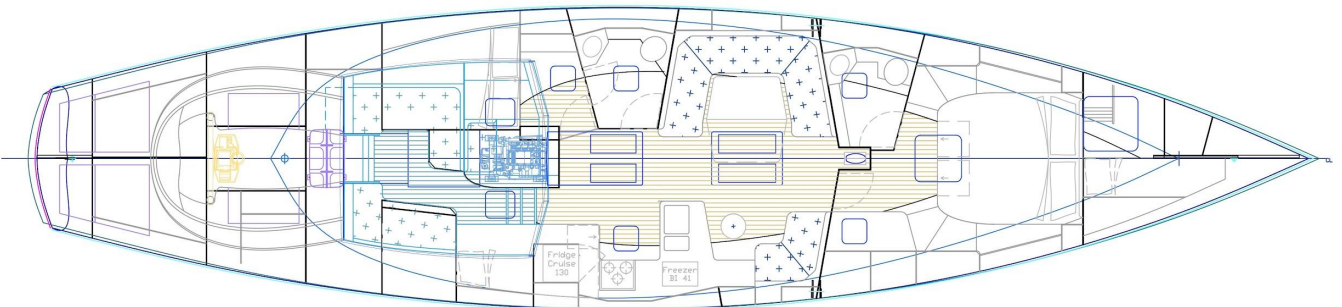
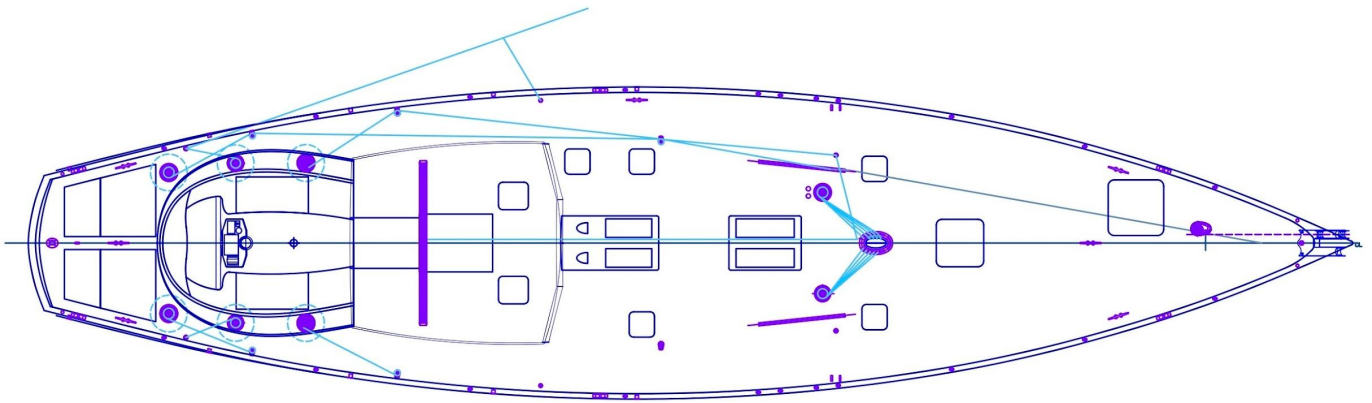
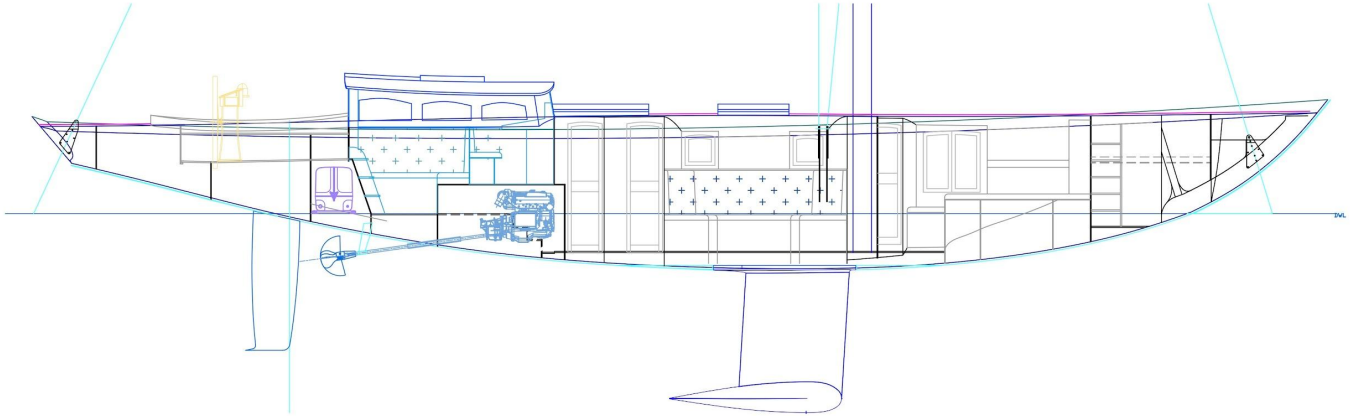
- Life Jackets: 6 x adult lifejackets with harness, light and whistle.
 - Life Rafts: 1 x 8-man SOLAS-approved liferaft with an A survival pack.
 - Flares: 1 x SOLAS offshore flare kit and 1 x SOLAS flare container.
 - Emergency VHF: Icom waterproof handheld VHF.
 - Fire Extinguishers: Multiple portable fire extinguishers as required by IMCI.
-

TENDERS & TOYS

- Zodiac 3.6m tender, powered by an 8 HP Yanmar outboard engine.



LAYOUTS



For more information, [CLICK HERE](#)





CASSIDY WOODS

Yacht Advisor Malta

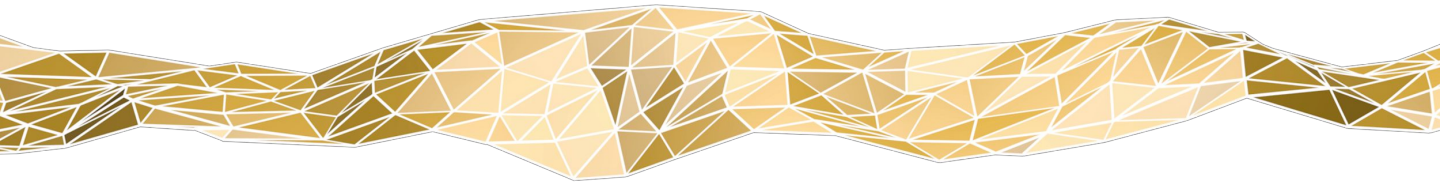
 WHATSAPP ME

m. +35 69 933 8880

cass@breezeyachting.swiss

breezeYachting.swiss

WE SPEAK YACHTING. LET'S TALK.



Switzerland ● Malta ● Spain ● Monaco ● St. Tropez

www.breezeyachting.swiss

DISCLAIMER

The company offers the details of this vessel in good faith but cannot guarantee or warrant the accuracy of this information nor warrant the condition of the vessel. A buyer should instruct his agents, or his surveyors, to investigate such details as the buyer desires validated.

This vessel is offered subject to prior sale, price change or withdrawal without notice.