

breezeYachting swiss



# Sunreef 74 Sailing 'KAILUA'

EUR 2'950'000 VAT not paid | 23.3m | 2018/2025

# KEY POINTS

- 2025 Refit: more than € 500k invested, new engines, and much more!
- 40kw Lithium Battery System: Generator-free, silent power.
- Aft Swim Platform: Easy water access.
- Many redundant systems (2 watermaker, 2 freshwater circulations, built for around the world capability, independence and redundancy.)
- Satellite & Starlink: Reliable global connectivity.



# SPECIFICATIONS

<b>Builder:</b>	Sunreef Yachts
<b>Model:</b>	74C Sailing
<b>Model Year:</b>	2018
<b>Refit Year:</b>	2025
<b>Flag:</b>	Cayman Islands
<b>Hull/Superstructure:</b>	GRP
<b>Class:</b>	Pleasure Yacht
<b>Exterior Design:</b>	Sunreef Yachts
<b>Length overall:</b>	23.30 m
<b>Beam:</b>	10.10 m
<b>Draft:</b>	1.95 m
<b>Guests:</b>	9
<b>Cabins:</b>	4
<b>Cabins Configuration:</b>	1 Master, 2 VIP, 1 kids
<b>Heads:</b>	4
<b>Crew Cabins:</b>	2
<b>Crew:</b>	3
<b>Engines:</b>	2 x John Deere 4045AFM85 225HP
<b>Total power:</b>	450 HP
<b>Engine hours (08/2025):</b>	70 hrs
<b>Fuel Type:</b>	Diesel
<b>Generators:</b>	2 x Cummins Onan Diesel 27 kVA
<b>Generator hours (08/2025):</b>	3270 h
<b>Fuel Tank:</b>	6000 l
<b>Water Tank:</b>	1600 l
<b>Gray Water:</b>	700 l
<b>Black Water:</b>	700 l





















breezeYachting swiss

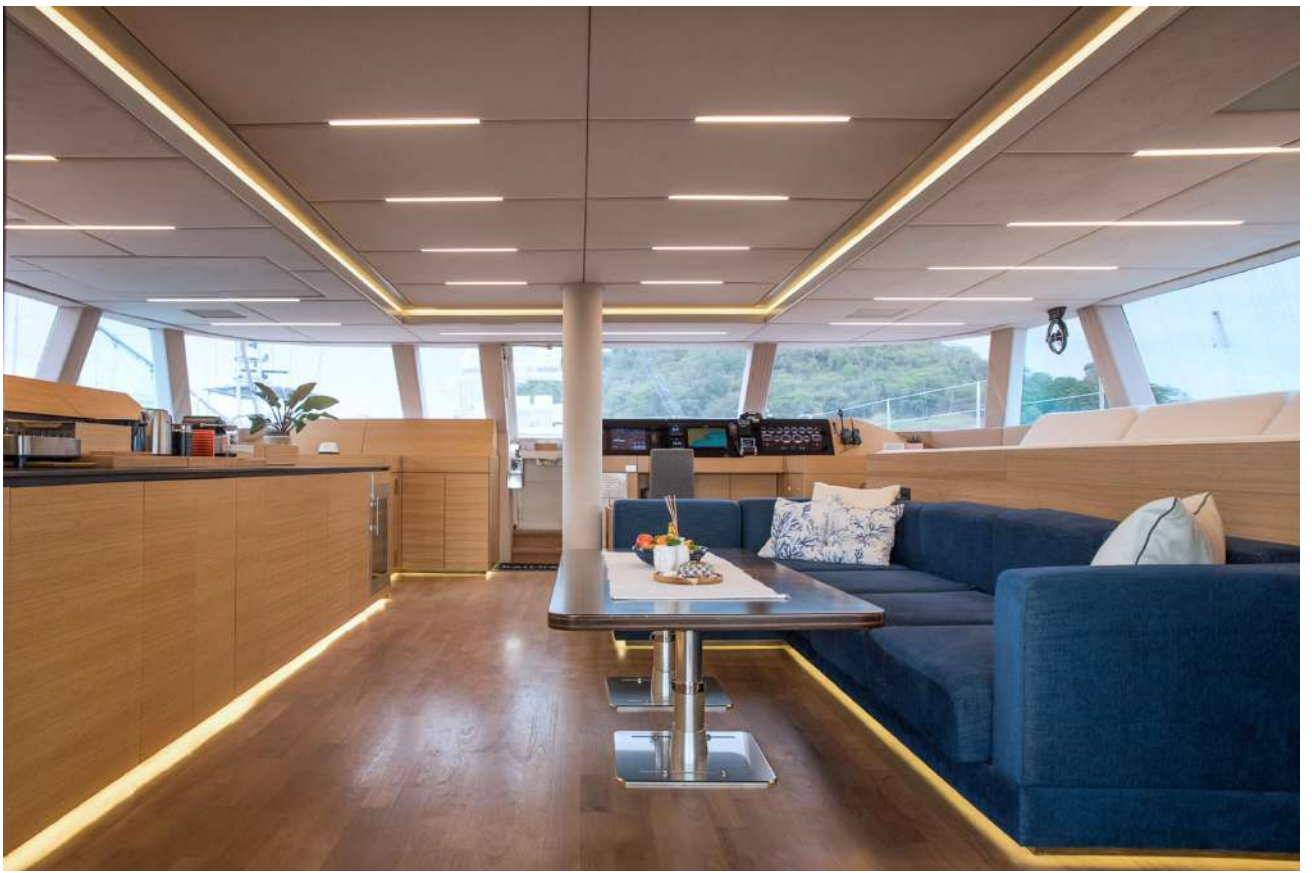






breezeYachting swiss





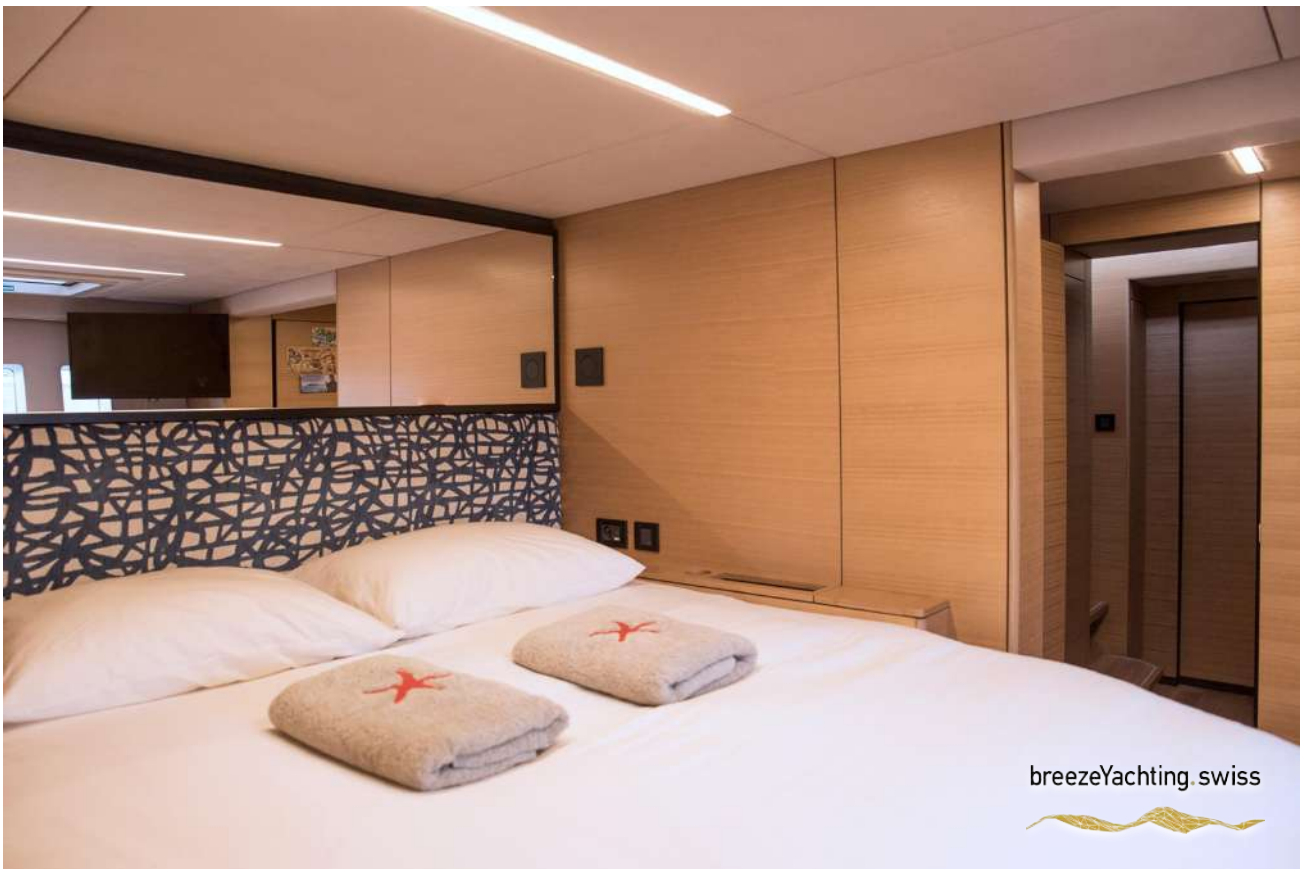


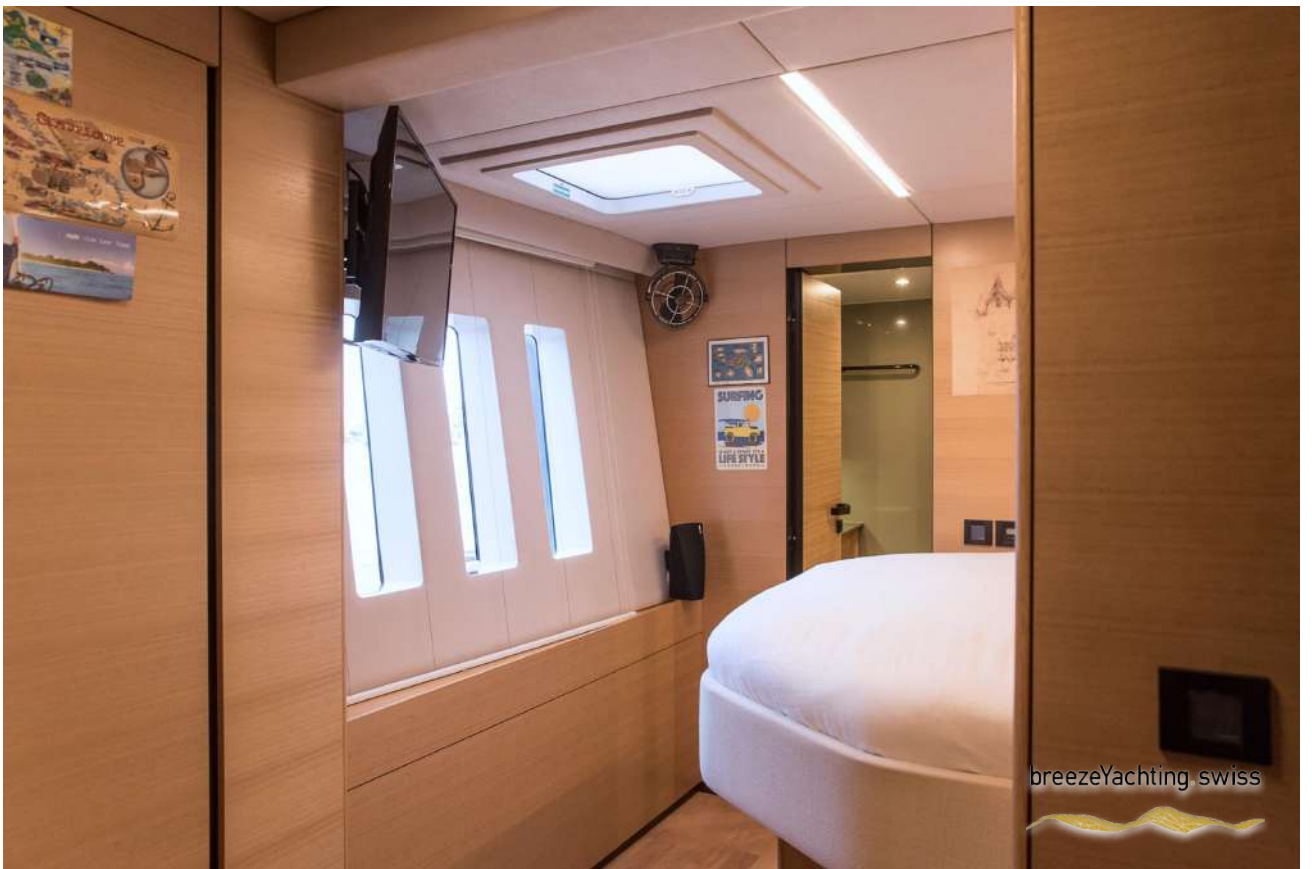


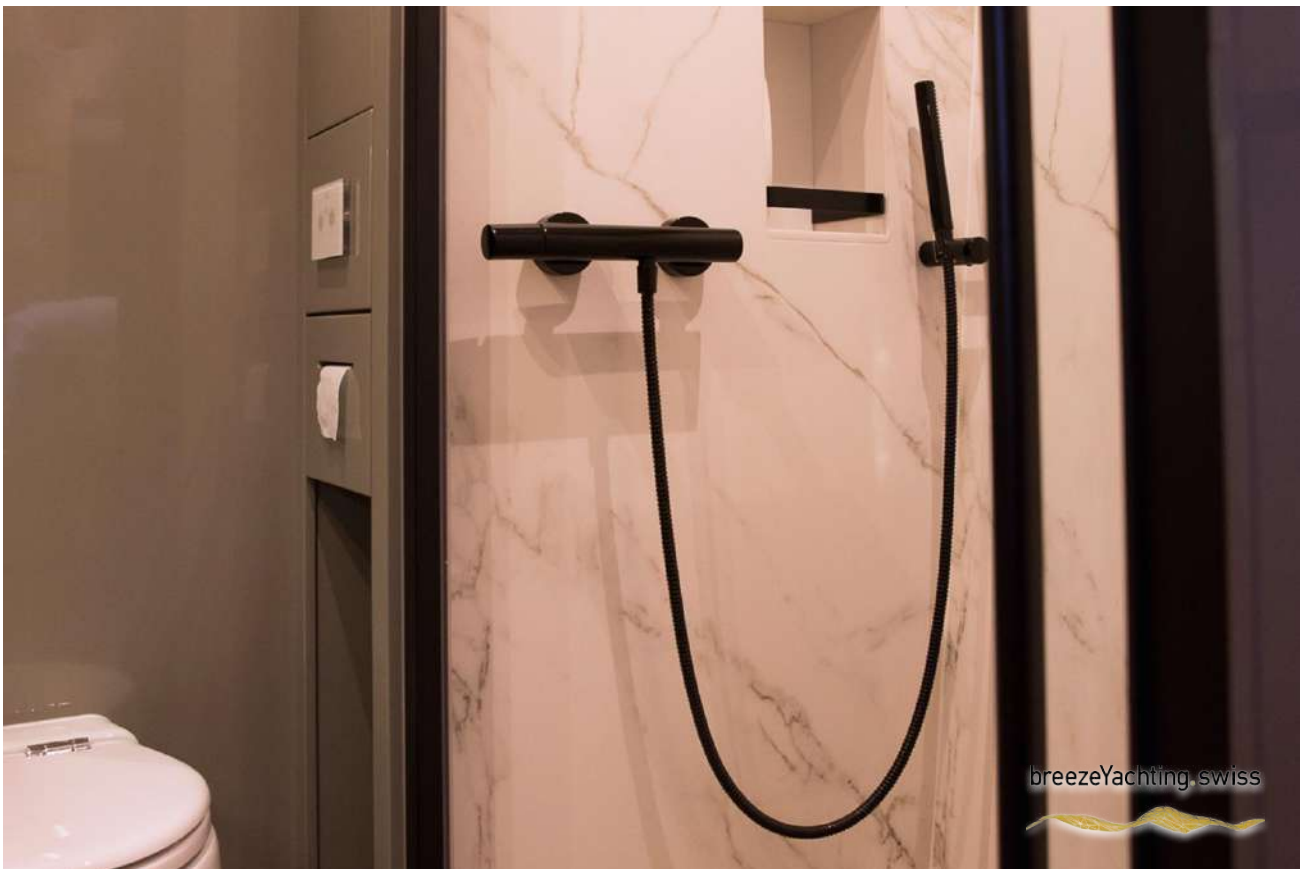






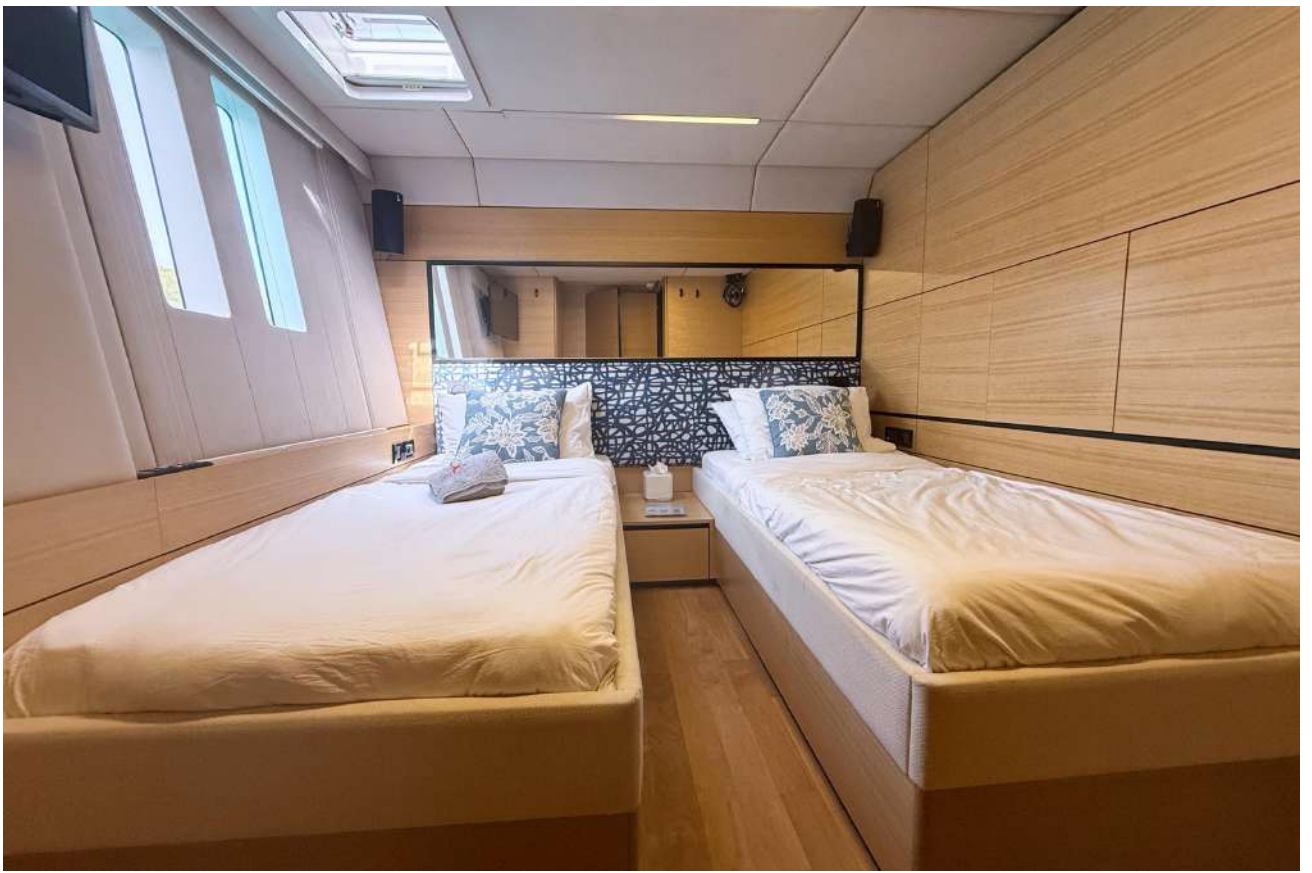






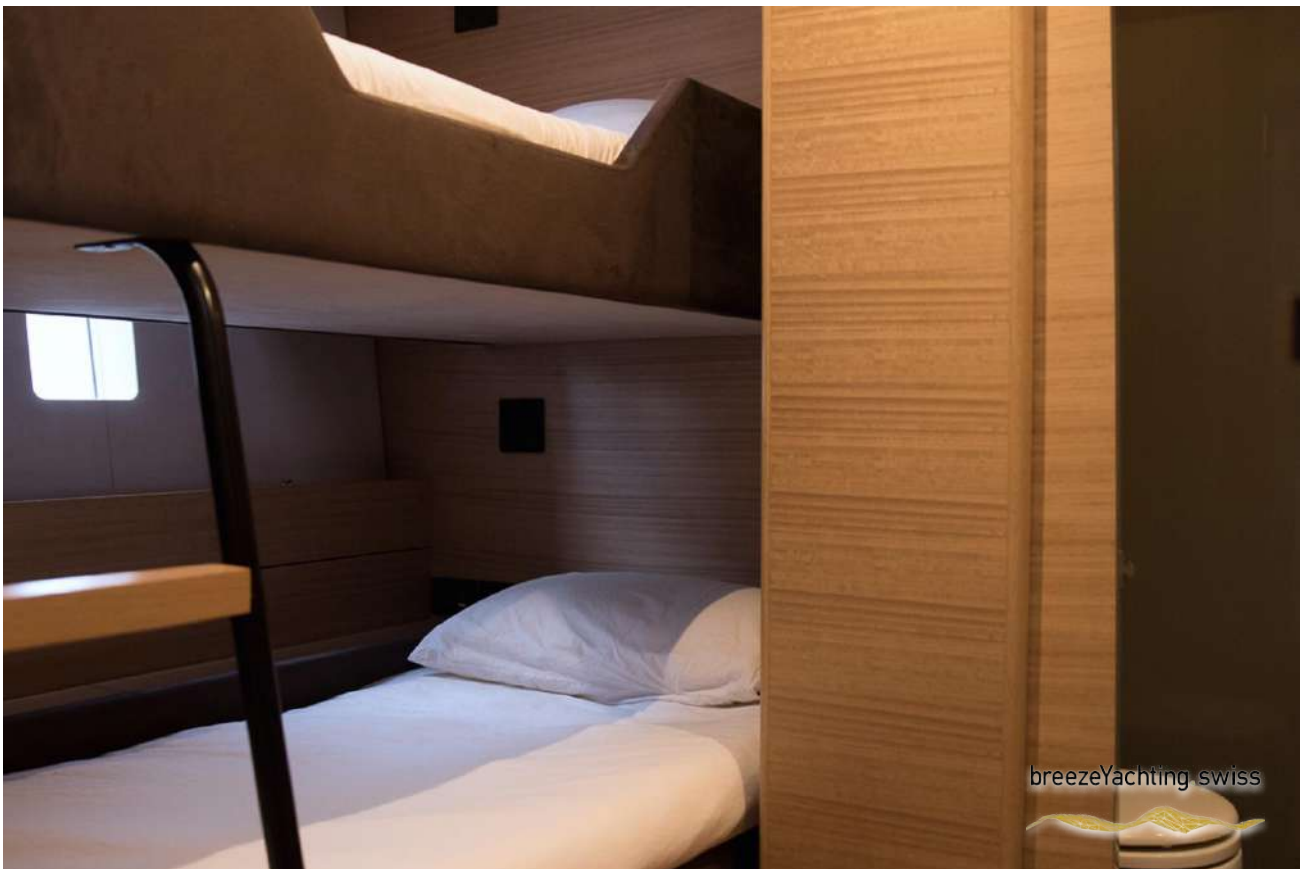
breezeYachting.swiss









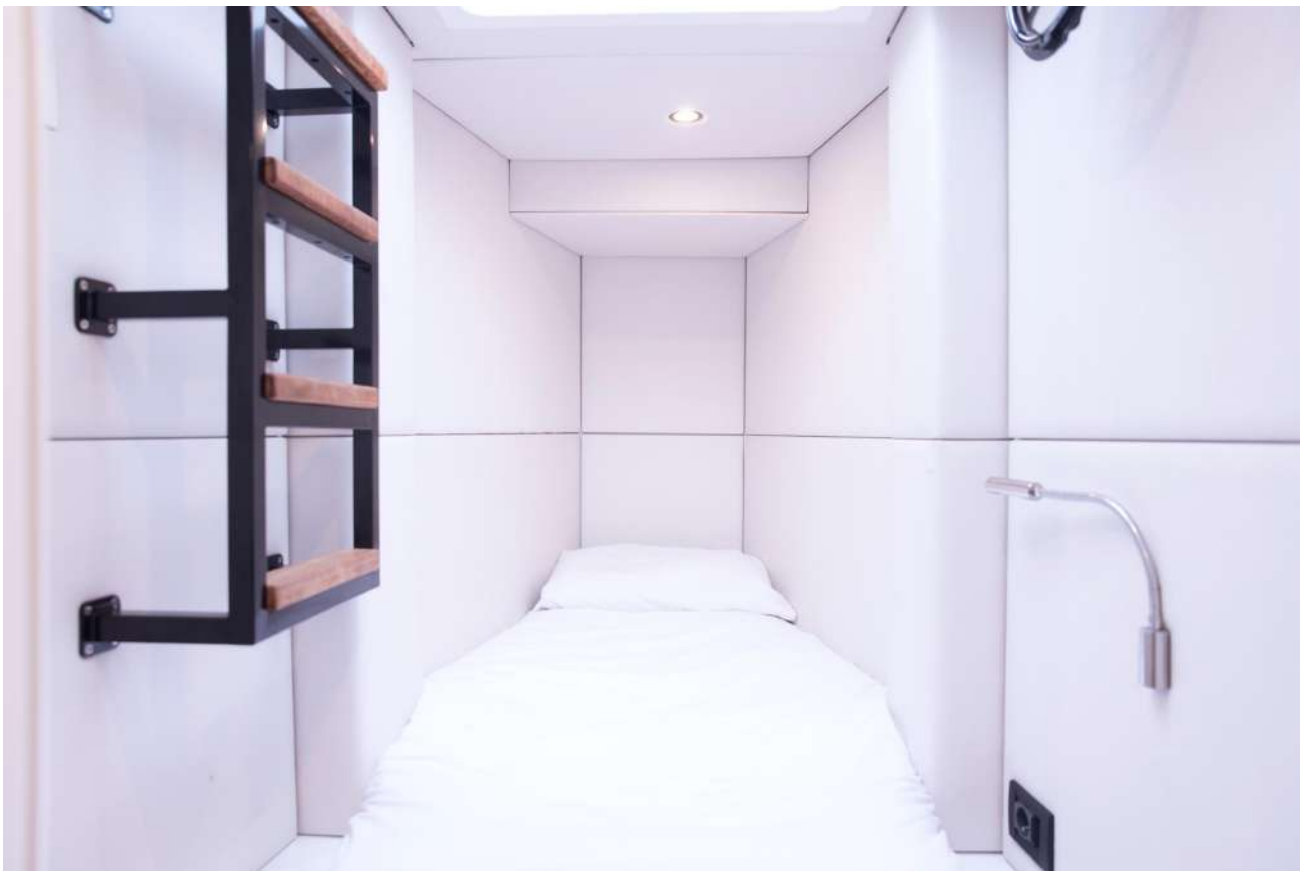




breezeYachting. swiss







breezeYachting swiss



# REFIT HISTORY

- New Engines and Gearboxes: Two new John Deere engines and gearboxes installed for reliable power and efficiency.
- Mast and Rigging Service: Full mast servicing, new rigging, and tuning for dependable sailing performance.
- Engine Bilge and Antifouling: New paint applied to the engine bilge and fresh antifouling for hull protection.
- Propeller, Shaft, and Windlass Service: Propellers, shafts, windlass.
- Complete Plumbing Service: Bathroom pipes and valves replaced, drains cleaned for a fully functional system.
- Mani and Head Sails Service: Sails serviced for optimal performance and longevity.
- All New Solar Panel Installation: New solar panels added for energy efficiency and sustainability.
- Teak Deck Maintenance: Teak deck repaired and sanded for a polished, well-maintained look.
- Tender Crane Upgrade: New aluminum bar fabricated for the tender crane, improving functionality.
- Hydraulic Steering Service: Full hydraulic steering system service for responsive control.
- All Thru-Hull Valves Replacement: Thru-hull valves replaced for leak-free performance and safety.
- Exterior Upholstery Upgrade: New foams installed for exterior upholstery, ensuring comfort and durability.
- 2x Alternator Replacement: Two new alternators installed for dependable electrical power.
- Kitchen Carpentry and Painting: Kitchen modified and repainted for a fresh, updated look.



# REFIT HISTORY

- Rudders Service: Rudders serviced for precise handling and control.
- Main Sail Winch Motor Service: Main sail winch motor serviced for consistent operation.
- Bathing Platform Service: Rudders and bathing platform serviced for improved functionality.
- Safety and Fire Equipment Service: Safety and fire equipment inspected and serviced for compliance and reliability.
- New Anodes: Complete replacement of anodes for enhanced corrosion protection.
- 2x Ice Machine Service: Both ice machines serviced for reliable onboard convenience.
- 2x Bow Thruster Service: Bow thruster serviced for accurate docking and maneuverability.
- All Black Water Piping Replacement: Black water piping replaced for improved sanitation.
- All Gray Piping Replacement: New sink piping installed for reliable operation.
- Air Conditioning System Service: Glycol service completed for the air conditioning system, ensuring consistent cooling.
- All Fan Coil Cleaning: Fan coils cleaned for efficient air conditioning performance.
- All Fly Winch Service: Fly winches serviced for smooth and reliable sail handling.
- Tender Engine Service: Tender engine serviced for dependable operation.
- Anchor Refinishing: Anchor blasted and galvanized for durability and clean appearance.
- Electrical Door Service: Electrical work completed on doors for smooth operation.



# PROPULSION

- 2x John Deere 4045AFM85 (225 HP) | 70 Engine Hours Each
  - Stainless Steel Shafts
  - 2 three-bladed folding propellers (Ewol)
  - 2 engine speed controls and 2 extra engine instruments at the navigation table + engine controls
  - Yacht controller for control of engine and bow thruster and windlass plus upgrade of the engine controls from ZF to Marex
  - 2 electric bow thrusters-Side Power
  - 2 electric oil pumps for servicing engines and generators
  - Extended long range fuel tanks of 2x 3000 Liters / 793 Gallons
  - 2 foldable diesel turtle tanks 1000 Liters each
  - 1 electric pump + 1 manual pump for fuel tanks
  - Rope cutters on the propeller shafts
- 

# RIGGING AND SAILS

- Main Sail: 180 Square Meters / 1937.5 Square Feet, Fully battened mainsail made of first choice dacron, cross cut, 2 reefs made by Incidence Sails
- Genoa: 114 Square Meters / 1227 Square Feet, double pleated made by Incidence sails with complete gear and an electrical furler (Profurl)
- Staysail: 80 Square Meters / 861 Square Feet, double pleated, made of first choice dacron, made by Incidence sails with complete gear and an electrical furler (Profurl)
- Storm Jib: 20 Square Meters / 215 Square Feet, made by Incidence sails
- Gennaker: 260 Square Meters / 2798 Square Feet, made by Incidence Sails, including complete gear and an electric furling (Profurl)
- Carbon mast Performance
- Carbon boom Park Avenue
- Lazy jack and lazy bag
- Mast steps up to boom height



# STEERING SYSTEM

- Rudders constructed of a moulded sandwich lamination (fiberglass/vinyl ester)
  - Self-aligning lower and top bearings
  - Hydraulic steering system
  - 2 emergency tillers
  - Electronic alignment system
- 

# NAVIGATION & COMMUNICATION

- 135mm Compass
- Raymarine AIS700 Class B
- Raymarine gS-series (2021):
  - 1×15,4" Raymarine Multifunction Display (2021)
  - 1×12,1" Raymarine Multifunction Display (2021)
  - 2 x Raymarine RMK-9 remote keyboard (2021)
- Radar 4kW 24" Raymarine RD424HD
- Raymarine Evolution Autopilot
- 2 x pilot control Raymarine p70
- GPS RayStar 130
- 4 universal displays Raymarine i70 for speed, depth and wind display
- Ray260 VHF with DSC function (dual station)
- Mast mounted camera



# AUDIO VISUAL EQUIPMENT

- Widescreen 55" LED TV in the saloon, Including a system that completely hides the TV in the ceiling when not in use at the touch of a button
  - Widescreen 32" TVs in each cabin
  - Heos by Denon Surround 4.1 (Yamaha Subwoofer + Heos driver with ceiling speakers)
  - 4 waterproof speakers in the cockpit
  - Multimedia / Wifi System:
  - Hubba X4 Duo (Wifi / GSM Router)
  - Asus Router
  - WD Personal Cloud for Offline Media Viewing
  - Apple TV 4K & Chromecast
  - Satellite Phone: KVH Maritime Tracphone V7-HTS Satellite Communication System
  - Satellite Internet: Starlink
- 

# GALLEY & LAUNDRY EQUIPMENT

- Refrigerator with integrated freezer
- Dishwasher
- Gas stove (2022)
- Electric oven (2022)
- Microwave (2022)
- 800L of Fridge and Freezer space in the galley
- Thermomix Kitchen Machine
- Washing machine & dryer (2022)
- Stainless steel BBQ on the flybridge
- Wine cooler for 32 bottles (Liebherr Vinidor)
- Double-drawer fridge Vitrifrigo in saloon
- Fridge in the cockpit
- Fridge on the flybridge
- 2x Ice Maker



# ELECTRICAL SYSTEMS

- AC – 230V 50Hz 1PH: main switchboard with panel extension (semi-automatic change over shore/generators)
  - 1x Victron Cerbo Energy Monitoring & Control (2021)
  - 4x Victron chargers Skylla i (24V/100A) (2021)
  - 1x Victron chargers (24V/80A)
  - 2x Victron Inverters (230V/50Hz/5000W)
  - 1x Victron Inverter ( 230V/50Hz/3000W)
  - 8x Victron 24V LFP batteries 1600AH (2021)
  - 2x 24V AGM Batteries (2021)
  - 2x shore power inlets (63A)
  - 2x Cummins Onan Diesel Generator 2x 27kVA | 2300 Hours Each
  - 2x Mastervolt 110A Alternator (2021)
  - 12 solar panels 156Wp on hardtop bimini
- 

# PLUMBING AND SANITATION

- 2x 800 Liters / 211 Gallons fresh water tanks equipped with level indicators and pump
- 2x 100 Liters / 26.4 Gallons hot water boilers
- 1x 700 Liters black water tanks with 3 way valves
- 1x 700 Liters grey water tanks with electric pumps
- Fresh water inlet, shore connection
- Bilge pumps:
  - 4 electrical bilge pumps
  - 2 manual bilge pumps
- Fresh water hose outlets: 1 x cockpit and 1 x bow
- Rain Shower on the cockpit ceiling with mixing valve
- 6 High end Tecma electric toilets with fresh water flush
- Watermaker Sea Recovery Aquamatic 1400
- Watermaker Schenker Zen 100 (2021)



# DECK & HULL EQUIPMENT

- Bow pulpits with integrated teak seats
- Lewmar portlights
- 1 swim ladder on the skirts with large easy to grab handles
- Blocks and jammers-Harken, Antal and Spinlock
- Electric lifting system for the dinghy with extendable arms and remote controller for up to 1000 kg including stainless steel dinghy chokes
- A Hydraulic platform capable of lifting up to 500 kg
- A Hatch at the top of the stairway between cockpit and flybridge
- 2 fresh water outlets at the bottom of the mast and in the cockpit
- 5 deck chairs (Valdenassi Calypso) together with a height adjustable cockpit table
- L-Shaped sofa in the cockpit
- Composite hard top bimini with SS leg and structure on the flybridge with integrated lights and solar panels
- Bow pulpits with integrated teak seats
- Bimini windshield
- Carbon steering wheel 1200 mm 3-stroke
- Hydraulic gangway – Opacmare – model (3000mm length, width 60mm)
- 4 aft and bow capstans for mooring — 1500 W Quick
- Rain Shower on the cockpit ceiling with mixing valve
- Cover kit (Steering wheel, Nav station, Flybridge table) – Sunbrella
- Curtains to cover flybridge
- Curtains to fully close cockpit
- Rudders constructed of a moulded glass/vinyl ester and the rudder stocks are made out of high end aluminium
- The extended longitudinal beam is reinforced
- A Catwalk is fitted on the forward beam
- The raisable aft platform makes swimming and watersports possible with ease at the press of a button



# AIR CONDITIONING

- Fully electric Skyscreen blinds around the entire yacht for all side facing windows
  - Manual Skyscreen blinds for those on the cabin ceilings
  - Air Conditioning of 104'000 BTU from Frigomar:
    - 1x 62'000 BTU Unit
    - 1x 42'000 BTU Unit
- 

# MOORING & TOOLS

- Mooring kit (10 fenders + 4 mooring ropes)
  - Anchors:
    - Main Anchor – Ultramarine 100kg
    - Secondary Anchor: FOB Rock 60kg
  - 2x Windlass Quick Marine DK6 3500 W with drum + 120 m galvanized chain (diameter 16mm)
  - Digital Chain Counter
  - 2x Boat hook
- 

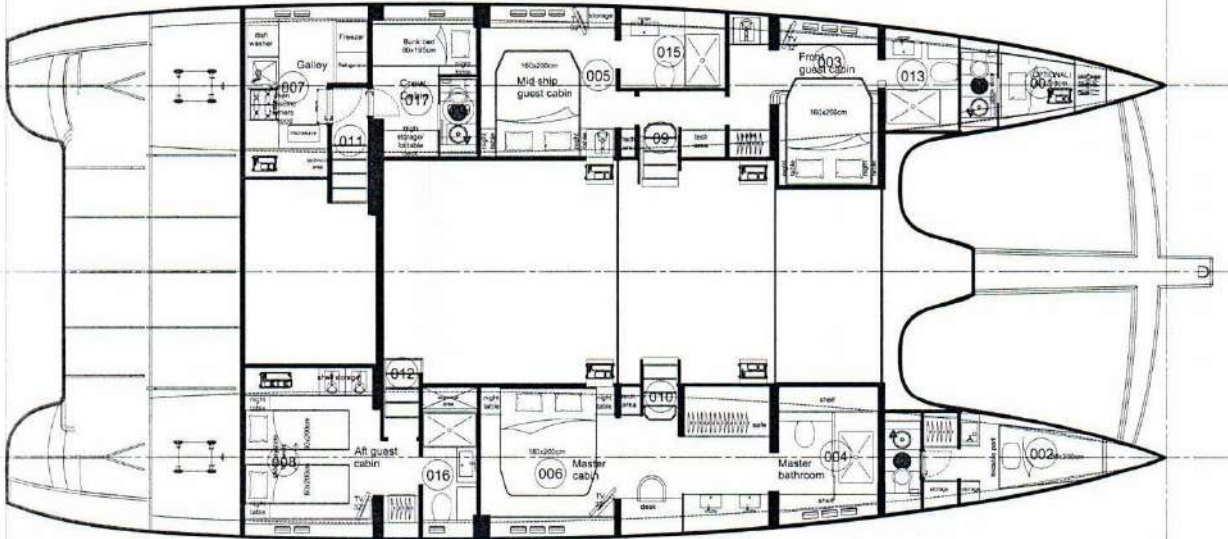
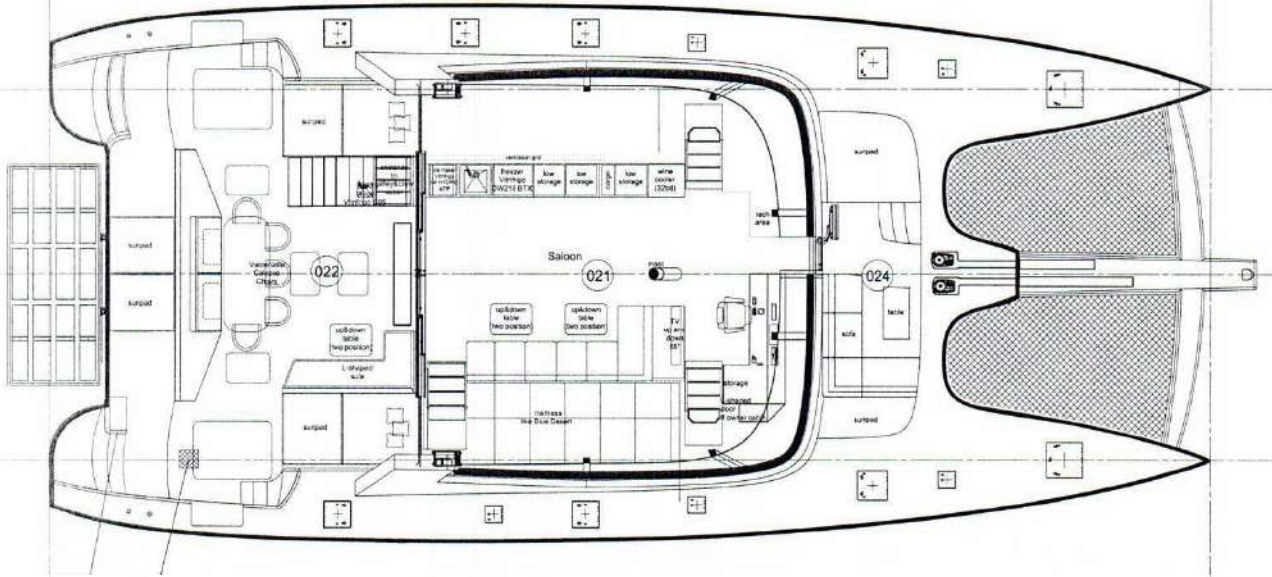
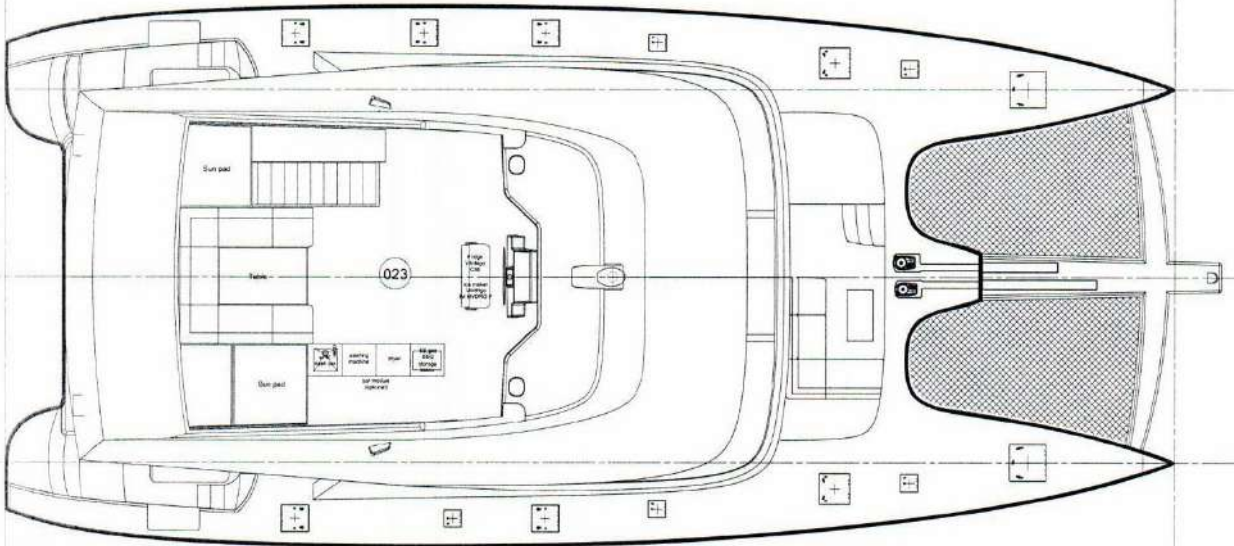


# TENDERS & TOYS

- Tender Diverib 550 with hypalon tubing:
  - Suzuki 115 HP fourstroke outboard DF115A
  - Suzuki Keyless Start System
  - Lowrance Elite 7Ti chartplotter
  - Raymarine VHF Ray60
  - New upholstery 2022
  - Sound System: 4 speakers & radio
  - Ultra Marine 5kg anchor
  - Towing post for wakeboards / waterskiing
  - Navigation lights
  - Courtesy lights
- Seabob FS5 including Camera
- Fliteboard electric foil board (E-Foil)
- 2x SUP
- 1x Complete Wing Foil Setup
- Kitesurfing Equipment: 2 boards & kites: 7,9,12 Cabrinha
- Foldable kayak
- Nomad Floating Electric Dive Compressor
- 2x Wakeboard
- 1x Wakesurf
- Tube for Tubing
- Snorkeling Equipment 7x set of fins with mask and snorkel
- Yoga Mats, Weights, Gym Equipment, etc.
- 3x E-Scooter



# LAYOUTS






[For more information, CLICK HERE](#)





**CORNELIUS KISTLER**

Founder & CEO

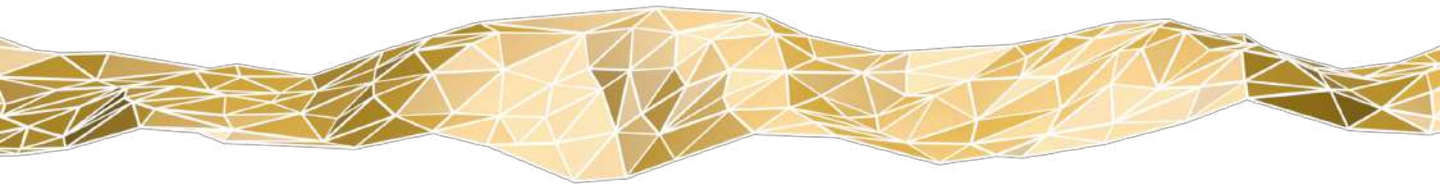
 WHATSAPP ME

m. +41 79 702 7000

[ck@breezeyachting.swiss](mailto:ck@breezeyachting.swiss)

# breezeYachting.swiss

WE SPEAK YACHTING. LET'S TALK.



Switzerland ● Malta ● Spain ● Monaco ● St. Tropez

[www.breezeyachting.swiss](http://www.breezeyachting.swiss)

#### DISCLAIMER

The company offers the details of this vessel in good faith but cannot guarantee or warrant the accuracy of this information nor warrant the condition of the vessel. A buyer should instruct his agents, or his surveyors, to investigate such details as the buyer desires validated.

This vessel is offered subject to prior sale, price change or withdrawal without notice.