

breezeYachting.swiss



# Sunseeker 95 Yacht 'EVERDEEN'

EUR 6'250'000 VAT paid | 28.06m | 2018

# KEY POINTS

- MAN engines as opposed to MTUs
- 5 cabins below 24 metre load line length
- Digital Zero speed fin stabilizers (hydraulic)
- New Miele galley appliances
- Starboard main deck balcony



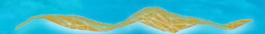
With the 95 Yacht, Sunseeker have managed to design a yacht with the look and feel of a hundred-plus footer but keeping her under the 24 metre load-line which means she is easier to manage and does not cost as much to run.

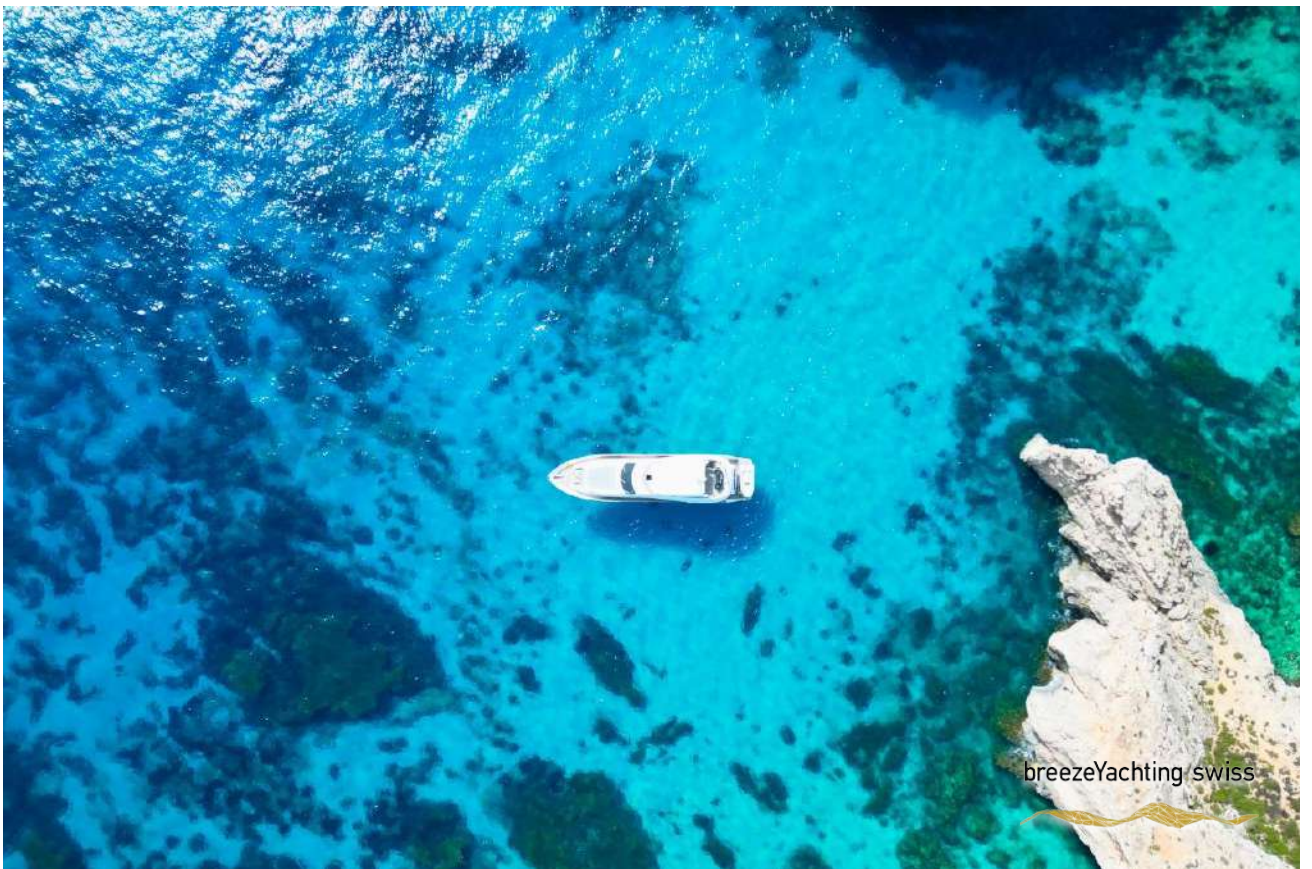
The bathing platform is hydraulic and has a load capacity of 650 kg so it can comfortably accommodate the Williams 445 jet rib. The cockpit has this large U-shaped seating area that surrounds the table complete with stylish glass Sunseeker inlay. Just by the stairs to the flybridge you have a third station controller making docking stern-to a little easier for the Captain.

The yacht has been really well-loved by the owner and the excellent crew on board who have been here from day one. If you are looking for a five-cabin boat below 30 metres but with all the creature comforts you would expect on a 30 plus meter yacht then we highly recommend you get in touch with us so we can provide you with any more information you might require.



breezeYachting swiss







breezeYachting swiss









breezeYachting swiss







# SPECIFICATIONS

<b>Builder:</b>	Sunseeker
<b>Model:</b>	95 Yacht
<b>Model Year:</b>	2018
<b>Flag:</b>	Malta
<b>Hull/Superstructure:</b>	GRP
<b>Class:</b>	RINA C + Hull, Y Special Navigation classification
<b>Exterior Design:</b>	Don Shead
<b>Length overall:</b>	28.06 m
<b>Beam:</b>	6.55 m
<b>Draft:</b>	2.13 m
<b>Displacement:</b>	91.1 T
<b>Tonnage:</b>	101 GT
<b>Cabins:</b>	5
<b>Guests:</b>	10
<b>Crew:</b>	4
<b>Crew Cabins:</b>	2
<b>Engines:</b>	Twin MAN 12V
<b>Engine hours:</b>	1730 h (11.4.2026)
<b>Engine power:</b>	2 x 1900 HP
<b>Fuel Type:</b>	Diesel
<b>Generators:</b>	3 x Kohler 20.5kW 1 phase 50HZ
<b>Generator hours:</b>	3500 h (11.4.2026)
<b>Cruising Speed:</b>	18 kn
<b>Maximum Speed:</b>	27 kn
<b>Range:</b>	1400 nm
<b>Consumption:</b>	500 l/h
<b>Sabilizers:</b>	Digital Zero speed fin stabilizers (hydraulic)
<b>Fuel Tank:</b>	12000 l
<b>Water Tank:</b>	1750 l
<b>Black Water:</b>	571 l
<b>Gray Water:</b>	1000 l





breezeYachting swiss



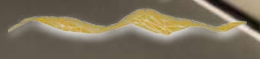


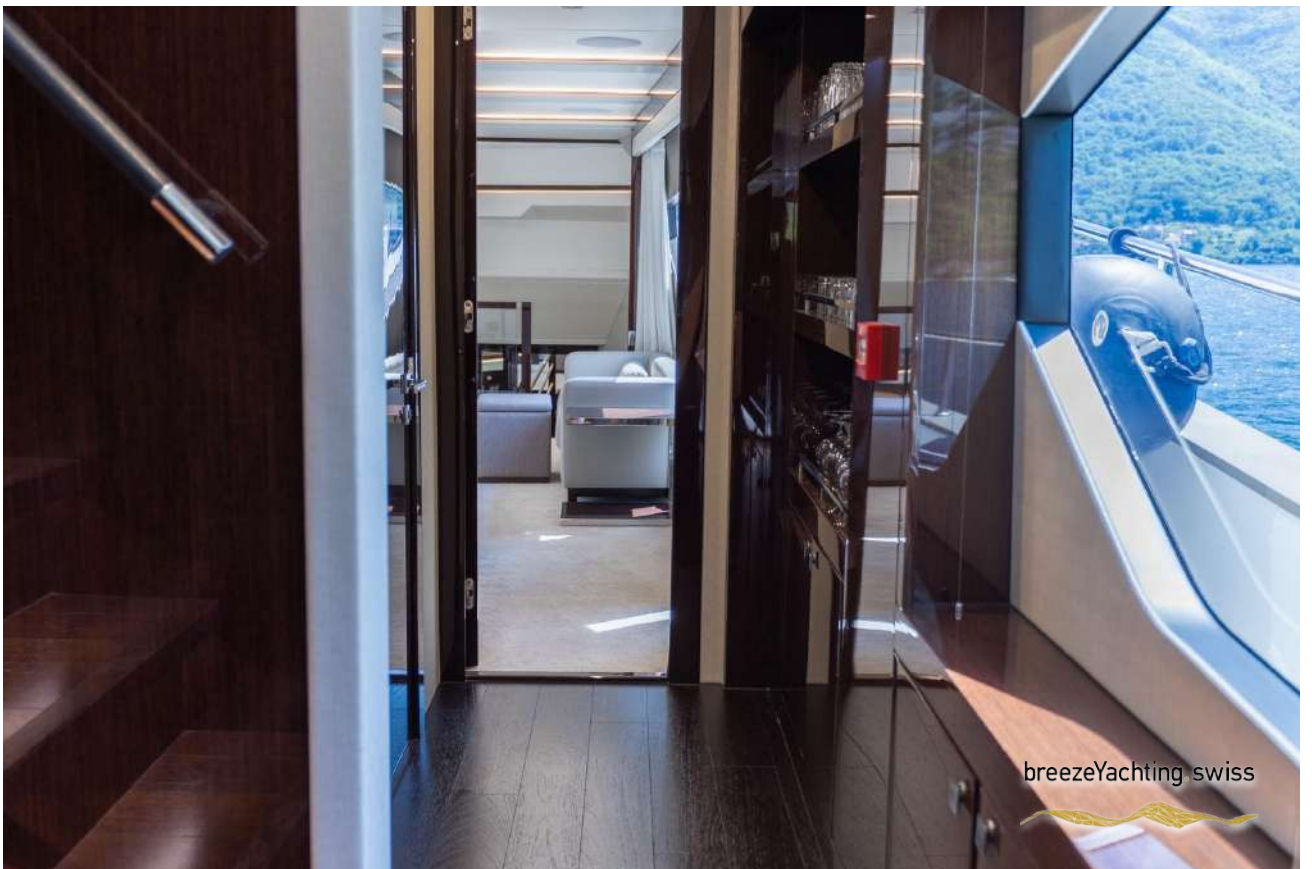






breezeYachting swiss

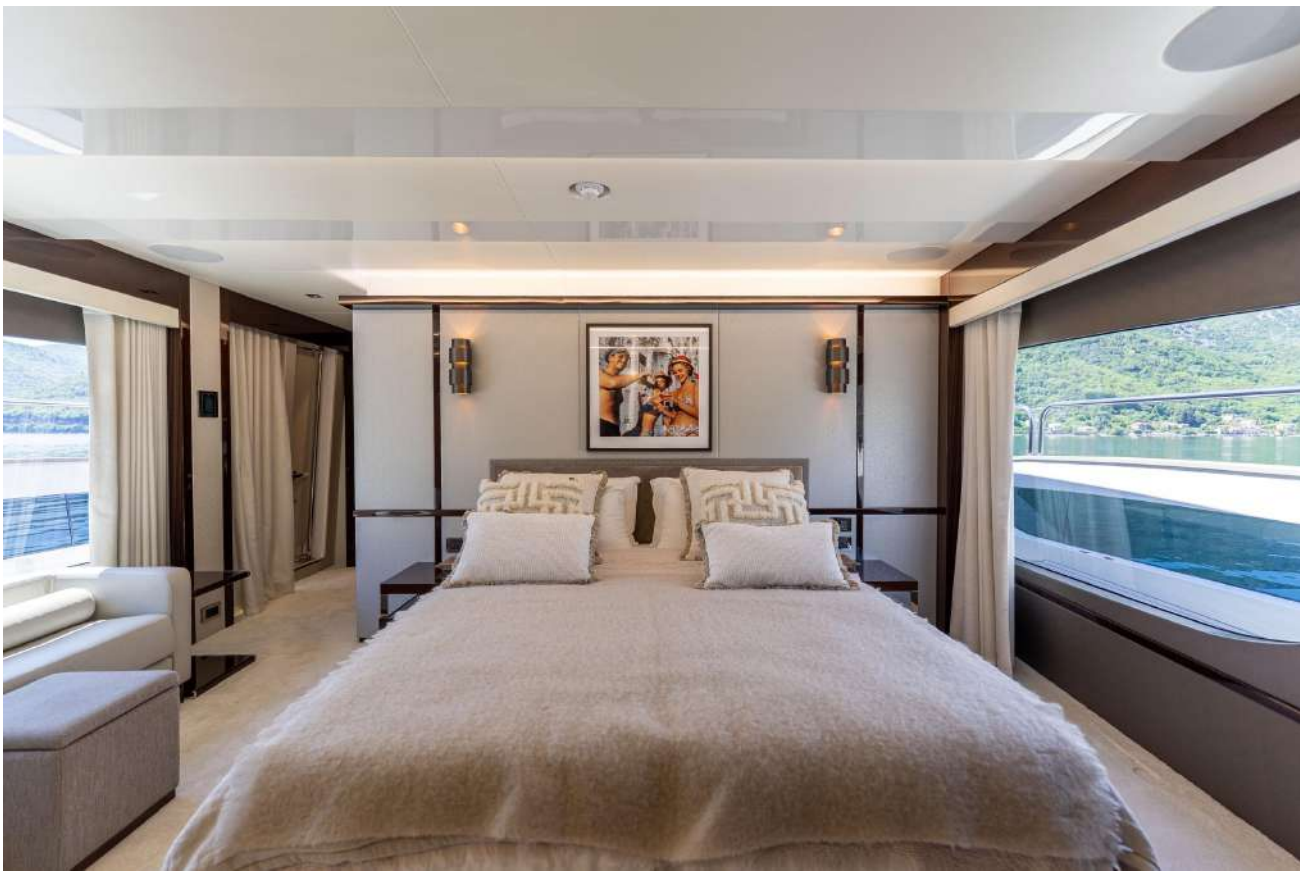






breezeYachting swiss





breezeYachting.swiss





breezeYachting.swiss















breezeYachting.swiss





# OPTIONS

- Flybridge hardtop including retractable centre canopy and aft extending sun canopy.
  - Air Conditioning Marine Air chilled water system to Tropical specification and with quieter running WhisperCool DC fans.
  - Sleipner digital Fin stabilization system.
  - Twin Lewmar V8 24 Volt DC Windlass system.
  - Trailing Pumps.
  - Fuel polishing system.
  - Standby fresh water pump.
  - Water Softener required for the domestic fresh water system.
  - Portable electric transfer pump Oil change system for engines gearboxes and generators.
  - Underwater lights. Lumishore white LED. 8 lights with 4 across transom and 2 on either side.
  - CCTV with 3 Cameras: 2 x Infrared located in the engine room plus 1 x camera located on the Flybridge overhang facing aft.
  - Pair of Retractable Cleats for tender on port and stbd corners of platform.
  - Removable stainless steel bathing ladder with teak treads.
  - Covers Package- Aft Cockpit seating cover & table cover. Fore Deck seating cover, sunpad cover & table cover. Flybridge seating cover, bar stools, sunpad cover, table cover & helm seat covers.
  - Twin Custom Stainless steel Refrigeration and freezer units.
  - Miele Wine Cooler for 34 bottles.
  - New Miele galley appliances
  - Separate Miele washing machine and Miele tumble dryer
  - Electric BBQ grill
  - Sprung mattress for all cabin beds
  - Interior Wood Finish – Wenge Gloss Finish
- 



# ADDITIONAL OPTIONS

- 3 x Kohler generators 20.5 kW 1 phase 50Hz
- Hydraulic Slepner bow and stern thruster
- Door locks x 5
- Medium tinted filmInboard berth to move outboard both
- Hydraulic crane
- Watermaker Idromar (250 litres per hour)
- Side mounted stairway LED Nav lights
- Network and Comms upgrade
- 5 ring induction hob
- 3rd Station Control
- 2 extra cleats on Bulwarks
- Spare Black water pump
- Cardorin teak flooring
- Electric blinds in saloon
- Electric blinds in cabins
- Electric blinds in lobby
- External Power sockets
- Sockets in anchor locker
- Wiring for name on transom
- Black out blinds sewn into curtains
- 4TB Hardrive storage system
- Conduit for Flir camera
- Larger inflatable fenders
- Additional drain for galley sink
- Wheelhouse table
- Micron 350
- Prop SpeedWindless foot switches
- 2 extra cushions in crew cabin
- 2 extra place settings to cater for 12
- Side boarding ladder
- Bulwark top Capping rail in Smoke grey esthec
- Fresh water deck wash system
- Victron Quattro Inverter
- Preparation for Spa Tub installation on flybridge
- 2 x Icemakers Victrifrigo
- Hidden sockets under aft cockpit and flybridge table
- Twin anchor arrangement 140 metres and 100 metres of chain respectively
- Additional mooring cleats midships
- FLIR night vision camera (remove preparation for installation of FLIR camera)
- Upgraded silent generator exhaust system
- Besenzoni Hydraulic Telescopic passarelle
- Twin Berth cabins can be converted to doubles
- Wifi router



# NAVIGATION UPGRADES

## Navigation Upgrade – Flybridge Console:

- Three Simrad MO16-T 16" multi touch monitors. With Simrad NSO processor and OP50 keypad controller. One display used for Sunseeker monitoring.
- Simrad IS42 Multifunction Instrument.
- Simrad Autopilot system with QS80 control.
- Simrad second station RS90 VHF with DSC.
- Richie Helmsman HF-743W Flush Mount Magnetic Compass.

## Navigation Upgrade – Main Console:

- Three Simrad MO19-T 19" multi touch monitors. With Simrad NSO processor and OP50 keypad controller. One display used for Sunseeker monitoring.
- Simrad Halo 24 Radar
- Simrad GS25 GPS Antenna.
- Simrad IS42 Multifunction Instruments x 3 – displaying navigation and pilot information.
- Simrad Autopilot system with QS80 control.
- Simrad depth transducer with water temp. Sonar Hub black box sounder module.
- Simrad structure scan HD side scan transducer x 2
- Simrad RS90 VHF with DSC. 2.4M whip VHF antenna. (Third station in crew cabin)
- Simrad GoFree wireless – allowing repeat and control of Nav system via iPad.
- Simrad Automatic Identification System NAIS-400 Class B AIS Transponder system with dedicated VHF and GPS receiver.
- Simrad 110WX Ultrasonic Wind Sensor.
- Richie Helmsman HF-743B Flush Mount Magnetic Compass.

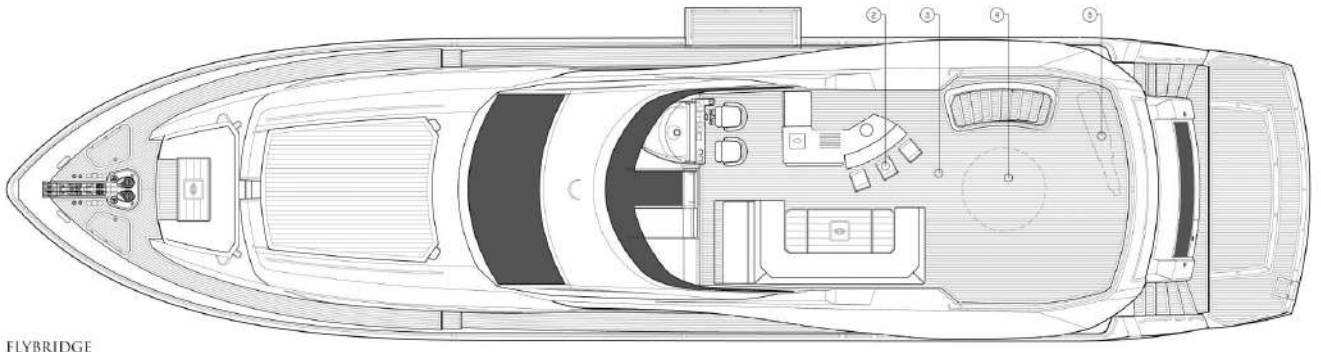


# PERFORMANCE AV PACKAGE

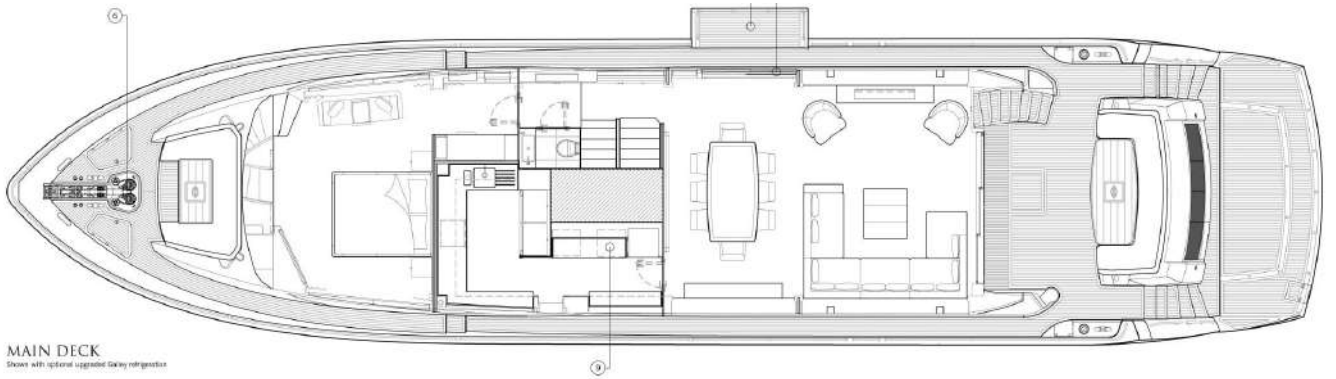
- Saloon – Samsung 55" 4K UHD Smart TV on rise and fall mechanism with Harmon Kardon BDS580 5.1 3D Blu-ray Cinema surround system using Bowers & Wilkins 8" in ceiling speakers and Subwoofer. Sonos Connect wireless audio streaming with Apple TV and an Auxiliary HDMI socket, all linked to AV system with a tablet to control the system.
- Master Stateroom – Samsung 55" 4K UHD Smart TV with HarmonKardon BDS580 5.1 3D Blu-ray Cinema surround system using Bowers & Wilkins 8" in ceiling speakers and Subwoofer. Sonos Connect wireless audio streaming with Apple TV and an Auxiliary HDMI socket, all linked to AV system. With a tablet to control the system.
- Port & Starboard Cabins (Mid & Aft) – Samsung 32" HD LED TVs with Harmon Kardon BDS280 2.1 3D Blu-ray Cinema system using Bowers & Wilkins 6" in ceiling speakers and Subwoofer. Sonos Connect wireless audio streaming with Apple TV and an Auxiliary HDMI socket, all linked to AV system.
- Crew Mess – Samsung 22" HD LED TV with Fusion DVD/CD/FM Tuner, Bluetooth function, stereo speakers and Sonos Connect.
- For each of the two Crew Cabins, Galley and the Pilot House, Fusion DVD/CD/FM Tuner, Bluetooth function, stereo speakers.
- Aft Cockpit zone performance audio upgrade with Four Sonance Extreme Speakers with Sonos Connect and amplifier.
- Flybridge zone performance audio upgrade with Eight Sonance Extreme Speakers with Sonos Connect and amplifier.
- Fore Deck zone performance audio upgrade with Two Sonance Extreme Speakers with Sonos Connect and amplifier.
- The exterior zoning audio to be linked to the Saloon AV system via Sonos Connect
- Second Hot water calorifier for boats with 5 cabins
- 200 litre stainless steel cased tank with 2 x 2kW immersion heaters.
- Starboard Main Deck Saloon bulwark balcony with glazed sliding door
- Flybridge wet bar with a tablet to control the zones.



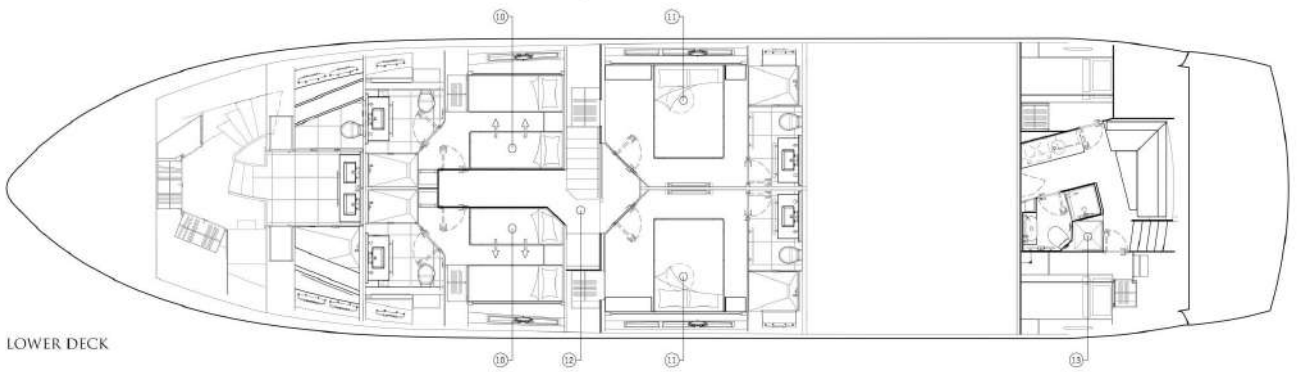
# LAYOUTS



FLYBRIDGE

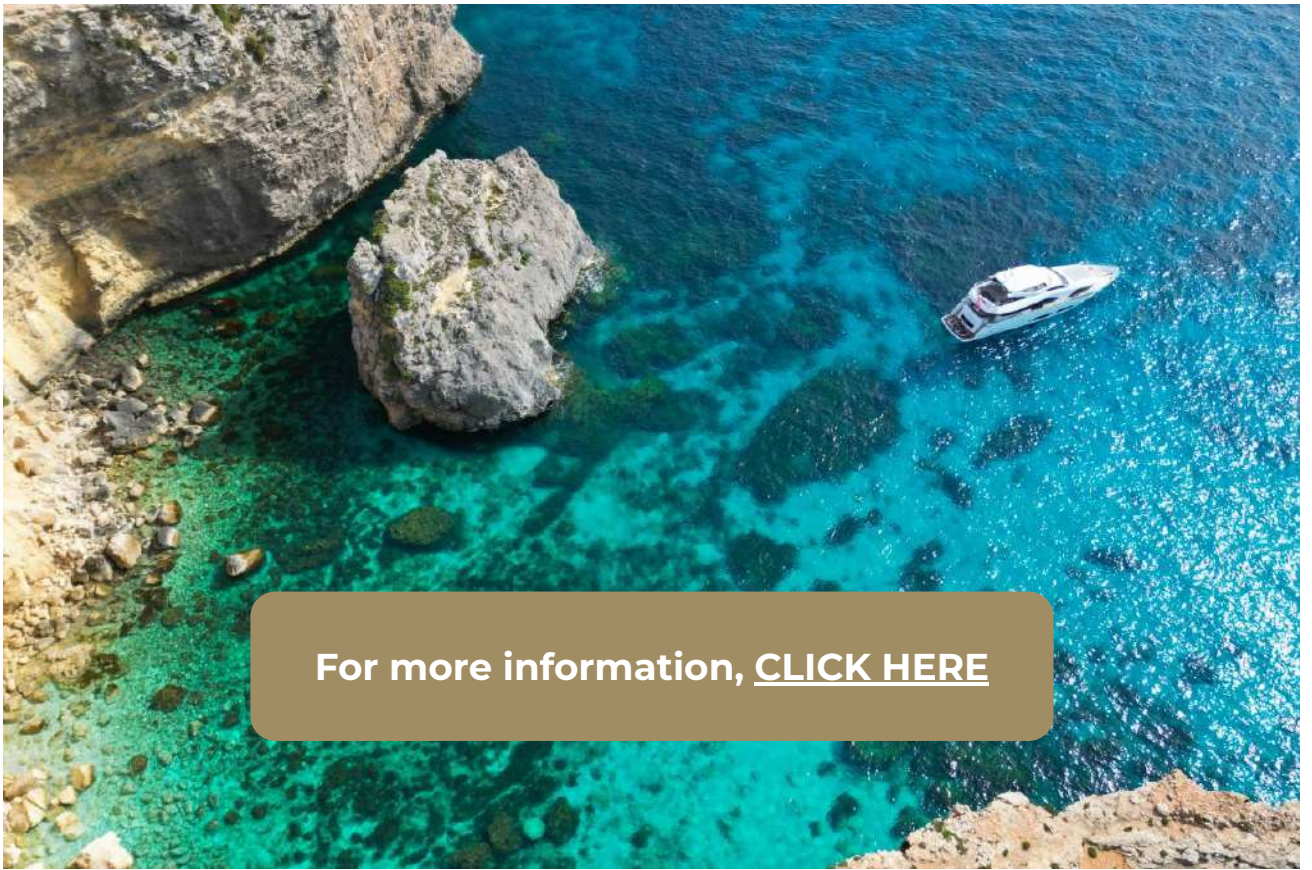


MAIN DECK  
Showed with optional upgraded Oakley refrigeration



LOWER DECK





For more information, [CLICK HERE](#)





**CASSIDY WOODS**

Yacht Advisor

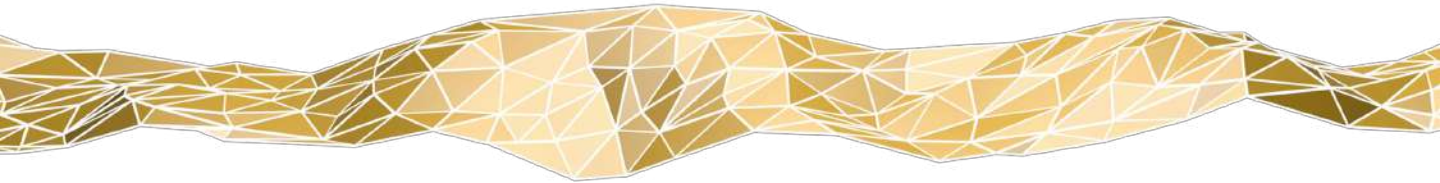
 WHATSAPP ME

m. +35 69 933 8880

[cass@breezeyachting.swiss](mailto:cass@breezeyachting.swiss)

# breezeYachting.swiss

WE SPEAK YACHTING. LET'S TALK.



Switzerland ● Malta ● Spain ● Monaco

[www.breezeyachting.swiss](http://www.breezeyachting.swiss)

DISCLAIMER

The company offers the details of this vessel in good faith but cannot guarantee or warrant the accuracy of this information nor warrant the condition of the vessel. A buyer should instruct his agents, or his surveyors, to investigate such details as the buyer desires validated.

This vessel is offered subject to prior sale, price change or withdrawal without notice.